



# CDC's Role in the Safe Movement of Biologics and Vectors: At the Port of Entry

**Sara Taetzsch, DVM, MPH, DACVPM**

**Veterinary Medical Officer**

**Zoonoses Team**

**Quarantine Border Health Services Branch**

**Division of Global Migration and Quarantine**

**[cdcanimalimports@cdc.gov](mailto:cdcanimalimports@cdc.gov)**

Federal Partners Import Permit Regulations Webcast

December 3, 2020

# Outline

- What happens at the port of entry
- CDC's interaction and collaboration with other governmental authorities
- CDC-regulated animal species with import permit requirements
- Common entry issues
- Examples of what not to do
- Tips for importing biologics and vectors safely



Photo credit: CDC quarantine stations

# **What Happens at the Port of Entry**

# CDC Mission

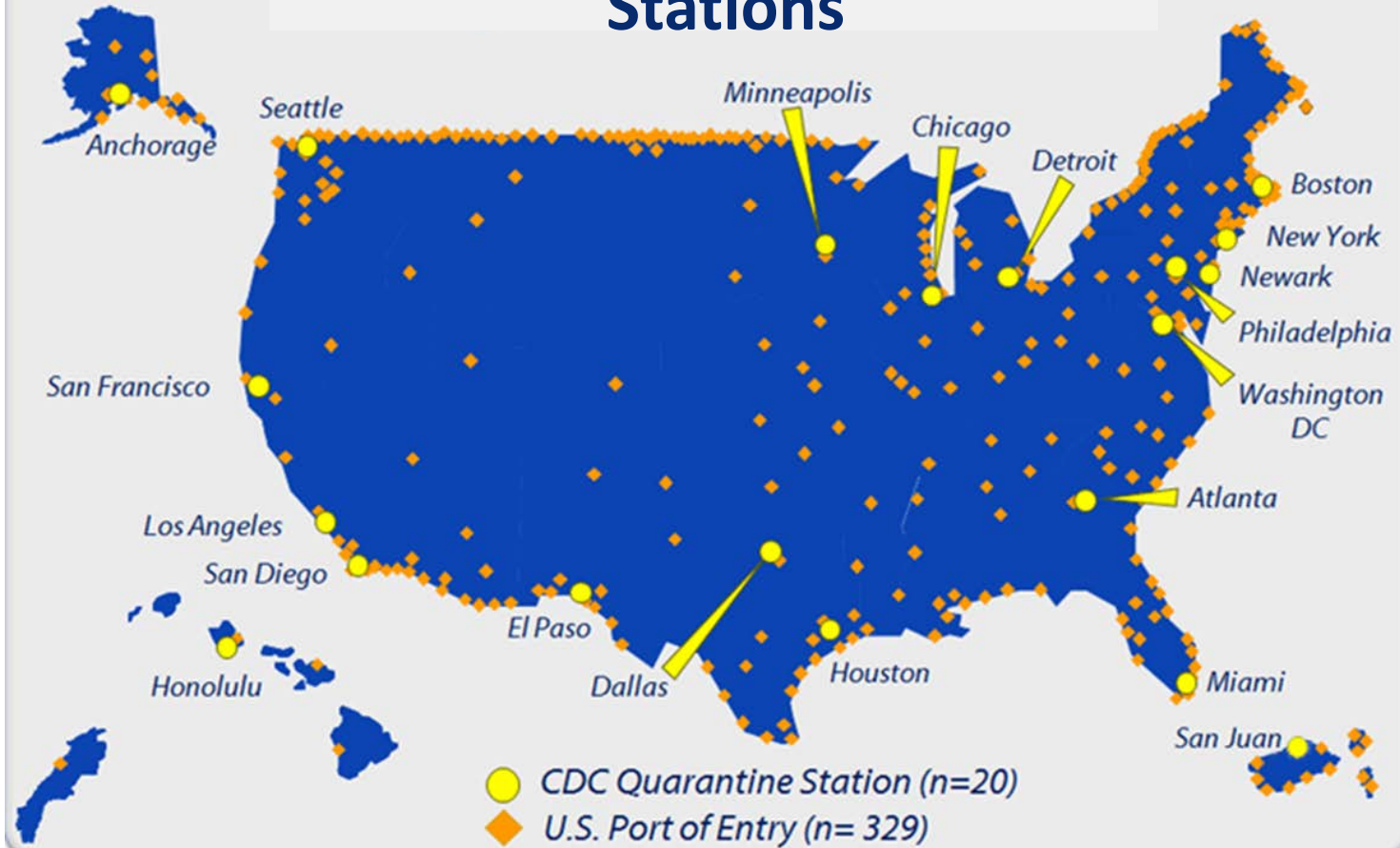


The mission of the Quarantine and Border Health Services Branch (QBHSB) is to **protect the public's health at US borders and beyond.**

**QBHSB accomplishes this mission by:**

- **Preparing** for response to communicable diseases
- **Enhancing** federal, state/territorial, international, and industry partnerships
- **Enforcing** public health regulations
- **Responding** to travel-related communicable diseases
- **Supporting** public health at international borders

# U.S. POE and CDC Quarantine Stations



# At the Port of Entry:

- Land border, airport, or seaport
- Customs and Border Protection officers review documents and inspect the import
- Customs Officers contact CDC Quarantine Station staff to determine whether the import meets CDC requirements

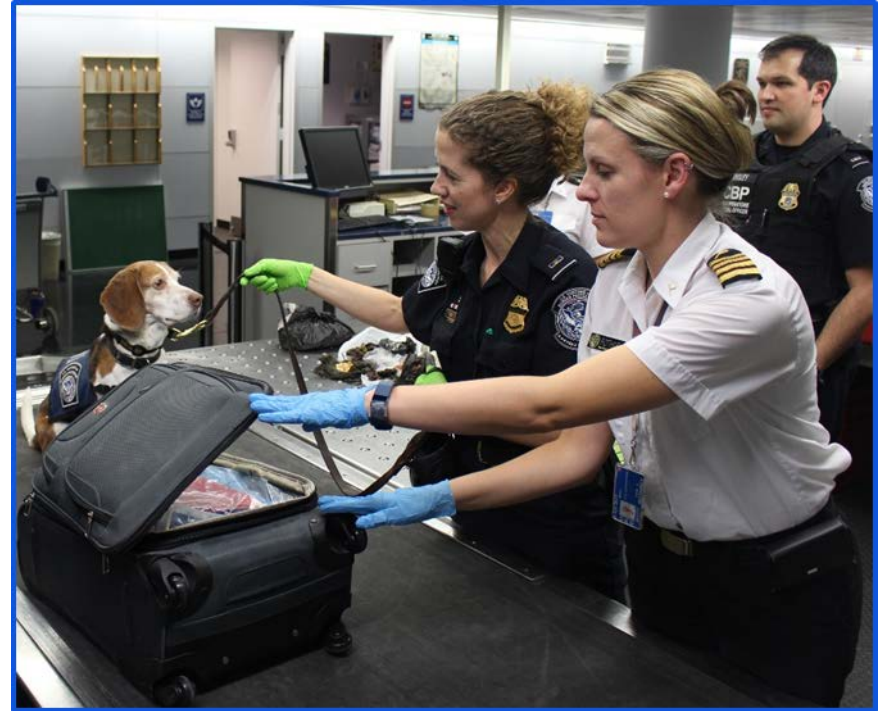


Photo credits: CDC quarantine stations

# Biological Materials

- Specimens of **human** and **animal** tissues
  - Blood
  - Organs
  - Fluids
  - Bones
  - Skin
  - Muscle
  - Connective tissue
  - Etc.

# Vectors

- Known to transfer or are capable of transferring infectious agent to humans
  - Animals
  - Arthropods
  - Animal products
  - Molecular vectors



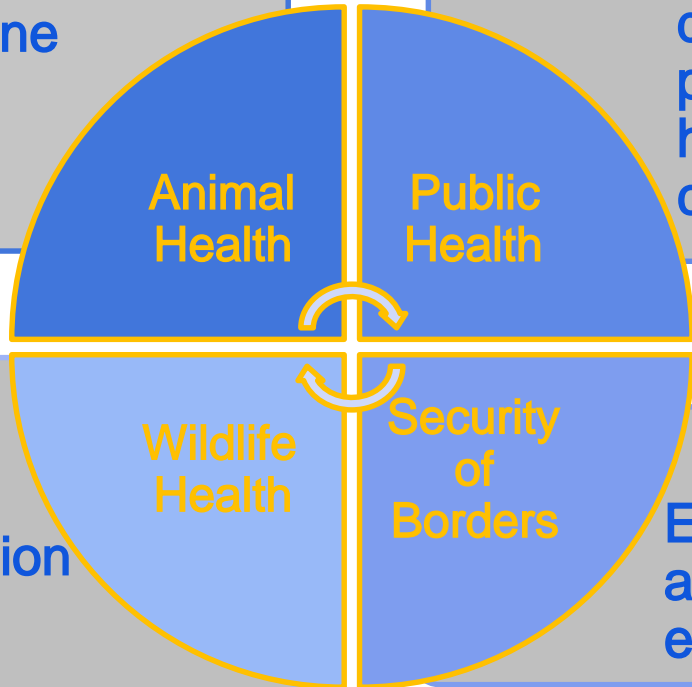
# Federal Governmental Regulatory Agencies At Ports of Entry



United States  
Department of  
Agriculture Animal  
and Plant Health  
Inspection Service



- Livestock and equine health
- Animal welfare



- Zoonotic diseases of public health concern



- CITES \*
- Conservation
- Exotics

Enforcement  
at ports of  
entry



\*Convention on International Trade in Endangered Species of Wild Fauna and Flora

# **CDC-Regulated Animal Species with Import Permit Requirements**

# CDC-Regulated Animals and Animal Products



Photo credits: iStockPhoto, CC BY-SA (Civet), CDC quarantine stations (Gambian pouched rat)

# CDC-Regulated Animals – Dogs and Cats

42 CFR §71.51



Photo credits: iStockPhoto

- Focus is on canine rabies virus variant (dog rabies)
- **Permit\*** required for dogs from high-risk restricted countries (currently Egypt)
- Rabies vaccination certificate needed for dogs from countries that have high-risk of dog rabies
- Dogs and cats must appear healthy on arrival

[www.CDC.gov/dogtravel](http://www.CDC.gov/dogtravel)

\* **Contact: [cdcanimalimports@cdc.gov](mailto:cdcanimalimports@cdc.gov)**

# CDC-Regulated Animals – Viverridae

42 CFR §71.32(b)



- Civets - Severe acute respiratory syndrome (SARS) outbreak in 2003
- Applies to all members of the family Viverridae
- Live Viverridae – permit required
- Viverridae products – rendered non-infectious

Permission letter issued for science, education, or exhibition

Contact: [cdcanimalimports@cdc.gov](mailto:cdcanimalimports@cdc.gov)

# CDC-Regulated Animals – Turtles

42 CFR §71.52



- *Salmonella* sp. outbreak in children in 1975
- Applies to turtles with shell smaller than four inches long and viable turtle eggs
- Cannot be imported for commercial purposes
- Six or fewer can be imported if not for commercial purposes

Permission letter issued for science, education or exhibition

Contact: [cdcanimalimports@cdc.gov](mailto:cdcanimalimports@cdc.gov)

Photo credits: CDC quarantine stations

# CDC-Regulated Animals – African Rodents

42 CFR §71.56



- Restrictions followed a 2003 monkeypox outbreak in the United States
- Linked to African rodents imported for the pet trade
- A total of 71 human cases were investigated
- First human monkeypox cases reported outside of Africa

Permission letter issued for science, education, or exhibition

Contact: [cdcanimalimports@cdc.gov](mailto:cdcanimalimports@cdc.gov)

Photo credits: CDC quarantine stations

# CDC-Regulated Animals – Nonhuman Primates

42 CFR §71.53



Photo credits: iStockPhoto

- Nonhuman primates can be reservoirs or vectors for various serious zoonotic diseases
- May **ONLY** be imported for science, education, or exhibition
- Importers must be **registered\*** and routinely inspected by CDC
- Biological materials require CDC **permit\*\*** or certificate of non-infectiousness

\* [cdcanimalimports@cdc.gov](mailto:cdcanimalimports@cdc.gov)

\*\* <https://eipp.cdc.gov/>



# CDC-Regulated Animals – Bats

42 CFR §71.54



Photo credits: iStockPhoto and CDC quarantine stations

- Bats can be reservoirs or vectors for various serious zoonotic diseases
- Live bats and materials not rendered non-infectious - **CDC permit required**  
<https://eipp.cdc.gov/>
- Dead bats must have certificate of non-infectiousness



1. Missing/Improper Paperwork
2. Improper Packaging/Labeling
3. Failure to Declare or Declare Accurately

## **Common Entry Issues**

# Missing/Improper Paperwork

Live animals – documents depend on species/country  
Biologics and Vectors

- CDC Permit to Import Infectious Biological Agents, Infectious Substances, and Vectors  
<https://eipp.cdc.gov/>



<https://www.cdc.gov/cpr/ipp/index.htm>

OR

- Importer Certification Statement on Official Letterhead
- ✓ A detailed description of materials
- ✓ Statement affirming:
  - ✓ Material not infectious
  - ✓ Why the material is not believed to be infectious
  - ✓ How the material was rendered noninfectious

# Improper Packaging/Labeling

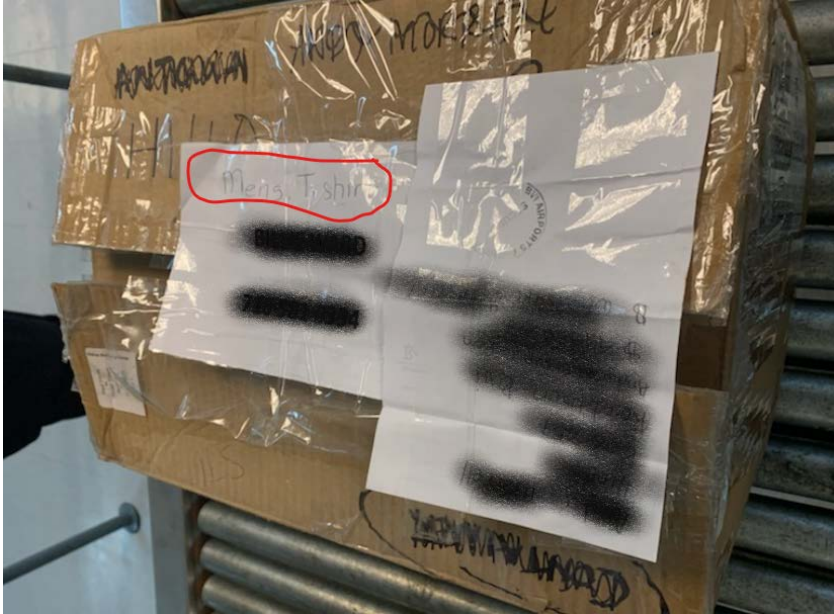


- ✓ Biologics and vectors must be packaged, labeled, and shipped in accordance with Department of Transportation regulations

## Example: human tissues

- ✗ Does not meet DOT requirements
- ✗ Leaking/improper packaging
- ✗ No CDC Permit or importer certification statement

# Failure to Declare or Declare Accurately



- ✓ Must be declared to Customs and Border Protection
- ✓ Must be entered and manifested correctly

Example: biologic samples concealed in box of T-shirts

- ✗ Not declared on the manifest
- ✗ Not labeled appropriately
- ✗ Not packaged appropriately

# Examples of What Not to Do

# Bat Blood from Mexico



Photo credit: CDC quarantine stations

## Cholera from Ghana



Photo credit: CDC quarantine stations



# 216 vials of monkey serum from South Korea for research

- ✓ On cargo manifest
- ✓ US Fish and Wildlife Permit
- ✓ CITES Permit
- ✓ USDA Statement of Non-infectiousness
- X No CDC Permit to Import Infectious Biological Agents, Infectious Substances, and Vectors
- X No importer certification statement

# Human Heads Manifested as Electronics



Photo credit: CDC quarantine stations

# Human Tissue from Canada



Photo credit: CDC quarantine stations

# **Tips for Importing Biologics and Vectors Safely**

# Tips for Importing Biologics and Vectors Safely

- Start preparation early
- Consult the specialists at your company or academic institution who are experts in storing, packaging, and transporting infectious biological agents, infectious substances, and vectors
- Reach out to federal and state agencies that have regulatory oversight for guidance BEFORE you ship
- Be transparent with customs officials

# Acknowledgments

- CDC Quarantine Station Staff
- CDC Division of Select Agents and Toxins Import Permit Program
- CDC Quarantine and Border Health Services Branch, Zoonoses Team
- State public health officials
- State animal health officials
- US Department of Agriculture
- US Customs and Border Protection
- US Fish and Wildlife Service

## Resources:

DSAT IPP email [importpermit@cdc.gov](mailto:importpermit@cdc.gov)

DSAT IPP phone 404-718-2077

DSAT IPP website [www.cdc.gov/cpr/ipp/index.htm](http://www.cdc.gov/cpr/ipp/index.htm)

DGMQ Importation website [www.cdc.gov/importation/index.html](http://www.cdc.gov/importation/index.html)

DGMQ Animal Imports email: [cdcanimalimports@cdc.gov](mailto:cdcanimalimports@cdc.gov)