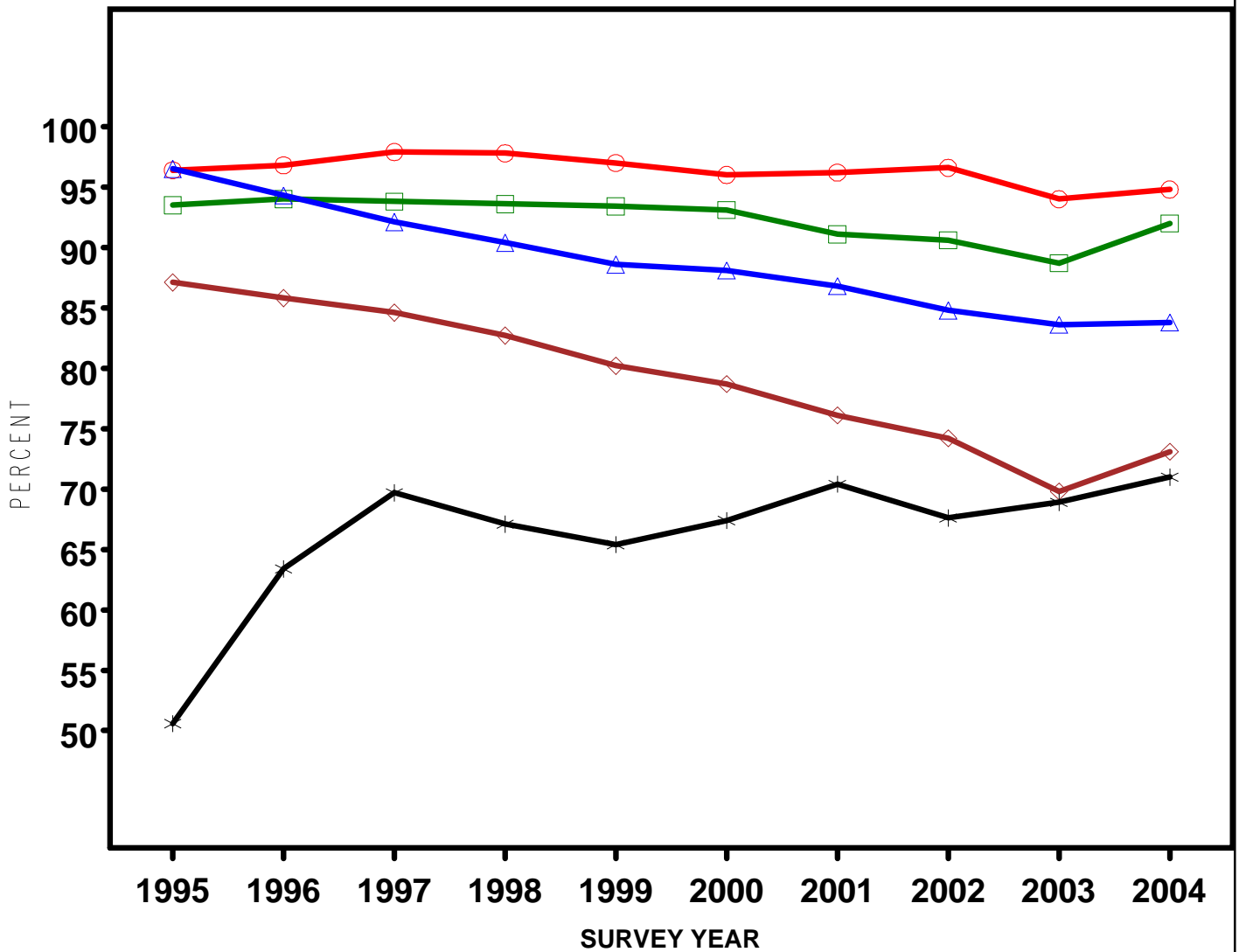


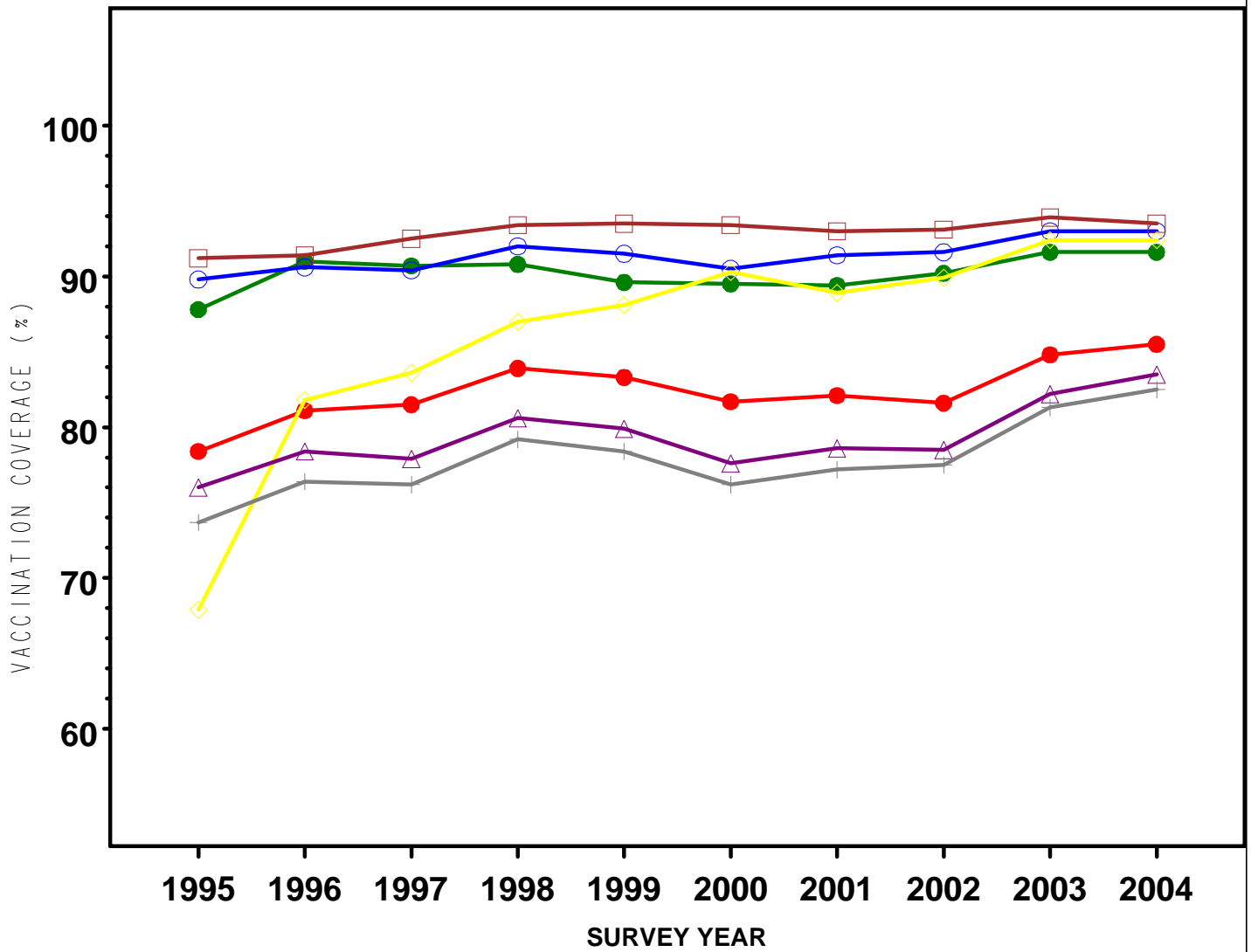
**FIGURE 1. TRENDS IN KEY INDICATORS FROM HOUSEHOLD AND PROVIDER DATA COLLECTION, NATIONAL IMMUNIZATION SURVEY, 1995-2004**



- Key Indicator**
- **Screening Completion Rate**
  - **Interview Completion Rate**
  - ▲—▲ **Resolution Rate**
  - ◆—◆ **Casro Response Rate**
  - \*—\* **Percentage of Children with Adequate Provider Data**

Source: See Table 1 and NIS Data User's Guides for Definition of Key Indicators

**FIGURE 2. TRENDS IN VACCINE-SPECIFIC COVERAGE (EXCEPT VARICELLA) AMONG CHILDREN AGED 19-35 MONTHS IN THE U.S., NATIONAL IMMUNIZATION SURVEY, 1995-2004**

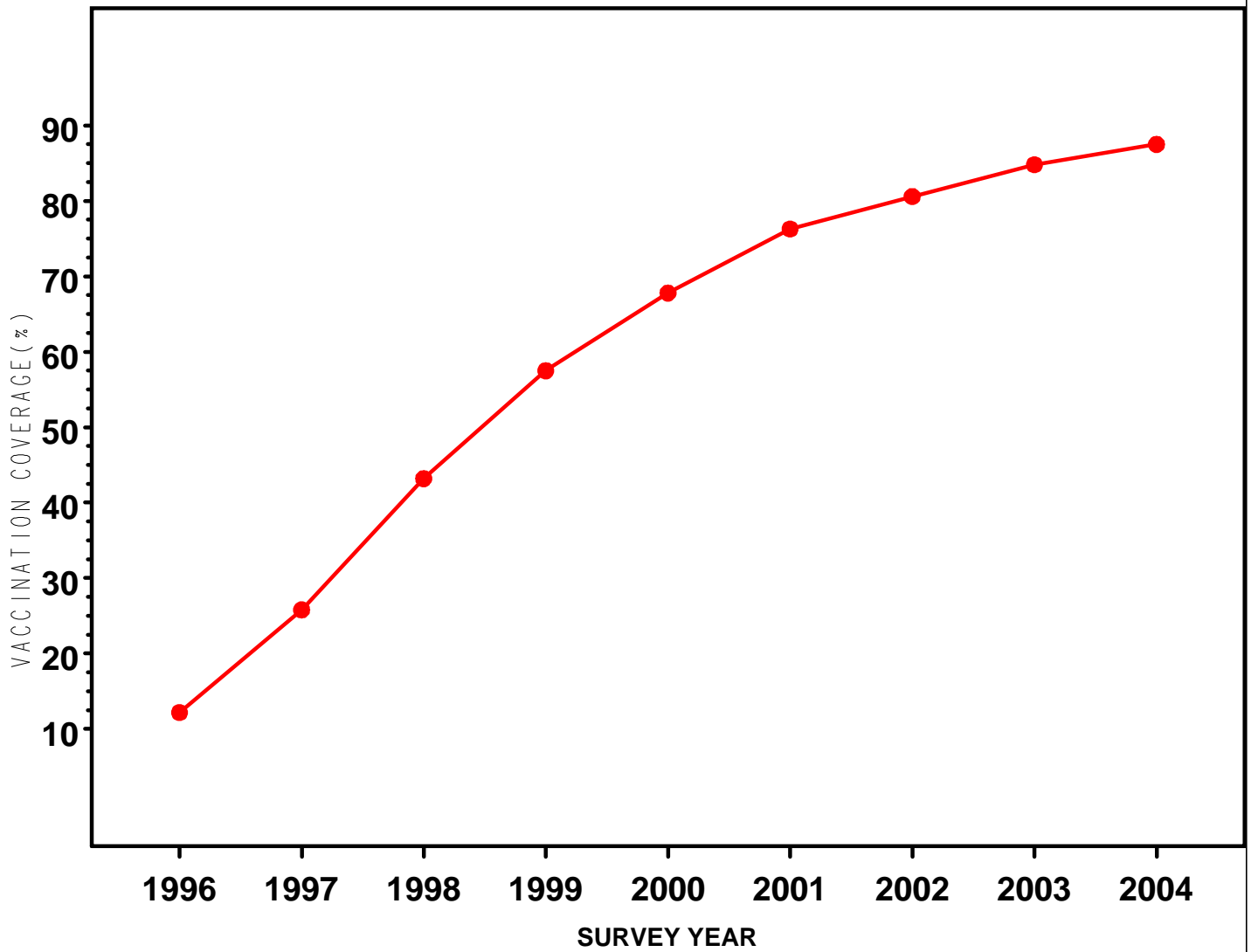


**Vaccine Type**    ●●●● 4+ DTP    ●●●● 3+ POLIO    ○○○○ 1+ MCV  
 □□□□ 3+ HIB    ◇◇◇◇ 3+ HEP B    ▲▲▲▲ 4:3:1  
 + + + + 4:3:1:3

Note: 4:3:1 (4 DTP, 3 POLIO and 1 MCV). 4:3:1:3 (4 DTP, 3 POLIO, 1 MCV and 3 Hib)

Source: See Table 2 for Vaccination Coverage Rates

**FIGURE 3. TRENDS IN VARICELLA COVERAGE AMONG CHILDREN AGED 19-35 MONTHS IN THE U.S., NATIONAL IMMUNIZATION SURVEY, 1996-2004**



**Note: Varicella was added to the NIS in 1996**

**Source: See Table 2 for Vaccination Coverage Rates**

**TABLE 1: KEY INDICATORS FROM HOUSEHOLD AND PROVIDER DATA COLLECTION BY SURVEY YEAR, NATIONAL IMMUNIZATION SURVEY, 1995-2004**

<b>Key Indicator*</b>	<b>Survey Year</b>									
	<b>1995</b>	<b>1996</b>	<b>1997</b>	<b>1998</b>	<b>1999</b>	<b>2000</b>	<b>2001</b>	<b>2002</b>	<b>2003</b>	<b>2004</b>
Resolution Rate (%)	96.5	94.3	92.1	90.4	88.6	88.1	86.8	84.8	83.6	83.8
Screener Completion Rate (%)	96.4	96.8	97.9	97.8	97.0	96.0	96.2	96.6	94.0	94.8
Interview Completion Rate (%)	93.5	94.0	93.8	93.6	93.4	93.1	91.1	90.6	88.7	92.0
CASRO Response Rate (%)	87.1	85.8	84.6	82.7	80.2	78.7	76.1	74.2	69.8	73.1
Children with Adequate Provider Data (%)	50.6	63.4	69.7	67.1	65.4	67.4	70.4	67.6	68.9	71.0

\* For definition of key indicators see Table 1 of NIS Data User's Guides.

**TABLE 2: VACCINE-SPECIFIC COVERAGE LEVELS AMONG CHILDREN AGED 19-35 MONTHS IN THE UNITED STATES BY SURVEY YEAR, NATIONAL IMMUNIZATION SURVEY, 1995-2004**

Vaccine Type	Survey Year									
	1995	1996	1997	1998	1999	2000	2001	2002	2003	2004
4+ DTP	78.4	81.1	81.5	83.9	83.3	81.7	82.1	81.6	84.8	85.5
3+ Polio	87.8	91.0	90.7	90.8	89.6	89.5	89.4	90.2	91.6	91.6
1+ MCV	89.8	90.6	90.4	92.0	91.5	90.5	91.4	91.6	93.0	93.0
3+ Hib	91.2	91.4	92.5	93.4	93.5	93.4	93.0	93.1	93.9	93.5
3+ Hep B	67.9	81.8	83.6	87.0	88.1	90.3	88.9	89.9	92.4	92.4
4:3:1*	76.0	78.4	77.9	80.6	79.9	77.6	78.6	78.5	82.2	83.5
4:3:1:3*	73.7	76.4	76.2	79.2	78.4	76.2	77.2	77.5	81.3	82.5
1+ Varicella*	N.A.	12.2	25.8	43.2	57.5	67.8	76.3	80.6	84.8	87.5

\* Varicella was added to the NIS in 1996. 4:3:1 series (4 DTP, 3 Polio, and 1 MCV).

4:3:1:3 series (4 DTP, 3 Polio, 1 MCV, and 3 Hib).

Source: <http://www.cdc.gov/nip/coverage>