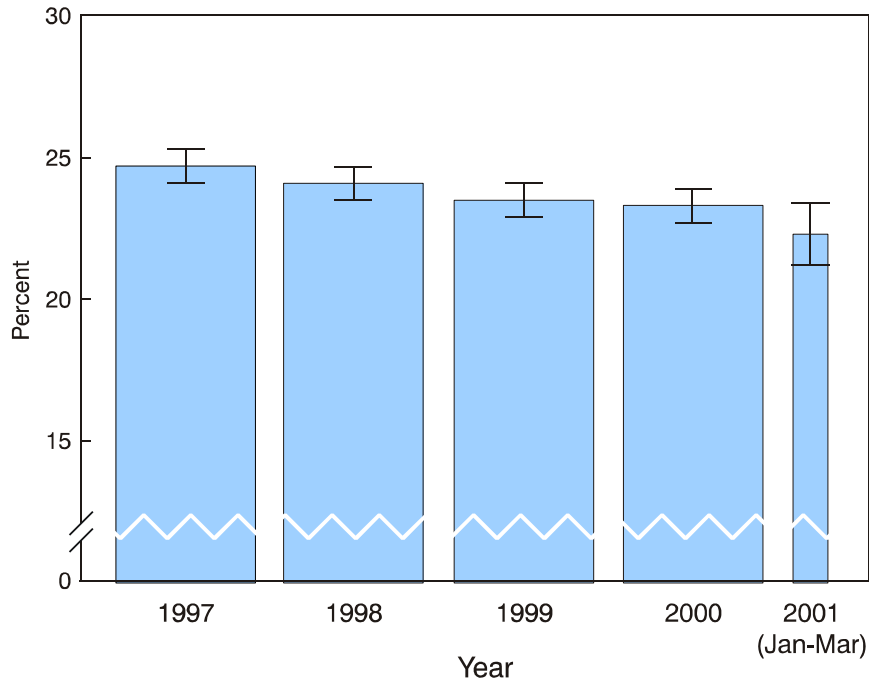


Figure 8.1. Prevalence of current smoking among adults aged 18 years and older: United States, 1997 - 2001

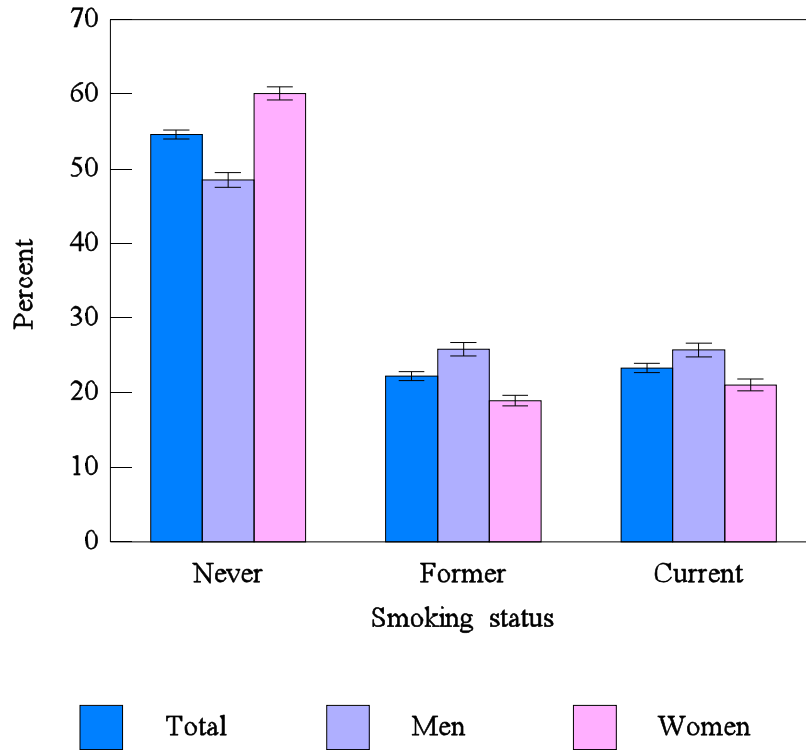


DATA SOURCE: Sample Adult Core component of the 1997-2001 National Health Interview Surveys. The estimate for the year 2001 was based on data collected from January-March.

NOTES: Current smokers were defined as those who smoked more than 100 cigarettes in their lifetimes and now smoke every day or some days. The analysis excluded people with unknown smoking status. Brackets indicate 95% confidence intervals (CI).

- ! In early 2001, 22.3% (95% CI = 21.2% - 23.4%) of adults aged 18 years and older were current smokers, continuing a decline in the prevalence of current smoking among adults in the United States.
- ! The annual prevalence of current smoking among U.S. adults declined slightly over time from 24.7% in 1997 to 24.1% in 1998, 23.5% in 1999, and 23.3% in 2000.

Figure 8.2. Percent distribution of smoking status among adults aged 18 years and older, by sex: United States, 2000

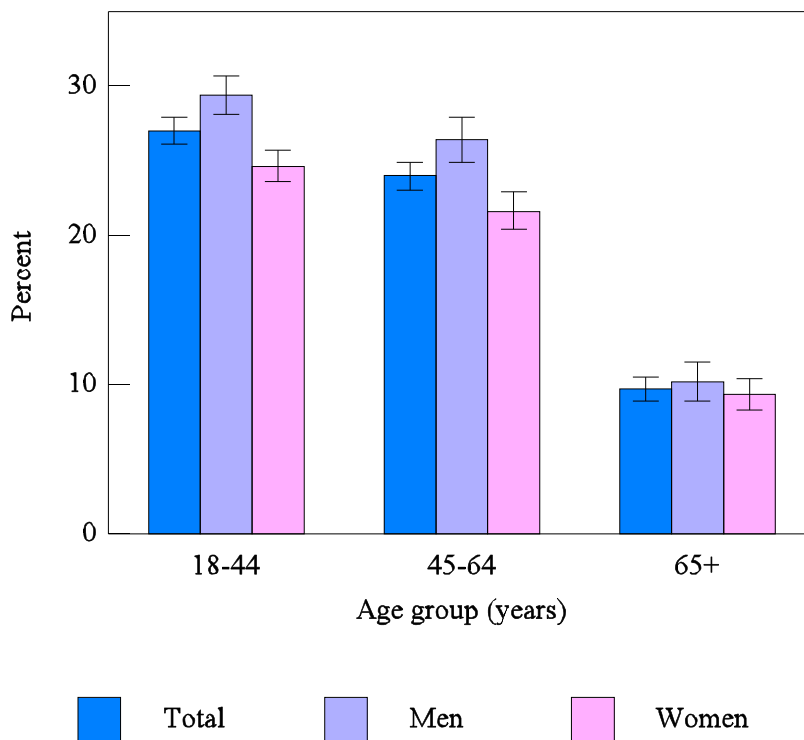


DATA SOURCE: Sample Adult Core component of the 2000 National Health Interview Survey.

NOTES: Current smokers were defined as those who smoked more than 100 cigarettes in their lifetime and now smoke every day or some days. The analysis excluded 301 people with unknown smoking status. Brackets indicate 95% confidence intervals (CI).

- ! The percent of current smokers was higher for men (25.7%, 95% CI = 24.8%-26.6%) than for women (21.0%, 95% CI = 20.2% - 21.8%).
- ! The percent of former smokers was also higher for men than for women, whereas the percent of those who had never smoked was higher for women than for men.

Figure 8.3. Prevalence of current smoking among adults aged 18 years and older, by sex and age group: United States, 2000

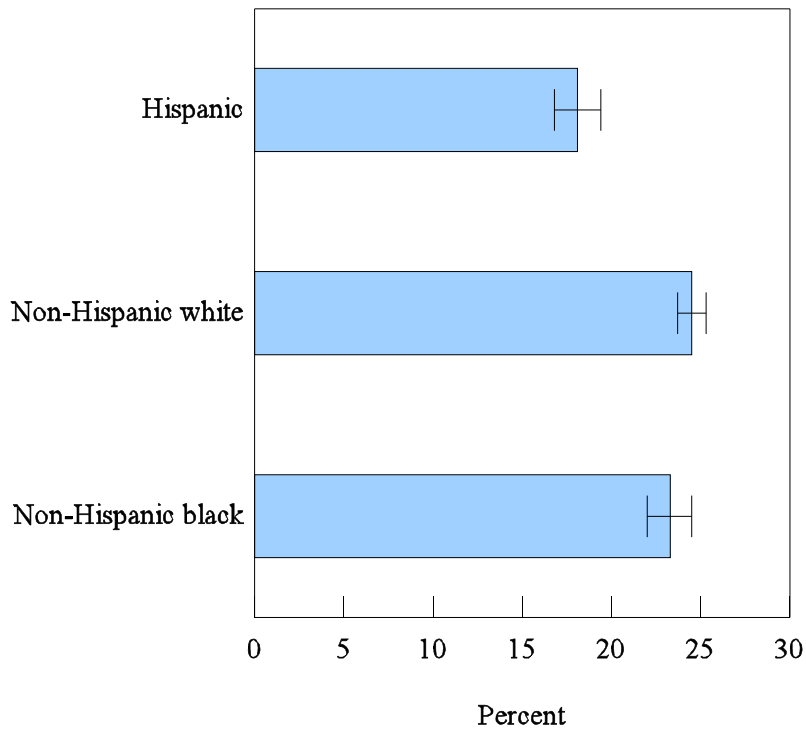


DATA SOURCE: Sample Adult Core component of the 2000 National Health Interview Survey.

NOTES: Current smokers were defined as those who smoked more than 100 cigarettes in their lifetime and now smoke every day or some days. The analysis excluded 301 people with unknown smoking status. Brackets indicate 95% confidence intervals (CI).

- ! For both sexes combined, the prevalence of current smoking was lower among adults aged 65 years and older (9.7%, 95% CI = 8.9%-10.5%), compared with adults aged 18-44 years (27.0%, 95% CI = 26.1%-27.9%) and adults aged 45-64 years (24.0%, 95% CI = 23.0%-24.9%). This pattern in current smoking by age group was seen in both men and women.
- ! A significant difference between men and women in current smoking was seen at age groups 18-44 and 45-64 years, but not at age group 65 years and older.

Figure 8.4. Age-sex-adjusted prevalence of current smoking among adults aged 18 years and older, by race/ethnicity: United States, 2000



DATA SOURCE: Sample Adult Core component of the 2000 National Health Interview Survey.

NOTES: Current smokers were defined as those who smoked more than 100 cigarettes in their lifetime and now smoke every day or some days. The analysis excluded 301 people with unknown smoking status. Brackets indicate 95% confidence intervals.

! The age-sex-adjusted prevalence of current smoking was higher for non-Hispanic white (24.5%) and non-Hispanic black adults (23.3%) than for Hispanic adults (18.1%).

Data tables for figures 8.1-8.4:

Figure 8.1. Prevalence of current smoking among adults aged 18 years and older: United States, 1997-2001

Year	Percent	95% Confidence interval
1997	24.7	24.1-25.3
1998	24.1	23.5-24.7
1999	23.5	22.9-24.1
2000	23.3	22.7-23.9
2001 (Jan-Mar)	22.3	21.2-23.4

Figure 8.2. Percent distribution of smoking status among adults aged 18 years and older, by sex: United States, 2000

Smoking status and sex	Percent	95% Confidence interval
Never		
Total	54.6	54.0-55.2
Men	48.5	47.5-49.5
Women	60.1	59.2-61.0
Former		
Total	22.2	21.6-22.8
Men	25.8	24.9-26.7
Women	18.9	18.2-19.6
Current		
Total	23.3	22.7-23.9
Men	25.7	24.8-26.6
Women	21.0	20.2-21.8

Figure 8.3. Prevalence of current smoking among adults aged 18 years and older, by sex and age group: United States, 2000

Age and Sex	Percent	95% Confidence interval
18-44 years		
Total	27.0	26.1-27.9
Men	29.4	28.1-30.7
Women	24.6	23.6-25.7
45-64 years		
Total	24.0	23.0-24.9
Men	26.4	24.9-27.9
Women	21.6	20.4-22.9
65 years and older		
Total	9.7	8.9-10.5
Men	10.2	8.9-11.5
Women	9.3	8.3-10.4

Figure 8.4. Age-sex-adjusted prevalence of current smoking among adults aged 18 years and older, by race/ethnicity: United States, 2000

Race/Ethnicity	Percent	95% Confidence interval
Hispanic	18.1	16.8-19.4
Non-Hispanic white	24.5	23.7-25.3
Non-Hispanic black	23.3	22.0-24.5