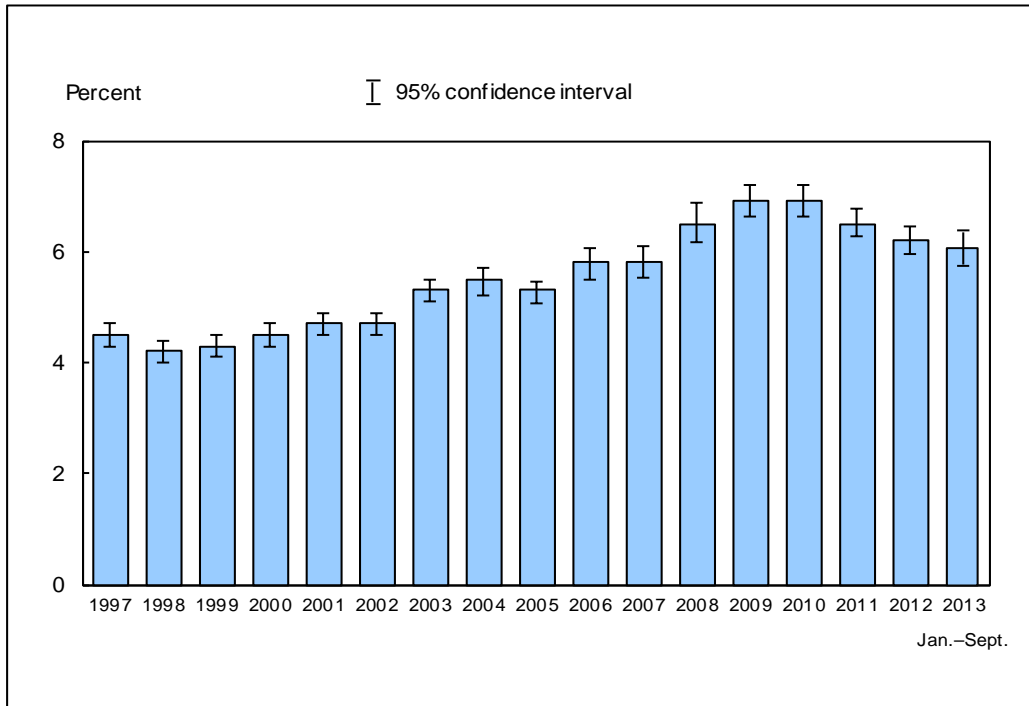


Figure 3.1. Percentage of persons of all ages who failed to obtain needed medical care due to cost at some time during the past 12 months: United States, 1997–September 2013

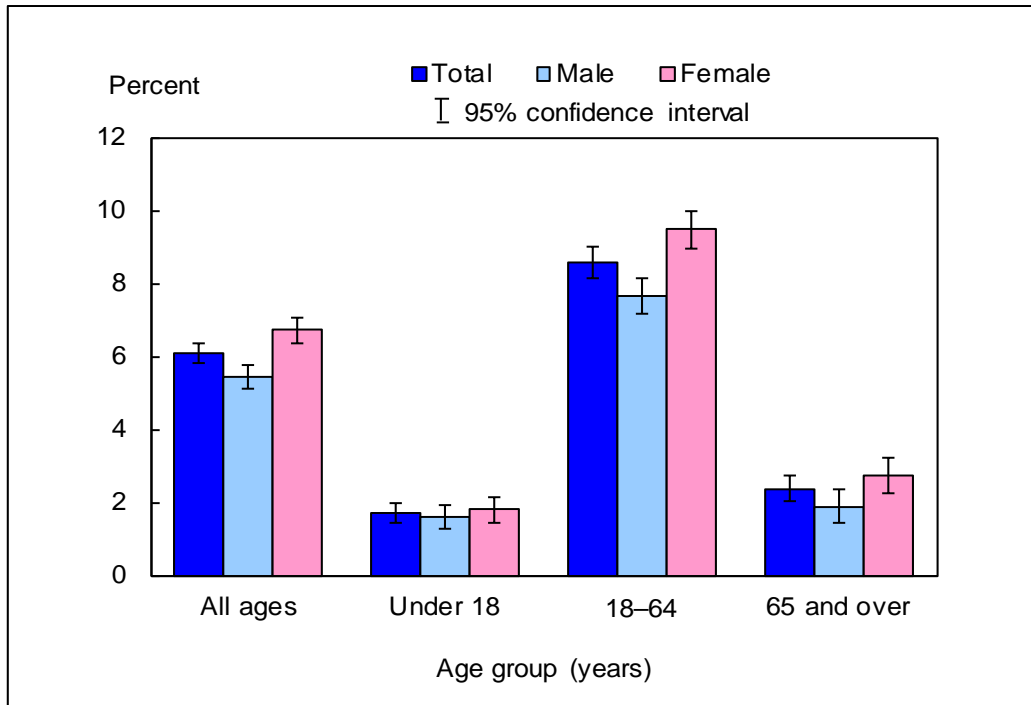


DATA SOURCE: CDC/NCHS, National Health Interview Survey, 1997–September 2013, Family Core component.

- For January–September 2013, 6.1% (95% confidence interval = 5.80%–6.36%) of the population failed to obtain needed medical care due to cost at some time during the past 12 months; this was not significantly different from the 2012 estimate of 6.2%.
- The percentage of persons who failed to obtain needed medical care due to cost increased from 4.3% in 1999 to 6.9% in 2009 and 2010 then decreased to 6.1% in January–September 2013.

NOTES: Data are based on household interviews of a sample of the civilian noninstitutionalized population. • The analyses excluded persons with unknown responses to the question on failure to obtain needed medical care due to cost (about 0.2% of respondents each year). • See [Technical Notes](#) for more details.

Figure 3.2. Percentage of persons of all ages who failed to obtain needed medical care due to cost at some time during the past 12 months, by age group and sex: United States, January–September 2013

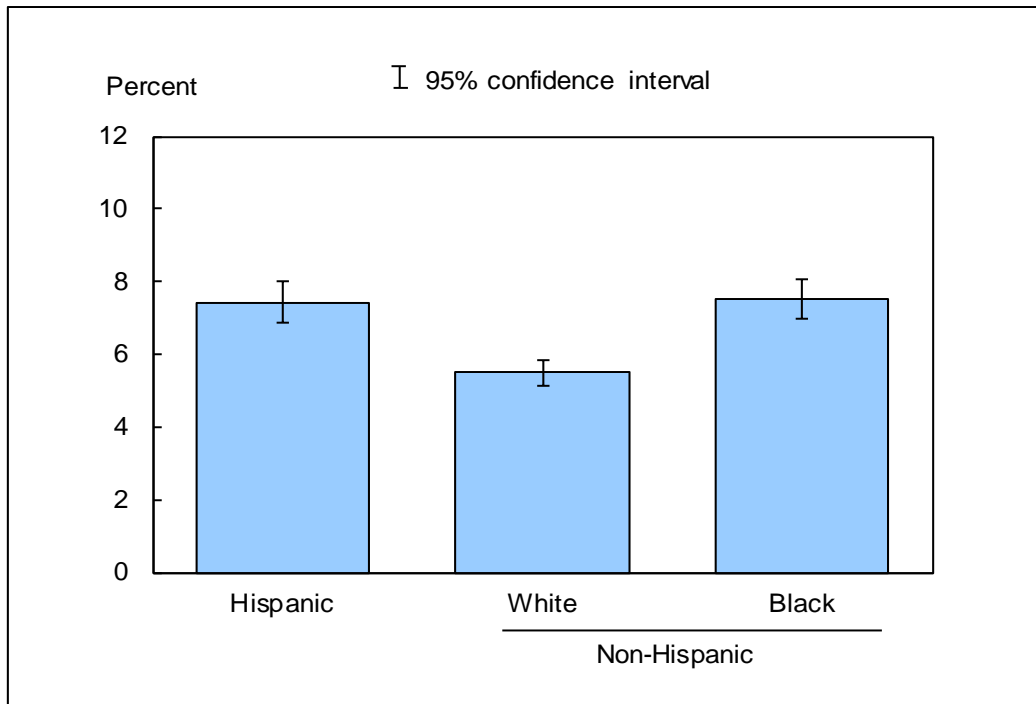


DATA SOURCE: CDC/NCHS, National Health Interview Survey, January–September 2013, Family Core component.

- For both sexes combined, the percentage of persons who failed to obtain needed medical care due to cost at some time during the past 12 months was 1.7% for those under age 18, 8.6% for those aged 18–64, and 2.4% for those aged 65 and over. Adults aged 18–64 were more likely than children under age 18 and adults aged 65 and over to have failed to obtain needed medical care due to cost.
- For persons of all ages combined, as well as for age groups 18–64 and 65 and over, females were more likely than males to have failed to obtain needed medical care due to cost during the past 12 months.

NOTES: Data are based on household interviews of a sample of the civilian noninstitutionalized population. • The analyses excluded the 0.1% persons with unknown responses to the question on failure to obtain needed medical care due to cost. • See [Technical Notes](#) for more details.

Figure 3.3. Age-sex-adjusted percentage of persons of all ages who failed to obtain needed medical care due to cost at some time during the past 12 months, by race/ethnicity: United States, January–September 2013



DATA SOURCE: CDC/NCHS, National Health Interview Survey, January–September 2013, Family Core component.

- After adjustment for age and sex, 7.4% of Hispanic persons, 5.5% of non-Hispanic white persons, and 7.5% of non-Hispanic black persons failed to obtain needed medical care due to cost at some time during the year preceding the interview.
- Hispanic persons and non-Hispanic black persons were more likely than non-Hispanic white persons to have failed to obtain needed medical care due to cost.

NOTES: Data are based on household interviews of a sample of the civilian noninstitutionalized population. • The analyses excluded the 0.1% of persons with unknown responses to the question on failure to obtain needed medical care due to cost. • Estimates are age-sex adjusted using the projected 2000 U.S. population as the standard population and using three age groups: under 18, 18–64, and 65 and over. • See [Technical Notes](#) for more details.

Data tables for Figures 3.1–3.3:

Data table for Figure 3.1. Percentage of persons of all ages who failed to obtain needed medical care due to cost at some time during the past 12 months: United States, 1997–September 2013

Year	Crude ¹ percent (95% confidence interval)	Age-adjusted ² percent (95% confidence interval)
1997	4.5 (4.3–4.7)	4.5 (4.4–4.7)
1998	4.2 (4.0–4.4)	4.2 (4.0–4.4)
1999	4.3 (4.1–4.5)	4.3 (4.1–4.5)
2000	4.5 (4.3–4.7)	4.5 (4.2–4.7)
2001	4.7 (4.5–4.9)	4.7 (4.5–4.9)
2002	4.7 (4.5–4.9)	4.7 (4.5–4.9)
2003	5.3 (5.1–5.5)	5.2 (5.0–5.5)
2004	5.5 (5.2–5.7)	5.4 (5.2–5.6)
2005	5.3 (5.05–5.45)	5.2 (4.99–5.40)
2006	5.8 (5.49–6.07)	5.7 (5.42–6.00)
2007	5.8 (5.54–6.11)	5.8 (5.47–6.03)
2008	6.5 (6.17–6.87)	6.4 (6.09–6.78)
2009	6.9 (6.62–7.21)	6.8 (6.54–7.12)
2010	6.9 (6.64–7.20)	6.8 (6.56–7.10)
2011	6.5 (6.26–6.77)	6.4 (6.18–6.68)
2012	6.2 (5.96–6.45)	6.1 (5.89–6.36)
January–September 2013	6.1 (5.80–6.36)	6.0 (5.73–6.29)

¹Crude estimates are presented in the figure.

²Estimates are age adjusted using the projected 2000 U.S. population as the standard population and using three age groups: under 18, 18–64, and 65 and over.

NOTES: Data are based on household interviews of a sample of the civilian noninstitutionalized population. Beginning with the 2012 data, the National Health Interview Survey transitioned to weights derived from the 2010 census. For 2003–2011 data, weights were derived from the 2000 census. In this Early Release, estimates for 2000–2002 were recalculated using weights derived from the 2000 census. For 1997–1999 data, weights were derived from the 1990 census. See [Technical Notes](#) for more details.

DATA SOURCE: CDC/NCHS, National Health Interview Survey, 1997–September 2013, Family Core component.

Data table for Figure 3.2. Percentage of persons of all ages who failed to obtain needed medical care due to cost at some time during the past 12 months, by age group and sex: United States, January–September 2013

Age (years) and sex	Percent	95% confidence interval
Under 18, total	1.7	1.42–1.96
Under 18, male	1.6	1.27–1.91
Under 18, female	1.8	1.44–2.13
18–64, total	8.6	8.15–8.99
18–64, male	7.6	7.17–8.12
18–64, female	9.5	8.96–9.96
65 and over, total	2.4	2.02–2.71
65 and over, male	1.9	1.41–2.35
65 and over, female	2.7	2.27–3.23
All ages (crude ¹), total	6.1	5.80–6.36
All ages (crude ¹), male	5.4	5.10–5.75
All ages (crude ¹), female	6.7	6.37–7.04
All ages (age-adjusted ²), total	6.0	5.73–6.29
All ages (age-adjusted ²), male	5.4	5.04–5.68
All ages (age-adjusted ²), female	6.6	6.30–6.97

¹Crude estimates are presented in the figure.

²Estimates are age adjusted using the projected 2000 U.S. population as the standard population and using three age groups: under 18, 18–64, and 65 and over.

NOTE: Data are based on household interviews of a sample of the civilian noninstitutionalized population.

DATA SOURCE: CDC/NCHS, National Health Interview Survey, January–September 2013, Family Core component.

Data table for Figure 3.3. Age-sex-adjusted percentage of persons of all ages who failed to obtain needed medical care due to cost at some time during the past 12 months, by race/ethnicity: United States, January–September 2013

Race/ethnicity	Percent ¹	95% confidence interval
Hispanic or Latino	7.4	6.85–7.99
Not Hispanic or Latino, single race, white	5.5	5.12–5.85
Not Hispanic or Latino, single race, black	7.5	6.98–8.09

¹Estimates are age-sex adjusted using the projected 2000 U.S. population as the standard population and using three age groups: under 18, 18–64, and 65 and over.

NOTE: Data are based on household interviews of a sample of the civilian noninstitutionalized population.

DATA SOURCE: CDC/NCHS, National Health Interview Survey, January–September 2013, Family Core component.