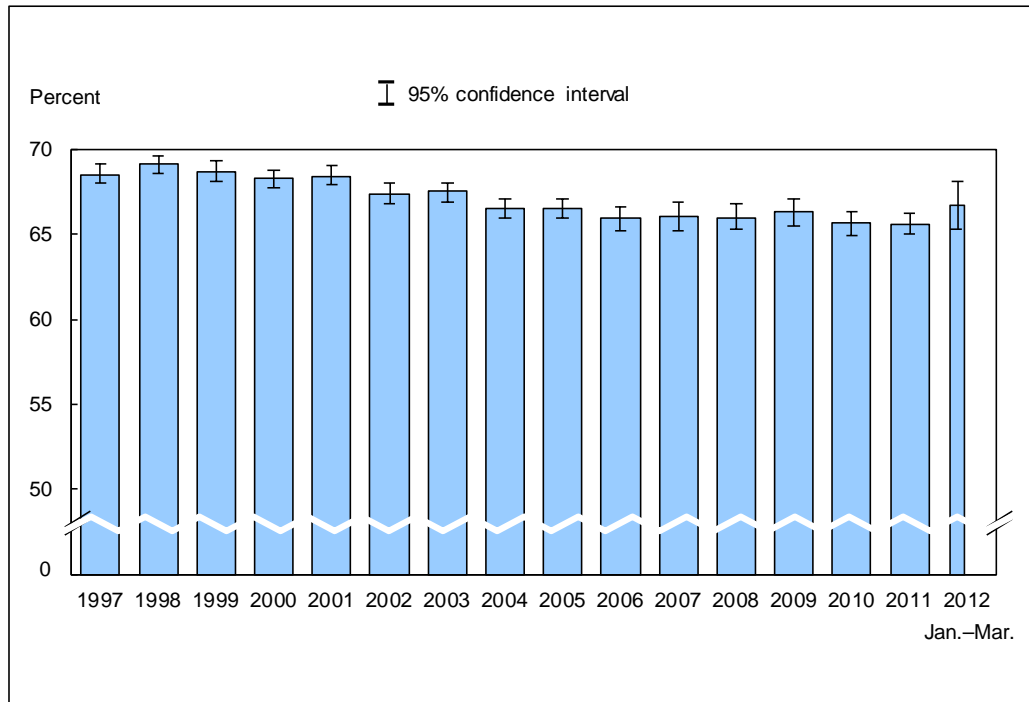


Figure 11.1. Percentage of persons of all ages who had excellent or very good health: United States, 1997–March 2012

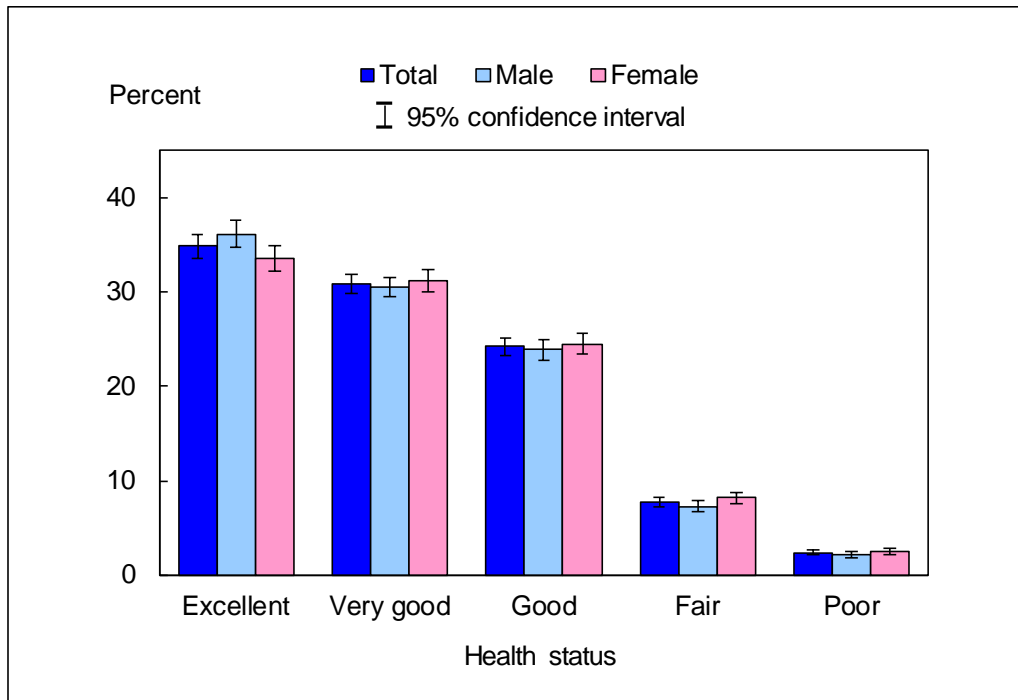


DATA SOURCE: CDC/NCHS, National Health Interview Survey, 1997–March 2012, Family Core component.

- In early 2012, the percentage of persons who had excellent or very good health was 66.7% (95% confidence interval = 65.29%–68.03%), which was higher than, but not significantly different from, the 2011 estimate of 65.6%.
- The percentage of persons who had excellent or very good health generally decreased from 68.5% in 1997 to 65.6% in 2011.

NOTES: Data are based on household interviews of a sample of the civilian noninstitutionalized population. • Health status data were obtained by asking respondents to assess their own health and that of family members living in the same household as excellent, very good, good, fair, or poor. • The analyses excluded persons with unknown health status (about 0.2% of respondents each year). • See [Technical Notes](#) for more details.

Figure 11.2. Percent distribution of respondent-assessed health status for all ages, by sex: United States, January–March 2012

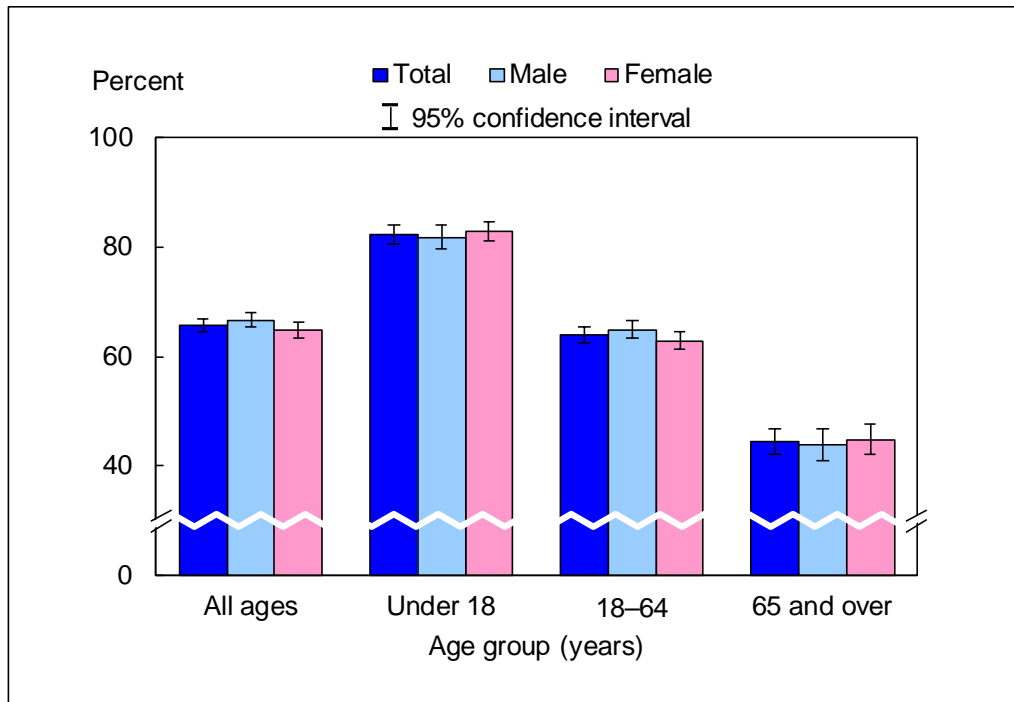


DATA SOURCE: CDC/NCHS, National Health Interview Survey, January–March 2012, Family Core component.

- For both sexes combined, most persons' health was either excellent (34.8%) or very good (30.9%). Smaller percentages of persons had good (24.2%), fair (7.7%), or poor (2.3%) health.
- Compared with males, females were less likely to have excellent health and more likely to have fair health.

NOTES: Data are based on household interviews of a sample of the civilian noninstitutionalized population. • Health status data were obtained by asking respondents to assess their own health and that of family members living in the same household as excellent, very good, good, fair, or poor. • The analyses excluded 0.1% of persons with unknown health status. • See [Technical Notes](#) for more details.

Figure 11.3. Percentage of persons of all ages who had excellent or very good health, by age group and sex: United States, January–March 2012

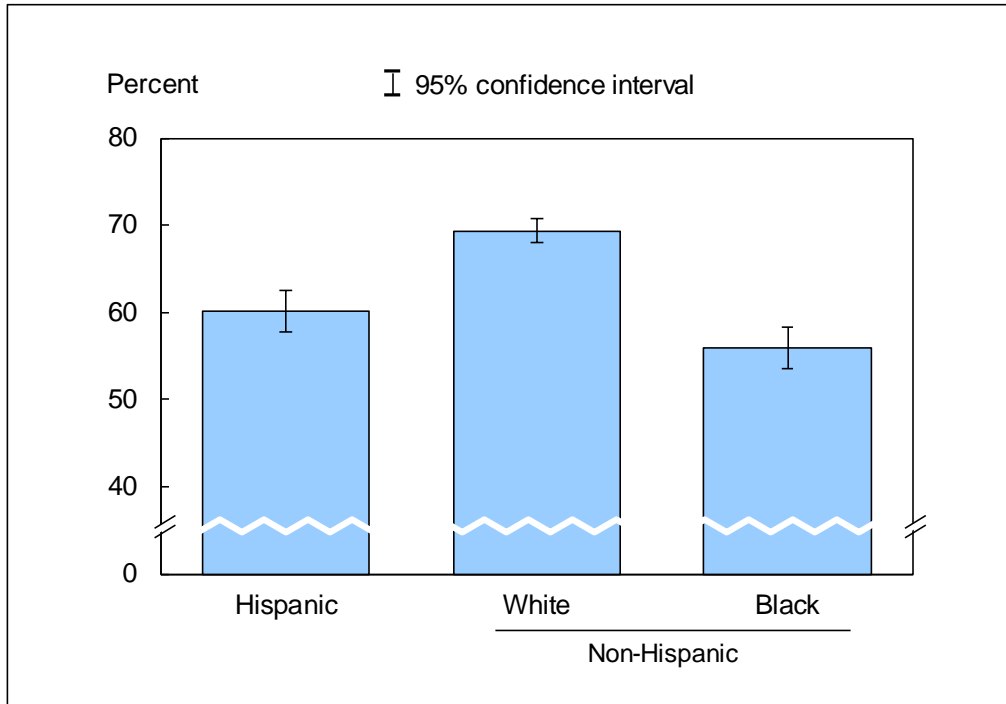


DATA SOURCE: CDC/NCHS, National Health Interview Survey, January–March 2012, Family Core component.

- For both sexes combined, the percentage of persons with excellent or very good health decreased with age: 82.3% for those under age 18, 63.9% for those aged 18–64, and 44.4% for those aged 65 and over. This pattern was seen in both men and women
- For all three age groups, there was no significant difference between men and women in having excellent or very good health.

NOTES: Data are based on household interviews of a sample of the civilian noninstitutionalized population. • Health status data were obtained by asking respondents to assess their own health and that of family members living in the same household as excellent, very good, good, fair, or poor. • The analyses excluded 0.1% of persons with unknown health status. • See [Technical Notes](#) for more details.

Figure 11.4. Age-sex-adjusted percentage of persons of all ages who had excellent or very good health, by race/ethnicity: United States, January–March 2012



DATA SOURCE: CDC/NCHS, National Health Interview Survey, January–March 2012, Family Core component.

- After adjustment for age and sex, the percentage of persons who had excellent or very good health was 60.1% for Hispanic persons, 69.4% for non-Hispanic white persons, and 55.9% for non-Hispanic black persons.
- The health of Hispanic persons and non-Hispanic black persons was less likely to be excellent or very good than that of non-Hispanic white persons.

NOTES: Data are based on household interviews of a sample of the civilian noninstitutionalized population. • Health status data were obtained by asking respondents to assess their own health and that of family members living in the same household as excellent, very good, good, fair, or poor. • The analyses excluded 0.1% of persons with unknown health status. • Estimates are age-sex adjusted using the projected 2000 U.S. population as the standard population and using three age groups: under 18, 18–64, and 65 and over. • See [Technical Notes](#) for more details.



Data tables for Figures 11.1–11.4:

Data table for Figure 11.1. Percentage of persons of all ages who had excellent or very good health: United States, 1997–March 2012

Year	Percent	95% confidence interval
1997	68.5	68.0-69.1
1998	69.1	68.6-69.6
1999	68.7	68.1-69.3
2000	68.3	67.7-68.8
2001	68.4	67.9-69.0
2002	67.4	66.8-68.0
2003	67.5	66.9-68.0
2004	66.5	66.0-67.1
2005	66.5	65.98-67.11
2006	65.9	65.25-66.61
2007	66.0	65.18-66.88
2008	66.0	65.30-66.79
2009	66.3	65.46-67.10
2010	65.7	64.95-66.35
2011	65.6	64.98-66.24
January–March 2012	66.7	65.29-68.03

NOTES: Data are based on household interviews of a sample of the civilian noninstitutionalized population. Beginning with the 2003 data, the National Health Interview Survey transitioned to weights derived from the 2000 census. In this Early Release, estimates for 2000–2002 were recalculated using weights derived from the 2000 census. See [Technical Notes](#) for more details.

DATA SOURCE: CDC/NCHS, National Health Interview Survey, 1997–March 2012, Family Core component.

Data table for Figure 11.2. Percent distribution of respondent-assessed health status, by sex for all ages: United States, January–March 2012

Health status and sex	Percent	95% confidence interval
Excellent, total	34.8	33.61-36.07
Excellent, male	36.2	34.79-37.56
Excellent, female	33.6	32.22-34.94
Very good, total	30.9	29.92-31.84
Very good, male	30.5	29.43-31.55
Very good, female	31.3	30.07-32.43
Good, total	24.2	23.21-25.18
Good, male	23.9	22.78-25.02
Good, female	24.5	23.35-25.60
Fair, total	7.7	7.25-8.23
Fair, male	7.2	6.66-7.83
Fair, female	8.2	7.61-8.80
Poor, total	2.3	2.09-2.60
Poor, male	2.2	1.88-2.51
Poor, female	2.5	2.16-2.81

NOTE: Data are based on household interviews of a sample of the civilian noninstitutionalized population.

DATA SOURCE: CDC/NCHS, National Health Interview Survey, January–March 2012, Family Core component.

Data table for Figure 11.3. Percentage of persons of all ages who had excellent or very good health, by age group and sex: United States, January–March 2012

Age (years) and sex	Percent	95% confidence interval
Under 18, total	82.3	80.61-84.05
Under 18, male	81.8	79.70-83.92
Under 18, female	82.9	81.02-84.72
18-64, total	63.9	62.56-65.29
18-64, male	65.0	63.46-66.49
18-64, female	62.9	61.33-64.49
65 and over, total	44.4	42.07-46.76
65 and over, male	43.9	40.89-46.88
65 and over, female	44.8	42.10-47.56
All ages (crude ¹), total	65.7	64.48-66.96
All ages (crude ¹), male	66.7	65.29-68.03
All ages (crude ¹), female	64.8	63.46-66.20
All ages (age-adjusted ²), total	66.2	64.99-67.42
All ages (age-adjusted ²), male	66.7	65.33-67.98
All ages (age-adjusted ²), female	65.8	64.43-67.11

¹Crude estimates are presented in the figure.

²Estimates are age adjusted using the projected 2000 U.S. population as the standard population and using three age groups: under 18, 18–64, and 65 and over.

NOTE: Data are based on household interviews of a sample of the civilian noninstitutionalized population.

DATA SOURCE: CDC/NCHS, National Health Interview Survey, January–March 2012, Family Core component.

Data table for Figure 11.4. Age-sex-adjusted percentage of persons of all ages who had excellent or very good health, by race/ethnicity: United States, January–March 2012

Race/ethnicity	Percent ¹	95% confidence interval
Hispanic or Latino	60.1	57.72-62.47
Not Hispanic or Latino, single race, white	69.4	67.97-70.75
Not Hispanic or Latino, single race, black	55.9	53.58-58.24

¹Estimates are age-sex adjusted using the projected 2000 U.S. population as the standard population and using three age groups: under 18, 18–64, and 65 and over.

NOTE: Data are based on household interviews of a sample of the civilian noninstitutionalized population.

DATA SOURCE: CDC/NCHS, National Health Interview Survey, January–March 2012, Family Core component.