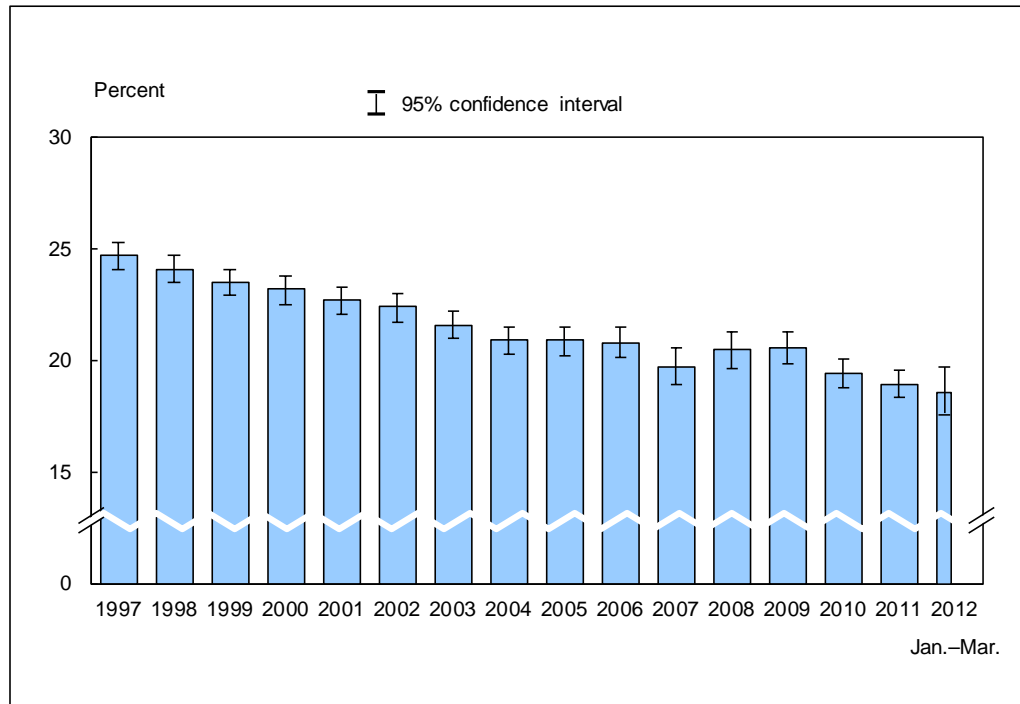


**Figure 8.1. Prevalence of current smoking among adults aged 18 and over: United States, 1997–March 2012**

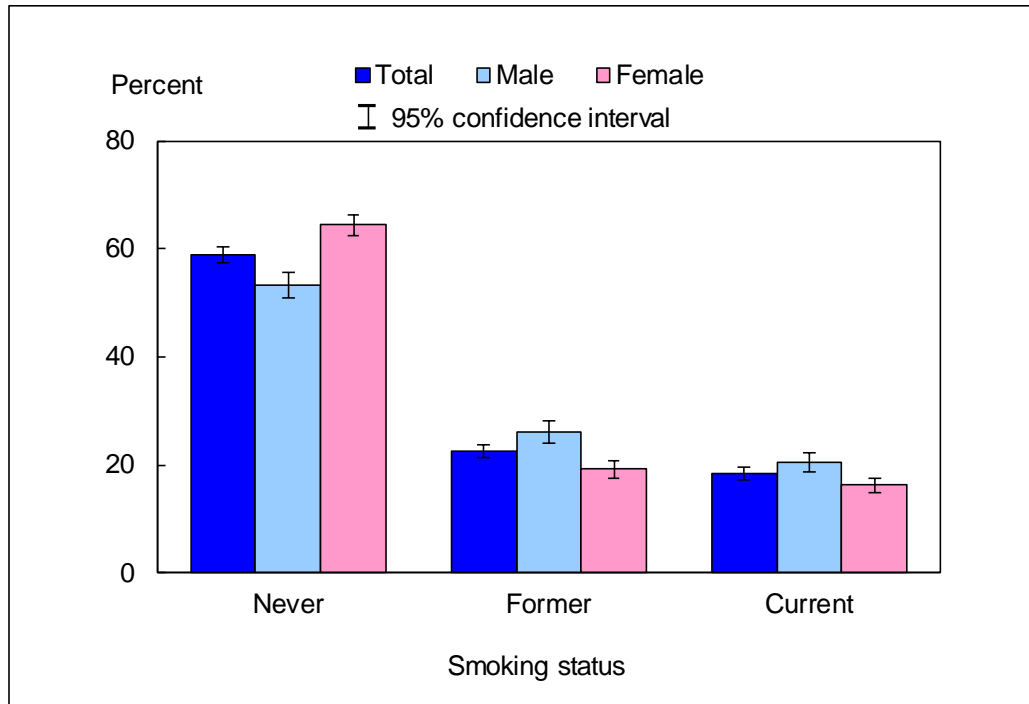


DATA SOURCE: CDC/NCHS, National Health Interview Survey, 1997–March 2012, Sample Adult Core component.

- In early 2012, the percentage of adults aged 18 and over who were current smokers was 18.4% (95% confidence interval = 17.23%–19.51%), which was not significantly different from the 2011 estimate of 18.9%.
- The prevalence of current smoking among U.S. adults generally declined from 24.7% in 1997 to 18.4% in early 2012.

NOTES: Data are based on household interviews of a sample of the civilian noninstitutionalized population. • Current smokers were defined as those who had smoked more than 100 cigarettes in their lifetime and now smoke every day or some days. • The analyses excluded persons with unknown smoking status (about 2% of respondents each year). • See [Technical Notes](#) for more details.

**Figure 8.2. Percent distribution of smoking status among adults aged 18 and over, by sex: United States, January–March 2012**

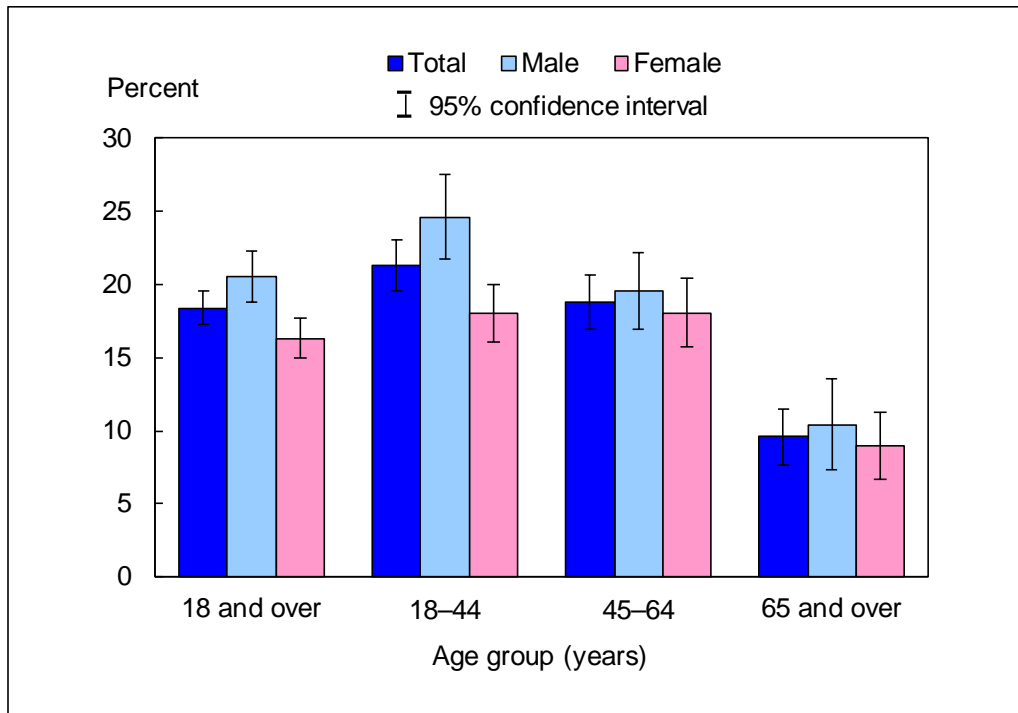


DATA SOURCE: CDC/NCHS, National Health Interview Survey, January–March 2012, Sample Adult Core component.

- The percentage of current smokers was higher for men (20.6%) than for women (16.3%).
- The percentage of former smokers was higher for men (26.2%) than for women (19.3%).
- The percentage of those who had never smoked was higher for women (64.4%) than for men (53.2%).

NOTES: Data are based on household interviews of a sample of the civilian noninstitutionalized population. • Current smokers were defined as those who had smoked more than 100 cigarettes in their lifetime and now smoke every day or some days. • The analyses excluded 1.0% of persons with unknown smoking status. • See [Technical Notes](#) for more details.

**Figure 8.3. Prevalence of current smoking among adults aged 18 and over, by age group and sex: United States, January–March 2012**

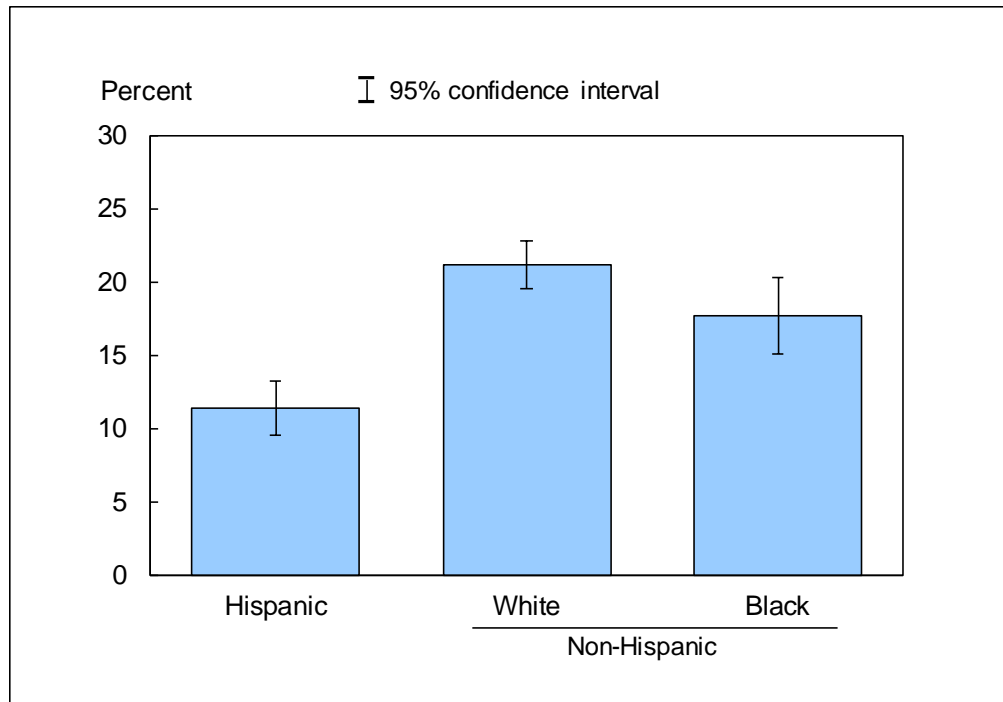


DATA SOURCE: CDC/NCHS, National Health Interview Survey, January–March 2012, Sample Adult Core component.

- For both sexes combined, the percentage of adults who were current smokers was lower among adults aged 65 and over (9.6%) than among adults aged 18–44 (21.3%) and 45–64 (18.8%). This pattern in current smoking by age group was seen in both men and women.
- For the age group 18–44, men (24.6%) were more likely than women (18.0%) to be current smokers.

NOTES: Data are based on household interviews of a sample of the civilian noninstitutionalized population. • Current smokers were defined as those who had smoked more than 100 cigarettes in their lifetime and now smoke every day or some days. • The analyses excluded 1.0% of persons with unknown smoking status. • See [Technical Notes](#) for more details.

**Figure 8.4. Age-sex-adjusted prevalence of current smoking among adults aged 18 and over, by race/ethnicity: United States, January–March 2012**



DATA SOURCE: CDC/NCHS, National Health Interview Survey, January–March 2012, Sample Adult Core component.

- The age-sex-adjusted prevalence of current smoking was 11.4% for Hispanic persons, 21.2% for non-Hispanic white persons, and 17.7% for non-Hispanic black persons.
- Non-Hispanic white adults were the most likely to be current smokers, followed by non-Hispanic black adults and Hispanic adults.

NOTES: Data are based on household interviews of a sample of the civilian noninstitutionalized population. • Current smokers were defined as those who had smoked more than 100 cigarettes in their lifetime and now smoke every day or some days. • The analyses excluded 1.0% of persons with unknown smoking status. • Estimates are age-sex adjusted using the projected 2000 U.S. population as the standard population and using five age groups: 18–24, 25–34, 35–44, 45–64, and 65 and over. • See [Technical Notes](#) for more details.

## Data tables for Figures 8.1–8.4:

### Data table for Figure 8.1. Prevalence of current smoking among adults aged 18 and over: United States, 1997–March 2012

Year	Crude <sup>1</sup> percent (95% confidence interval)	Age-adjusted <sup>2</sup> percent (95% confidence interval)
1997	24.7 (24.1-25.3)	24.6 (24.0-25.1)
1998	24.1 (23.5-24.7)	24.0 (23.4-24.6)
1999	23.5 (22.9-24.1)	23.3 (22.7-24.0)
2000	23.2 (22.5-23.8)	23.1 (22.5-23.7)
2001	22.7 (22.1-23.3)	22.6 (22.0-23.2)
2002	22.4 (21.7-23.0)	22.3 (21.7-22.9)
2003	21.6 (21.0-22.2)	21.5 (20.9-22.1)
2004	20.9 (20.3-21.5)	20.8 (20.2-21.4)
2005	20.9 (20.28-21.52)	20.8 (20.20-21.44)
2006	20.8 (20.14-21.51)	20.8 (20.09-21.43)
2007	19.7 (18.91-20.59)	19.7 (18.83-20.48)
2008	20.5 (19.65-21.30)	20.4 (19.59-21.21)
2009	20.6 (19.83-21.27)	20.6 (19.86-21.28)
2010	19.4 (18.76-20.10)	19.4 (18.71-20.07)
2011	18.9 (18.32-19.55)	18.9 (18.29-19.53)
January–March 2012	18.4 (17.23-19.51)	18.5 (17.33-19.59)

<sup>1</sup>Crude estimates are presented in the figure.

<sup>2</sup>Estimates for this Healthy People 2020 Leading Health Indicator are age adjusted using the projected 2000 U.S. population as the standard population and using five age groups: 18–24, 25–34, 35–44, 45–64, and 65 and over.

NOTES: Data are based on household interviews of a sample of the civilian noninstitutionalized population. Beginning with the 2003 data, the National Health Interview Survey transitioned to weights derived from the 2000 census. In this Early Release, estimates for 2000–2002 were recalculated using weights derived from the 2000 census. See [Technical Notes](#) for more details.

DATA SOURCE: CDC/NCHS, National Health Interview Survey, 1997–March 2012, Sample Adult Core component.

**Data table for Figure 8.2. Percent distribution of smoking status among adults aged 18 and over, by sex: United States, January–March 2012**

Smoking status and sex	Percent	95% confidence interval
Never, total	59.0	57.53-60.53
Never, male	53.2	50.84-55.64
Never, female	64.4	62.61-66.24
Former, total	22.6	21.32-23.89
Former, male	26.2	24.16-28.24
Former, female	19.3	17.59-20.91
Current, total	18.4	17.23-19.51
Current, male	20.6	18.81-22.31
Current, female	16.3	14.95-17.70

NOTE: Data are based on household interviews of a sample of the civilian noninstitutionalized population.

DATA SOURCE: CDC/NCHS, National Health Interview Survey, January–March 2012, Sample Adult Core component.

**Data table for Figure 8.3. Prevalence of current smoking among adults aged 18 and over, by age group and sex: United States, January–March 2012**

Age (years) and sex	Percent	95% confidence interval
18-44, total	21.3	19.52-23.07
18-44, male	24.6	21.73-27.51
18-44, female	18.0	16.11-19.95
45-64, total	18.8	16.99-20.63
45-64, male	19.6	16.95-22.22
45-64, female	18.1	15.71-20.45
65 and over, total	9.6	7.70-11.47
65 and over, male	10.4	7.29-13.52
65 and over, female	8.9	6.67-11.21
18 and over (crude <sup>1</sup> ), total	18.4	17.23-19.51
18 and over (crude <sup>1</sup> ), male	20.6	18.81-22.31
18 and over (crude <sup>1</sup> ), female	16.3	14.95-17.70
18 and over (age-adjusted <sup>2</sup> ), total	18.5	17.33-19.59
18 and over (age-adjusted <sup>2</sup> ), male	20.5	18.80-22.25
18 and over (age-adjusted <sup>2</sup> ), female	16.5	15.10-17.84

<sup>1</sup>Crude estimates are presented in the figure.

<sup>2</sup>Estimates for this Healthy People 2020 Leading Health Indicator are age adjusted using the projected 2000 U.S. population as the standard population and using five age groups: 18–24, 25–34, 35–44, 45–64, and 65 and over.

NOTE: Data are based on household interviews of a sample of the civilian noninstitutionalized population.

DATA SOURCE: CDC/NCHS, National Health Interview Survey, January–March 2012, Sample Adult Core component.

**Data table for Figure 8.4. Age-sex-adjusted prevalence of current smoking among adults aged 18 and over, by race/ethnicity: United States, January–March 2012**

Race/ethnicity	Age-sex-adjusted <sup>1</sup> percent (95% confidence interval)	Age-adjusted <sup>2</sup> percent (95% confidence interval)
Hispanic or Latino	11.4 (9.55-13.29)	11.5 (9.59-13.44)
Not Hispanic or Latino, single race, white	21.2 (19.54-22.80)	21.2 (19.54-22.81)
Not Hispanic or Latino, single race, black	17.7 (15.10-20.27)	17.4 (14.88-19.93)

<sup>1</sup>Age-sex-adjusted estimates are presented in the figure. Estimates are age-sex adjusted using the projected 2000 U.S. population as the standard population and using five age groups: 18–24, 25–34, 35–44, 45–64, and 65 and over.

<sup>2</sup>Estimates for this Healthy People 2020 Leading Health Indicator are age adjusted using the projected 2000 U.S. population as the standard population and using five age groups: 18–24, 25–34, 35–44, 45–64, and 65 and over.

NOTE: Data are based on household interviews of a sample of the civilian noninstitutionalized population.

DATA SOURCE: CDC/NCHS, National Health Interview Survey, January–March 2012, Sample Adult Core component.