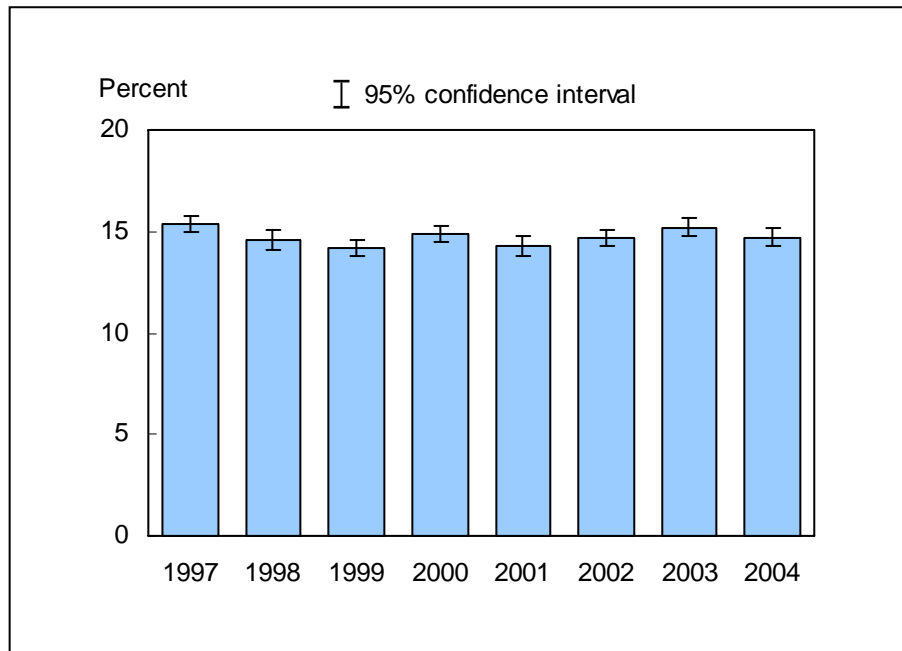


**Figure 1.1. Percent of persons of all ages without health insurance coverage: United States, 1997-2004**



NOTES: A person was defined as uninsured if he or she did not have any private health insurance, Medicare, Medicaid, State Children's Health Insurance Program (SCHIP), State-sponsored or other government-sponsored health plan, or military plan at the time of the interview. A person was also defined as uninsured if he or she had only Indian Health Service coverage or had only a private plan that paid for one type of service such as accidents or dental care. The analyses excluded persons with unknown health insurance status (about 1% of respondents each year). The data on health insurance status were edited using an automated system based on logic checks and keyword searches. For comparability, the estimates for all years were created using these same procedures. The resulting estimates of persons without health insurance coverage are generally 0.1-0.2 percentage points lower than those based on the editing procedures used for the final data files. Beginning with the 2003 data, the National Health Interview Survey transitioned to weights derived from the 2000 census. In this Early Release, estimates for 2000-02 were recalculated using weights derived from the 2000 census. See "About This Release" and table II in the Appendix for more details.

In quarter 3 of 2004, two additional questions were added to the NHIS Insurance section to reduce potential errors in reporting Medicare and Medicaid status. Persons 65 years and over not reporting Medicare coverage were asked explicitly about Medicare coverage, and persons under 65 years with no reported coverage were asked explicitly about Medicaid coverage. Depending on responses to these two questions, respondents may have been reclassified. Estimates of uninsurance for 2004 are calculated without using the additional information from these questions (noted as Method 1 in the data table) and with the responses to these questions (presented in the figure above and noted as Method 2 in the data table). See "About This Release" for additional information.

DATA SOURCE: Family Core component of the 1997-2004 National Health Interview Surveys.

- In 2004, the percentage (using Method 1) of uninsured persons was 14.7% (95% confidence interval = 14.3%-15.2%), which was not significantly lower than the 2003 estimate of 15.2%.
- The annual percentage of uninsured persons was 15.4% in 1997, 14.6% in 1998, 14.2% in 1999, and 14.9% in 2000. The estimate increased from 14.3% in 2001 to 15.2% in 2003, and then decreased (although not significantly) to 14.7% in 2004 (Method 1).

**Table 1.1. Number and percent of persons without health insurance coverage, by age group: United States, 1997-2004**

Year	All ages	Under 65 years	18-64 years	Under 18 years	All ages	Under 65 years		18-64 years	Under 18 years
						Crude	Age-adjusted		
Number in millions					Percent (95% confidence interval)				
1997	41.0	40.7	30.8	9.9	15.4 (15.0-15.8)	17.4 (16.9-17.9)	17.2 (16.8-17.7)	18.9 (18.4-19.4)	13.9 (13.2-14.6)
1998	39.3	39.0	30.0	9.1	14.6 (14.1-15.1)	16.5 (16.0-17.0)	16.4 (15.9-16.9)	18.2 (17.7-18.7)	12.7 (12.0-13.4)
1999	38.7	38.3	29.8	8.5	14.2 (13.8-14.6)	16.0 (15.5-16.5)	16.0 (15.5-16.5)	17.8 (17.3-18.3)	11.8 (11.2-12.4)
2000	41.3	40.8	32.0	8.9	14.9 (14.5-15.3)	16.8 (16.3-17.2)	16.8 (16.3-17.3)	18.7 (18.1-19.2)	12.3 (11.7-12.9)
2001	40.2	39.8	31.9	7.9	14.3 (13.8-14.8)	16.2 (15.7-16.7)	16.2 (15.7-16.7)	18.3 (17.8-18.8)	11.0 (10.3-11.7)
2002	41.5	41.1	33.5	7.6	14.7 (14.3-15.1)	16.5 (16.0-16.9)	16.6 (16.1-17.1)	19.1 (18.6-19.6)	10.5 (9.9-11.1)
2003	43.6	43.2	35.9	7.3	15.2 (14.8-15.7)	17.2 (16.6-17.7)	17.3 (16.8-17.8)	20.1 (19.5-20.6)	10.1 (9.4-10.7)
2004 (Method 1 <sup>1</sup> )	42.5	42.0	35.0	7.0	14.7 (14.3-15.2)	16.6 (16.1-17.0)	16.7 (16.3-17.2)	19.4 (18.9-19.9)	9.6 (9.0-10.2)
2004 (Method 2 <sup>1</sup> )	42.1	41.7	34.9	6.8	14.6 (14.2-15.0)	16.4 (16.0-16.9)	16.6 (16.2-17.1)	19.3 (18.8-19.8)	9.4 (8.8-10.0)

<sup>1</sup>A person was defined as uninsured if he or she did not have any private health insurance, Medicare, Medicaid, State Children's Health Insurance Program (SCHIP), State-sponsored or other government-sponsored health plan, or military plan at the time of the interview. A person was also defined as uninsured if he or she had only Indian Health Service coverage or had only a private plan that paid for one type of service such as accidents or dental care. The analyses excluded persons with unknown health insurance status (about 1% of respondents each year). The data on health insurance status were edited using an automated system based on logic checks and keyword searches. For comparability, the estimates for all years were created using these same procedures. The resulting estimates of persons without health insurance coverage are generally 0.1-0.2 percentage points lower than those based on the editing procedures used for the final data files. The number of uninsured persons was calculated as the percentage of uninsured persons multiplied by the total weighted population, including persons with unknown coverage. The age-specific numbers of uninsured may not add to their respective totals due to rounding error. Age-adjusted estimates for persons under 65 years old for this Healthy People 2010 Leading Health Indicator are adjusted to the 2000 projected U.S. standard population using three age groups: under 18 years, 18-44 years, and 45-64 years.

<sup>2</sup>In quarter 3 of 2004, two additional questions were added to the NHIS Insurance section to reduce potential errors in reporting Medicare and Medicaid status. Persons 65 years and over not reporting Medicare coverage were asked explicitly about Medicare coverage, and persons under 65 years with no reported coverage were asked explicitly about Medicaid coverage. Depending on responses to these two questions, respondents may have been reclassified. Estimates of uninsurance for 2004 are calculated without using the additional information from these questions (noted as Method 1) and with the responses to these questions (noted as Method 2). See "About This Release" for additional information.

NOTES: Beginning with the 2003 data, the National Health Interview Survey transitioned to weights derived from the 2000 census. In this Early Release, estimates for 2000-02 were recalculated using weights derived from the 2000 census. See "About This Release" and table II in the Appendix for more details.

DATA SOURCE: Family Core component of the 1997-2004 National Health Interview Surveys.

- In 2004, the percentage of uninsured persons was 16.4% (41.7 million) for persons under age 65 years, 19.3% (34.9 million) for persons aged 18-64 years, and 9.4% (6.8 million) for children under age 18 years (Method 2).

- For adults aged 18-64 years, there was an increasing trend in the percentage of

those who were uninsured from 2001 to 2003. The estimate in 2004 was not significantly lower than the estimate in 2003 (Method 1).

- For children under age 18 years, the percentage of those who were uninsured decreased from 13.9% in 1997 to 9.6% in 2004 (Method 1).

**Table 1.2. Percent of persons under age 65 years with public health plan coverage and private health insurance coverage, by age group: United States, 1997-2004**

Year	Public <sup>1</sup>			Private <sup>1</sup>		
	Under 65 years	18-64 years	Under 18 years	Under 65 years	18-64 years	Under 18 years
	Percent (95% confidence interval)					
1997	13.6 (13.1-14.1)	10.2 (9.8-10.6)	21.5 (20.5-22.4)	70.8 (70.1-71.5)	72.8 (72.2-73.4)	66.2 (65.1-67.3)
1998	12.7 (12.2-13.2)	9.5 (9.1-9.9)	20.0 (19.0-20.9)	72.0 (71.3-72.7)	73.5 (72.9-74.1)	68.5 (67.4-69.5)
1999	12.4 (12.0-12.9)	9.0 (8.6-9.3)	20.5 (19.5-21.4)	73.1 (72.3-73.8)	74.8 (74.1-75.4)	69.1 (68.0-70.2)
2000	12.9 (12.4-13.4)	9.1 (8.7-9.4)	22.0 (21.0-23.0)	71.8 (71.1-72.5)	73.8 (73.2-74.4)	67.1 (66.1-68.2)
2001	13.6 (13.1-14.1)	9.4 (9.0-9.8)	23.6 (22.6-24.5)	71.6 (70.9-72.3)	73.7 (73.1-74.4)	66.7 (66.4-68.6)
2002	15.2 (14.6-15.8)	10.3 (9.9-10.7)	27.1 (26.0-28.2)	69.8 (69.0-70.6)	72.3 (71.6-72.9)	63.9 (62.7-65.1)
2003	16.0 (15.4-16.6)	10.9 (10.4-11.4)	28.6 (27.4-29.7)	68.2 (67.5-69.0)	70.6 (69.9-71.3)	62.6 (61.4-63.8)
2004 (Method 1 <sup>2</sup> )	16.1 (15.6-16.7)	11.1 (10.6-11.5)	28.5 (27.5-29.6)	68.6 (67.9-69.4)	70.9 (70.2-71.6)	63.1 (61.9-64.3)
2004 (Method 2 <sup>2</sup> )	16.2 (15.7-16.8)	11.1 (10.7-11.6)	28.7 (27.7-29.8)	...	...	...

...Category not applicable. See footnote 2 for more information.

<sup>1</sup>The category "public health plan coverage" includes Medicare (disability), Medicaid, State Children's Health Insurance Program (SCHIP), State-sponsored or other government-sponsored health plan, and military plans. The category "private health insurance" excludes plans that paid for only one type of service such as accidents or dental care. A small number of persons were covered by both public and private plans and were included in both categories. The analyses excluded persons with unknown health insurance status (about 1% of respondents each year). The data on type of coverage were edited using an automated system based on logic checks and keyword searches. For comparability, the estimates for all years were created using these same procedures. The resulting estimates of persons having public or private coverage are within 0.1-0.3 percentage points of those based on the editing procedures used for the final data files.

<sup>2</sup>In quarter 3 of 2004, two additional questions were added to the NHIS Insurance section to reduce potential errors in reporting Medicare and Medicaid status. Persons 65 years and over not reporting Medicare coverage were asked explicitly about Medicare coverage, and persons under 65 years with no reported coverage were asked explicitly about Medicaid coverage. Depending on responses to these two questions, respondents may have been reclassified. Estimates of uninsurance for 2004 are calculated without using the additional information from these questions (noted as Method 1) and with the responses to these questions (noted as Method 2). Estimates of private insurance are not affected by the two additional questions. See "About This Release" for additional information.

NOTES: Beginning with the 2003 data, the National Health Interview Survey transitioned to weights derived from the 2000 census. In this Early Release, estimates for 2000-02 were recalculated using weights derived from the 2000 census. See "About This Release" and table II in the Appendix for more details.

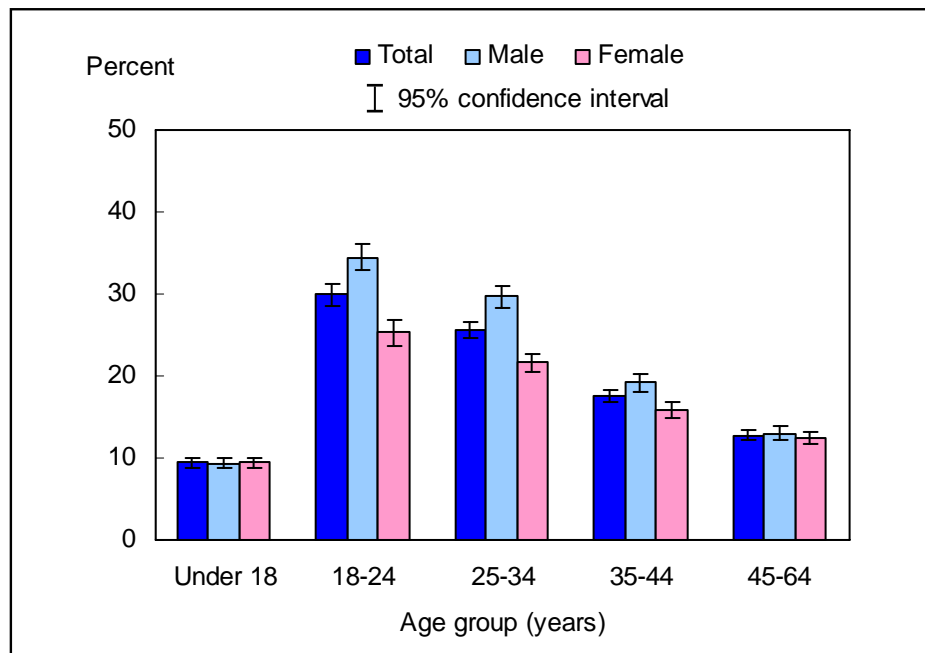
DATA SOURCE: Family Core component of the 1997-2004 National Health Interview Surveys.

- In 2004, 16.2% of persons under age 65 years were covered by public plans (Method 2), and 68.6% were covered by private health insurance plans.

- For persons aged 18-64 years, from 1999 to 2004, there was an increasing trend in public coverage (Method 1) and a decreasing trend in private coverage. The estimate for private coverage in 2004 was higher than, but not significantly different from, the estimate in 2003.

- For children under age 18 years, from 1999 to 2004, there was an increasing trend in public coverage (Method 1) and a decreasing trend in private coverage. Although the estimate for public coverage was lower, and the estimate for private coverage was higher in 2004, these estimates were not significantly different from the estimates in 2003.

**Figure 1.2. Percent of persons under age 65 years without health insurance coverage, by age group and sex: United States, 2004**



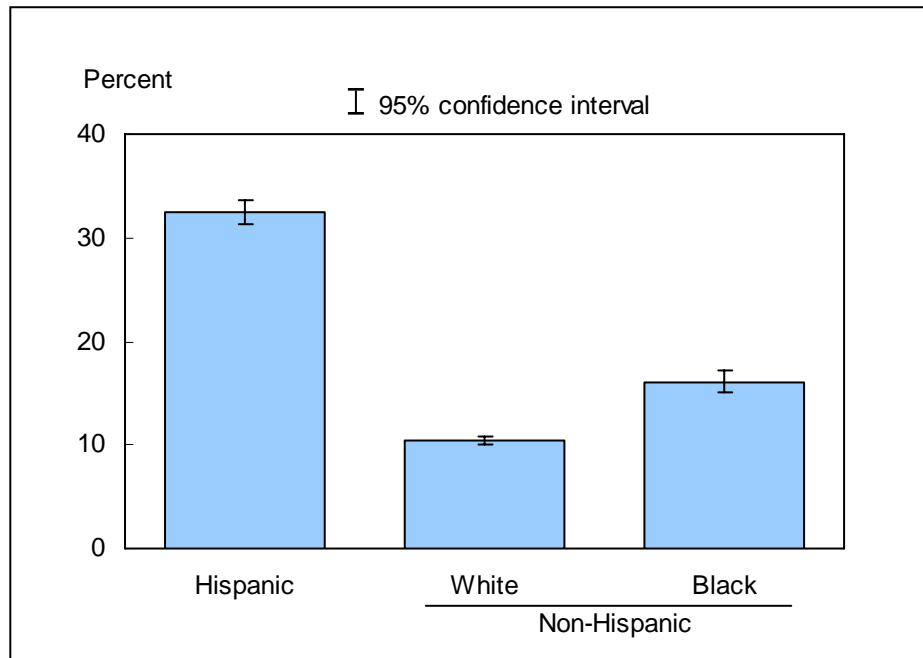
NOTES: A person was defined as uninsured if he or she did not have any private health insurance, Medicare, Medicaid, State Children's Health Insurance Program (SCHIP), State-sponsored or other government-sponsored health plan, or military plan at the time of the interview. A person was also defined as uninsured if he or she had only Indian Health Service coverage or had only a private plan that paid for one type of service such as accidents or dental care. The analyses excluded 840 persons (1.0%) with unknown health insurance status. The data on health insurance status were edited using an automated system based on logic checks and keyword searches. The resulting estimates of persons not having health insurance coverage are generally 0.1-0.2 percentage points lower than those based on the editing procedures used for the final data files.

In quarter 3 of 2004, two additional questions were added to the NHIS Insurance section to reduce potential errors in reporting Medicare and Medicaid status. Persons 65 years and over not reporting Medicare coverage were asked explicitly about Medicare coverage, and persons under 65 years with no reported coverage were asked explicitly about Medicaid coverage. Depending on responses to these two questions, respondents may have been reclassified. Estimates of uninsurance for 2004 are calculated without using the additional information from these questions (noted as Method 1 in the data table) and with the responses to these questions (presented in the figure above and noted as Method 2 in the data table). Estimates for this figure in previous Early Releases were calculated using Method 1 and are, therefore, not directly comparable to estimates in the above figure. See "About This Release" for additional information.

DATA SOURCE: Family Core component of the 2004 National Health Interview Survey.

- For both sexes combined, the percentage of those who were uninsured was highest among persons aged 18-24 years (29.9%) and lowest among persons under age 18 years (9.4%) and at ages 45-64 years (12.7%). Starting at age 18 years, younger adults were more likely than older adults to lack health insurance coverage (Method 2).
- Among adults in the age groups 18-24 years, 25-34 years, and 35-44 years, men were more likely than women to lack health insurance coverage (Method 2).

**Figure 1.3. Age- sex-adjusted percent of persons of all ages without health insurance coverage, by race/ethnicity: United States, 2004**



NOTES: A person was defined as uninsured if he or she did not have any private health insurance, Medicare, Medicaid, State Children's Health Insurance Program (SCHIP), State-sponsored or other government-sponsored health plan, or military plan at the time of the interview. A person was also defined as uninsured if he or she had only Indian Health Service coverage or had only a private plan that paid for one type of service such as accidents or dental care. The analyses excluded 916 persons (1.0%) with unknown health insurance status. The data on health insurance status were edited using an automated system based on logic checks and keyword searches. The resulting estimates of persons not having health insurance coverage are generally 0.1-0.2 percentage points lower than those based on the editing procedures used for the final data files. Estimates are age- sex-adjusted to the 2000 projected U.S. standard population using three age groups: under 18 years, 18-64 years, and 65 years and over.

In quarter 3 of 2004, two additional questions were added to the NHIS Insurance section to reduce potential errors in reporting Medicare and Medicaid status. Persons 65 years and over not reporting Medicare coverage were asked explicitly about Medicare coverage, and persons under 65 years with no reported coverage were asked explicitly about Medicaid coverage. Depending on responses to these two questions, respondents may have been reclassified. Estimates of uninsurance for 2004 are calculated without using the additional information from these questions (noted as Method 1 in the data table) and with the responses to these questions (presented in the figure above and noted as Method 2 in the data table). Estimates for this figure in previous Early Releases were calculated using Method 1 and are, therefore, not directly comparable to estimates in the above figure. See "About This Release" for additional information.

DATA SOURCE: Family Core component of the 2004 National Health Interview Survey.

■ After adjusting for age and sex, the percentage of uninsured persons was 32.5% for Hispanic persons, 10.4% for non-Hispanic white persons, and 16.1% for non-Hispanic black persons (Method 2).

■ Hispanic persons were most likely to be uninsured, followed by non-Hispanic black persons and non-Hispanic white persons (Method 2).

## Data tables for figures 1.1-1.3:

**Data table for figure 1.1. Percent of persons of all ages without health insurance coverage: United States, 1997-2004**

Year	Percent	95% confidence interval
1997	15.4	15.0-15.8
1998	14.6	14.1-15.1
1999	14.2	13.8-14.6
2000	14.9	14.5-15.3
2001	14.3	13.8-14.8
2002	14.7	14.3-15.1
2003	15.2	14.8-15.7
2004 (Method 1 <sup>1</sup> )	14.7	14.3-15.2
2004 (Method 2 <sup>1</sup> )	14.6	14.2-15.0

<sup>1</sup>In quarter 3 of 2004, two additional questions were added to the NHIS Insurance section to reduce potential errors in reporting Medicare and Medicaid status. Persons 65 years and over not reporting Medicare coverage were asked explicitly about Medicare coverage, and persons under 65 years with no reported coverage were asked explicitly about Medicaid coverage. Depending on responses to these two questions, respondents may have been reclassified. Estimates of uninsurance for 2004 are calculated without using the additional information from these questions (noted as Method 1) and with the responses to these questions (noted as Method 2). See "About This Release" for additional information.

**Data table for figure 1.2. Percent of persons under age 65 years without health insurance coverage, by age group and sex: United States, 2004**

Age and sex	Percent (95% confidence interval)	
	Method 2 <sup>1</sup>	Method 1 <sup>1</sup>
<b>Under 18 years</b>		
Total	9.4 (8.8-10.0)	9.6 (9.0-10.2)
Male	9.3 (8.7-10.0)	9.6 (8.9-10.3)
Female	9.4 (8.8-10.1)	9.6 (9.0-10.3)
<b>18-24 years</b>		
Total	29.9 (28.6-31.2)	29.9 (28.6-31.3)
Male	34.5 (32.9-36.1)	34.5 (32.9-36.1)
Female	25.3 (23.7-26.9)	25.4 (23.8-27.0)
<b>25-34 years</b>		
Total	25.6 (24.6-26.6)	25.6 (24.6-26.7)
Male	29.7 (28.3-31.0)	29.7 (28.4-31.1)
Female	21.6 (20.4-22.7)	21.6 (20.5-22.8)
<b>35-44 years</b>		
Total	17.6 (16.8-18.4)	17.6 (16.8-18.4)
Male	19.2 (18.1-20.3)	19.2 (18.2-20.3)
Female	15.9 (15.0-16.9)	16.1 (15.1-17.0)
<b>45-64 years</b>		
Total	12.7 (12.1-13.3)	12.8 (12.2-13.4)
Male	13.0 (12.3-13.8)	13.1 (12.4-13.8)
Female	12.4 (11.7-13.1)	12.5 (11.8-13.2)
<b>Under 65 years: crude<sup>2</sup></b>		
Total	16.4 (16.0-16.9)	16.6 (16.1-17.0)
Male	17.9 (17.4-18.5)	18.0 (17.5-18.6)
Female	15.0 (14.5-15.5)	15.1 (14.6-15.6)
<b>Under 65 years: age-adjusted<sup>3</sup></b>		
Total	16.6 (16.2-17.1)	16.7 (16.3-17.2)
Male	18.2 (17.6-18.7)	18.3 (17.7-18.8)
Female	15.1 (14.6-15.6)	15.2 (14.7-15.7)

In quarter 3 of 2004, two additional questions were added to the NHIS Insurance section to reduce potential errors in reporting Medicare and Medicaid status. Persons 65 years and over not reporting Medicare coverage were asked explicitly about Medicare coverage, and persons under 65 years with no reported coverage were asked explicitly about Medicaid coverage. Depending on responses to these two questions, respondents may have been reclassified. Estimates of uninsurance for 2004 are calculated without using the additional information from these questions (noted as Method 1) and with the responses to these questions (noted as Method 2). See "About This Release" for additional information.

<sup>2</sup>Crude estimates are presented in the figure.

<sup>3</sup>Estimates for this Healthy People 2010 Leading Health Indicator are for persons under 65 years and are age-adjusted to the 2000 projected U.S. standard population using three age groups: under 18 years, 18-44 years, and 45-64 years.

**Data table for figure 1.3. Adjusted percent of persons of all ages without health insurance coverage, by race/ethnicity: United States, 2004**

Race/ethnicity	Percent (95% confidence interval)			
	Age- sex-adjusted <sup>1</sup>		Age-adjusted <sup>2</sup>	
	Method 2 <sup>3</sup>	Method 1 <sup>3</sup>	Method 2 <sup>3</sup>	Method 1 <sup>3</sup>
<b>Hispanic or Latino</b>	32.5 (31.3-33.6)	32.7 (31.5-33.9)	31.6 (30.4-32.7)	31.8 (30.7-32.9)
<b>Not Hispanic or Latino:</b>				
<b>White, single race</b>	10.4 (10.0-10.8)	10.5 (10.1-10.9)	10.7 (10.3-11.1)	10.8 (10.4-11.2)
<b>Black, single race</b>	16.1 (15.1-17.2)	16.3 (15.3-17.4)	15.9 (14.9-16.9)	16.1 (15.1-17.1)

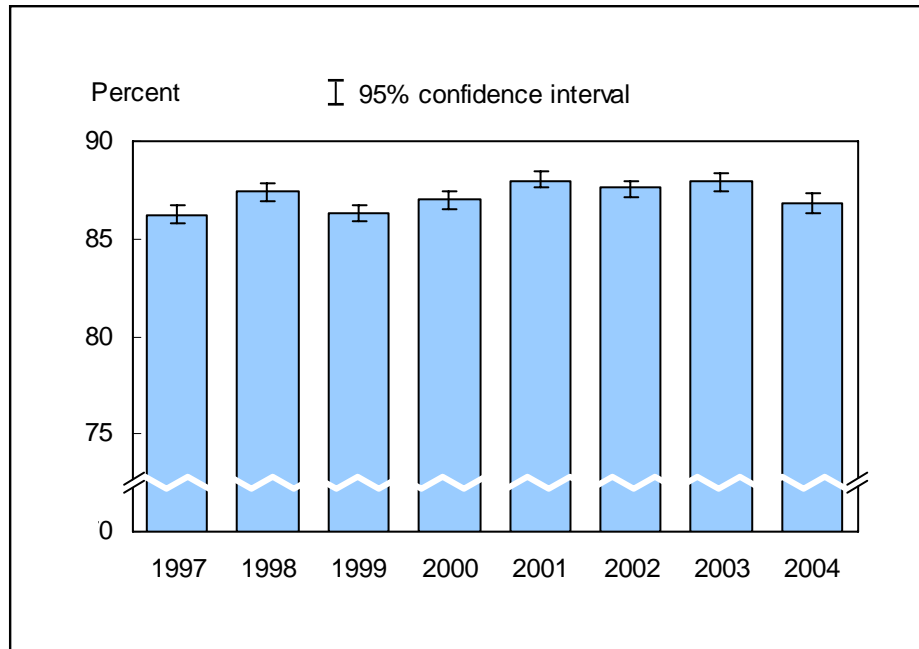
<sup>1</sup>Age- sex-adjusted estimates are presented in the figure. Estimates are for persons of all ages and are age- sex-adjusted to the 2000 projected U.S. standard population using three age groups: under 18 years, 18-64 years, and 65 years and over.

<sup>2</sup>Estimates for this Healthy People 2010 Leading Health Indicator are for persons under 65 years and are age-adjusted to the 2000 projected U.S. standard population using four age groups: under 18 years, 18-44 years, 45-64 years, and 65 years and over.

<sup>3</sup>In quarter 3 of 2004, two additional questions were added to the NHIS Insurance section to reduce potential errors in reporting Medicare and Medicaid status. Persons 65 years and over not reporting Medicare coverage were asked explicitly about Medicare coverage, and persons under 65 years with no reported coverage were asked explicitly about Medicaid coverage. Depending on responses to these two questions, respondents may have been reclassified. Estimates of uninsurance for 2004 are calculated without using the additional information from these questions (noted as Method 1) and with the responses to these questions (noted as Method 2). See "About This Release" for additional information.



**Figure 2.1. Percent of persons of all ages with a usual place to go for medical care: United States, 1997-2004**



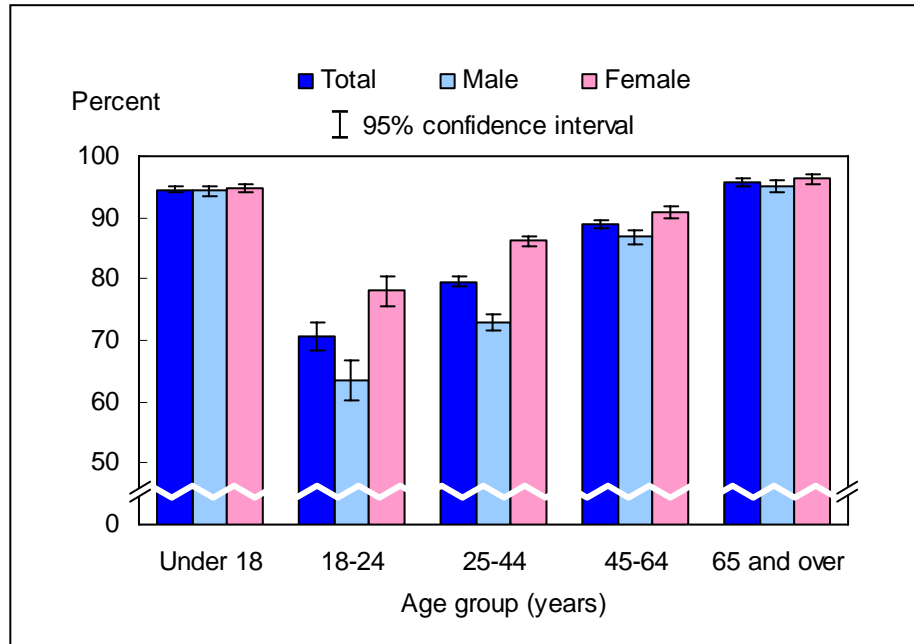
NOTES: The usual place to go for medical care does not include a hospital emergency room. The analyses excluded persons with an unknown usual place to go for medical care (about 0.6% of respondents each year). Beginning with the 2003 data, the National Health Interview Survey transitioned to weights derived from the 2000 census. In this Early Release, estimates for 2000-02 were recalculated using weights derived from the 2000 census. See "About This Release" and table III in the Appendix for more details.

DATA SOURCE: Sample Adult and Sample Child Core components of the 1997-2004 National Health Interview Surveys.

■ In 2004, the percentage of persons who had a usual place to go for medical care was 86.8% (95% confidence interval = 86.3%-87.3%), which was lower than the 2003 estimate of 87.9%.

■ The annual percentage of persons of all ages who had a usual place to go for medical care was 86.2% in 1997, 87.4% in 1998, 86.3% in 1999, 87.0% in 2000, 88.0% in 2001, 87.6% in 2002, 87.9% in 2003, and 86.8% in 2004.

**Figure 2.2. Percent of persons of all ages with a usual place to go for medical care, by age group and sex: United States, 2004**

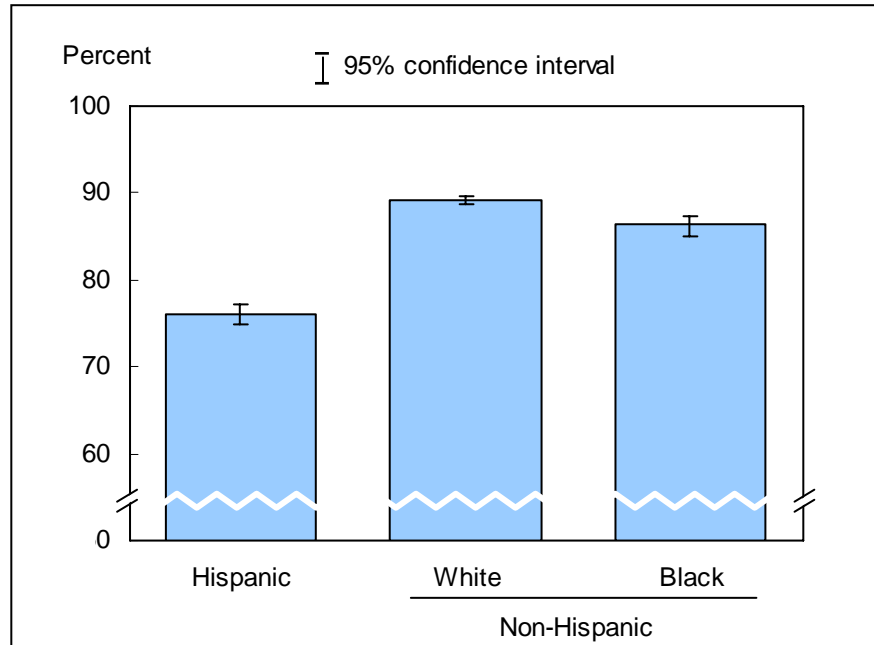


NOTES: The usual place to go for medical care does not include a hospital emergency room. The analyses excluded 212 persons (0.5%) with an unknown usual place to go for medical care.

DATA SOURCE: Sample Adult and Sample Child Core components of the 2004 National Health Interview Survey.

- Of the five age groups, persons aged 18-24 years were least likely to have a usual place to go for medical care. Children under age 18 years were more likely than adults aged 18-64 years, but less likely than adults aged 65 years and over to have a usual place to go for medical care.
- For adults aged 18-64 years, men were less likely than women to have a usual place to go for medical care.
- Among those aged 18 years and over, the percentage of persons having a usual place to go for medical care increased with age.

**Figure 2.3. Age- sex-adjusted percent of persons of all ages with a usual place to go for medical care, by race/ethnicity: United States, 2004**



NOTES: The usual place to go for medical care does not include a hospital emergency room. The analyses excluded 212 persons (0.5%) with an unknown usual place to go for medical care. Estimates are age- sex-adjusted to the 2000 projected U.S. standard population using five age groups: under 18 years, 18-24 years, 25-44 years, 45-64 years, and 65 years and over.

DATA SOURCE: Sample Adult and Sample Child Core components of the 2004 National Health Interview Survey.

- After adjusting for age and sex, the percentage of persons with a usual place to go for medical care was 76.1% for Hispanic persons, 89.2% for non-Hispanic white persons, and 86.3% for non-Hispanic black persons.
- Of the three race/ethnicity groups, Hispanic persons were least likely to have a usual place to go for medical care.

## Data tables for figures 2.1-2.3:

Data table for figure 2.1. Percent of persons of all ages with a usual place to go for medical care: United States, 1997-2004

Year	Percent (95% confidence interval)	
	Crude <sup>1</sup>	Age-adjusted <sup>2</sup>
1997	86.2 (85.8-86.7)	86.3 (85.9-86.7)
1998	87.4 (86.9-87.8)	87.4 (87.0-87.9)
1999	86.3 (85.9-86.7)	86.4 (86.0-86.8)
2000	87.0 (86.5-87.4)	87.0 (86.6-87.4)
2001	88.0 (87.6-88.5)	88.0 (87.6-88.5)
2002	87.6 (87.1-88.0)	87.6 (87.1-88.0)
2003	87.9 (87.4-88.4)	87.9 (87.4-88.4)
2004	86.8 (86.3-87.3)	86.8 (86.3-87.2)

<sup>1</sup>Crude estimates are presented in the figure.

<sup>2</sup>Estimates for this Healthy People 2010 Leading Health Indicator are age-adjusted to the 2000 projected U.S. standard population using five age groups: under 18 years, 18-24 years, 25-44 years, 45-64 years, and 65 years and over.

**Data table for figure 2.2. Percent of persons of all ages with a usual place to go for medical care, by age group and sex: United States, 2004**

Age and sex	Percent	95% confidence interval
<b>Under 18 years</b>		
Total	94.6	94.0-95.1
Male	94.3	93.5-95.0
Female	94.9	94.1-95.5
<b>18-24 years</b>		
Total	70.7	68.5-72.9
Male	63.6	60.1-66.9
Female	78.0	75.5-80.3
<b>25-44 years</b>		
Total	79.6	78.7-80.5
Male	72.9	71.5-74.3
Female	86.2	85.2-87.1
<b>45-64 years</b>		
Total	88.9	88.2-89.7
Male	86.9	85.8-88.0
Female	90.8	89.9-91.7
<b>65 years and over</b>		
Total	95.8	95.2-96.4
Male	95.1	94.0-96.0
Female	96.4	95.5-97.1
<b>All ages: crude<sup>1</sup></b>		
Total	86.8	86.3-87.3
Male	83.4	82.6-84.1
Female	90.0	89.5-90.5
<b>All ages: age-adjusted<sup>2</sup></b>		
Total	86.8	86.3-87.2
Male	83.5	82.8-84.1
Female	90.0	89.4-90.5

<sup>1</sup>Crude estimates are presented in the figure.

<sup>2</sup>Estimates for this Healthy People 2010 Leading Health Indicator are age-adjusted to the 2000 projected U.S. standard population using five age groups: under 18 years, 18-24 years, 25-44 years, 45-64 years, and 65 years and over.

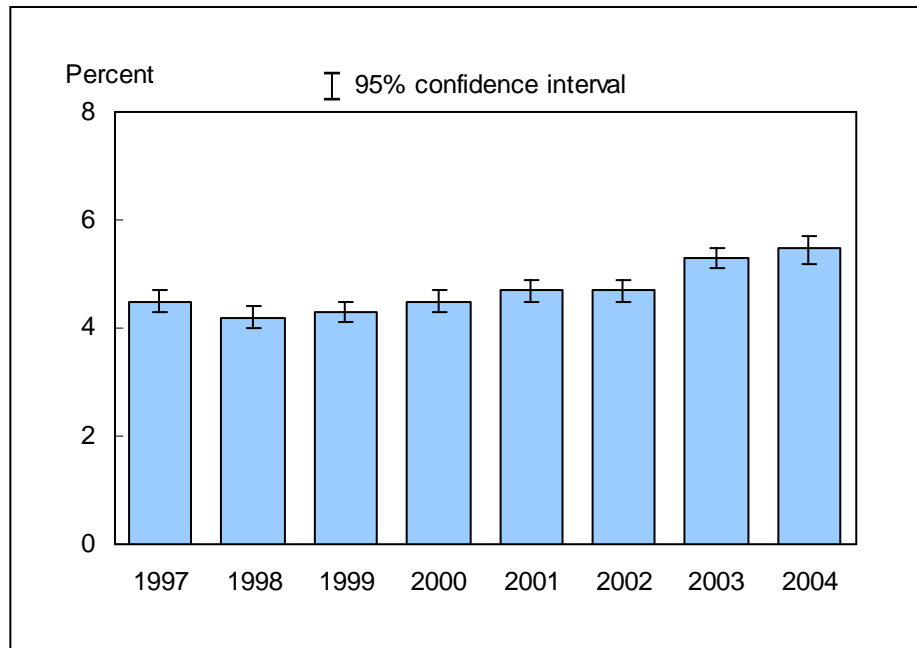
**Data table for figure 2.3. Adjusted percent of persons of all ages with a usual place to go for medical care, by race/ethnicity: United States, 2004**

Race/ethnicity	Percent (95% confidence interval)	
	Age- sex-adjusted <sup>1</sup>	Age-adjusted <sup>2</sup>
Hispanic or Latino	76.1 (74.9-77.3)	75.9 (74.7-77.0)
<b>Not Hispanic or Latino:</b>		
White, single race	89.2 (88.7-89.7)	89.2 (88.7-89.7)
Black, single race	86.3 (85.1-87.4)	86.6 (85.5-87.7)

<sup>1</sup>Age- sex-adjusted estimates are presented in the figure. Estimates are age- sex-adjusted to the 2000 projected U.S. standard population using five age groups: under 18 years, 18-24 years, 25-44 years, 45-64 years, and 65 years and over.

<sup>2</sup>Estimates for this Healthy People 2010 Leading Health Indicator are age-adjusted to the 2000 projected U.S. standard population using five age groups: under 18 years, 18-24 years, 25-44 years, 45-64 years, and 65 years and over.

**Figure 3.1. Percent of persons of all ages who failed to obtain needed medical care due to cost at some time during the past 12 months: United States, 1997-2004**



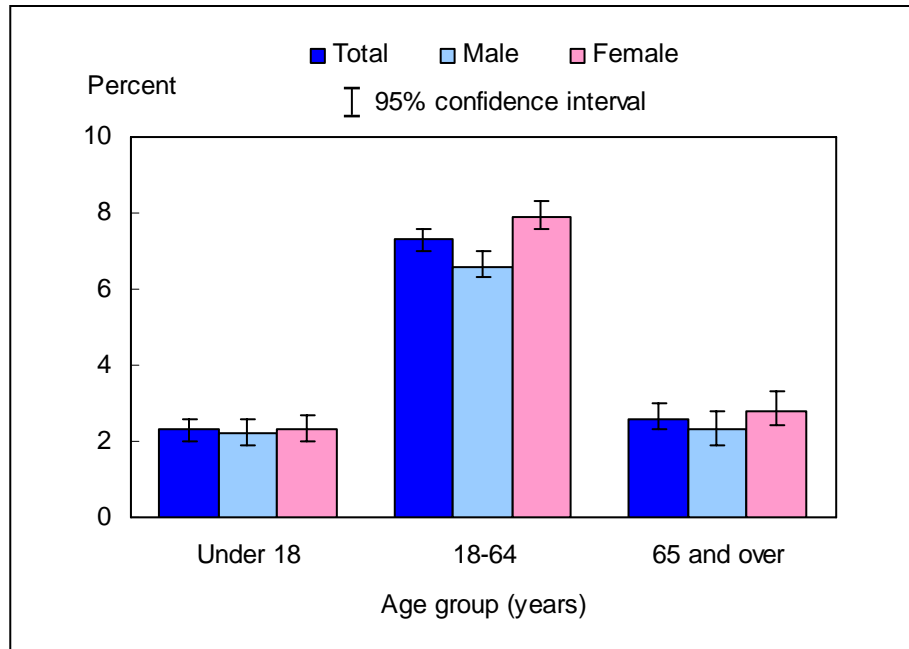
NOTES: The analyses excluded persons with unknown success in obtaining needed medical care (about 0.5% of respondents each year). Beginning with the 2003 data, the National Health Interview Survey transitioned to weights derived from the 2000 census. In this Early Release, estimates for 2000-02 were recalculated using weights derived from the 2000 census. See "About This Release" and table III in the Appendix for more details.

DATA SOURCE: Family Core component of the 1997-2004 National Health Interview Surveys.

■ In 2004, 5.5% (95% confidence interval = 5.2%-5.7%) of the population was unable to obtain needed medical care due to cost at some time during the past 12 months. The estimate is slightly higher than, but not significantly different from, the 2003 estimate of 5.3%.

■ From 1998 through 2004, an increasing trend has been observed in the percentage of persons who experienced this lack of access to medical care (4.2% in 1998 to 5.5% in 2004).

**Figure 3.2. Percent of persons of all ages who failed to obtain needed medical care due to cost at some time during the past 12 months, by age group and sex: United States, 2004**



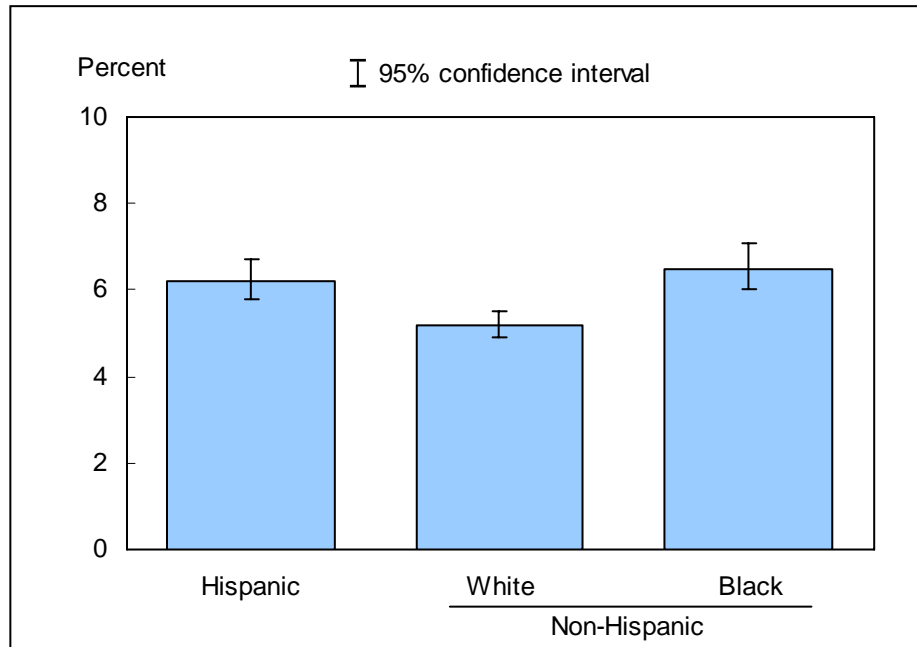
NOTE: The analyses excluded 316 persons (0.3%) with unknown success in obtaining needed medical care.

DATA SOURCE: Family Core component of the 2004 National Health Interview Survey.

■ For both sexes combined, the percentage of persons who were unable to obtain needed medical care due to cost at some time during the past 12 months was 2.3% for those aged under 18 years, 7.3% for those aged 18-64 years, and 2.6% for those aged 65 years and over.

■ For adults 18-64 years, women were more likely than men to have experienced this lack of access to medical care during the past 12 months.

**Figure 3.3. Age- sex-adjusted percent of persons of all ages who failed to obtain needed medical care due to cost at some time during the past 12 months, by race/ethnicity: United States, 2004**



NOTES: The analyses excluded 316 persons (0.3%) with unknown success in obtaining needed medical care. Estimates are age- sex-adjusted to the 2000 projected U.S. standard population using three age groups: under 18 years, 18-64 years, and 65 years and over.

DATA SOURCE: Family Core component of the 2004 National Health Interview Survey.

■ After adjusting for age and sex, 6.2% of Hispanic persons, 5.2% of non-Hispanic white persons, and 6.5% of non-Hispanic black persons were unable to obtain needed medical care due to cost at some time during the year preceding the interview.

■ Hispanic persons and non-Hispanic black persons were more likely than non-Hispanic white persons to experience this lack of access to medical care.



## Data tables for figures 3.1-3.3:

Data table for figure 3.1. Percent of persons of all ages who failed to obtain needed medical care due to cost at some time during the past 12 months: United States, 1997–2004

Year	Percent	95% confidence interval
1997	4.5	4.3-4.7
1998	4.2	4.0-4.4
1999	4.3	4.1-4.5
2000	4.5	4.3-4.7
2001	4.7	4.5-4.9
2002	4.7	4.5-4.9
2003	5.3	5.1-5.5
2004	5.5	5.2-5.7

Data table for figure 3.2. Percent of persons of all ages who failed to obtain needed medical care due to cost at some time during the past 12 months, by age group and sex: United States, 2004

Age and sex	Percent	95% confidence interval
<b>Under 18 years</b>		
Total	2.3	2.0-2.6
Male	2.2	1.9-2.6
Female	2.3	2.0-2.7
<b>18-64 years</b>		
Total	7.3	7.0-7.6
Male	6.6	6.3-7.0
Female	7.9	7.6-8.3
<b>65 years and over</b>		
Total	2.6	2.3-3.0
Male	2.3	1.9-2.8
Female	2.8	2.4-3.3
<b>All ages: crude<sup>1</sup></b>		
Total	5.5	5.2-5.7
Male	5.0	4.8-5.3
Female	5.9	5.6-6.1
<b>All ages: age-adjusted<sup>2</sup></b>		
Total	5.4	5.2-5.6
Male	5.0	4.7-5.2
Female	5.8	5.6-6.1

<sup>1</sup>Crude estimates are presented in the figure.

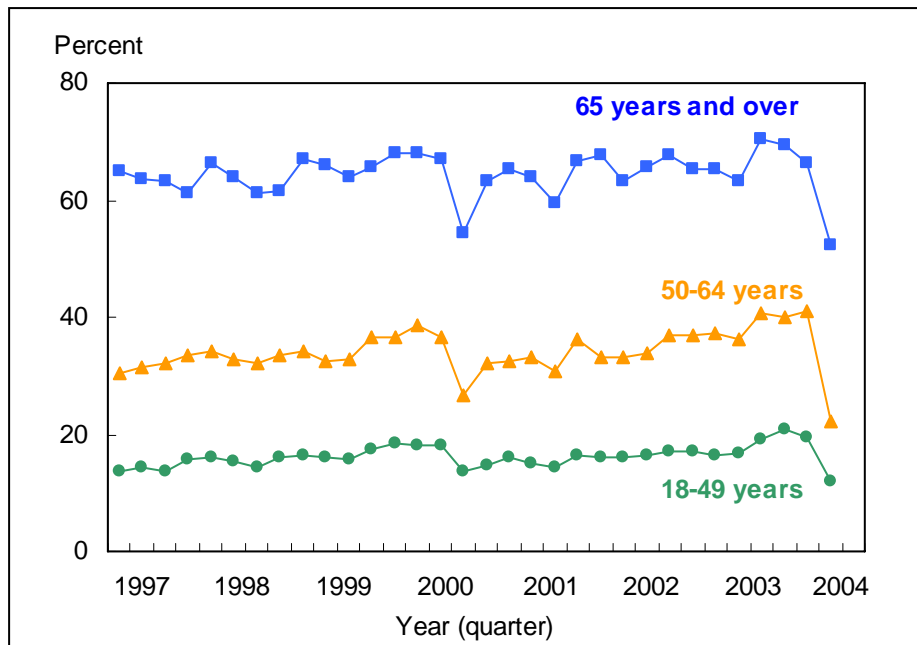
<sup>2</sup>Estimates for this Healthy People 2010 Leading Health Indicator are age-adjusted to the 2000 projected U.S. standard population using three age groups: under 18 years, 18-64 years, and 65 years and over.

**Data table for figure 3.3. Age- sex-adjusted percent of persons of all ages who failed to obtain needed medical care due to cost at some time during the past 12 months, by race/ethnicity: United States, 2004**

<b>Race/ethnicity</b>	<b>Percent<sup>1</sup></b>	<b>95% confidence interval</b>
<b>Hispanic or Latino</b>	6.2	5.8-6.7
<b>Not Hispanic or Latino:</b>		
<b>White, single race</b>	5.2	4.9-5.5
<b>Black, single race</b>	6.5	6.0-7.1

<sup>1</sup>Estimates are age- sex-adjusted to the 2000 projected U.S. standard population using three age groups: under 18 years, 18-64 years, and 65 years and over.

**Figure 4.1. Percent of adults aged 18 years and over who had received an influenza shot during the past 12 months, by age group and quarter: United States, 1997–2004**



NOTES: Respondents were asked if they had received a flu shot during the past 12 months. Responses to this question cannot be used to determine when during the preceding 12 months the subject received the flu shot. In addition, estimates are subject to recall error, which will vary depending on when the question is asked because the receipt of a flu shot is seasonal. According to the recommendations of the Advisory Committee on Immunization Practices, all adults aged 65 years and over should receive influenza vaccination. In the 2000-01 flu season (but not implemented until the 2001-02 flu season), these recommendations for influenza vaccination were expanded to include persons 50 to 64 years of age, a group formerly recommended influenza vaccination only if they had existing high-risk conditions (7). Adults aged 18-49 years are recommended to receive influenza vaccination only if they have existing high-risk conditions. The analyses excluded those with unknown flu shot status (about 1% of respondents each year). Beginning with the 2003 data, the National Health Interview Survey transitioned to weights derived from the 2000 census. In this Early Release, estimates for 2000-02 were recalculated using weights derived from the 2000 census. See "About This Release" and table III in the Appendix for more details. Beginning in September 2003, respondents were asked about influenza vaccination by nasal spray (sometimes called by the brand name FluMist™) in addition to the question regarding the flu shot. Estimates of nasal spray flu vaccination are not presented in this Early Release.

DATA SOURCE: Sample Adult Core component of the 1997-2004 National Health Interview Surveys.

■ In the fourth quarter of 2004, the percentage of adults who had received an influenza shot during the past year was 52.4% for persons aged 65 years and over, 22.3% for persons aged 50-64 years, and 12.0% for persons aged 18-49 years.

■ For all three age groups, the fourth quarter estimates in 2004 were considerably lower than the fourth quarter estimates in 2003. An influenza vaccination shortage occurred during the 2004-05 flu season (6). Previous delays in availability of the flu shots occurred in the fall of 2000 and, to a lesser extent, in the fall of 2001) (7,8).

**Table 4.1. Annual percent of adults aged 50 years and over who had received an influenza shot during the past 12 months, by age group and sex: United States, 1997-2004**

Year	50-64 years			65 years and over			
	Total	Men	Women	Total		Men	Women
				Crude	Age-adjusted		
1997	31.9 (30.5-33.3)	28.0 (26.1-29.9)	35.5 (33.6-37.4)	63.2 (61.9-64.6)	63.1 (61.7-64.4)	64.8 (62.5-67.1)	62.1 (60.5-63.7)
1998	33.1 (31.7-34.5)	29.0 (27.0-31.0)	37.0 (35.1-38.9)	63.3 (61.9-64.7)	63.3 (61.9-64.6)	63.7 (61.5-65.9)	63.0 (61.2-64.8)
1999	34.1 (32.8-35.4)	30.5 (28.6-32.4)	37.4 (35.5-39.3)	65.7 (64.3-67.2)	65.1 (63.6-66.5)	67.2 (65.0-69.4)	64.6 (62.7-66.5)
2000	34.6 (33.1-36.1)	31.9 (29.9-33.9)	37.2 (35.2-39.1)	64.4 (63.0-65.9)	64.6 (63.2-66.0)	66.0 (63.8-68.3)	63.3 (61.6-65.0)
2001	32.2 (30.9-33.5)	30.3 (28.3-32.2)	34.0 (32.2-35.8)	63.1 (61.7-64.5)	63.2 (61.8-64.6)	64.8 (62.5-67.1)	61.8 (60.1-63.5)
2002	34.0 (32.7-35.3)	30.7 (28.8-32.5)	37.2 (35.4-38.9)	65.7 (64.3-67.2)	65.9 (64.5-67.3)	67.1 (64.7-69.5)	64.7 (62.8-66.6)
2003	36.8 (35.4-38.2)	34.5 (32.6-36.3)	38.9 (37.0-40.9)	65.5 (64.1-66.9)	65.6 (64.2-66.9)	66.0 (63.9-68.1)	65.1 (63.2-67.0)
2004	35.9 (34.6-37.3)	33.3 (31.3-35.3)	38.5 (36.7-40.3)	64.6 (63.2-66.1)	64.7 (63.2-66.1)	64.1 (61.9-66.3)	65.0 (63.3-66.7)

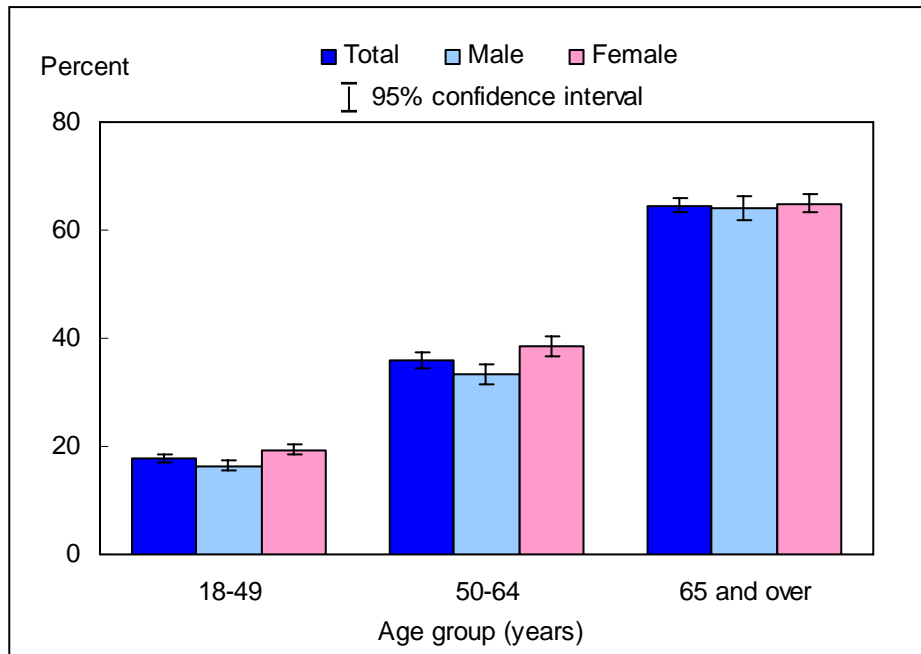
NOTES: Respondents were asked if they had received a flu shot during the past 12 months. In addition, estimates are subject to recall error, which will vary depending on when the question is asked because the receipt of a flu shot is seasonal. According to the recommendations of the Advisory Committee on Immunization Practices, all adults aged 65 years and over should receive influenza vaccination. In the 2000-01 flu season (but not implemented until the 2001-02 flu season), these recommendations for influenza vaccination were expanded to include persons 50 to 64 years of age, a group formerly recommended influenza vaccination only if they had existing high-risk conditions (7). Adults aged 18-49 years are recommended to receive influenza vaccination only if they have existing high-risk conditions. The analyses excluded those with unknown flu shot status (about 1% of respondents each year). Age-adjusted estimates for persons aged 65 years and over for this Healthy People 2010 Leading Health Indicator are based on the 2000 projected U.S. standard population using two age groups: 65-74 years and 75 years and over. Beginning with the 2003 data, the National Health Interview Survey transitioned to weights derived from the 2000 census. In this Early Release, estimates for 2000-02 were recalculated using weights derived from the 2000 census. See "About This Release" and table III in the Appendix for more details. Beginning in September 2003, respondents were asked about influenza vaccination by nasal spray (sometimes called by the brand name FluMist™) in addition to the question regarding the flu shot. Estimates of nasal spray flu vaccination are not presented in this Early Release.

DATA SOURCE: Sample Adult Core component of the 1997-2004 National Health Interview Surveys.

■ For adults aged 50-64 years, the annual percentage of persons who received a flu shot during the past 12 months was 35.9% in 2004. The estimate in 2004 was lower than, but not significantly different from, that in 2003. This pattern was seen in men and women.

■ For adults aged 65 years and over, the annual percentage of persons who received a flu shot was 64.6% in 2004. The estimate in 2004 was lower than, but not significantly different from, that in 2003. This pattern was seen in men and women.

**Figure 4.2. Percent of adults aged 18 years and over who had received an influenza shot during the past 12 months, by age group and sex: United States, 2004**

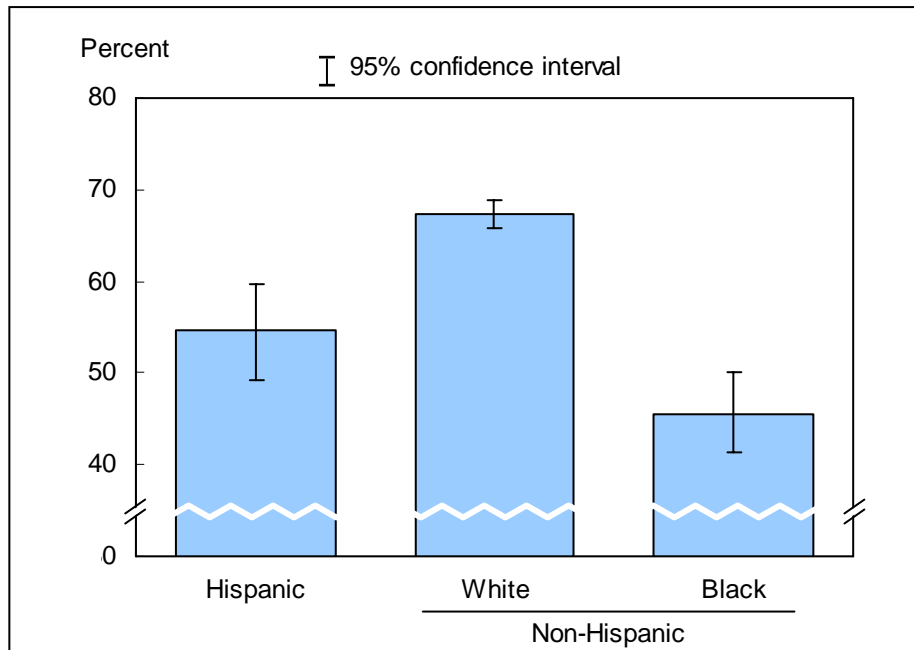


NOTES: Respondents were asked if they had received a flu shot during the past 12 months. Responses to this question cannot be used to determine when during the preceding 12 months the subject received the flu shot. In addition, estimates are subject to recall error, which will vary depending on when the question is asked because the receipt of a flu shot is seasonal. According to the recommendations of the Advisory Committee on Immunization Practices, all adults aged 65 years and over should receive influenza vaccination. In the 2000-01 flu season (but not implemented until the 2001-02 flu season), these recommendations for influenza vaccination were expanded to include persons 50 to 64 years of age, a group formerly recommended influenza vaccination only if they had existing high-risk conditions (7). Adults aged 18-49 years are recommended to receive influenza vaccination only if they have existing high-risk conditions. The analyses excluded 432 adults (1.4%) with unknown flu shot status. Beginning in September 2003, respondents were asked about influenza vaccination by nasal spray (sometimes called by the brand name FluMist™) in addition to the question regarding the flu shot. Estimates of nasal spray flu vaccination are not presented in this Early Release.

DATA SOURCE: Sample Adult Core component of the 2004 National Health Interview Survey.

- For both sexes combined, the percentage of adults who had a flu shot during the past 12 months was highest among adults aged 65 years and over (64.6%), followed by adults aged 50-64 years (35.9%) and 18-49 years (17.9%).
- For age groups 18-49 years and 50-64 years, women were more likely than men to have received a flu shot during the past 12 months.

**Figure 4.3. Percent of adults aged 65 years and over who had received an influenza shot during the past 12 months, by race/ethnicity: United States, 2004**



NOTES: Respondents were asked if they had received a flu shot during the past 12 months. Responses to this question cannot be used to determine when during the preceding 12 months the subject received the flu shot. In addition, estimates are subject to recall error, which will vary depending on when the question is asked because the receipt of a flu shot is seasonal. The analyses excluded 97 adults (1.6%) aged 65 years and over with unknown flu shot status. Beginning in September 2003, respondents were asked about influenza vaccination by nasal spray (sometimes called by the brand name FluMist™) in addition to the question regarding the flu shot. Estimates of nasal spray flu vaccination are not presented in this Early Release.

DATA SOURCE: Sample Adult Core component of the 2004 National Health Interview Survey.

- For adults aged 65 years and over, the percentage of persons receiving a flu shot during the past 12 months was 54.6% for Hispanic persons, 67.3% for non-Hispanic white persons, and 45.6% for non-Hispanic black persons.
- Hispanic persons and non-Hispanic black persons were less likely than non-Hispanic white persons to have received a flu shot during the past 12 months.

## Data tables for figures 4.1-4.3:

Data table for figure 4.1. Percent of adults aged 18 years and over who had received an influenza shot during the past 12 months, by age group and quarter: United States, 1997-2004

Year and quarter	Percent (95% confidence interval)		
	18-49 years	50-64 years	65 years and over
<b>1997</b>			
Quarter 1	13.6 (12.5-14.6)	30.5 (27.8-33.2)	65.0 (62.3-67.6)
Quarter 2	14.5 (13.4-15.5)	31.3 (28.7-34.0)	63.7 (61.1-66.2)
Quarter 3	13.6 (12.6-14.6)	32.0 (29.3-34.6)	63.1 (60.3-65.9)
Quarter 4	15.6 (14.5-16.7)	33.6 (31.1-36.2)	61.2 (58.7-63.8)
<b>1998</b>			
Quarter 1	16.1 (14.8-17.3)	34.2 (31.3-37.1)	66.3 (63.2-69.4)
Quarter 2	15.3 (14.1-16.5)	32.8 (30.1-35.5)	64.0 (61.3-66.8)
Quarter 3	14.5 (13.3-15.6)	32.0 (29.3-34.6)	61.3 (58.5-64.0)
Quarter 4	16.0 (14.8-17.2)	33.5 (30.8-36.1)	61.6 (58.7-64.5)
<b>1999</b>			
Quarter 1	16.3 (14.8-17.7)	34.2 (31.1-37.3)	67.0 (64.0-70.1)
Quarter 2	16.0 (14.7-17.3)	32.6 (29.8-35.4)	66.1 (63.4-68.8)
Quarter 3	15.8 (14.5-17.1)	32.8 (30.1-35.5)	64.1 (61.2-67.0)
Quarter 4	17.6 (16.2-18.9)	36.7 (34.2-39.2)	65.7 (62.7-68.6)
<b>2000</b>			
Quarter 1	18.6 (17.2-19.9)	36.6 (33.7-39.4)	68.2 (65.3-71.0)
Quarter 2	18.0 (16.7-19.4)	38.5 (35.7-41.4)	68.1 (65.6-70.7)
Quarter 3	18.2 (16.9-19.4)	36.6 (33.7-39.5)	67.1 (64.4-69.8)
Quarter 4	13.6 (12.4-14.8)	26.6 (24.2-29.0)	54.3 (51.6-57.1)
<b>2001</b>			
Quarter 1	14.7 (13.4-16.0)	32.3 (29.6-35.0)	63.3 (60.2-66.3)
Quarter 2	15.9 (14.7-17.1)	32.6 (30.1-35.1)	65.4 (62.8-68.0)
Quarter 3	14.9 (13.9-15.9)	33.3 (30.7-35.8)	64.0 (61.1-66.8)
Quarter 4	14.5 (13.6-15.9)	30.6 (28.0-33.1)	59.6 (56.7-62.4)
<b>2002</b>			
Quarter 1	16.4 (15.2-17.7)	36.3 (33.6-38.9)	66.6 (63.8-69.4)
Quarter 2	16.0 (14.8-17.2)	33.0 (30.5-35.5)	67.8 (65.3-70.3)
Quarter 3	16.2 (14.9-17.5)	33.1 (30.6-35.6)	63.1 (60.5-65.8)
Quarter 4	16.4 (15.1-17.8)	33.8 (31.0-36.6)	65.5 (62.4-68.6)
<b>2003</b>			
Quarter 1	17.1 (15.7-18.4)	36.8 (34.2-39.4)	67.8 (65.0-70.6)
Quarter 2	17.2 (15.8-18.6)	36.8 (33.9-39.7)	65.4 (62.6-68.3)
Quarter 3	16.4 (15.2-17.6)	37.4 (34.9-39.9)	65.4 (62.8-67.9)
Quarter 4	16.7 (15.2-18.1)	36.1 (33.3-39.0)	63.3 (60.1-66.5)
<b>2004</b>			
Quarter 1	19.3 (17.9-20.8)	40.6 (38.0-43.3)	70.3 (67.5-73.0)
Quarter 2	20.9 (19.1-22.6)	40.0 (37.1-43.0)	69.5 (66.7-72.3)
Quarter 3	19.4 (18.2-20.7)	41.0 (38.4-43.6)	66.4 (63.6-69.2)
Quarter 4	12.0 (10.9-13.1)	22.3 (20.2-24.5)	52.4 (49.5-55.4)

**Data table for figure 4.2. Percent of adults aged 18 years and over who had received an influenza shot during the past 12 months, by age group and sex: United States, 2004**

Age and sex	Percent	95% confidence interval
<b>18-49 years</b>		
Total	17.9	17.2-18.6
Male	16.4	15.4-17.4
Female	19.4	18.4-20.4
<b>50-64 years</b>		
Total	35.9	34.6-37.3
Male	33.3	31.3-35.3
Female	38.5	36.7-40.3
<b>65 years and over</b>		
Total	64.6	63.2-66.1
Male	64.1	61.9-66.3
Female	65.0	63.3-66.7
<b>18 years and over: crude<sup>1</sup></b>		
Total	29.4	28.8-30.1
Male	27.0	26.0-27.9
Female	31.7	30.9-32.6
<b>65 years and over: age-adjusted<sup>2</sup></b>		
Total	64.7	63.2-66.1
Male	64.7	62.6-66.9
Female	64.9	63.1-66.6

<sup>1</sup>Crude estimates are presented in the figure.

<sup>2</sup>Estimates for this Healthy People 2010 Leading Health Indicator are age-adjusted to the 2000 projected U.S. standard population using two age groups: 65-74 years and 75 years and over.

**Data table for figure 4.3. Percent of adults aged 65 years and over who had received an influenza shot during the past 12 months, by race/ethnicity: United States, 2004**

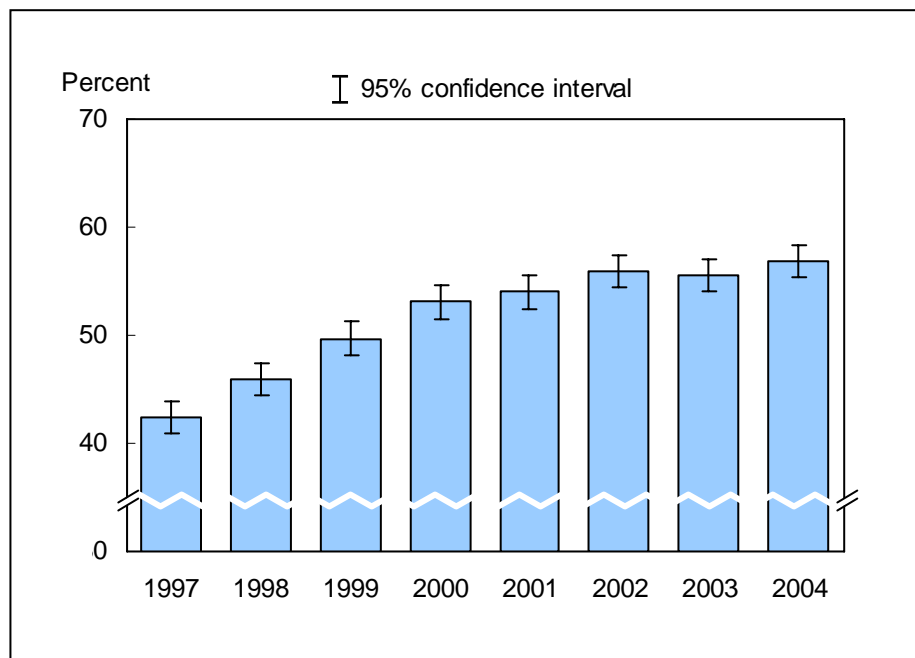
Race/ethnicity	Percent (95% confidence interval)	
	Crude <sup>1</sup>	Age-adjusted <sup>2</sup>
<b>Hispanic or Latino</b>	54.6 (49.3-59.7)	54.6 (49.2-60.0)
<b>Not Hispanic or Latino:</b>		
<b>White, single race</b>	67.3 (65.7-68.9)	67.2 (65.6-68.8)
<b>Black, single race</b>	45.6 (41.3-50.1)	46.2 (41.9-50.6)

<sup>1</sup>Crude estimates are presented in the figure.

<sup>2</sup>Estimates for this Healthy People 2010 Leading Health Indicator are age-adjusted to the 2000 projected U.S. standard population using two age groups: 65-74 years and 75 years and over.



**Figure 5.1. Percent of adults aged 65 years and over who had ever received a pneumococcal vaccination: United States, 1997-2004**



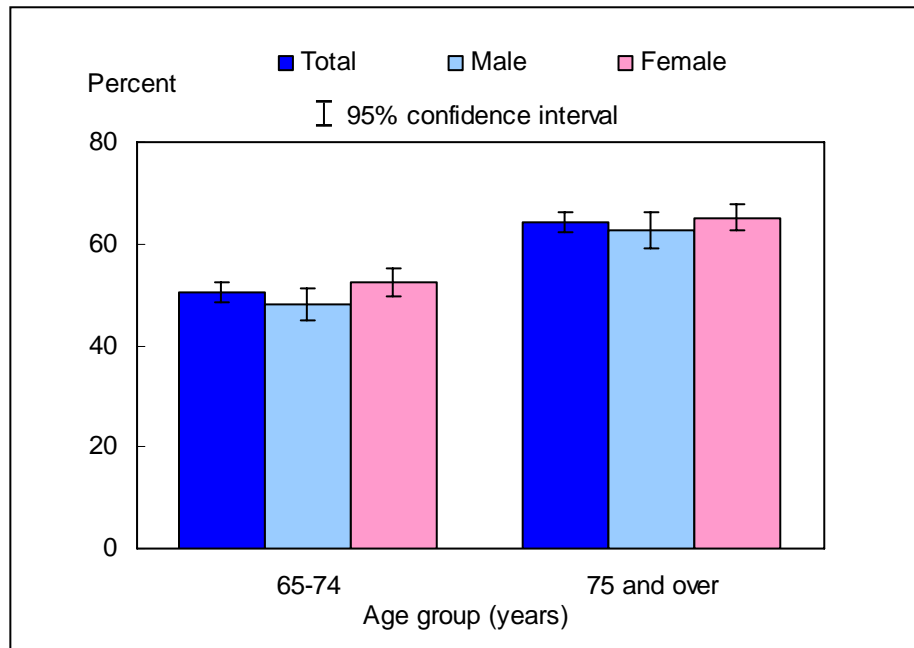
NOTES: The analyses excluded those with unknown pneumococcal vaccination status (about 3% of respondents each year). Beginning with the 2003 data, the National Health Interview Survey transitioned to weights derived from the 2000 census. In this Early Release, estimates for 2000-02 were recalculated using weights derived from the 2000 census. See "About This Release" and table III in the Appendix for more details.

DATA SOURCE: Sample Adult Core component of the 1997-2004 National Health Interview Surveys.

■ In 2004, the percentage of adults aged 65 years and over who had ever received a pneumococcal vaccination was 56.8% (95% confidence interval = 55.3%-58.3%), which was similar to the 2003 estimate of 55.6%.

■ For adults aged 65 years and over, there was an increasing trend in the percentage of those who had ever received a pneumococcal vaccination from 1997 to 2004.

**Figure 5.2. Percent of adults aged 65 years and over who had ever received a pneumococcal vaccination, by age group and sex: United States, 2004**



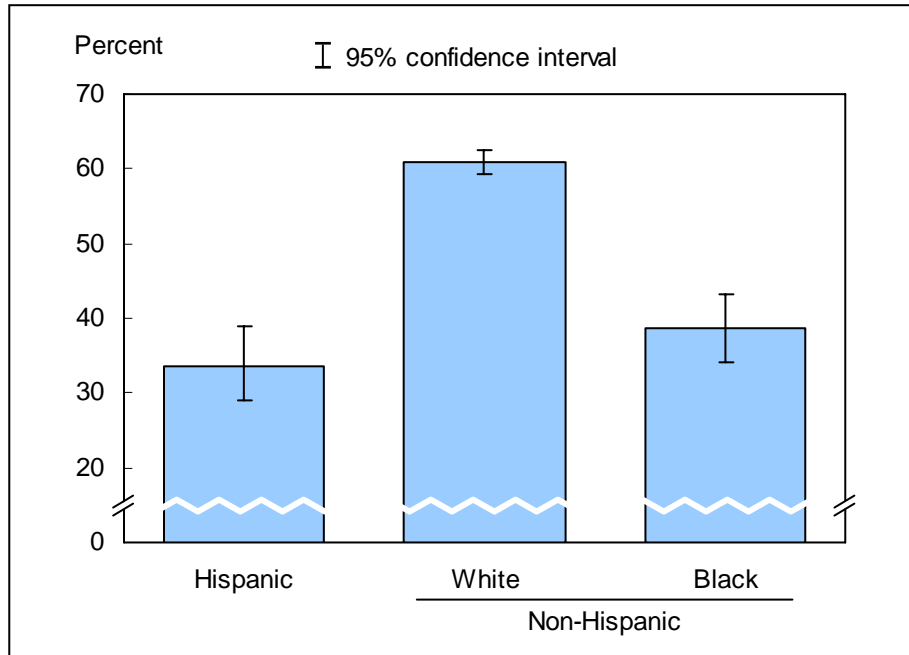
NOTES: The analyses excluded 234 adults (3.9%) aged 65 years and over with unknown pneumococcal vaccination status.

DATA SOURCE: Sample Adult Core component of the 2004 National Health Interview Survey.

■ The percentage of adults who had ever received a pneumococcal vaccination was 50.4% for persons aged 65-74 years and 64.2% for persons aged 75 years and over.

■ For adults aged 65-74 years, women were more likely than men to have ever received a pneumococcal vaccination.

**Figure 5.3. Percent of adults aged 65 years and over who had ever received a pneumococcal vaccination, by race/ethnicity: United States, 2004**



NOTE: The analyses excluded 234 adults (3.9%) aged 65 years and over with unknown pneumococcal vaccination status.

DATA SOURCE: Sample Adult Core component of the 2004 National Health Interview Survey.

■ The percentage of adults aged 65 years and over who had ever received a pneumococcal vaccination was 33.7% for Hispanic persons, 60.9% for non-Hispanic white persons, and 38.6% for non-Hispanic black persons.

■ Hispanic persons and non-Hispanic black persons were less likely than non-Hispanic white persons to have ever received a pneumococcal vaccination.

## Data tables for figures 5.1-5.3:

Data table for figure 5.1. Percent of adults aged 65 years and over who had ever received a pneumococcal vaccination: United States, 1997-2004

Year	Percent (95% confidence interval)	
	Crude <sup>1</sup>	Age-adjusted <sup>2</sup>
1997	42.4 (40.9-43.9)	42.6 (41.1-44.1)
1998	46.0 (44.5-47.5)	46.3 (44.8-47.8)
1999	49.7 (48.1-51.3)	49.9 (48.3-51.5)
2000	53.1 (51.5-54.7)	53.4 (51.8-55.0)
2001	54.0 (52.4-55.6)	54.2 (52.6-55.7)
2002	56.0 (54.5-57.5)	56.2 (54.8-57.7)
2003	55.6 (54.1-57.1)	55.7 (54.2-57.1)
2004	56.8 (55.3-58.3)	57.0 (55.5-58.5)

Crude estimates are presented in the figure.

<sup>2</sup>Estimates for this Healthy People 2010 Leading Health Indicator are age-adjusted to the 2000 projected U.S. standard population using two age groups: 65-74 years and 75 years and over.

Data table for figure 5.2. Percent of adults aged 65 years and over who had ever received a pneumococcal vaccination, by age group and sex: United States, 2004

Age and sex	Percent	95% confidence interval
<b>65-74 years</b>		
Total	50.4	48.3-52.5
Male	48.0	44.8-51.2
Female	52.4	49.6-55.2
<b>75 years and over</b>		
Total	64.2	62.1-66.3
Male	62.7	59.1-66.2
Female	65.2	62.7-67.6
<b>65 years and over: crude<sup>1</sup></b>		
Total	56.8	55.3-58.3
Male	54.3	51.7-56.8
Female	58.8	56.9-60.6
<b>65 years and over: age-adjusted<sup>2</sup></b>		
Total	57.0	55.5-58.5
Male	55.0	52.5-57.5
Female	58.5	56.6-60.4

<sup>1</sup>Crude estimates are presented in the figure.

<sup>2</sup>Estimates for this Healthy People 2010 Leading Health Indicator are age-adjusted to the 2000 projected U.S. standard population using two age groups: 65-74 years and 75 years and over.

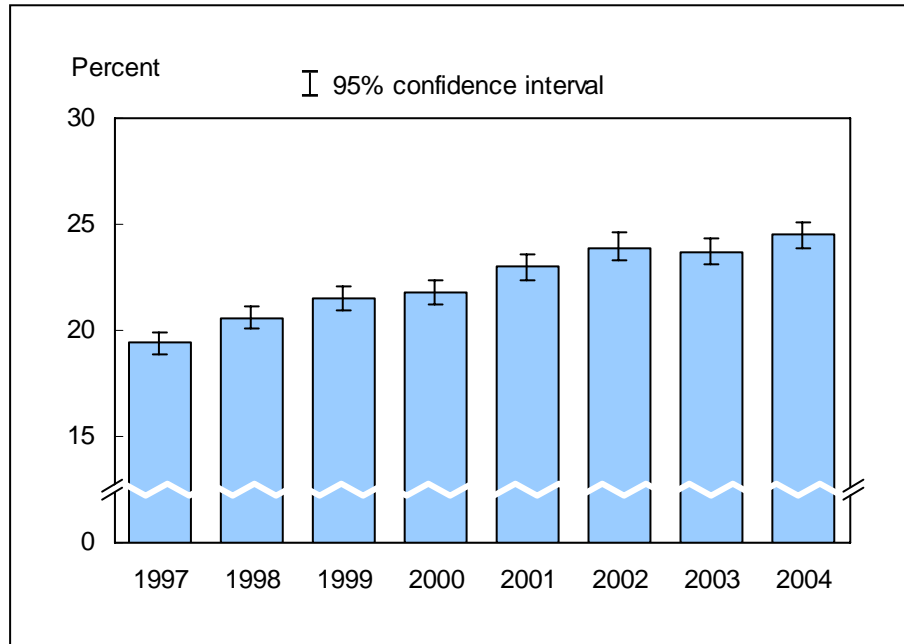
**Data table for figure 5.3. Percent of adults aged 65 years and over who had ever received a pneumococcal vaccination, by race/ethnicity: United States, 2004**

Race/ethnicity	Percent (95% confidence interval)	
	Crude <sup>1</sup>	Age-adjusted <sup>2</sup>
<b>Hispanic or Latino</b>	33.7 (29.0-38.9)	34.1 (29.1-39.4)
<b>Not Hispanic or Latino:</b>		
<b>White, single race</b>	60.9 (59.3-62.6)	60.9 (59.3-62.5)
<b>Black, single race</b>	38.6 (34.1-43.3)	39.2 (34.8-43.9)

<sup>1</sup>Crude estimates are presented in the figure.

<sup>2</sup>Estimates for this Healthy People 2010 Leading Health Indicator are age-adjusted to the 2000 projected U.S. standard population using two age groups: 65-74 years and 75 years and over.

**Figure 6.1. Prevalence of obesity among adults aged 20 years and over: United States, 1997-2004**

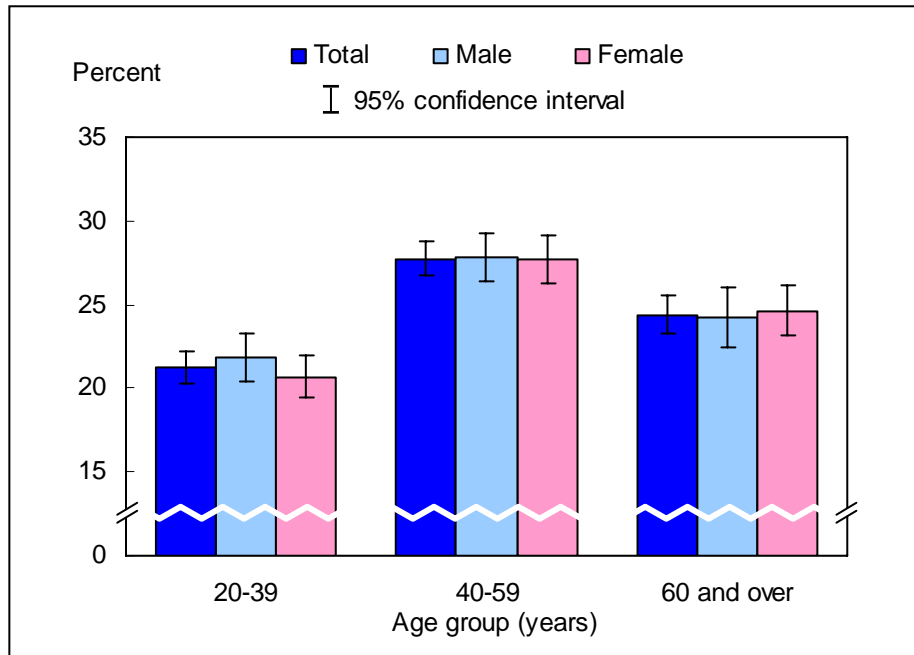


NOTES: Obesity is defined as a Body Mass Index (BMI) of 30 kg/m<sup>2</sup> or more. The measure is based on self-reported height and weight. The analyses excluded people with unknown height or weight (about 4% of respondents each year). Beginning with the 2003 data, the National Health Interview Survey transitioned to weights derived from the 2000 census. In this Early Release, estimates for 2000-02 were recalculated using weights derived from the 2000 census. See "About This Release" and table III in the Appendix for more details.

DATA SOURCE: Sample Adult Core component of the 1997-2004 National Health Interview Surveys.

- In 2004, 24.5% (95% confidence interval = 23.9%-25.1%) of U.S. adults aged 20 years and over were obese, which is similar to the 2003 estimate of 23.7%.
- The prevalence of obesity among U.S. adults aged 20 years and over has increased over time from 19.4% in 1997 to 24.5% in 2004. The estimate in 2003 was lower than, but not significantly different from, that in 2002.

**Figure 6.2. Prevalence of obesity among adults aged 20 years and over, by age group and sex: United States, 2004**



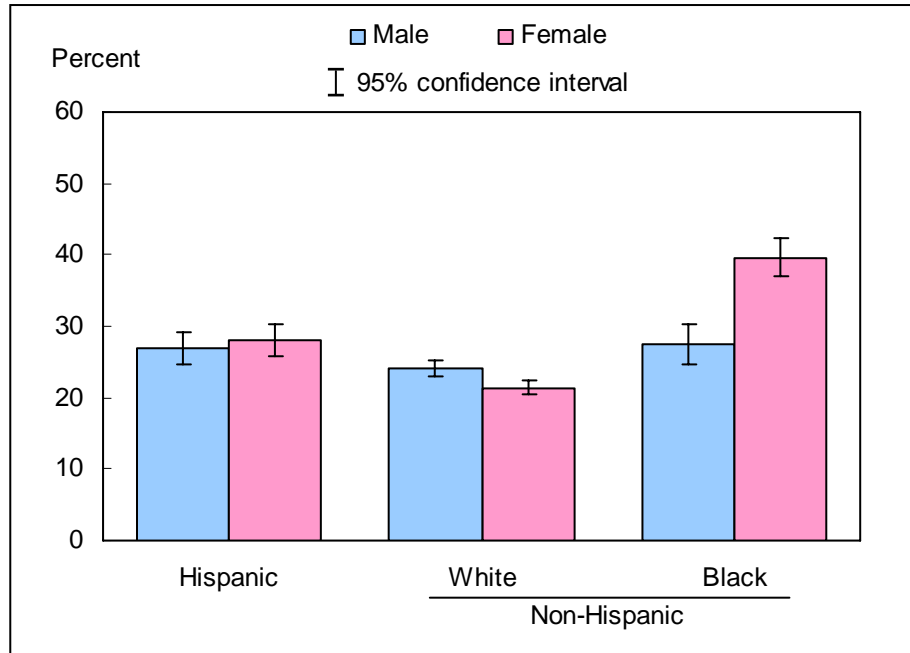
NOTES: Obesity is defined as a Body Mass Index (BMI) of 30 kg/m<sup>2</sup> or more. The measure is based on self-reported height and weight. The analyses excluded 1521 people (5.0%) with unknown height or weight.

DATA SOURCE: Sample Adult Core component of the 2004 National Health Interview Survey.

■ For both sexes combined, the prevalence of obesity was highest among adults aged 40-59 years (27.7%) and lowest among adults aged 20-39 years (21.2%). This pattern in obesity by age group was seen in both men and women.

■ There was no significant difference in the prevalence of obesity between women and men for all three age groups.

**Figure 6.3. Age-adjusted prevalence of obesity among adults aged 20 years and over, by sex and race/ethnicity: United States, 2004**



NOTES: Obesity is defined as a Body Mass Index (BMI) of 30 kg/m<sup>2</sup> or more. The measure is based on self-reported height and weight. The analyses excluded 1521 people (5.0%) with unknown height or weight. Estimates are age-adjusted to the 2000 projected U.S. standard population using five age groups: 20-24 years, 25-34 years, 35-44 years, 45-64 years, and 65 years and over.

DATA SOURCE: Sample Adult Core component of the 2004 National Health Interview Survey.

■ Non-Hispanic black women were more likely than Hispanic and non-Hispanic white women to be obese. Non-Hispanic black men were more likely than non-Hispanic white men, but not Hispanic men, to be obese.

■ Among the six sex-specific race/ethnicity groups, the age-adjusted prevalence of obesity was highest among non-Hispanic black women (39.6%).



## Data tables for figures 6.1-6.3:

**Data table for figure 6.1. Prevalence of obesity among adults aged 20 years and over: United States, 1997–2004**

Year	Percent (95% confidence interval)	
	Crude <sup>1</sup>	Age-adjusted <sup>2</sup>
1997	19.4 (18.9-19.9)	19.5 (18.9-20.0)
1998	20.6 (20.1-21.1)	20.6 (20.0-21.1)
1999	21.5 (20.9-22.1)	21.5 (20.9-22.1)
2000	21.8 (21.2-22.4)	21.8 (21.2-22.3)
2001	23.0 (22.4-23.6)	22.9 (22.3-23.5)
2002	23.9 (23.3-24.6)	23.8 (23.2-24.5)
2003	23.7 (23.1-24.3)	23.5 (22.9-24.2)
2004	24.5 (23.9-25.1)	24.3 (23.8-25.0)

<sup>1</sup>Crude estimates are presented in the figure.

<sup>2</sup>Estimates for this Healthy People 2010 Leading Health Indicator are age-adjusted to the 2000 projected U.S. standard population using seven age groups: 20-29 years, 30-39 years, 40-49 years, 50-59 years, 60-69 years, 70-79 years, and 80 years and over.

**Data table for figure 6.2. Prevalence of obesity among adults aged 20 years and over, by age group and sex: United States, 2004**

Age and sex	Percent	95% confidence interval
<b>20-39 years</b>		
Total	21.2	20.3-22.2
Male	21.8	20.4-23.3
Female	20.7	19.5-22.0
<b>40-59 years</b>		
Total	27.7	26.7-28.8
Male	27.8	26.4-29.3
Female	27.7	26.3-29.1
<b>60 years and over</b>		
Total	24.4	23.3-25.6
Male	24.2	22.4-26.0
Female	24.6	23.1-26.1
<b>20 years and over: crude<sup>1</sup></b>		
Total	24.5	23.9-25.1
Male	24.7	23.8-25.6
Female	24.3	23.4-25.1
<b>20 years and over: age-adjusted<sup>2</sup></b>		
Total	24.3	23.8-25.0
Male	24.4	23.5-25.3
Female	24.3	23.4-25.2

<sup>1</sup>Crude estimates are presented in the figure.

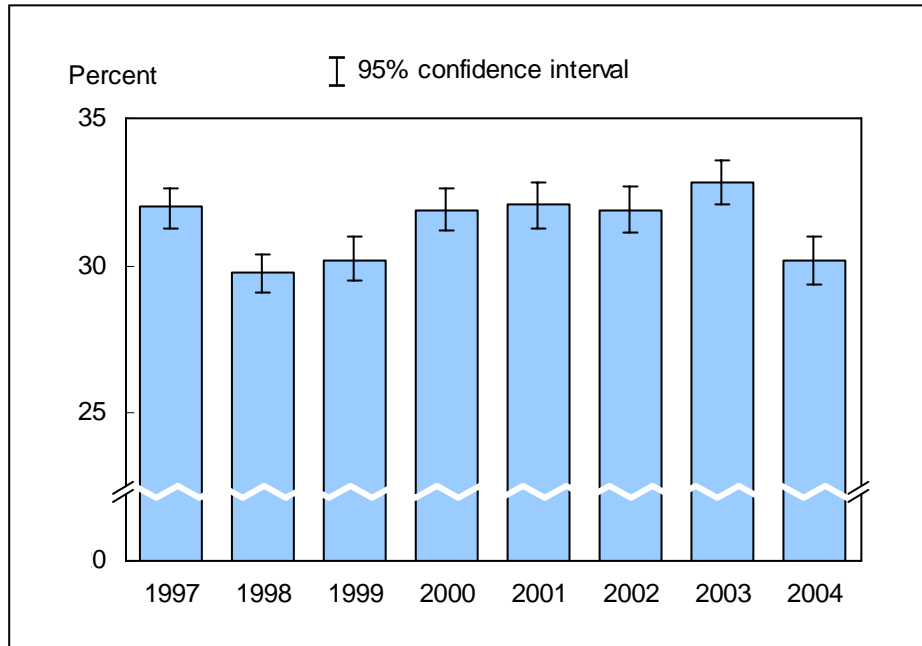
<sup>2</sup>Estimates for this Healthy People 2010 Leading Health Indicator are age-adjusted to the 2000 projected U.S. standard population using seven age groups: 20-29 years, 30-39 years, 40-49 years, 50-59 years, 60-69 years, 70-79 years, and 80 years and over.

**Data table for figure 6.3. Age-adjusted prevalence of obesity among adults aged 20 years and over, by sex and race/ethnicity: United States, 2004**

<b>Sex and race/ethnicity</b>	<b>Percent<sup>1</sup></b>	<b>95% confidence interval</b>
<b>Male</b>		
Hispanic or Latino	26.9	24.8-29.1
Not Hispanic or Latino:		
White, single race	24.1	23.0-25.1
Black, single race	27.4	24.6-30.3
<b>Female</b>		
Hispanic or Latino	28.0	25.7-30.4
Not Hispanic or Latino:		
White, single race	21.3	20.4-22.4
Black, single race	39.6	37.0-42.2

<sup>1</sup>Estimates for this Healthy People 2010 Leading Health Indicator are age-adjusted to the 2000 projected U.S. standard population using five age groups: 20-24 years, 25-34 years, 35-44 years, 45-64 years, and 65 years and over.

**Figure 7.1. Percent of adults aged 18 years and over who engaged in regular leisure-time physical activity: United States, 1997-2004**



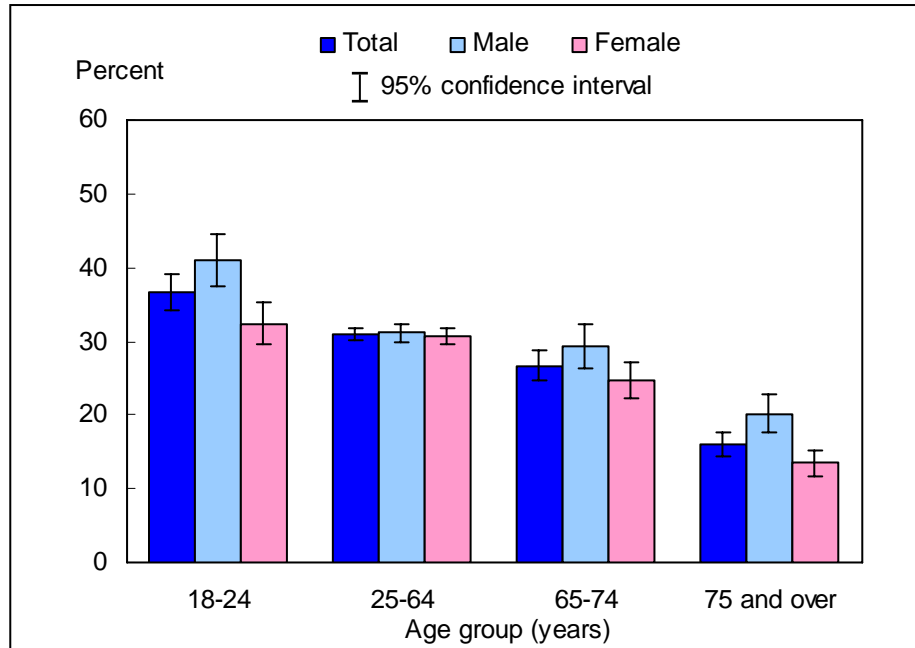
NOTES: This measure reflects the definition used for the physical activity Leading Health Indicator (Healthy People 2010). Regular leisure-time physical activity is defined as engaging in light-moderate leisure-time physical activity for greater than or equal to 30 minutes at a frequency greater than or equal to five times per week or engaging in vigorous leisure-time physical activity for greater than or equal to 20 minutes at a frequency greater than or equal to three times per week. The analyses excluded persons with unknown physical activity participation (about 3% of respondents each year). In previous Early Releases, regular physical activity was calculated slightly differently than that of Healthy People 2010. The earlier ER estimates excluded from the analysis persons with unknown duration who were known to have not met the frequency recommendations (i.e. partial unknowns). With the current release, persons who were known to have not met the frequency recommendations are classified as "not regular," regardless of duration. All estimates have been rerun using the revised denominator. The impact of the change on the estimates was minimal (typically 0.1 or less). Beginning with the 2003 data, the National Health Interview Survey transitioned to weights derived from the 2000 census. In this Early Release, estimates for 2000-02 were recalculated using weights derived from the 2000 census. See "About This Release" and table III in the Appendix for more details.

DATA SOURCE: Sample Adult Core component of the 1997-2004 National Health Interview Surveys.

■ In 2004, 30.2% (95% confidence interval = 29.4%-31.0%) of U.S. adults aged 18 years and over engaged in regular leisure-time physical activity. This estimate was lower than the 2003 estimate of 32.8%.

■ The annual percentages of adults aged 18 years and over who engaged in regular leisure-time physical activity increased from 29.9% in 1998 to 31.9% in 2000, did not change significantly from 2000 to 2003, and decreased from 2003 to 2004.

**Figure 7.2. Percent of adults aged 18 years and over who engaged in regular leisure-time physical activity, by age group and sex: United States, 2004**

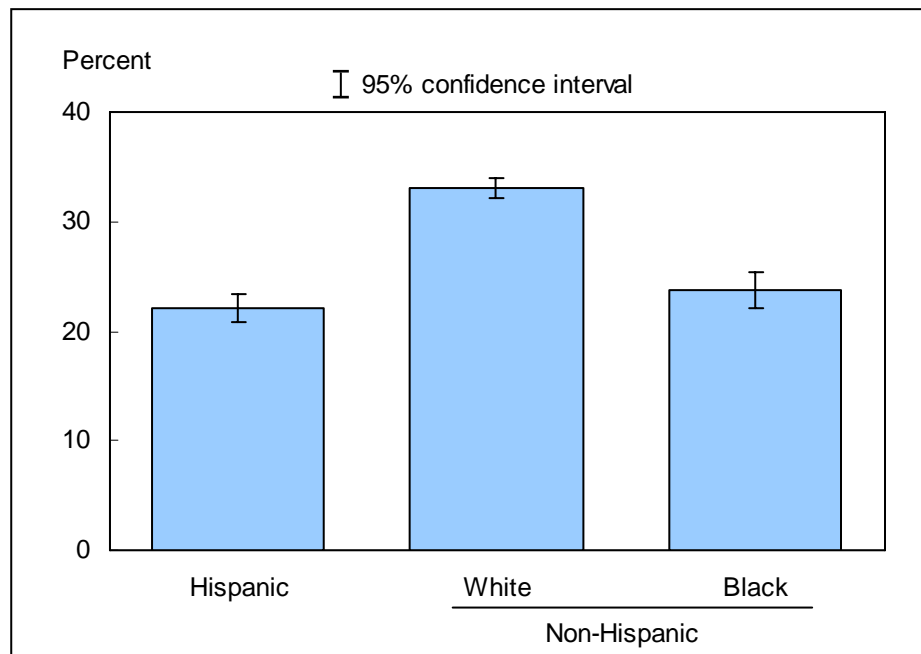


NOTES: This measure reflects the definition used for the physical activity Leading Health Indicator (Healthy People 2010). Regular leisure-time physical activity is defined as engaging in light-moderate leisure-time physical activity for greater than or equal to 30 minutes at a frequency greater than or equal to five times per week or engaging in vigorous leisure-time physical activity for greater than or equal to 20 minutes at a frequency greater than or equal to three times per week. The analyses excluded persons with unknown physical activity participation (about 3% of respondents each year). In previous Early Releases, regular physical activity was calculated slightly differently than that of Healthy People 2010. The earlier ER estimates excluded from the analysis persons with unknown duration who were known to have not met the frequency recommendations (i.e. partial unknowns). With the current release, persons who were known to have not met the frequency recommendations are classified as "not regular," regardless of duration. The analyses excluded 783 persons (2.5%) with unknown physical activity participation.

DATA SOURCE: Sample Adult Core component of the 2004 National Health Interview Survey.

- For both sexes combined, the percentage of adults who engaged in regular leisure-time physical activity decreased with age.
- For age groups 18-24 years, 65-74 years, and 75 years and over, women were less likely than men to engage in regular leisure-time physical activity.

**Figure 7.3. Age- sex-adjusted percent of adults aged 18 years and over who engaged in regular leisure-time physical activity, by race/ethnicity: United States, 2004**



NOTES: This measure reflects the definition used for the physical activity Leading Health Indicator (Healthy People 2010). Regular leisure-time physical activity is defined as engaging in light-moderate leisure-time physical activity for greater than or equal to 30 minutes at a frequency greater than or equal to five times per week or engaging in vigorous leisure-time physical activity for greater than or equal to 20 minutes at a frequency greater than or equal to three times per week. The analyses excluded persons with unknown physical activity participation (about 3% of respondents each year). In previous Early Releases, regular physical activity was calculated slightly differently than that of Healthy People 2010. The earlier ER estimates excluded from the analysis persons with unknown duration who were known to have not met the frequency recommendations (i.e. partial unknowns). With the current release, persons who were known to have not met the frequency recommendations are classified as "not regular," regardless of duration. The analyses excluded 783 persons (2.5%) with unknown physical activity participation.

DATA SOURCE: Sample Adult Core component of the 2004 National Health Interview Survey.

■ The age- sex-adjusted percentage of adults who engaged in regular leisure-time physical activity was 22.1% for Hispanic adults, 33.0% for non-Hispanic white adults, and 23.7% for non-Hispanic black adults.

■ Non-Hispanic white adults were more likely to engage in regular leisure-time physical activity than Hispanic adults and non-Hispanic black adults.

## Data tables for figures 7.1-7.3:

Data table for figure 7.1. Percent of adults aged 18 years and over who engaged in regular leisure-time physical activity: United States, 1997–2004

Year	Percent (95% confidence interval)	
	Crude <sup>1</sup>	Age-adjusted <sup>2</sup>
1997	32.0 (31.3-32.6)	31.8 (31.1-32.5)
1998	29.8 (29.1-30.4)	29.6 (28.9-30.3)
1999	30.2 (29.5-31.0)	30.1 (29.4-30.8)
2000	31.9 (31.2-32.6)	31.8 (31.1-32.5)
2001	32.1 (31.3-32.8)	31.9 (31.2-32.7)
2002	31.9 (31.1-32.7)	31.8 (31.0-32.6)
2003	32.8 (32.1-33.6)	32.8 (32.0-33.6)
2004	30.2 (29.4-31.0)	30.1 (29.4-30.9)

<sup>1</sup>Crude estimates are presented in the figure.

<sup>2</sup>Estimates for this Healthy People 2010 Leading Health Indicator are age-adjusted to the 2000 projected U.S. standard population using five age groups: 18-24 years, 25-34 years, 35-44 years, 45-64 years, and 65 years and over.

**Data table for figure 7.2. Percent of adults aged 18 and over who engaged in regular leisure-time physical activity, by age group and sex: United States, 2004**

<b>Age and sex</b>	<b>Percent</b>	<b>95% confidence interval</b>
<b>18-24 years</b>		
Total	36.6	34.3-39.0
Male	41.0	37.6-44.5
Female	32.3	29.5-35.2
<b>25-64 years</b>		
Total	30.9	30.1-31.8
Male	31.1	30.0-32.3
Female	30.7	29.6-31.9
<b>65-74 years</b>		
Total	26.7	24.7-28.7
Male	29.2	26.3-32.3
Female	24.6	22.3-27.1
<b>75 years and over</b>		
Total	16.0	14.5-17.7
Male	20.1	17.6-22.9
Female	13.5	11.8-15.3
<b>18 years and over: crude<sup>1</sup></b>		
Total	30.2	29.4-31.0
Male	31.6	30.6-32.7
Female	28.8	27.9-29.8
<b>18 years and over: age-adjusted<sup>2</sup></b>		
Total	30.1	29.4-30.9
Male	31.4	30.4-32.4
Female	29.0	28.0-30.0

<sup>1</sup>Crude estimates are presented in the figure.

<sup>2</sup>Estimates for this Healthy People 2010 Leading Health Indicator are age-adjusted to the 2000 projected U.S. standard population using five age groups: 18-24 years, 25-34 years, 35-44 years, 45-64 years, and 65 years and over.

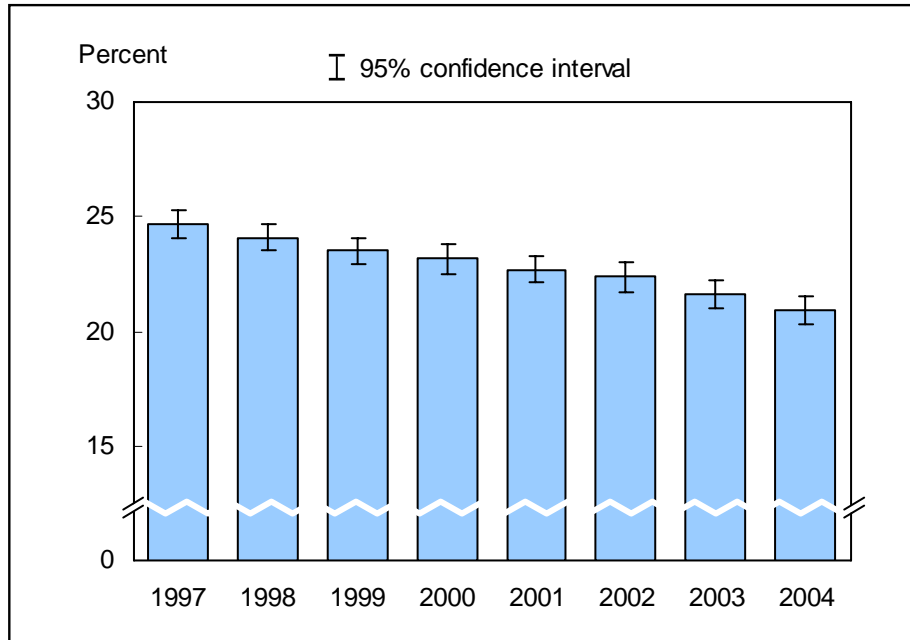
**Data table for figure 7.3. Adjusted percent of adults aged 18 years and over who engaged in regular leisure-time physical activity, by race/ethnicity: United States, 2004**

<b>Race/ethnicity</b>	<b>Percent (95% confidence interval)</b>	
	<b>Age- sex-adjusted<sup>1</sup></b>	<b>Age-adjusted<sup>2</sup></b>
<b>Hispanic or Latino</b>	22.1 (20.8-23.4)	22.1 (20.8-23.5)
<b>Not Hispanic or Latino:</b>		
<b>White, single race</b>	33.0 (32.1-34.0)	33.0 (32.1-34.0)
<b>Black, single race</b>	23.7 (22.1-25.4)	23.3 (21.7-25.0)

<sup>1</sup>Age- sex-adjusted estimates are presented in the figure. Estimates are age- sex-adjusted to the 2000 projected U.S. standard population using five age groups: 18-24 years, 25-34 years, 35-44 years, 45-64 years, and 65 years and over.

<sup>2</sup>Estimates for this Healthy People 2010 Leading Health Indicator are age-adjusted to the 2000 projected U.S. standard population using five age groups: 18-24 years, 25-34 years, 35-44 years, 45-64 years, and 65 years and over.

**Figure 8.1. Prevalence of current smoking among adults aged 18 years and over: United States, 1997-2004**



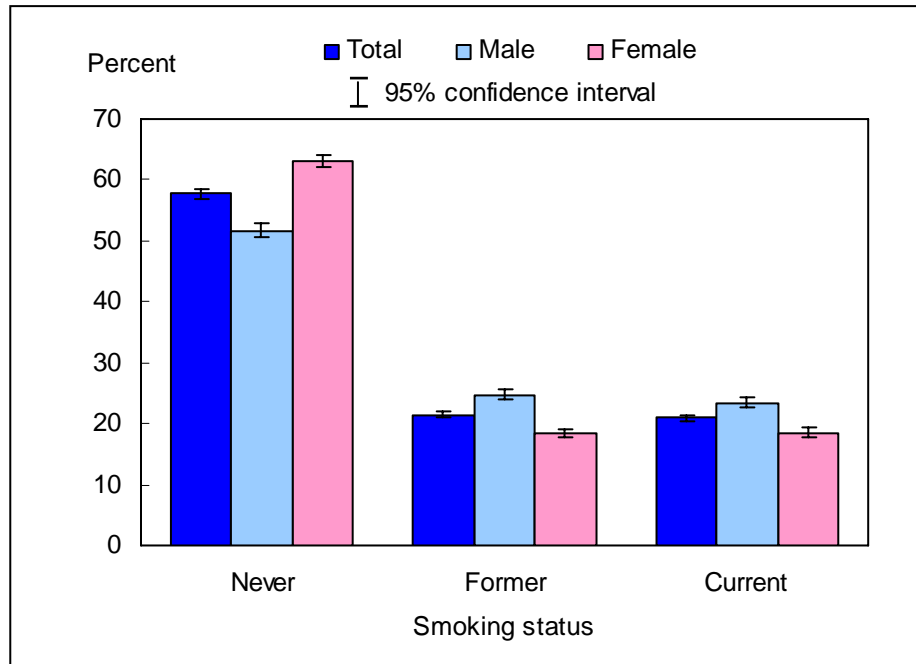
NOTES: Current smokers were defined as those who smoked more than 100 cigarettes in their lifetime and now smoke every day or some days. The analyses excluded persons with unknown smoking status (about 1% of respondents each year). Beginning with the 2003 data, the National Health Interview Survey transitioned to weights derived from the 2000 census. In this Early Release, estimates for 2000-02 were recalculated using weights derived from the 2000 census. See "About This Release" and table III in the Appendix for more details.

DATA SOURCE: Sample Adult Core component of the 1997-2004 National Health Interview Surveys.

- In 2004, 20.9% (95% confidence interval = 20.3%-21.5%) of adults aged 18 years and over were current smokers, continuing a decline in the prevalence of current smoking among adults in the United States.
- The prevalence of current smoking among U.S. adults has declined over time from 24.7% in 1997 to 20.9% in 2004.



**Figure 8.2. Percent distribution of smoking status among adults aged 18 years and over, by sex: United States, 2004**



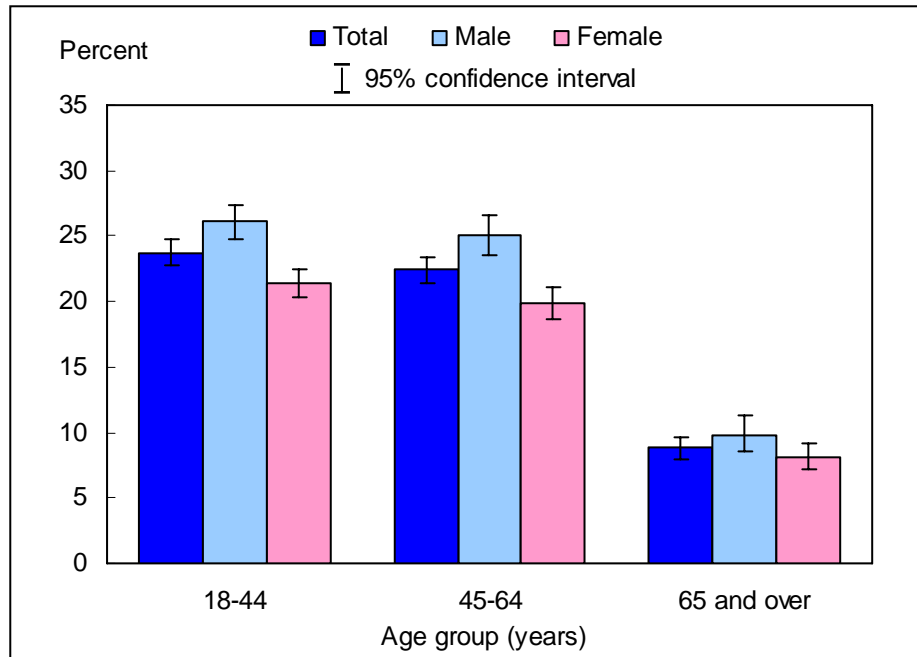
NOTES: Current smokers were defined as those who smoked more than 100 cigarettes in their lifetime and now smoke every day or some days. The analyses excluded 331 persons (1.1%) with unknown smoking status.

DATA SOURCE: Sample Adult Core component of the 2004 National Health Interview Survey.

■ The percentage of current smokers was higher for men (23.4%) than for women (18.5%).

■ The percentage of former smokers was higher for men than for women, and the percentage of those who had never smoked was higher for women than for men.

**Figure 8.3. Prevalence of current smoking among adults aged 18 years and over, by age group and sex: United States, 2004**

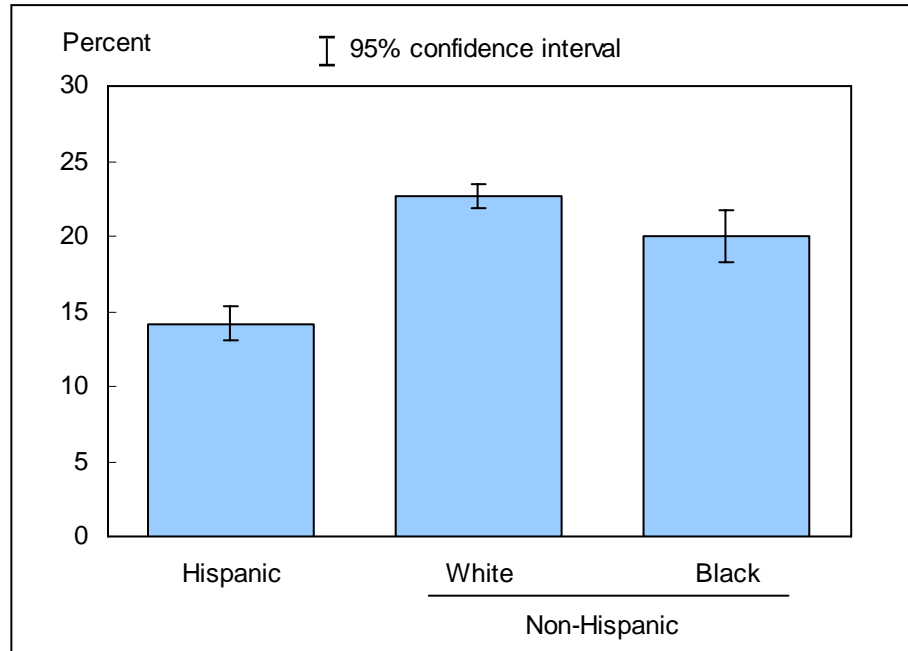


NOTES: Current smokers were defined as those who smoked more than 100 cigarettes in their lifetime and now smoke every day or some days. The analyses excluded 331 persons (1.1%) with unknown smoking status.

DATA SOURCE: Sample Adult Core component of the 2004 National Health Interview Survey.

- For both sexes combined, the percentage of adults who were current smokers was lower among adults aged 65 years and over (8.8%) than among adults aged 18-44 years (23.7%) and 45-64 years (22.4%). This pattern in current smoking by age group was seen in both men and women.
- For all three age groups, men were more likely than women to be current smokers.

**Figure 8.4. Age- sex-adjusted prevalence of current smoking among adults aged 18 years and over, by race/ethnicity: United States, 2004**



NOTES: Current smokers were defined as those who smoked more than 100 cigarettes in their lifetime and now smoke every day or some days. The analyses excluded 331 persons (1.1%) with unknown smoking status. Estimates are age- sex-adjusted to the 2000 projected U.S. standard population using five age groups: 18-24 years, 25-34 years, 35-44 years, 45-64 years, and 65 years and over.

DATA SOURCE: Sample Adult Core component of the 2004 National Health Interview Survey.

- The age- sex-adjusted prevalence of current smoking was 14.2% for Hispanic persons, 22.7% for non-Hispanic white persons, and 20.0% for non-Hispanic black persons.
- Non-Hispanic white adults and non-Hispanic black adults were more likely than Hispanic adults to be current smokers.

## Data tables for figures 8.1-8.4:

**Data table for figure 8.1. Prevalence of current smoking among adults aged 18 years and over: United States, 1997-2004**

Year	Percent (95% confidence interval)	
	Crude <sup>1</sup>	Age-adjusted <sup>2</sup>
1997	24.7 (24.1-25.3)	24.6 (24.0-25.1)
1998	24.1 (23.5-24.7)	24.0 (23.1-24.8)
1999	23.5 (22.9-24.1)	23.3 (22.7-24.0)
2000	23.2 (22.5-23.8)	23.1 (22.5-23.7)
2001	22.7 (22.1-23.3)	22.6 (22.0-23.2)
2002	22.4 (21.7-23.0)	22.3 (21.7-22.9)
2003	21.6 (21.0-22.2)	21.5 (20.9-22.1)
2004	20.9 (20.3-21.5)	20.8 (20.2-21.4)

<sup>1</sup>Crude estimates are presented in the figure.

<sup>2</sup>Estimates for this Healthy People 2010 Leading Health Indicator are age-adjusted to the 2000 projected U.S. standard population using five age groups: 18-24 years, 25-34 years, 35-44 years, 45-64 years, and 65 years and over.

**Data table for figure 8.2. Percent distribution of smoking status among adults aged 18 years and over, by sex: United States, 2004**

Smoking status and sex	Percent	95% confidence interval
<b>Never</b>		
Total	57.7	56.9-58.4
Male	51.7	50.7-52.8
Female	63.2	62.2-64.1
<b>Former</b>		
Total	21.4	20.9-22.0
Male	24.8	24.0-25.7
Female	18.3	17.6-19.0
<b>Current</b>		
Total	20.9	20.3-21.5
Male	23.4	22.6-24.3
Female	18.5	17.8-19.3

**Data table for figure 8.3. Prevalence of current smoking among adults aged 18 years and over, by age group and sex: United States, 2004**

Age and sex	Percent	95% confidence interval
<b>18-44 years</b>		
Total	23.7	22.8-24.7
Male	26.1	24.8-27.4
Female	21.4	20.3-22.5
<b>45-64 years</b>		
Total	22.4	21.4-23.4
Male	25.0	23.5-26.6
Female	19.8	18.7-21.1
<b>65 years and over</b>		
Total	8.8	8.0-9.7
Male	9.8	8.5-11.3
Female	8.1	7.2-9.1
<b>18 years and over: crude<sup>1</sup></b>		
Total	20.9	20.3-21.5
Male	23.4	22.6-24.3
Female	18.5	17.8-19.3
<b>18 years and over: age-adjusted<sup>2</sup></b>		
Total	20.8	20.2-21.4
Male	23.0	22.2-23.9
Female	18.7	17.9-19.5

<sup>1</sup>Crude estimates are presented in the figure.

<sup>2</sup>Estimates for this Healthy People 2010 Leading Health Indicator are age-adjusted to the 2000 projected U.S. standard population using five age groups: 18-24 years, 25-34 years, 35-44 years, 45-64 years, and 65 years and over.

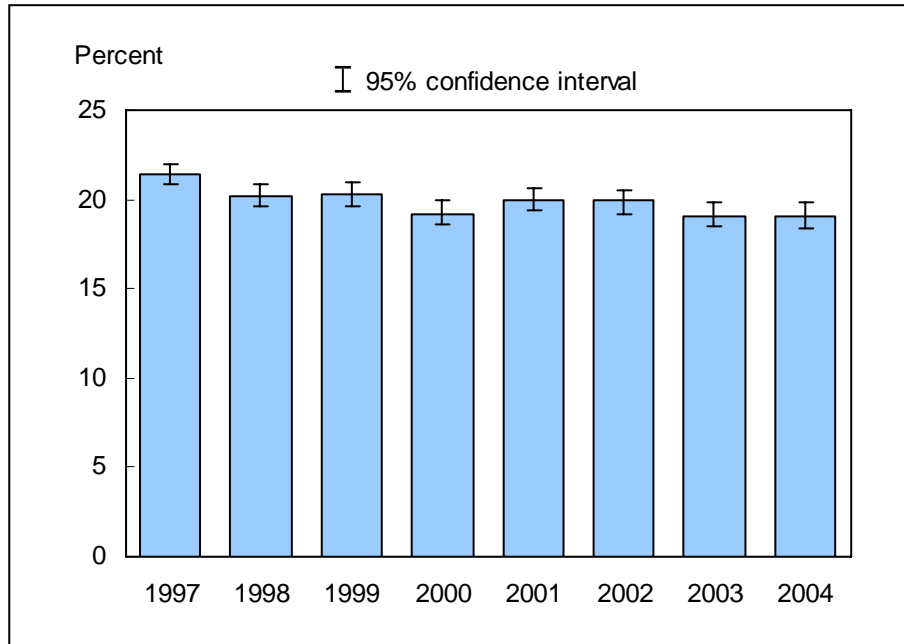
**Data table for figure 8.4. Adjusted prevalence of current smoking among adults aged 18 years and over, by race/ethnicity: United States, 2004**

Race/ethnicity	Percent (95% confidence interval)	
	Age- sex-adjusted <sup>1</sup>	Age-adjusted <sup>2</sup>
<b>Hispanic or Latino</b>	14.2 (13.1-15.4)	14.3 (13.2-15.5)
<b>Not Hispanic or Latino:</b>		
<b>White, single race</b>	22.7 (21.9-23.5)	22.7 (21.9-23.4)
<b>Black, single race</b>	20.0 (18.3-21.8)	19.7 (18.1-21.5)

<sup>1</sup>Age- sex-adjusted estimates are presented in the figure. Estimates are age- sex-adjusted to the 2000 projected U.S. standard population using five age groups: 18-24 years, 25-34 years, 35-44 years, 45-64 years, and 65 years and over.

<sup>2</sup>Estimates for this Healthy People 2010 Leading Health Indicator are age-adjusted to the 2000 projected U.S. standard population using five age groups: 18-24 years, 25-34 years, 35-44 years, 45-64 years, and 65 years and over.

**Figure 9.1. Percent of adults aged 18 years and over who had 5 or more drinks in 1 day at least once in the past year: United States, 1997-2004**



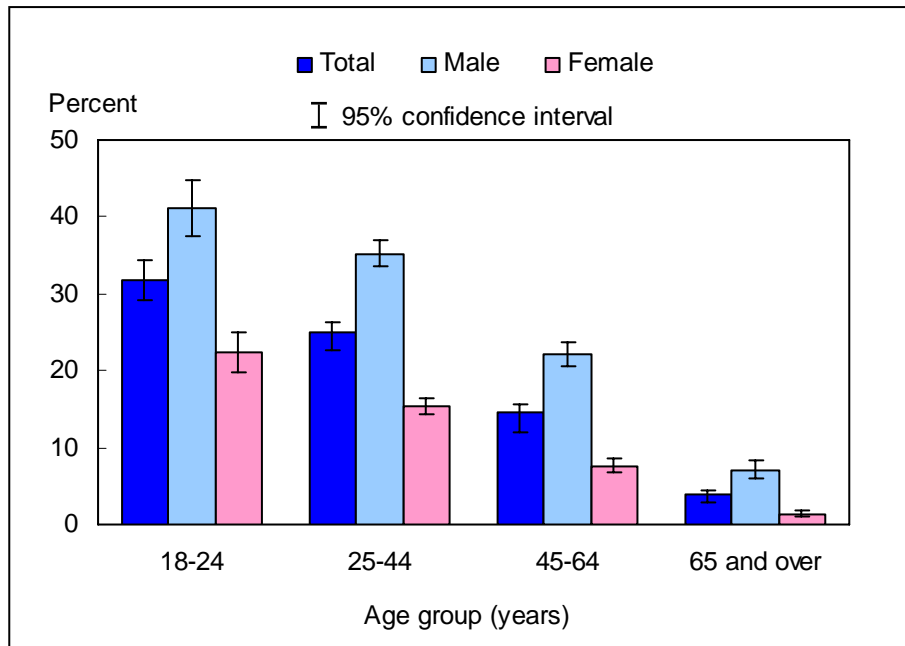
NOTES: The analyses excluded adults with unknown alcohol consumption (about 2% of respondents each year). Beginning with the 2003 data, the National Health Interview Survey transitioned to weights derived from the 2000 census. In this Early Release, estimates for 2000-02 were recalculated using weights derived from the 2000 census. See "About This Release" and table III in the Appendix for more details.

DATA SOURCE: Sample Adult Core component of the 1997-2004 National Health Interview Surveys.

■ In 2004, the percentage of adults who had five or more drinks in 1 day at least once in the past year was 19.1% (95% confidence interval=18.4%-19.8%).

■ From 2001 through 2003, the percentage of adults who had five or more drinks in 1 day at least once in the past year decreased from 20.0% to 19.1% and remained stable from 2003 to 2004.

**Figure 9.2. Percent of adults aged 18 years and over who had 5 or more drinks in 1 day at least once in the past year, by age group and sex: United States, 2004**



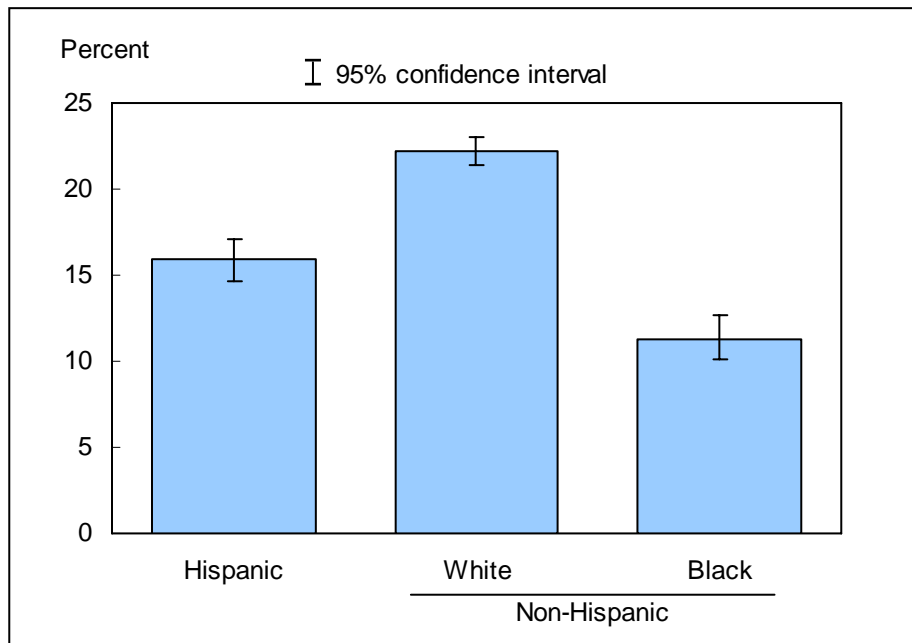
NOTE: The analyses excluded 783 adults (2.5%) with unknown alcohol consumption.

DATA SOURCE: Sample Adult Core component of the 2004 National Health Interview Survey.

■ For both men and women, younger adults were more likely than older adults to have had five or more drinks in 1 day at least once in the past year.

■ In all four age groups, men were considerably more likely than women to have had five or more drinks in 1 day at least once in the past year.

**Figure 9.3. Age- sex-adjusted percent of adults aged 18 years and over who had 5 or more drinks in 1 day at least once in the past year, by race/ethnicity: United States, 2004**



NOTES: The analyses excluded 783 adults (2.5%) with unknown alcohol consumption. Estimates are age- sex-adjusted to the 2000 projected U.S. standard population using four age groups: 18-24 years, 25-44 years, 45-64 years, and 65 years and over.

DATA SOURCE: Sample Adult Core component of the 2004 National Health Interview Survey.

■ The age- sex-adjusted percentage of adults who had five or more drinks in 1 day at least once in the past year was 15.9% for Hispanic adults, 22.2% for non-Hispanic white adults, and 11.3% for non-Hispanic black adults.

■ Non-Hispanic white adults were most likely to have had five or more drinks in 1 day at least once in the past year, followed by Hispanic adults and non-Hispanic black adults.



## Data tables for figures 9.1-9.3:

**Data table for figure 9.1. Percent of adults aged 18 years and over who had 5 or more drinks in 1 day at least once in the past year: United States, 1997-2004**

Year	Percent	95% confidence interval
1997	21.4	20.8-22.0
1998	20.2	19.6-20.8
1999	20.3	19.6-21.0
2000	19.2	18.6-19.9
2001	20.0	19.4-20.6
2002	19.9	19.2-20.5
2003	19.1	18.5-19.8
2004	19.1	18.4-19.8

**Data table for figure 9.2. Percent of adults aged 18 years and over who had 5 or more drinks in 1 day at least once in the past year, by age group and sex: United States, 2004**

Age and sex	Percent	95% confidence interval
<b>18-24 years</b>		
Total	31.7	29.1-34.3
Male	41.1	37.5-44.9
Female	22.3	19.8-25.0
<b>25-44 years</b>		
Total	25.1	24.1-26.2
Male	35.2	33.5-37.0
Female	15.4	14.3-16.5
<b>45-64 years</b>		
Total	14.6	13.8-15.5
Male	22.1	20.7-23.6
Female	7.6	6.9-8.5
<b>65 years and over</b>		
Total	3.8	3.2-4.4
Male	7.1	6.0-8.4
Female	1.4	1.0-1.9
<b>18 years and over: crude<sup>1</sup></b>		
Total	19.1	18.4-19.8
Male	27.7	26.6-28.8
Female	11.2	10.7-11.9
<b>18 years and over: age-adjusted<sup>2</sup></b>		
Total	19.2	18.5-19.9
Male	27.3	26.2-28.4
Female	11.6	11.0-12.2

<sup>1</sup>Crude estimates are presented in the figure.

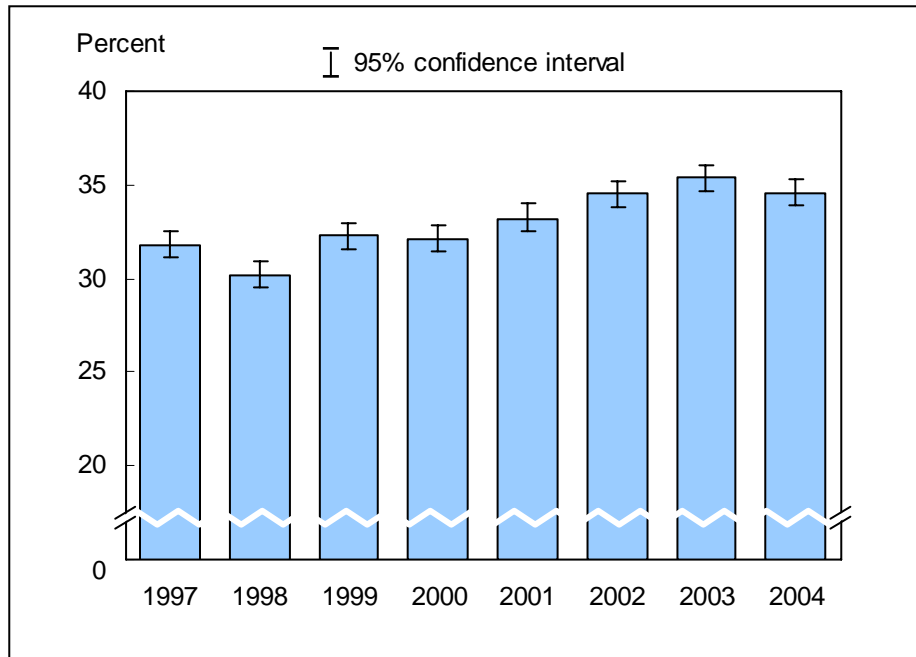
<sup>2</sup>Estimates are age-adjusted to the 2000 projected U.S. standard population using four age groups: 18-24 years, 25-44 years, 45-64 years, and 65 years and over.

**Data table for figure 9.3. Age- sex-adjusted percent of adults aged 18 years and over who had 5 or more drinks in 1 day at least once in the past year, by race/ethnicity: United States, 2004**

<b>Race/ethnicity</b>	<b>Percent<sup>1</sup></b>	<b>95% confidence interval</b>
<b>Hispanic or Latino</b>	15.9	14.7-17.1
<b>Not Hispanic or Latino:</b>		
<b>White, single race</b>	22.2	21.4-23.0
<b>Black, single race</b>	11.3	10.1-12.7

<sup>1</sup>Estimates are age- sex-adjusted to the 2000 projected U.S. standard population using four age groups: 18-24 years, 25-44 years, 45-64 years, and 65 years and over.

**Figure 10.1. Percent of adults aged 18 years and over who had ever been tested for human immunodeficiency virus: United States, 1997-2004**



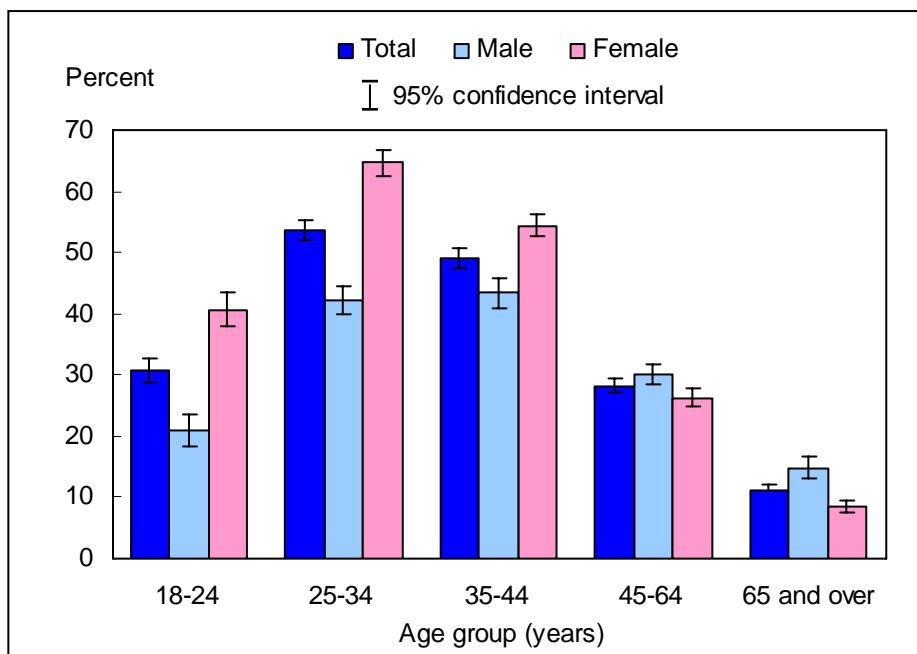
NOTES: The analyses excluded those with unknown human immunodeficiency virus (HIV) test status (about 4% of respondents each year). Individuals who received HIV testing solely as a result of blood donation were considered as not having been tested for HIV. Beginning with the 2003 data, the National Health Interview Survey transitioned to weights derived from the 2000 census. In this Early Release, estimates for 2000-02 were recalculated using weights derived from the 2000 census. See "About This Release" and table III in the Appendix for more details.

DATA SOURCE: Sample Adult Core component of the 1997-2004 National Health Interview Surveys

■ In 2004, the percentage of U.S. adults who had ever been tested for HIV was 34.6% (95% confidence interval = 33.9%-35.3%), which was lower than, but not significantly different from, the 2003 estimate of 35.4%.

■ The annual percentage of adults who had ever had an HIV test increased from 30.2% in 1998 to 35.4% in 2003.

**Figure 10.2. Percent of adults aged 18 years and over who had ever been tested for human immunodeficiency virus, by age group and sex: United States, 2004**



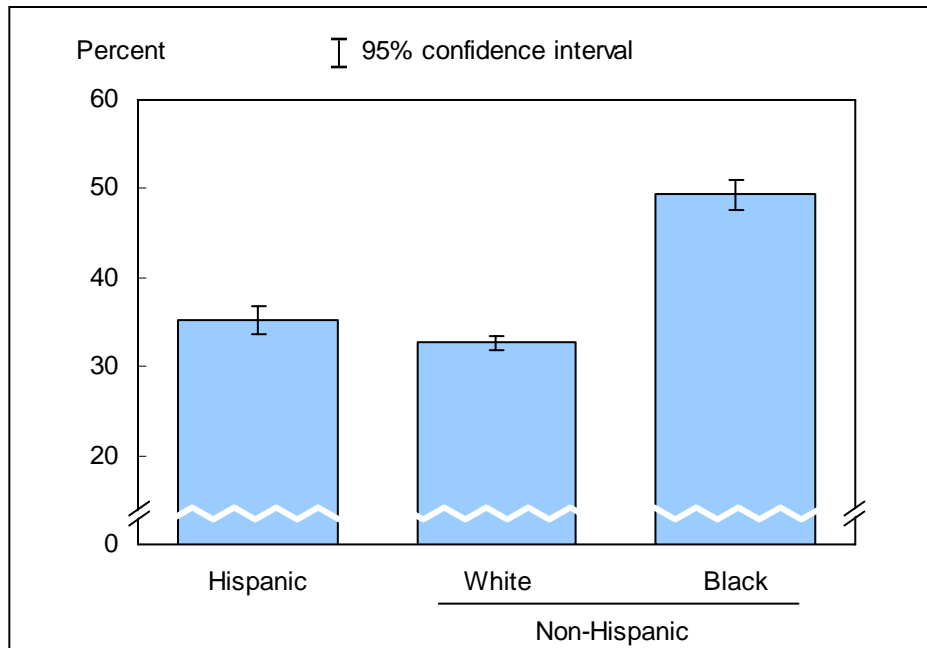
NOTES: The analyses excluded 1248 adults (4.0%) with unknown human immunodeficiency virus (HIV) test status. Individuals who received HIV testing solely as a result of blood donation were considered as not having been tested for HIV.

DATA SOURCE: Sample Adult Core component of the 2004 National Health Interview Survey.

■ For both sexes combined, the percentage of persons who ever had an HIV test was highest among adults aged 25-34 years (53.6%) and lowest among adults aged 65 years and over (11.1%).

■ For age groups 18-24 years, 25-34 years, and 35-44 years, women were more likely than men to have ever had an HIV test, whereas for age groups 45-64 years and 65 years and over, women were less likely than men to have ever had an HIV test.

**Figure 10.3. Age- sex-adjusted percent of adults aged 18 years and over who had ever been tested for human immunodeficiency virus, by race/ethnicity: United States, 2004**



NOTES: The analyses excluded 1248 adults (4.0%) with unknown human immunodeficiency virus (HIV) test status. Individuals who received HIV testing solely as a result of blood donation were considered as not having been tested for HIV. Estimates are age- sex-adjusted to the 2000 projected U.S. standard population using five age groups: 18-24 years, 25-34 years, 35-44 years, 45-64 years, and 65 years and over.

DATA SOURCE: Sample Adult Core component of the 2004 National Health Interview Survey.

■ The age- sex-adjusted percentages of persons who ever had an HIV test were 35.2% for Hispanic persons, 32.7% for non-Hispanic white persons, and 49.4% for non-Hispanic black persons.

■ Of the three race/ethnicity groups, non-Hispanic black persons were most likely to have ever had an HIV test.

## Data tables for figures 10.1-10.3:

Data table for figure 10.1. Percent of adults aged 18 years and over who had ever been tested for human immunodeficiency virus: United States, 1997-2004

Year	Percent	95% confidence interval
1997	31.8	31.1-32.5
1998	30.2	29.5-30.9
1999	32.3	31.6-33.0
2000	32.1	31.4-32.8
2001	33.2	32.5-34.0
2002	34.5	33.8-35.2
2003	35.4	34.7-36.1
2004	34.6	33.9-35.3

Data table for figure 10.2. Percent of adults aged 18 years and over who had ever been tested for human immunodeficiency virus, by age group and sex: United States, 2004

Age and sex	Percent	95% confidence interval
<b>18-24 years</b>		
Total	30.7	28.7-32.8
Male	20.8	18.3-23.5
Female	40.7	37.9-43.6
<b>25-34 years</b>		
Total	53.6	51.9-55.2
Male	42.2	39.9-44.6
Female	64.7	62.5-66.8
<b>35-44 years</b>		
Total	49.0	47.5-50.6
Male	43.4	41.0-45.8
Female	54.4	52.6-56.3
<b>45-64 years</b>		
Total	28.2	27.1-29.3
Male	30.2	28.6-31.8
Female	26.3	24.9-27.7
<b>65 years and over</b>		
Total	11.1	10.1-12.1
Male	14.8	13.0-16.7
Female	8.4	7.5-9.4
<b>18 years and over: crude<sup>1</sup></b>		
Total	34.6	33.9-35.3
Male	31.7	30.7-32.7
Female	37.3	36.4-38.3
<b>18 years and over: age-adjusted<sup>2</sup></b>		
Total	34.8	34.1-35.5
Male	31.4	30.5-32.4
Female	38.3	37.4-39.2

<sup>1</sup>Crude estimates are presented in the figure.

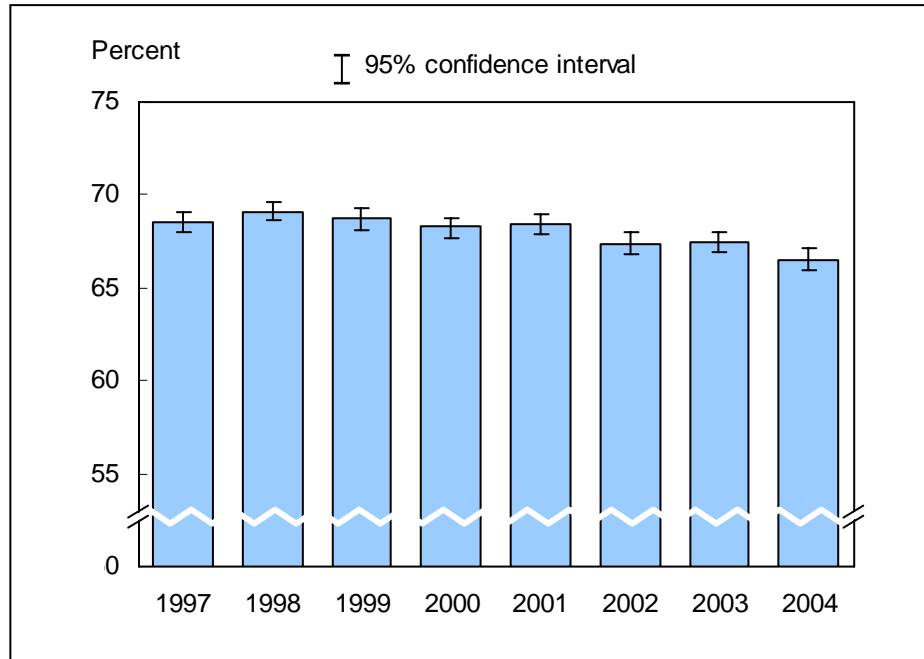
<sup>2</sup>Estimates are age-adjusted to the 2000 projected U.S. standard population using five age groups: 18-24 years, 25-34 years, 35-44 years, 45-64 years, and 65 years and over.

**Data table for figure 10.3. Age- sex-adjusted percent of adults aged 18 years and over who had ever been tested for human immunodeficiency virus, by race/ethnicity: United States, 2004**

<b>Race/ethnicity</b>	<b>Percent<sup>1</sup></b>	<b>95% confidence interval</b>
<b>Hispanic or Latino</b>	35.2	33.6-36.9
<b>Not Hispanic or Latino:</b>		
<b>White, single race</b>	32.7	31.9-33.5
<b>Black, single race</b>	49.4	47.6-51.1

<sup>1</sup>Estimates are age- sex-adjusted to the 2000 projected U.S. standard population using five age groups: 18-24 years, 25-34 years, 35-44 years, 45-64 years, and 65 years and over.

**Figure 11.1. Percent of persons of all ages who assessed their health as excellent or very good: United States, 1997-2004**



NOTES: Health status data were obtained by asking respondents to assess their own health and that of family members living in the same household as excellent, very good, good, fair, or poor. The analyses excluded persons with unknown health status (about 0.5% of respondents each year). Beginning with the 2003 data, the National Health Interview Survey transitioned to weights derived from the 2000 census. In this Early Release, estimates for 2000-02 were recalculated using weights derived from the 2000 census. See "About This Release" and table III in the Appendix for more details.

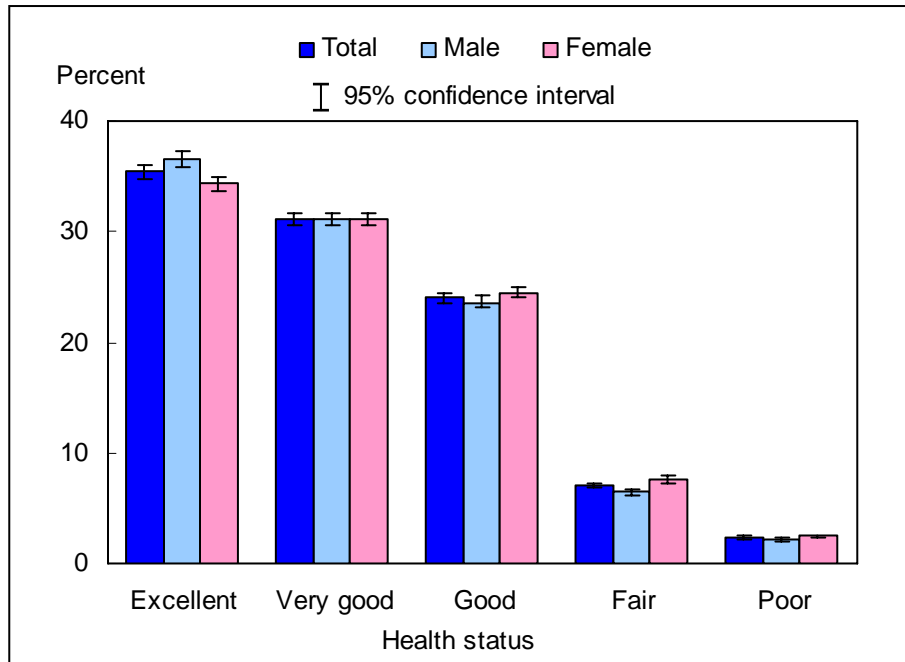
DATA SOURCE: Family Core component of the 1997-2004 National Health Interview Surveys.

■ In 2004, the percentage of persons who assessed their health as excellent or very good was 66.5% (95% confidence interval = 66.0%-67.1%). This estimate was lower than the 2003 estimate of 67.5%.

■ From 1997 through 2001, the annual percentage of persons who assessed their health as excellent or very good remained similar: 68.5% in 1997, 69.1% in 1998, 68.7% in 1999, 68.3% in 2000, and 68.4% in 2001. The estimates decreased from 2001 to 2004 (66.5%).



**Figure 11.2. Percent distribution of respondent-assessed health status, by sex for all ages: United States, 2004**



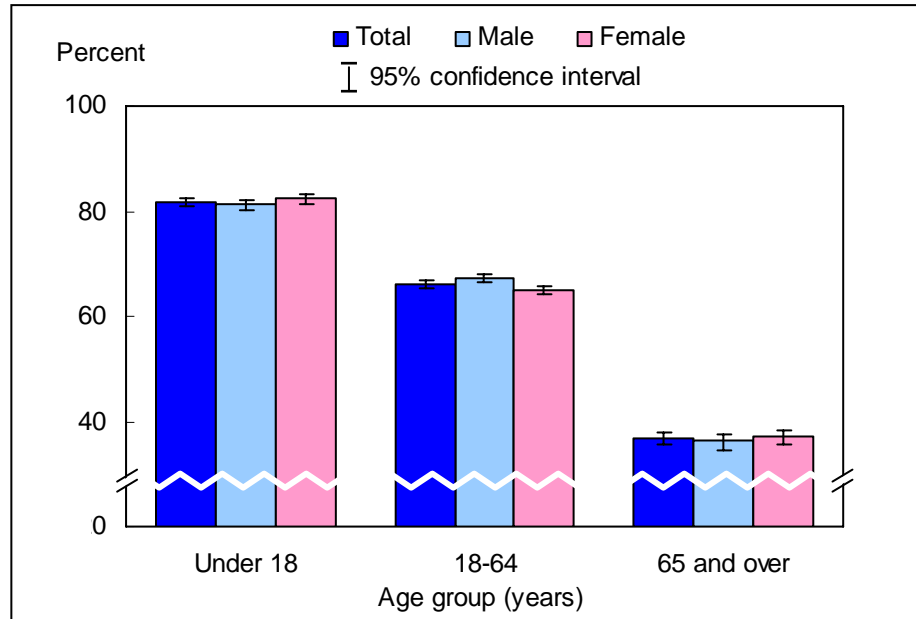
NOTES: Health status data were obtained by asking respondents to assess their own health and that of family members living in the same household as excellent, very good, good, fair, or poor. The analyses excluded 381 persons (0.41%) with unknown health status.

DATA SOURCE: Family Core component of the 2004 National Health Interview Survey.

■ For both sexes combined, most persons assessed their health as either excellent (35.4%) or very good (31.1%). A smaller percentage of persons assessed their health as good (24.1%), and even fewer assessed their health as fair (7.0%) or poor (2.4%).

■ Compared with males, females were less likely to assess their health as excellent and more likely to assess their health as good, fair, or poor.

**Figure 11.3. Percent of persons of all ages who assessed their health as excellent or very good, by age group and sex: United States, 2004**

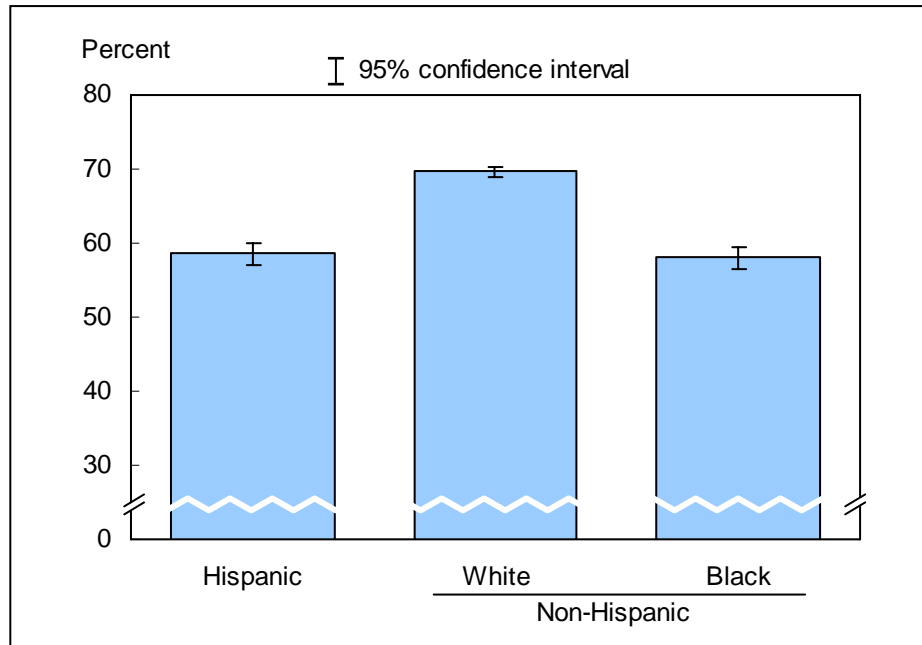


NOTES: Health status data were obtained by asking respondents to assess their own health and that of family members living in the same household as excellent, very good, good, fair, or poor. The analyses excluded 381 persons (0.41%) with unknown health status.

DATA SOURCE: Family Core component of the 2004 National Health Interview Survey.

- For both sexes combined, the percentage of persons who assessed their health as excellent or very good decreased with age: 81.8% for those under 18 years, 66.0% for those aged 18-64 years, and 36.7% for those aged 65 years and over.
- For persons aged 18-64 years, the percentage of persons who assessed their health as excellent or very good was higher for men than for women.

**Figure 11.4. Age- sex-adjusted percent of persons of all ages who assessed their health as excellent or very good, by race/ethnicity: United States, 2004**



NOTES: Health status data were obtained by asking respondents to assess their own health and that of family members living in the same household as excellent, very good, good, fair, or poor. The analyses excluded 381 persons (0.41%) with unknown health status. Estimates are age- sex-adjusted to the 2000 projected U.S. standard population using three age groups: under 18 years, 18-64 years, and 65 years and over.

DATA SOURCE: Family Core component of the 2004 National Health Interview Survey.

■ After adjusting for age and sex, the percentage of persons who assessed their health as excellent or very good was 58.6% for Hispanic persons, 69.6% for non-Hispanic white persons, and 58.1% for non-Hispanic black persons.

■ The health of Hispanic persons and non-Hispanic black persons was less likely to be assessed as excellent or very good than that of non-Hispanic white persons.

## Data tables for figures 11.1-11.4:

**Data table for figure 11.1. Percent of persons of all ages who assessed their health as excellent or very good: United States, 1997-2004**

Year	Percent	95% confidence interval
1997	68.5	68.0-69.1
1998	69.1	68.6-69.6
1999	68.7	68.1-69.3
2000	68.3	67.7-68.8
2001	68.4	67.9-69.0
2002	67.4	66.8-68.0
2003	67.5	66.9-68.0
2004	66.5	66.0-67.1

**Data table for figure 11.2. Percent distribution of respondent-assessed health status, by sex for all ages: United States, 2004**

Health status and sex	Percent	95% confidence interval
<b>Excellent</b>		
Total	35.4	34.8-36.0
Male	36.6	35.9-37.3
Female	34.3	33.6-35.0
<b>Very good</b>		
Total	31.1	30.6-31.6
Male	31.2	30.6-31.7
Female	31.1	30.5-31.6
<b>Good</b>		
Total	24.1	23.6-24.5
Male	23.6	23.1-24.2
Female	24.5	24.0-25.0
<b>Fair</b>		
Total	7.0	6.8-7.3
Male	6.5	6.2-6.7
Female	7.6	7.3-7.9
<b>Poor</b>		
Total	2.4	2.2-2.5
Male	2.2	2.0-2.3
Female	2.6	2.4-2.7

**Data table for figure 11.3. Percent of persons of all ages who assessed their health as excellent or very good, by age group and sex: United States, 2004**

Age and sex	Percent	95% confidence interval
<b>Under 18 years</b>		
Total	81.8	80.9-82.6
Male	81.3	80.3-82.2
Female	82.3	81.2-83.3
<b>18-64 years</b>		
Total	66.0	65.4-66.7
Male	67.3	66.6-68.0
Female	64.9	64.2-65.6
<b>65 years and over</b>		
Total	36.7	35.6-37.9
Male	36.2	34.6-37.7
Female	37.1	35.8-38.4
<b>All ages: crude<sup>1</sup></b>		
Total	66.5	66.0-67.1
Male	67.7	67.2-68.3
Female	65.3	64.7-66.0
<b>All ages: age-adjusted<sup>2</sup></b>		
Total	66.4	65.9-66.9
Male	66.9	66.4-67.5
Female	65.9	65.2-66.5

<sup>1</sup>Crude estimates are presented in the figure.

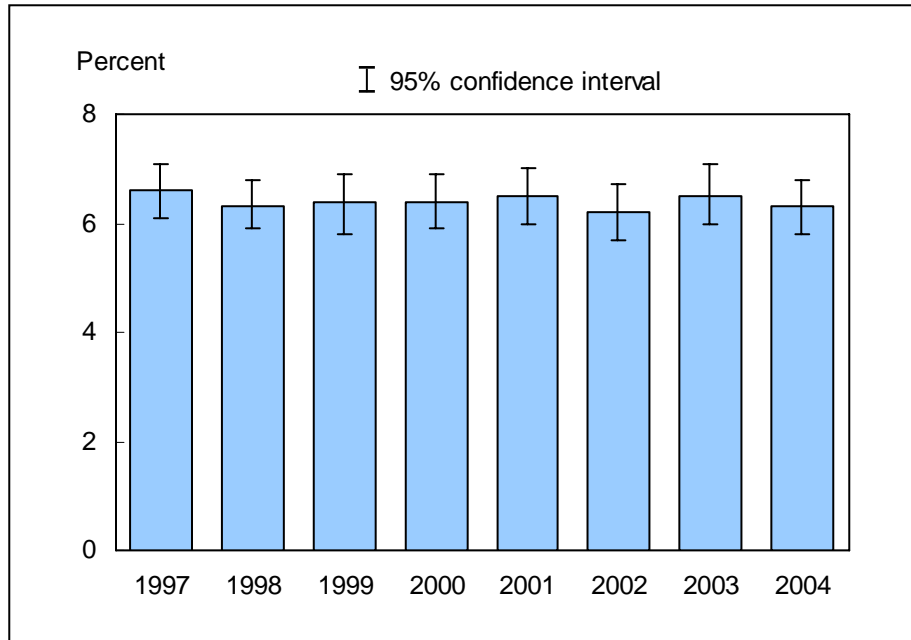
<sup>2</sup>Estimates are age-adjusted to the 2000 projected U.S. standard population using three age groups: under 18 years, 18-64 years, and 65 years and over.

**Data table for figure 11.4. Age- sex-adjusted percent of persons of all ages who assessed their health as excellent or very good, by race/ethnicity: United States, 2004**

Race/ethnicity	Percent <sup>1</sup>	95% confidence interval
Hispanic or Latino	58.6	57.1-60.1
<b>Not Hispanic or Latino:</b>		
White, single race	69.6	69.0-70.2
Black, single race	58.1	56.6-59.5

<sup>1</sup>Estimates are age- sex-adjusted to the 2000 projected U.S. standard population using three age groups: under 18 years, 18-64 years, and 65 years and over.

**Figure 12.1. Percent of adults aged 65 years and over who need help with personal care from other persons: United States, 1997-2004**



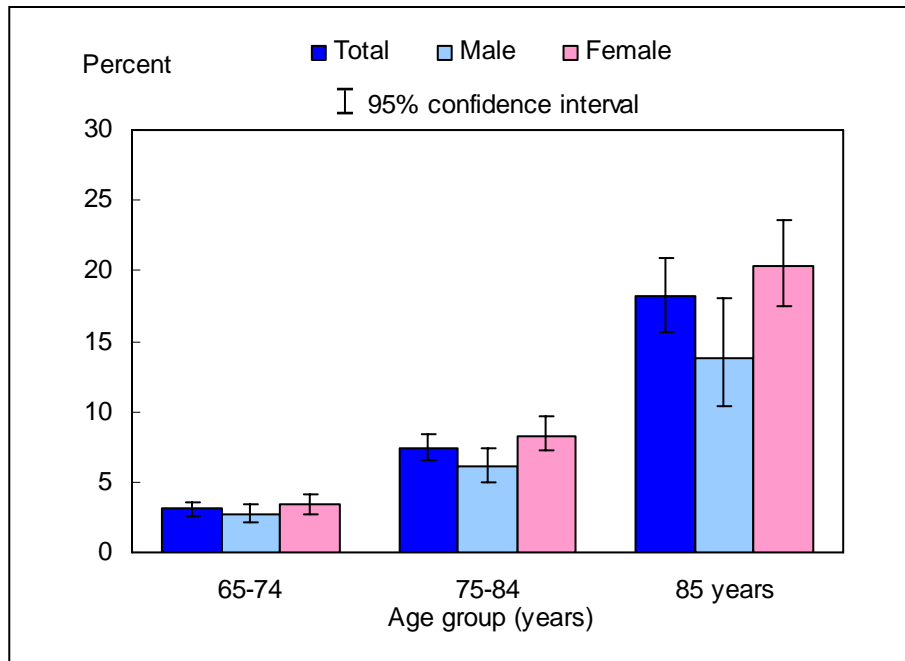
NOTES: Personal care needs, or activities of daily living (ADL), include eating, bathing, dressing, or getting around inside the person's home. The analyses excluded persons with unknown information on personal care needs (about 0.01% of respondents each year). Beginning with the 2003 data, the National Health Interview Survey transitioned to weights derived from the 2000 census. In this Early Release, estimates for 2000-02 were recalculated using weights derived from the 2000 census. See "About This Release" and table III in the Appendix for more details.

DATA SOURCE: Family Core component of the 1997-2004 National Health Interview Surveys.

■ In 2004, 6.3% (95% confidence interval = 5.8%-6.8%) of adults aged 65 years and over needed help with personal care from other persons. This estimate was not significantly different from the 2003 estimate of 6.5%.

■ The annual percentage of adults who needed help with personal care from other persons was 6.6% in 1997, 6.3% in 1998, 6.4% in 1999, 6.4% in 2000, 6.5% in 2001, 6.2% in 2002, 6.5% in 2003, and 6.3% in 2004.

**Figure 12.2. Percent of adults aged 65 years and over who need help with personal care from other persons, by age group and sex: United States, 2004**



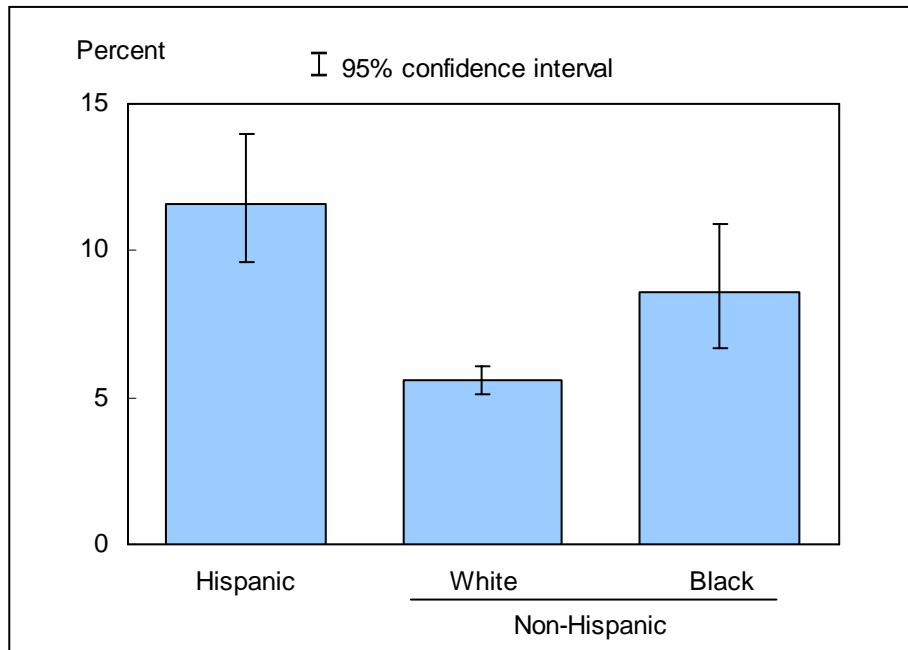
NOTE: Personal care needs, or activities of daily living (ADL), include eating, bathing, dressing, or getting around inside the person's home.

DATA SOURCE: Family Core component of the 2004 National Health Interview Survey.

■ For both sexes combined, adults aged 85 years and over were more than five times as likely as adults aged 65-74 years old to need help with personal care from other persons (18.2% vs. 3.1%).

■ For adults aged 75-84 years and 85 years and over, the percentage of women who needed help with personal care from other persons was higher than that of men.

**Figure 12.3. Age- sex-adjusted percent of adults aged 65 years and over who need help with personal care from other persons, by race/ethnicity: United States, 2004**



NOTES: Personal care needs, or activities of daily living (ADL), include eating, bathing, dressing, or getting around inside the person's home. Estimates are age- sex-adjusted to the 2000 projected U.S. standard population using three age groups: 65-74 years, 75-84 years, and 85 years and over.

DATA SOURCE: Family Core component of the 2004 National Health Interview Survey.

■ The age- sex-adjusted percentage of persons who needed help with personal care from other persons was 11.6% for Hispanic persons, 5.6% for non-Hispanic white persons, and 8.6% for non-Hispanic black persons.

■ The percentage of those who needed help with personal care from other persons was higher for Hispanic persons and non-Hispanic black persons than for non-Hispanic white persons.



## Data tables for figures 12.1-12.3:

Data table for figure 12.1. Percent of adults aged 65 years and over who need help with personal care from other persons: United States, 1997–2004

Year	Percent	95% confidence interval
1997	6.6	6.1-7.1
1998	6.3	5.9-6.8
1999	6.4	5.8-6.9
2000	6.4	5.9-6.9
2001	6.5	6.0-7.0
2002	6.2	5.7-6.7
2003	6.5	6.0-7.1
2004	6.3	5.8-6.8

Data table for figure 12.2. Percent of adults aged 65 years and over who need help with personal care from other persons, by age group and sex: United States, 2004

Age and sex	Percent	95% confidence interval
<b>65-74 years</b>		
Total	3.1	2.6-3.6
Male	2.7	2.1-3.4
Female	3.4	2.7-4.1
<b>75-84 years</b>		
Total	7.4	6.5-8.4
Male	6.1	5.0-7.4
Female	8.3	7.2-9.6
<b>85 years and over</b>		
Total	18.2	15.7-20.9
Male	13.8	10.4-18.1
Female	20.4	17.5-23.6
<b>65 years and over: crude<sup>1</sup></b>		
Total	6.3	5.8-6.8
Male	4.8	4.2-5.4
Female	7.4	6.7-8.1
<b>65 years and over: age-adjusted<sup>2</sup></b>		
Total	6.5	6.0-7.0
Male	5.2	4.6-6.0
Female	7.2	6.6-7.9

<sup>1</sup>Crude estimates are presented in the figure.

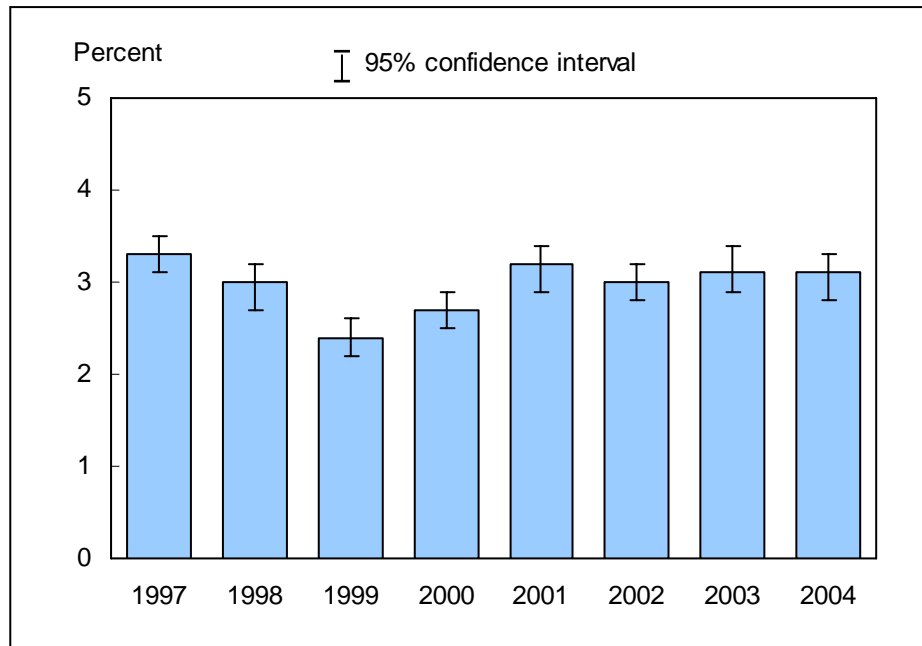
<sup>2</sup>Estimates are age-adjusted to the 2000 projected U.S. standard population using three age groups: 65-74 years, 75-84 years, and 85 years and over.

**Data table for figure 12.3. Age- sex-adjusted percent of adults aged 65 years and over who need help with personal care from other persons, by race/ethnicity: United States, 2004**

<b>Race/ethnicity</b>	<b>Percent <sup>1</sup></b>	<b>95% confidence interval</b>
<b>Hispanic or Latino</b>	11.6	9.6-14.0
<b>Not Hispanic or Latino:</b>		
<b>White, single race</b>	5.6	5.1-6.1
<b>Black, single race</b>	8.6	6.7-10.9

<sup>1</sup>Estimates are age- sex-adjusted to the 2000 projected U.S. standard population using three age groups: 65-74 years, 75-84 years, and 85 years and over.

**Figure 13.1. Percent of adults aged 18 years and over who experienced serious psychological distress during the past 30 days: United States, 1997–2004**



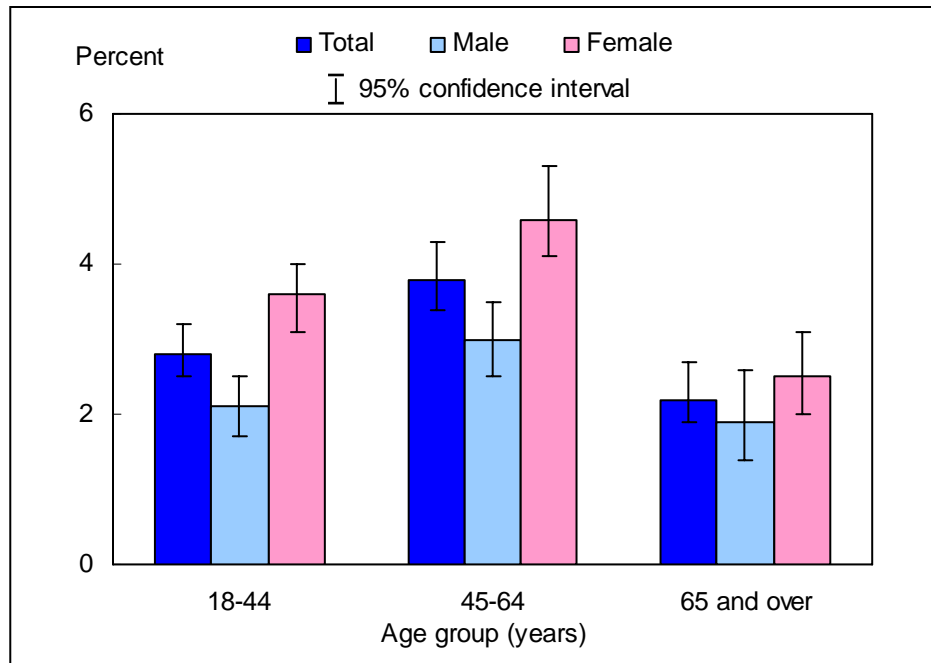
NOTES: Six psychological distress questions are included in the Sample Adult Core component. These questions ask how often a respondent experienced certain symptoms of psychological distress during the past 30 days. The response codes (0-4) of the six items for each person are summed to yield a scale with a 0-to-24 range. A value of 13 or more for this scale is used here to define serious psychological distress (9). Beginning with the 2003 data, the National Health Interview Survey transitioned to weights derived from the 2000 census. In this Early Release, estimates for 2000-02 were recalculated using weights derived from the 2000 census. See "About This Release" and table III in the Appendix for more details.

DATA SOURCE: Sample Adult Core component of the 1997-2004 National Health Interview Surveys.

■ In 2004, 3.1% (95% confidence interval = 2.8%-3.3%) of adults aged 18 years and over experienced serious psychological distress during the past 30 days.

■ The annual percentage of adults who experienced serious psychological distress during the past 30 days declined significantly from 3.3% in 1997 to 2.4% in 1999, then increased from 2.4% in 1999 to 3.2% in 2001, and shows no trend in more recent years.

**Figure 13.2. Percent of adults aged 18 years and over who experienced serious psychological distress during the past 30 days, by age group and sex: United States, 2004**

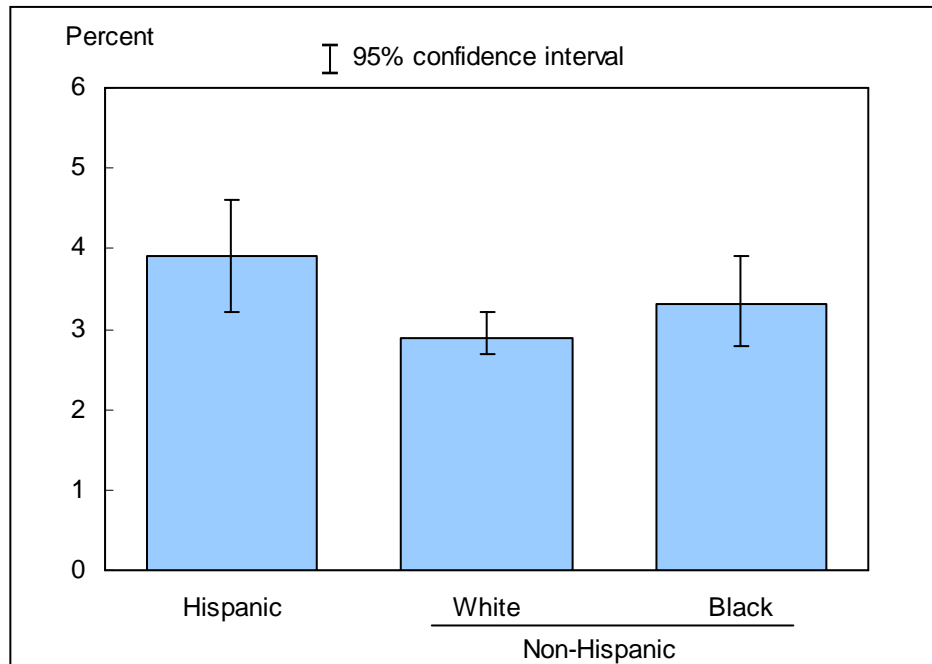


NOTES: Six psychological distress questions are included in the Sample Adult Core component. These questions ask how often a respondent experienced certain symptoms of psychological distress during the past 30 days. The response codes (0-4) of the six items for each person are summed to yield a scale with a 0-to-24 range. A value of 13 or more for this scale is used here to define serious psychological distress (9).

DATA SOURCE: Sample Adult Core component of the 2004 National Health Interview Survey.

- For both sexes combined, persons aged 45-64 years (3.8%) were more likely to have experienced serious psychological distress during the past 30 days compared with persons aged 18-44 years (2.8%) and 65 years and over (2.2%).
- For age groups 18-44 years and 45-64 years, women were more likely than men to have experienced serious psychological distress during the past 30 days.

**Figure 13.3. Age- sex-adjusted percent of adults aged 18 years and over who experienced serious psychological distress during the past 30 days, by race/ethnicity: United States, 2004**



NOTES: Six psychological distress questions are included in the Sample Adult Core component. These questions ask how often a respondent experienced certain symptoms of psychological distress during the past 30 days. The response codes (0-4) of the six items for each person are summed to yield a scale with a 0-to-24 range. A value of 13 or more for this scale is used here to define serious psychological distress (9). Estimates are age- sex-adjusted to the 2000 projected U.S. standard population using three age groups: 18-44 years, 45-64 years, and 65 years and over.

DATA SOURCE: Sample Adult Core component of the 2004 National Health Interview Survey.

■ The age- sex-adjusted prevalence of serious psychological distress was 3.9% for Hispanic persons, 2.9% for non-Hispanic white persons, and 3.3% for non-Hispanic black persons.

■ Of the three race/ethnicity groups, Hispanic persons were most likely to have experienced serious psychological distress during the past 30 days.

## Data tables for figures 13.1-13.3:

Data table for figure 13.1. Percent of adults aged 18 years and over who experienced serious psychological distress during the past 30 days: United States, 1997-2004

Year	Percent	95% confidence interval
1997	3.3	3.1-3.5
1998	3.0	2.7-3.2
1999	2.4	2.2-2.6
2000	2.7	2.5-2.9
2001	3.2	2.9-3.4
2002	3.0	2.8-3.2
2003	3.1	2.9-3.4
2004	3.1	2.8-3.3

Data table for figure 13.2. Percent of adults aged 18 and over who experienced serious psychological distress during the past 30 days, by age group and sex: United States, 2004

Age and sex	Percent	95% confidence interval
<b>18-44 years</b>		
Total	2.8	2.5-3.2
Male	2.1	1.7-2.5
Female	3.6	3.1-4.0
<b>45-64 years</b>		
Total	3.8	3.4-4.3
Male	3.0	2.5-3.5
Female	4.6	4.1-5.3
<b>65 years and over</b>		
Total	2.2	1.9-2.7
Male	1.9	1.4-2.6
Female	2.5	2.0-3.1
<b>18 years and over: crude<sup>1</sup></b>		
Total	3.1	2.8-3.3
Male	2.4	2.1-2.7
Female	3.7	3.4-4.1
<b>18 years and over: age-adjusted<sup>2</sup></b>		
Total	3.0	2.8-3.3
Male	2.3	2.0-2.6
Female	3.7	3.4-4.1

<sup>1</sup>Crude estimates are presented in the figure.

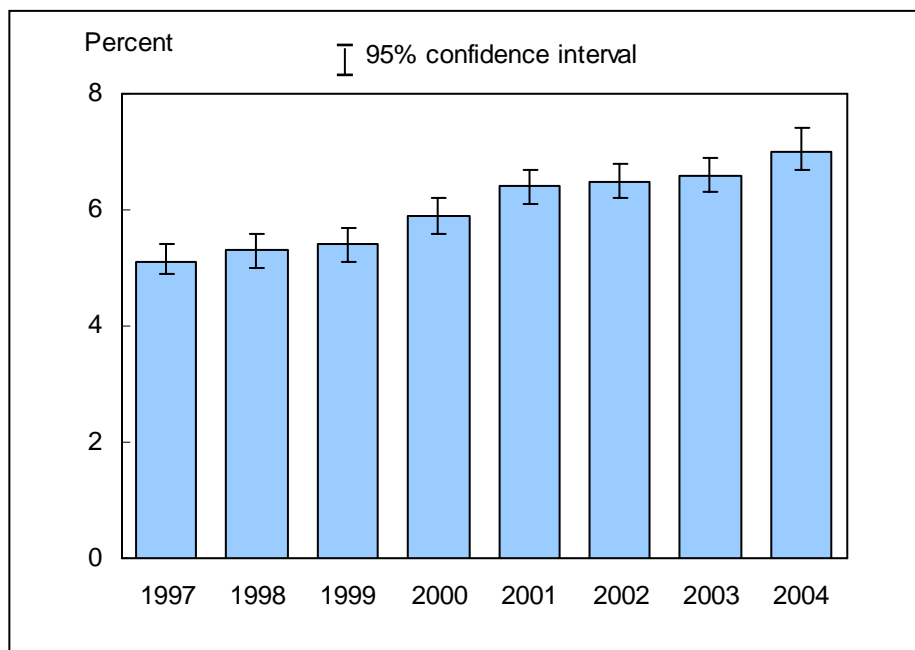
<sup>2</sup>Estimates are age-adjusted to the 2000 projected U.S. standard population using three age groups: 18-44 years, 45-64 years, and 65 years and over.

**Data table for figure 13.3. Age- sex-adjusted percent of adults aged 18 years and over who experienced serious psychological distress during the past 30 days, by race/ethnicity: United States, 2004**

<b>Race/ethnicity</b>	<b>Percent<sup>1</sup></b>	<b>95% confidence interval</b>
<b>Hispanic or Latino</b>	3.9	3.2-4.6
<b>Not Hispanic or Latino:</b>		
<b>White, single race</b>	2.9	2.7-3.2
<b>Black, single race</b>	3.3	2.8-3.9

<sup>1</sup>Estimates are age- sex-adjusted to the 2000 projected U.S. standard population using five age groups: 18-24 years, 25-34 years, 35-44 years, 45-64 years, and 65 years and over.

**Figure 14.1. Prevalence of diagnosed diabetes among adults aged 18 years and over: United States, 1997-2004**



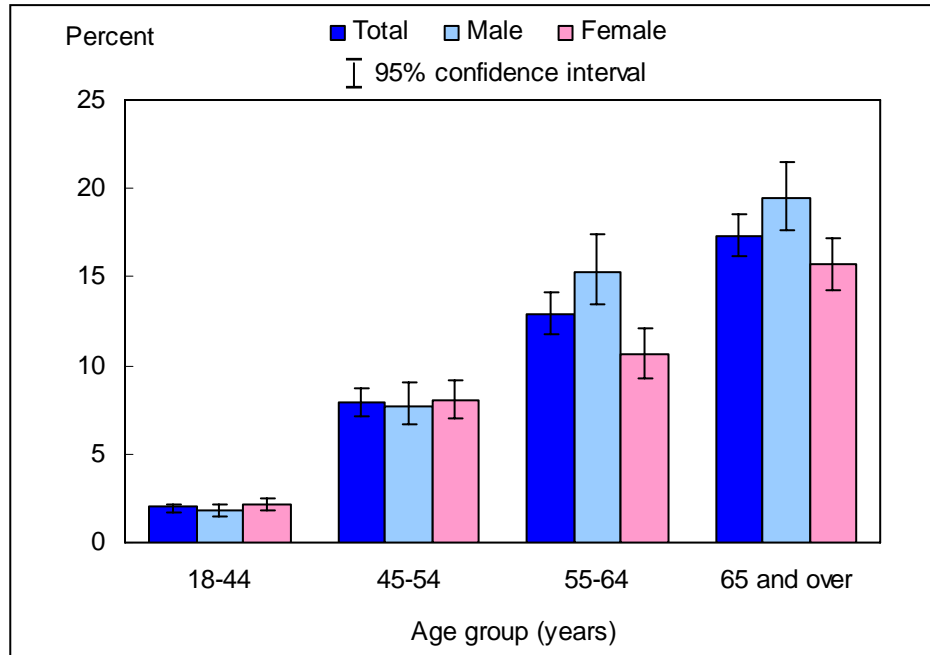
NOTES: Prevalence of diagnosed diabetes is based on self-report of ever having been diagnosed with diabetes by a doctor or other health professional. Persons reporting "borderline" diabetes status and women reporting diabetes only during pregnancy were not coded as having diabetes in the analyses. The analyses excluded persons with unknown diabetes status (about 0.1% of respondents each year). Beginning with the 2003 data, the National Health Interview Survey transitioned to weights derived from the 2000 census. In this Early Release, estimates for 2000-02 were recalculated using weights derived from the 2000 census. See "About This Release" and table III in the Appendix for more details.

DATA SOURCE: Sample Adult Core component of the 1997-2004 National Health Interview Surveys.

- In 2004, 7.0% (95% confidence interval = 6.7%-7.4%) of U.S. adults aged 18 years and over had ever been diagnosed as having diabetes.
- From 1997 to 2004, there was an increasing trend in the prevalence of diagnosed diabetes among U.S. adults aged 18 years and over, from 5.1% in 1997 to 7.0% in 2004.



**Figure 14.2. Prevalence of diagnosed diabetes among adults aged 18 years and over, by age group and sex: United States, 2004**

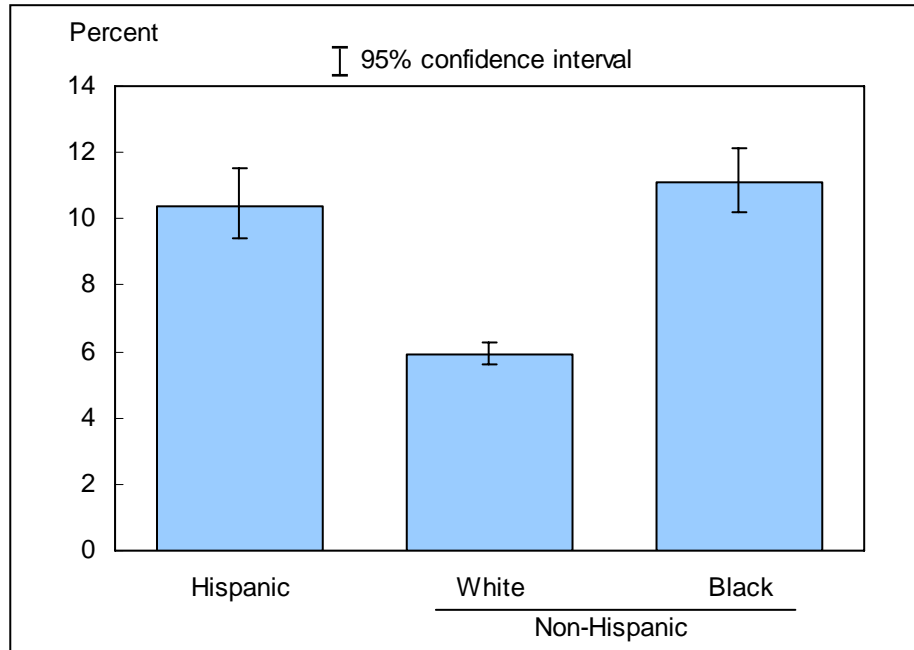


NOTES: Prevalence of diagnosed diabetes is based on self-report of ever having been diagnosed with diabetes by a doctor or other health professional. Persons reporting "borderline" diabetes status and women reporting diabetes only during pregnancy were not coded as having diabetes in the analyses. The analyses excluded 27 persons (0.1%) with unknown diabetes status.

DATA SOURCE: Sample Adult Core component of the 2004 National Health Interview Survey.

- For both sexes combined, the prevalence of diagnosed diabetes increased with age, with the highest rate among adults aged 65 years and over (17.3%) and the lowest rate among adults aged 18-44 years (2.0%).
- For age groups 55-64 years and 65 years and over, the prevalence of diagnosed diabetes was higher among men than women.

**Figure 14.3. Age- sex-adjusted prevalence of diagnosed diabetes among adults aged 18 years and over, by race/ethnicity: United States, 2004**



NOTES: Prevalence of diagnosed diabetes is based on self-report of ever having been diagnosed with diabetes by a doctor or other health professional. Persons reporting "borderline" diabetes status and women reporting diabetes only during pregnancy were not coded as having diabetes in the analyses. The analyses excluded 27 persons (0.1%) with unknown diabetes status. Estimates are age- sex-adjusted to the 2000 projected U.S. standard population using four age groups: 18-44 years, 45-54 years, 55-64 years, and 65 years and over.

DATA SOURCE: Sample Adult Core component of the 2004 National Health Interview Survey.

- The age- sex-adjusted prevalence of diagnosed diabetes was 10.4% for Hispanic persons, 5.9% for non-Hispanic white persons, and 11.1% for non-Hispanic black persons.
- The prevalence of diagnosed diabetes was higher among non-Hispanic black persons and Hispanic persons than among non-Hispanic white persons.

## Data tables for figures 14.1-14.3:

**Data table for figure 14.1. Prevalence of diagnosed diabetes among adults aged 18 years and over: United States, 1997–2004**

Year	Percent (95% confidence interval)	
	Crude <sup>1</sup>	Age-adjusted <sup>2</sup>
1997	5.1 (4.9-5.4)	5.3 (5.1-5.6)
1998	5.3 (5.0-5.6)	5.4 (5.1-5.7)
1999	5.4 (5.1-5.7)	5.5 (5.2-5.8)
2000	5.9 (5.6-6.2)	6.0 (5.7-6.3)
2001	6.4 (6.1-6.7)	6.4 (6.1-6.7)
2002	6.5 (6.2-6.8)	6.5 (6.2-6.8)
2003	6.6 (6.3-6.9)	6.5 (6.2-6.9)
2004	7.0 (6.7-7.4)	6.9 (6.6-7.3)

Crude estimates are presented in the figure.

<sup>2</sup>Estimates are age-adjusted to the 2000 projected U.S. standard population using four age groups: 18-44 years, 45-54 years, 55-64 years, and 65 years and over.

**Data table for figure 14.2. Prevalence of diagnosed diabetes among adults aged 18 years and over, by age group and sex: United States, 2004**

Age and sex	Percent	95% confidence interval
<b>18-44 years</b>		
Total	2.0	1.7-2.2
Male	1.8	1.5-2.2
Female	2.1	1.8-2.5
<b>45-54 years</b>		
Total	7.9	7.1-8.7
Male	7.7	6.7-9.0
Female	8.0	7.0-9.2
<b>55-64 years</b>		
Total	12.9	11.8-14.1
Male	15.3	13.5-17.4
Female	10.6	9.3-12.1
<b>65 years and over</b>		
Total	17.3	16.2-18.5
Male	19.5	17.7-21.5
Female	15.7	14.3-17.2
<b>18 years and over: crude<sup>1</sup></b>		
Total	7.0	6.7-7.4
Male	7.3	6.8-7.8
Female	6.8	6.4-7.2
<b>18 years and over: age-adjusted<sup>2</sup></b>		
Total	6.9	6.6-7.3
Male	7.5	7.1-8.0
Female	6.5	6.1-6.9

<sup>1</sup>Crude estimates are presented in the figure.

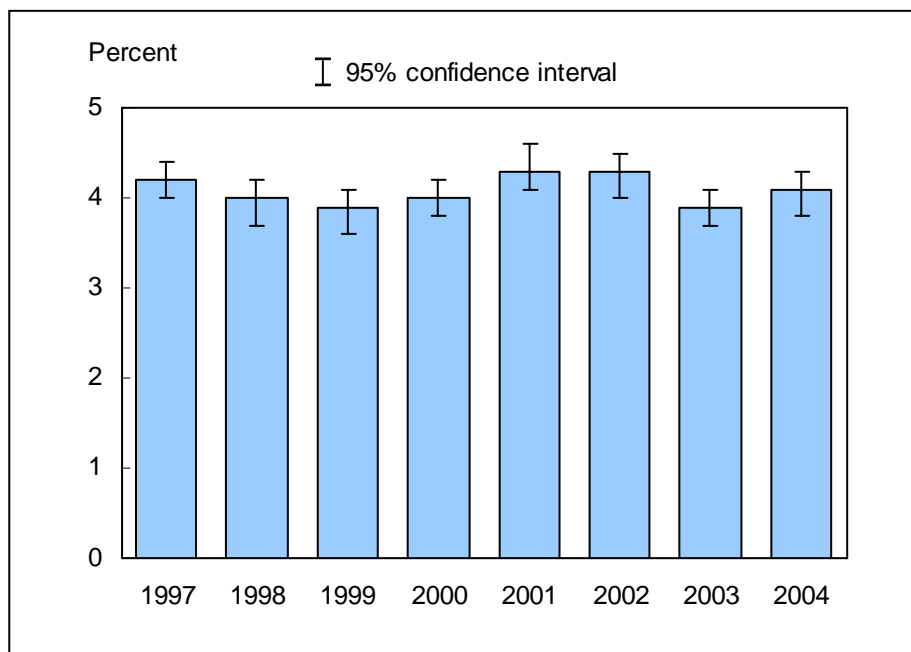
<sup>2</sup>Estimates are age-adjusted to the 2000 projected U.S. standard population using four age groups: 18-44 years, 45-54 years, 55-64 years, and 65 years and over.

**Data table for figure 14.3. Age- sex-adjusted prevalence of diagnosed diabetes among adults aged 18 years and over, by race/ethnicity: United States, 2004**

Race/ethnicity	Percent <sup>1</sup>	95% confidence interval
<b>Hispanic or Latino</b>	10.4	9.4-11.5
<b>Not Hispanic or Latino:</b>		
<b>White, single race</b>	5.9	5.6-6.3
<b>Black, single race</b>	11.1	10.2-12.1

<sup>1</sup>Estimates are age- sex-adjusted to the 2000 projected U.S. standard population using four age groups: 18-44 years, 45-54 years, 55-64 years, and 65 years and over.

**Figure 15.1. Percent of persons of all ages who experienced an asthma episode in the past 12 months: United States, 1997-2004**

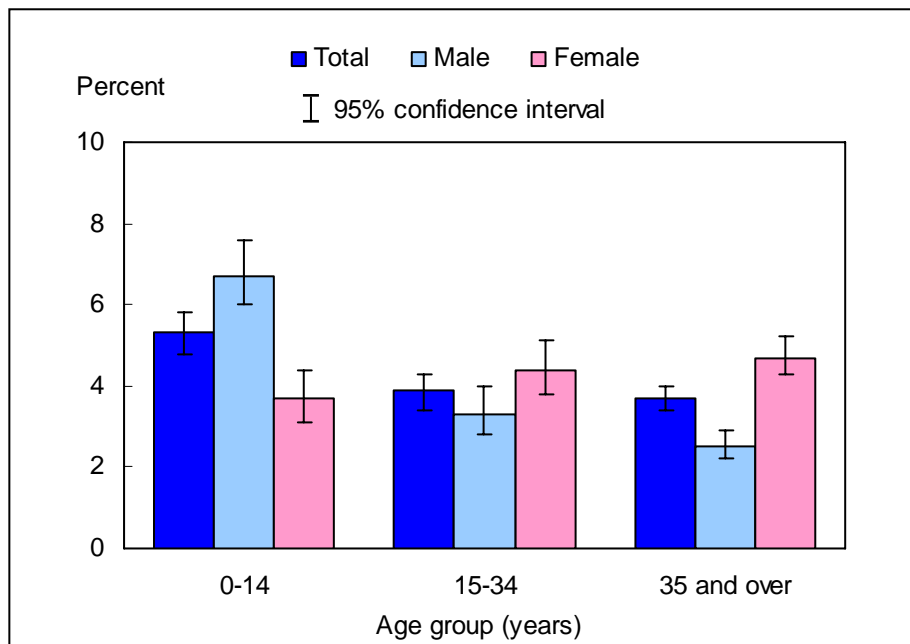


NOTES: Information on an episode of asthma or asthma attack during the past 12 months is self-reported by adults aged 18 years and over. For children under age 18 years, the information is collected from an adult family member, usually a parent, who is knowledgeable about the child's health. The analyses excluded people with unknown asthma episode status (about 0.3% of respondents each year). Beginning with the 2003 data, the National Health Interview Survey transitioned to weights derived from the 2000 census. In this Early Release, estimates for 2000-02 were recalculated using weights derived from the 2000 census. See "About This Release" and table III in the Appendix for more details.

DATA SOURCE: Sample Adult and Sample Child Core components of the 1997-2004 National Health Interview Surveys.

- In 2004, the percentage of persons of all ages who experienced an asthma episode in the past 12 months was 4.1% (95% confidence interval = 3.8%-4.3%), which was higher than, but not significantly different from, the 2003 estimate of 3.9%.
- The percentage of persons of all ages who experienced an asthma episode in the past 12 months decreased from 4.2% in 1997 to 3.9% in 1999, but increased significantly to 4.3% in 2001. The rates then decreased again to 3.9% in 2003.

**Figure 15.2. Percent of persons of all ages who experienced an asthma episode in the past 12 months, by age group and sex: United States, 2004**



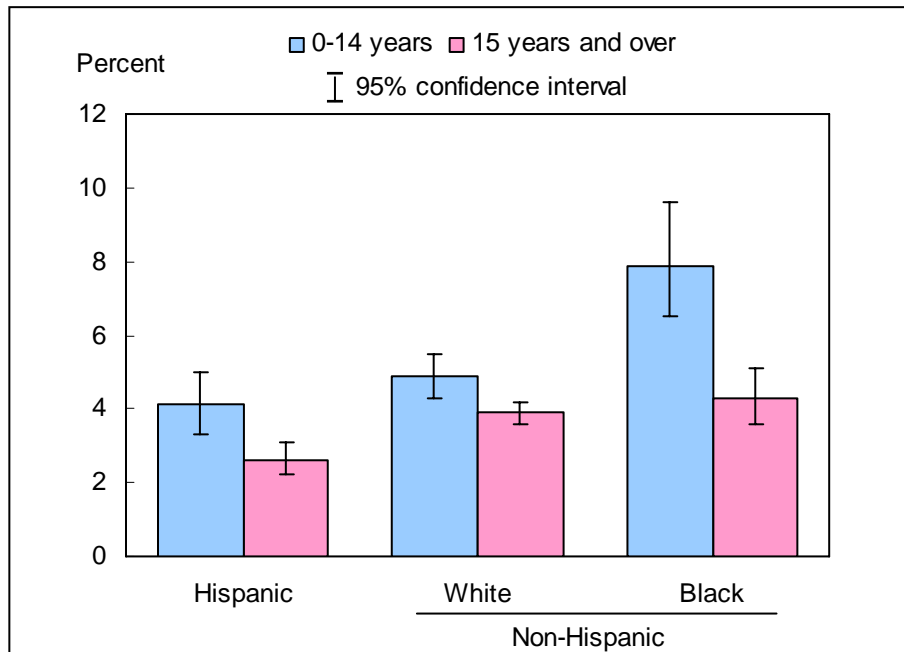
NOTES: Information on an episode of asthma or asthma attack during the past 12 months is self-reported by adults aged 18 years and over. For children under age 18 years, the information is collected from an adult family member, usually a parent, who is knowledgeable about the child's health. The analyses excluded 78 persons (0.2%) with unknown asthma episode status.

DATA SOURCE: Sample Adult and Sample Child Core components of the 2004 National Health Interview Survey.

- For both sexes combined, the percentage of persons who had an asthma episode in the past 12 months was higher among children under age 15 years than among those aged 15 years and over. This age difference was also seen among males, but not among females.

- For children under age 15 years, the percentage of persons who had an asthma episode in the past 12 months was higher among boys than among girls. However, for persons 15 years and over, the percentage was higher among women than among men.

**Figure 15.3. Sex-adjusted percent of persons of all ages who experienced an asthma episode in the past 12 months, by age group and race/ethnicity: United States, 2004**

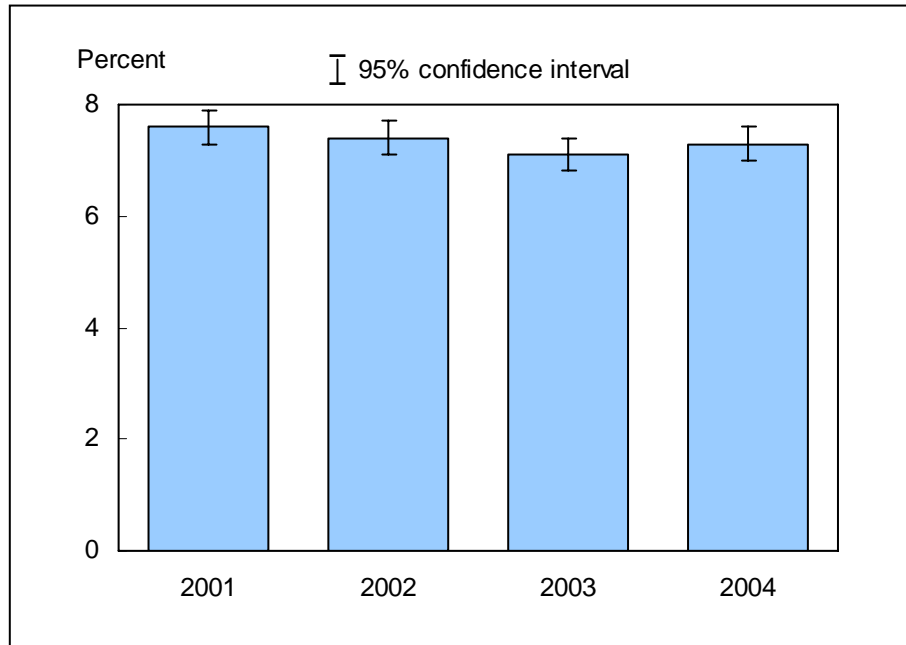


NOTES: Information on an episode of asthma or asthma attack during the past 12 months is self-reported by adults aged 18 years and over. For children under age 18 years, the information is collected from an adult family member, usually a parent, who is knowledgeable about the child's health. The analyses excluded 78 persons (0.2%) with unknown asthma episode status.

DATA SOURCE: Sample Adult and Sample Child Core components of the 2004 National Health Interview Survey.

- For children under age 15 years, the sex-adjusted percentage of persons who had an asthma episode in the past 12 months was higher among non-Hispanic black children than among Hispanic or non-Hispanic white children.
- Among the six age-specific race/ethnicity groups, the sex-adjusted percentage of persons who had an asthma episode in the past 12 months was highest among non-Hispanic black children under age 15 years (7.9%).

**Figure 15.4. Prevalence of current asthma among persons of all ages: United States, 2001-2004**



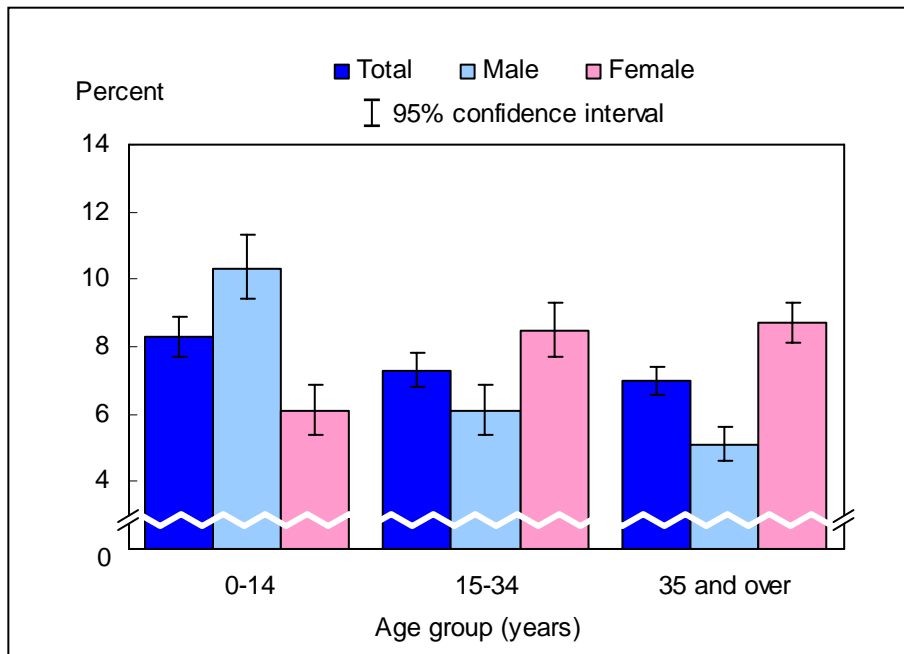
NOTES: Information on current asthma is self-reported by adults aged 18 years and over. For children under age 18 years, the information is collected from an adult family member, usually a parent, who is knowledgeable about the child's health. The analyses excluded people with unknown current asthma status (about 0.3% of respondents each year). Beginning with the 2003 data, the National Health Interview Survey transitioned to weights derived from the 2000 census. In this Early Release, estimates for 2001-02 were recalculated using weights derived from the 2000 census. See "About This Release" and table III in the Appendix for more details.

DATA SOURCE: Combined Sample Adult and Sample Child Core components of the 2001-2004 National Health Interview Surveys.

- In 2004, 7.3% (95% confidence interval = 7.0%-7.6%) of persons of all ages currently had asthma, which was higher than, but not significantly different from, the 2003 estimate of 7.1%.
- The prevalence of current asthma among persons of all ages decreased from 7.6% in 2001 to 7.1% in 2003.



**Figure 15.5. Prevalence of current asthma among persons of all ages, by age group and sex: United States, 2004**

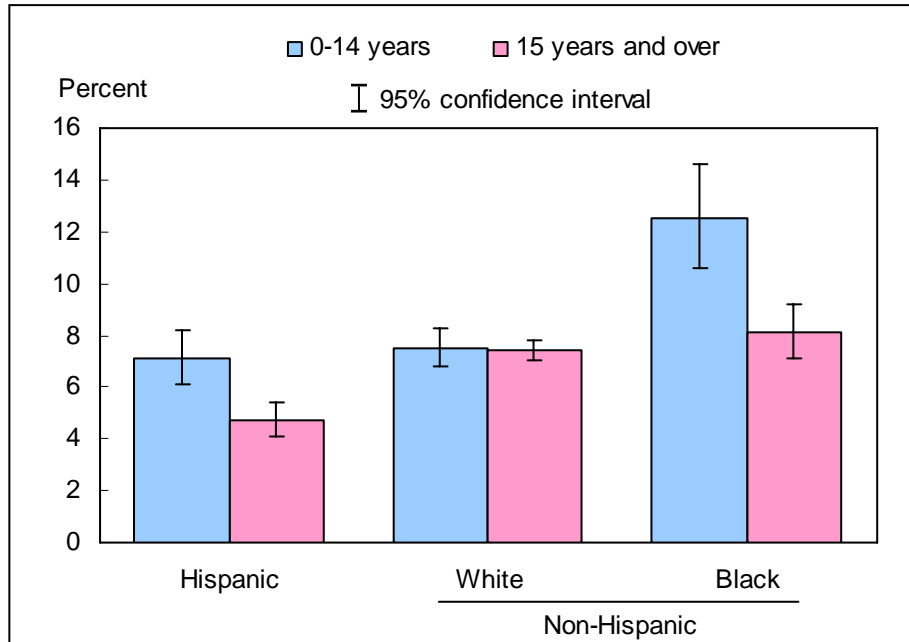


NOTES: Information on current asthma is self-reported by adults aged 18 years and over. For children under age 18 years, the information is collected from an adult family member, usually a parent, who is knowledgeable about the child's health. The analyses excluded 97 persons (0.2%) with unknown current asthma status.

DATA SOURCE: Sample Adult and Sample Child Core components of the 2004 National Health Interview Survey.

- For both sexes combined, the prevalence of current asthma was higher among children 0-14 years old than among persons 15 years and over. This pattern was seen among males but not among females.
- For children under age 15 years, the prevalence of current asthma was higher among boys than among girls. However, among those 15 years and over, the prevalence of current asthma was higher among women than among men.

**Figure 15.6. Sex-adjusted prevalence of current asthma among persons of all ages, by age group and race/ethnicity: United States, 2004**



NOTES: Information on current asthma is self-reported by adults aged 18 years and over. For children under age 18 years, the information is collected from an adult family member, usually a parent, who is knowledgeable about the child's health. The analyses excluded 97 persons (0.2%) with unknown current asthma status.

DATA SOURCE: Sample Adult and Sample Child Core components of the 2004 National Health Interview Survey.

- For children under age 15 years, the sex-adjusted prevalence of current asthma was higher among non-Hispanic black children than among Hispanic or non-Hispanic white children.
- Among the six age-specific race/ethnicity groups, the sex-adjusted prevalence of current asthma was highest among non-Hispanic black children under age 15 years (12.5%).

## Data tables for figures 15.1-15.6:

Data for figure 15.1. Percent of persons of all ages who experienced an asthma episode in the past 12 months: United States, 1997–2004

Year	Percent (95% confidence interval)	
	Crude <sup>1</sup>	Age-adjusted <sup>2</sup>
1997	4.2 (4.0-4.4)	4.2 (3.9-4.4)
1998	4.0 (3.7-4.2)	3.9 (3.7-4.2)
1999	3.9 (3.6-4.1)	3.9 (3.6-4.1)
2000	4.0 (3.8-4.2)	4.0 (3.8-4.2)
2001	4.3 (4.1-4.6)	4.3 (4.1-4.5)
2002	4.3 (4.0-4.5)	4.3 (4.0-4.5)
2003	3.9 (3.7-4.1)	3.9 (3.7-4.1)
2004	4.1 (3.8-4.3)	4.1 (3.8-4.3)

Crude estimates are presented in the figure.

<sup>2</sup>Estimates are age-adjusted to the 2000 projected U.S. standard population using three age groups: 10-14 years, 15-34 years, and 35 years and over.

Data table for figure 15.2. Percent of persons of all ages who experienced an asthma episode in the past 12 months, by age group and sex: United States, 2004

Age and sex	Percent	95% confidence interval
<b>0-14 years</b>		
Total	5.3	4.8-5.8
Male	6.7	6.0-7.6
Female	3.7	3.1-4.4
<b>15-34 years</b>		
Total	3.9	3.4-4.3
Male	3.3	2.8-4.0
Female	4.4	3.8-5.1
<b>35 years and over</b>		
Total	3.7	3.4-4.0
Male	2.5	2.2-2.9
Female	4.7	4.3-5.2
<b>All ages: crude<sup>1</sup></b>		
Total	4.1	3.8-4.3
Male	3.7	3.4-4.0
Female	4.4	4.1-4.8
<b>All ages: age-adjusted<sup>2</sup></b>		
Total	4.1	3.8-4.3
Male	3.6	3.3-4.0
Female	4.4	4.1-4.8

<sup>1</sup>Crude estimates are presented in the figure.

<sup>2</sup>Estimates are age-adjusted to the 2000 projected U.S. standard population using three age groups: 0-14 years, 15-34 years, and 35 years and over.

**Data table for figure 15.3. Sex-adjusted percent of persons of all ages who experienced an asthma episode in the past 12 months, by age group and race/ethnicity: United States, 2004**

Age and race/ethnicity	Percent <sup>1</sup>	95% confidence interval
<b>0-14 years</b>		
Hispanic or Latino	4.1	3.3-5.0
Not Hispanic or Latino:		
White, single race	4.9	4.3-5.5
Black, single race	7.9	6.5-9.6
<b>15 years and over</b>		
Hispanic or Latino	2.6	2.2-3.1
Not Hispanic or Latino:		
White, single race	3.9	3.6-4.2
Black, single race	4.3	3.6-5.1

<sup>1</sup>Estimates are sex-adjusted to the 2000 projected U.S. standard population.

**Data for figure 15.4. Prevalence of current asthma among persons of all ages: United States, 2001–2004**

Year	Percent (95% confidence interval)	
	Crude <sup>1</sup>	Age-adjusted <sup>2</sup>
2001	7.6 (7.3-7.9)	7.6 (7.3-7.9)
2002	7.4 (7.1-7.7)	7.4 (7.1-7.7)
2003	7.1 (6.8-7.4)	7.1 (6.8-7.4)
2004	7.3 (7.0-7.6)	7.3 (7.1-7.7)

<sup>1</sup>Crude estimates are presented in the figure.

<sup>2</sup>Estimates are age-adjusted to the 2000 projected U.S. standard population using three age groups: 0-14 years, 15-34 years, and 35 years and over.

**Data table for figure 15.5. Prevalence of current asthma among persons of all ages, by age group and sex: United States, 2004**

Age and sex	Percent	95% confidence interval
<b>0-14 years</b>		
Total	8.3	7.7-8.9
Male	10.3	9.4-11.3
Female	6.1	5.4-6.9
<b>15-34 years</b>		
Total	7.3	6.8-7.8
Male	6.1	5.4-6.9
Female	8.5	7.7-9.3
<b>35 years and over</b>		
Total	7.0	6.6-7.4
Male	5.1	4.6-5.6
Female	8.7	8.1-9.3
<b>All ages: crude<sup>1</sup></b>		
Total	7.3	7.0-7.6
Male	6.5	6.1-7.0
Female	8.1	7.7-8.5
<b>All ages: age-adjusted<sup>2</sup></b>		
Total	7.3	7.1-7.7
Male	6.5	6.1-6.9
Female	8.1	7.7-8.5

<sup>1</sup>Crude estimates are presented in the figure.

<sup>2</sup>Estimates are age-adjusted to the 2000 projected U.S. standard population using three age groups: 0-14 years, 15-34 years, and 35 years and over.

**Data table for figure 15.6. Sex-adjusted prevalence of current asthma among persons of all ages, by age group and race/ethnicity: United States, 2004**

Age and race/ethnicity	Percent <sup>1</sup>	95% confidence interval
<b>0-14 years</b>		
Hispanic or Latino	7.1	6.1-8.2
Not Hispanic or Latino:		
White, single race	7.5	6.8-8.3
Black, single race	12.5	10.6-14.6
<b>15 years and over</b>		
Hispanic or Latino	4.7	4.1-5.4
Not Hispanic or Latino:		
White, single race	7.4	7.0-7.8
Black, single race	8.1	7.1-9.2

<sup>1</sup>Estimates are sex-adjusted to the 2000 projected U.S. standard population.

---

## References

1. U.S. Department of Health and Human Services. Healthy People 2010: Understanding and improving health. Washington: U.S. Department of Health and Human Services. Washington. 2000.
2. Office of Management and Budget. Revisions to the standards for the classification of Federal data on race and ethnicity. Executive Office of the President, Office of Management and Budget (OMB), Office of Information and Regulatory Affairs. Available at <http://www.whitehouse.gov/omb/fedreg>. Published on October 30, 1997 and accessed on September 11, 2003.
3. National Center for Health Statistics. Health, United States, 2003. Hyattsville, MD: 2003.
4. Klein RJ, Schoenborn CA. Age adjustment using the 2000 projected U.S. population. Healthy People Statistical Notes, no 20. Hyattsville, MD. National Center for Health Statistics. 2001.
5. National Center for Health Statistics (assorted authors). Early release of selected estimates based on data from the National Health Interview Survey. National Center for Health Statistics. Available at: <http://www.cdc.gov/nchs/nhis.htm>. Series of Internet-only reports released approximately quarterly beginning in April 2001.
6. Centers for Disease Control and Prevention. Interim Influenza Vaccination Recommendations, 2004--05 Influenza Season. MMWR 2004; 53(39):923-924.
7. Centers for Disease Control and Prevention. Notice to readers: Updated recommendations from the advisory committee on immunization practices in response to delays in supply of influenza vaccine for the 2000-01 season. MMWR 2000; 49(39):888-92.
8. Centers for Disease Control and Prevention. Notice to readers: Delayed influenza vaccine availability for 2001-02 season and supplemental recommendations of the advisory committee on immunization practices. MMWR 2001; 50(27):582-5.
9. Kessler RC, Barker PR, Colpe LJ, et al. Screening for serious mental illness in the general population. Arch Gen Psychiatry. 60:184-9. 2003.

**Table I. The 2004 National Health Interview Survey questions used to define selected health measures**

**Lack of health insurance and type of coverage<sup>1</sup>**

FHI.050<sup>2</sup> **Field Representative: SHOW FLASHCARD F10**  
 {Are you/Is anyone} covered by any kind of health insurance or some other kind of health care plan?

**Field Representative: READ IF NECESSARY: INCLUDE HEALTH INSURANCE OBTAINED THROUGH EMPLOYMENT OR PURCHASED DIRECTLY AS WELL AS GOVERNMENT PROGRAMS LIKE MEDICARE AND MEDICAID THAT PROVIDE MEDICAL CARE OR HELP PAY MEDICAL BILLS.**

- (1) Yes
- (2) No
- (7) Refused
- (9) Don't know

FHI.070 What kind of health insurance or health care coverage {do/does} {you/subject name} have? INCLUDE those that pay for only one type of service (nursing home care, accidents, or dental care), exclude private plans that only provide extra cash while hospitalized.

**Field Representative: PLEASE REFER TO FLASHCARDS F12 AND F13 FOR YOUR STATE**

- (01) Private health insurance
- (02) Medicare
- (03) Medi-Gap
- (04) Medicaid
- (05) SCHIP (CHIP/Children's Health Insurance Program)
- (06) Military health care (TRICARE/VA/CHAMP-VA)
- (07) Indian Health Service
- (08) State-sponsored health plan
- (09) Other government program
- (10) Single service plan (e.g. dental, vision, prescriptions)
- (11) No coverage of any type
- (97) Refused
- (99) Don't know

FHI.072 People covered by Medicare have a card that looks like this. {Are/Is} {person} covered by Medicare?

- (1) Yes
- (2) No
- (7) Refused
- (9) Don't know

FHI.073 There is a program called Medicaid that pays for health care for persons in need. In this state it is also called [state name]. {Are/Is} {person} covered by Medicaid?

- (1) Yes
- (2) No
- (7) Refused

(9) Don't know

### Usual place to go for medical care

AAU.020 Is there a place that you USUALLY go to when you are sick or need advice about your health?

- (1) Yes
- (2) There is NO place
- (3) There is MORE THAN ONE place
- (7) Refused
- (9) Don't know

AAU.030 What kind of place is it - a clinic, doctor's office, emergency room, or some other place?

- (1) Clinic or health center
- (2) Doctor's office or HMO
- (3) Hospital emergency room
- (4) Hospital outpatient department
- (5) Some other place
- (6) Doesn't go to one place most often
- (7) Refused
- (9) Don't know

### Obtaining needed medical care

FAU.040 DURING THE PAST 12 MONTHS, was there any time when {you/someone in the family} needed medical care, but did not get it because {you/the family} couldn't afford it?

- (1) Yes
- (2) No
- (7) Refused
- (9) Don't know

### Influenza shot

AAU.310 DURING THE PAST 12 MONTHS, have you had a flu shot? A flu shot is usually given in the fall and protects against influenza for the flu season.

- (1) Yes
- (2) No
- (7) Refused
- (9) Don't know

### Pneumococcal vaccination

AAU.320 Have you EVER had a pneumonia shot? This shot is usually given only once or twice in a person's lifetime and is different from the flu shot. It is also called the pneumococcal vaccine.

- (1) Yes
- (2) No
- (7) Refused
- (9) Don't know



## Obesity

AHB.190 How tall are you without shoes?

- (2-7) 2-7 feet
- (0-11) 0-11 Inches
- (97) Refused
- (99) Don't know

FT Feet \_\_\_\_\_  
IN Inches \_\_\_\_\_

AHB.200 How much do you weigh without shoes?

- (50-500) 50-500 pounds
- (997) Refused
- (999) Don't know

## Leisure-time physical activity

The next questions are about physical activities (exercises, sports, physically active hobbies...) that you may do in your LEISURE time.

AHB.110 How often do you do LIGHT OR MODERATE activities for AT LEAST 10 MINUTES that cause ONLY LIGHT sweating or a SLIGHT to MODERATE increase in breathing or heart rate?

**Field Representative: IF NECESSARY, PROMPT WITH: HOW MANY TIMES PER DAY, PER WEEK, PER MONTH, OR PER YEAR DO YOU DO THESE ACTIVITIES?**

- @NO times per
- (0) Never
  - (1-995) 1-995
  - (996) Unable to do this type activity
  - (997) Refused
  - (999) Don't know

- @TP time period
- (1) Day
  - (2) Week
  - (3) Month
  - (4) Year

AHB.120 About how long do you do these light or moderate activities each time?

@NO number  
(1-995) 1-995  
(997) Refused  
(999) Don't know

@TP time period  
(1) Minutes  
(2) Hours  
(7) Refused  
(9) Don't know

AHB.090 How often do you do VIGOROUS activities for AT LEAST 10 MINUTES that cause HEAVY sweating or LARGE increases in breathing or heart rate?

**Field Representative: IF NECESSARY, PROMPT WITH: HOW MANY TIMES PER DAY, PER WEEK, PER MONTH, OR PER YEAR DO YOU DO THESE ACTIVITIES?**

@NO times per  
(0) Never  
(1-995) 1-995  
(996) Unable to do this type activity  
(997) Refused  
(999) Don't know

@TP time period  
(1) Day  
(2) Week  
(3) Month  
(4) Year

AHB.100 About how long do you do these vigorous activities each time?

@NO number  
(1-995) 1-995  
(997) Refused  
(999) Don't know

@TP time period  
(1) Minutes  
(2) Hours  
(7) Refused  
(9) Don't know

---

---

### Current smoking

AHB.010 Have you smoked at least 100 cigarettes in your ENTIRE LIFE?

- (1) Yes
- (2) No
- (7) Refused
- (9) Don't know

AHB.030 Do you NOW smoke cigarettes every day, some days or not at all?

- (1) Every day
- (2) Some days
- (3) Not at all
- (7) Refused
- (9) Don't know

### Alcohol consumption

AHB.150 In your ENTIRE LIFE, have you had at least 12 drinks of any type of alcoholic beverage?

- (1) Yes
- (2) No
- (7) Refused
- (9) Don't know

AHB.180 In the PAST YEAR, on how many DAYS did you have 5 or more drinks of any alcoholic beverage?

- (0) Never
- (1-365) 1-365
- (997) Refused
- (999) Don't know

### HIV testing

ADS.040 Except for tests you may have had as part of blood donations, have you ever been tested for HIV?

- (1) Yes
- (2) No
- (7) Refused
- (9) Don't know

---

---

### General health status

FHS.500 Would you say {subject name's} health in general is excellent, very good, good, fair, or poor?

- (1) Excellent
- (2) Very good
- (3) Good
- (4) Fair
- (5) Poor
- (7) Refused
- (9) Don't know

### Personal care needs

FHS.070 Because of a physical, mental, or emotional problem, {do/does} {you/anyone in the family} need the help of other persons with PERSONAL CARE NEEDS, such as eating, bathing, dressing, or getting around inside this home?

- (1) Yes
- (2) No
- (7) Refused
- (9) Don't know

### Serious psychological distress

ACN.471 During the PAST 30 DAYS, how often did you feel...

- ...So sad that nothing could cheer you up?
- ...Nervous?
- ...Restless or fidgety?
- ...Hopeless?
- ...That everything was an effort?
- ...Worthless?

- (1) ALL of the time
- (2) MOST of the time
- (3) SOME of the time
- (4) A LITTLE of the time
- (5) NONE of the time
- (7) Refused
- (9) Don't know

### Diagnosed diabetes

ACN.160 Other than during pregnancy, have you EVER been told by a doctor or health professional that you have diabetes or sugar diabetes?

- (1) Yes
- (2) No
- (3) Borderline
- (7) Refused
- (9) Don't know

---

**Asthma episodes**

ACN.090 DURING THE PAST 12 MONTHS, have you had an episode of asthma or an asthma attack?

- (1) Yes
- (2) No
- (7) Refused
- (9) Don't know

ACN.085 Do you still have asthma?

- (1) Yes
- (2) No
- (7) Refused
- (9) Don't know

---

<sup>1</sup>Information from follow-up questions such as plan name(s) was used to reassign insurance status and type of coverage to avoid misclassification.

<sup>2</sup>Alphanumeric codes refer directly to the question on the 2003 NHIS that was used to define the health measure.



**Table II. Number and percent of uninsured persons with public coverage and private coverage based on the 1990 and 2000 census population estimates, by age group: United States, 2000-2002**

Health insurance coverage and age group	2000		2001		2002	
	1990-based <sup>1</sup>	2000-based <sup>2</sup>	1990-based <sup>1</sup>	2000-based <sup>2</sup>	1990-based <sup>1</sup>	2000-based <sup>2</sup>
<b>Number of uninsured in millions</b>						
All ages	40.4	41.3	39.1	40.2	40.4	41.5
Under 65 years	39.9	40.8	38.7	39.8	40.0	41.1
18-64 years	31.2	32.0	30.9	31.9	32.4	33.5
Under 18 years	8.8	8.9	7.8	7.9	7.6	7.6
<b>Percent (95% confidence interval)</b>						
<b>Uninsured</b>						
All ages	14.7 (14.3-15.1)	14.9 (14.5-15.3)	14.1 (13.7-14.6)	14.3 (13.8-14.8)	14.5 (14.1-14.9)	14.7 (14.3-15.1)
Under 65 years						
Crude	16.6 (16.1-17.1)	16.8 (16.3-17.2)	15.9 (15.4-16.4)	16.2 (15.7-16.7)	16.3 (15.8-16.7)	16.5 (16.0-16.9)
Age-adjusted	16.6 (16.1-17.1)	16.8 (16.3-17.3)	16.0 (15.5-16.5)	16.2 (15.7-16.7)	16.4 (15.9-16.9)	16.6 (16.1-17.1)
18-64 years	18.4 (17.9-18.9)	18.7 (18.1-19.2)	18.1 (17.5-18.6)	18.3 (17.8-18.8)	18.8 (18.3-19.3)	19.1 (18.6-19.6)
Under 18 years	12.2 (11.6-12.8)	12.3 (11.7-12.9)	10.8 (10.1-11.5)	11.0 (10.3-11.7)	10.4 (9.8-11.0)	10.5 (9.9-11.1)
<b>Public</b>						
Under 65 years	12.9 (12.4-13.4)	12.9 (12.4-13.4)	13.6 (13.1-14.1)	13.6 (13.1-14.1)	15.2 (14.6-15.8)	15.2 (14.6-15.8)
18-64 years	9.0 (8.7-9.4)	9.1 (8.7-9.4)	9.4 (9.0-9.8)	9.4 (9.0-9.8)	10.2 (9.8-10.7)	10.3 (9.9-10.7)
Under 18 years	21.8 (20.8-22.8)	22.0 (21.0-23.0)	23.4 (22.4-24.3)	23.6 (22.6-24.5)	26.8 (25.7-27.9)	27.1 (26.0-28.2)
<b>Private</b>						
Under 65 years	72.0 (71.4-72.7)	71.8 (71.1-72.5)	71.9 (71.2-72.6)	71.6 (70.9-72.3)	70.1 (69.3-70.9)	69.8 (69.0-70.6)
18-64 years	74.0 (73.4-74.6)	73.8 (73.2-74.4)	73.9 (73.3-74.6)	73.7 (73.1-74.4)	72.6 (71.9-73.2)	72.3 (71.6-72.9)
Under 18 years	67.5 (66.4-68.5)	67.1 (66.1-68.2)	67.1 (66.0-68.2)	66.7 (66.4-68.6)	64.3 (63.1-65.5)	63.9 (62.7-65.1)

<sup>1</sup>The estimates are calculated based on data with sample weights derived from the 1990 census.

<sup>2</sup>The estimates are calculated based on data with sample weights derived from the 2000 census.

**Table III. Selected estimates using National Health Interview Survey weights based on the 1990 and 2000 census population estimates: United States, 2000-2002**

Indicator	2000		2001		2002	
	1990 based <sup>1</sup>	2000 based <sup>2</sup>	1990 based <sup>1</sup>	2000 based <sup>2</sup>	1990 based <sup>1</sup>	2000 based <sup>2</sup>
<b>Percent (95% confidence interval)</b>						
With a usual place to go for medical care	87.1 (86.7-87.5)	87.0 (86.5-87.4)	88.2 (87.7-88.6)	88.0 (87.6-88.5)	87.8 (87.3-88.2)	87.6 (87.1-88.0)
Failed to obtain needed care due to cost	4.5 (4.3-4.7)	4.5 (4.3-4.7)	4.7 (4.5-4.9)	4.7 (4.5-4.9)	4.7 (4.5-4.9)	4.7 (4.5-4.9)
Had influenza shot in the past year	64.3 (62.9-65.7)	64.4 (63.0-65.9)	63.0 (61.6-64.4)	63.1 (61.7-64.5)	65.6 (64.1-67.0)	65.7 (64.3-67.2)
Had pneumococcal vaccination in the past year	52.9 (51.3-54.5)	53.1 (51.5-54.7)	53.8 (52.2-55.4)	54.0 (52.4-55.6)	55.7 (54.2-57.2)	56.0 (54.5-57.5)
With obesity	21.8 (21.2-22.4)	21.8 (21.2-22.4)	23.0 (22.4-23.5)	23.0 (22.4-23.6)	23.9 (23.3-24.6)	23.9 (23.3-24.6)
Engaged in regular leisure-time physical activity	32.0 (31.3-32.7)	31.9 (31.2-32.6)	32.1 (31.3-32.8)	32.1 (31.3-32.8)	32.0 (31.2-32.8)	31.9 (31.1-32.7)
Current smoking	23.3 (22.7-23.9)	23.2 (22.5-23.8)	22.8 (22.2-23.4)	22.7 (22.1-23.3)	22.5 (21.9-23.1)	22.4 (21.7-23.0)
Had 5 or more drinks in one day at least once in the past year	19.3 (18.7-20.0)	19.2 (18.6-19.9)	20.1 (19.5-20.7)	20.0 (19.4-20.6)	19.9 (19.3-20.6)	19.9 (19.2-20.5)
Ever had HIV <sup>3</sup> test	32.2 (31.5-32.9)	32.1 (31.4-32.8)	33.3 (32.6-34.0)	33.2 (32.5-34.0)	34.5 (33.8-35.3)	34.5 (33.8-35.2)
With excellent or very good health status	68.4 (67.9-69.0)	68.3 (67.7-68.8)	68.6 (68.1-69.2)	68.4 (67.9-69.0)	67.6 (67.0-68.2)	67.4 (66.8-68.0)
With need for personal care	6.3 (5.9-6.8)	6.4 (5.9-6.9)	6.5 (6.0-7.0)	6.5 (6.0-7.0)	6.2 (5.6-6.7)	6.2 (5.7-6.7)
Serious psychological distress	2.7 (2.5-2.9)	2.7 (2.5-2.9)	3.2 (2.9-3.4)	3.2 (2.9-3.4)	3.0 (2.8-3.3)	3.0 (2.8-3.2)
Diagnosed diabetes	5.9 (5.6-6.2)	5.9 (5.6-6.2)	6.4 (6.1-6.7)	6.4 (6.1-6.7)	6.5 (6.2-6.8)	6.5 (6.2-6.8)
Asthma episodes in the past year	40.1 (37.9-42.4)	40.0 (37.7-42.2)	43.4 (41.0-45.8)	43.2 (40.8-45.5)	42.8 (40.4-45.2)	42.6 (40.2-44.9)

<sup>1</sup>The estimates are calculated based on data with sample weights derived from the 1990 census.

<sup>2</sup>The estimates are calculated based on data with sample weights derived from the 2000 census.

<sup>3</sup>HIV is human immunodeficiency virus.