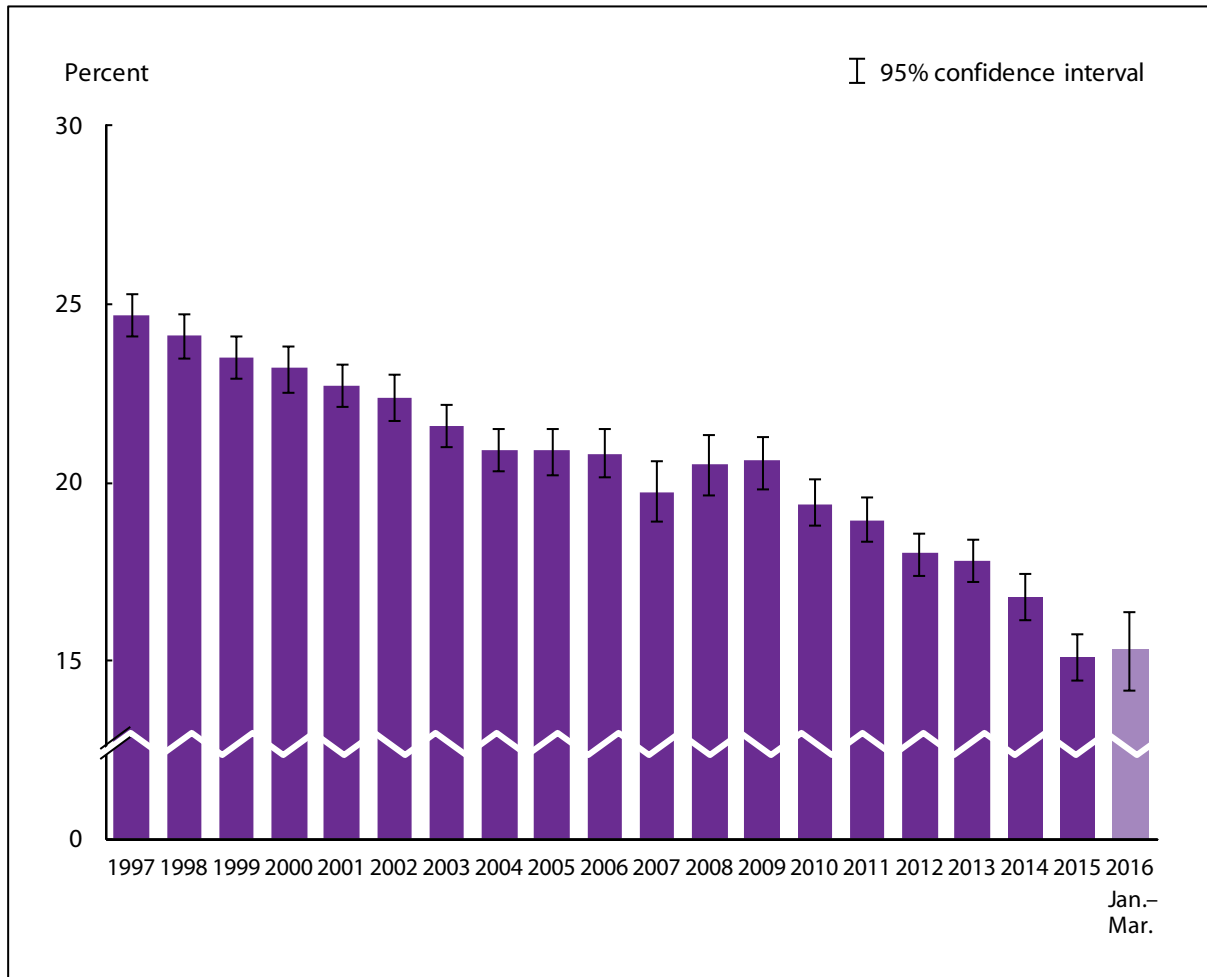


## Current smoking

**Figure 8.1. Prevalence of current cigarette smoking among adults aged 18 and over: United States, 1997–March 2016**

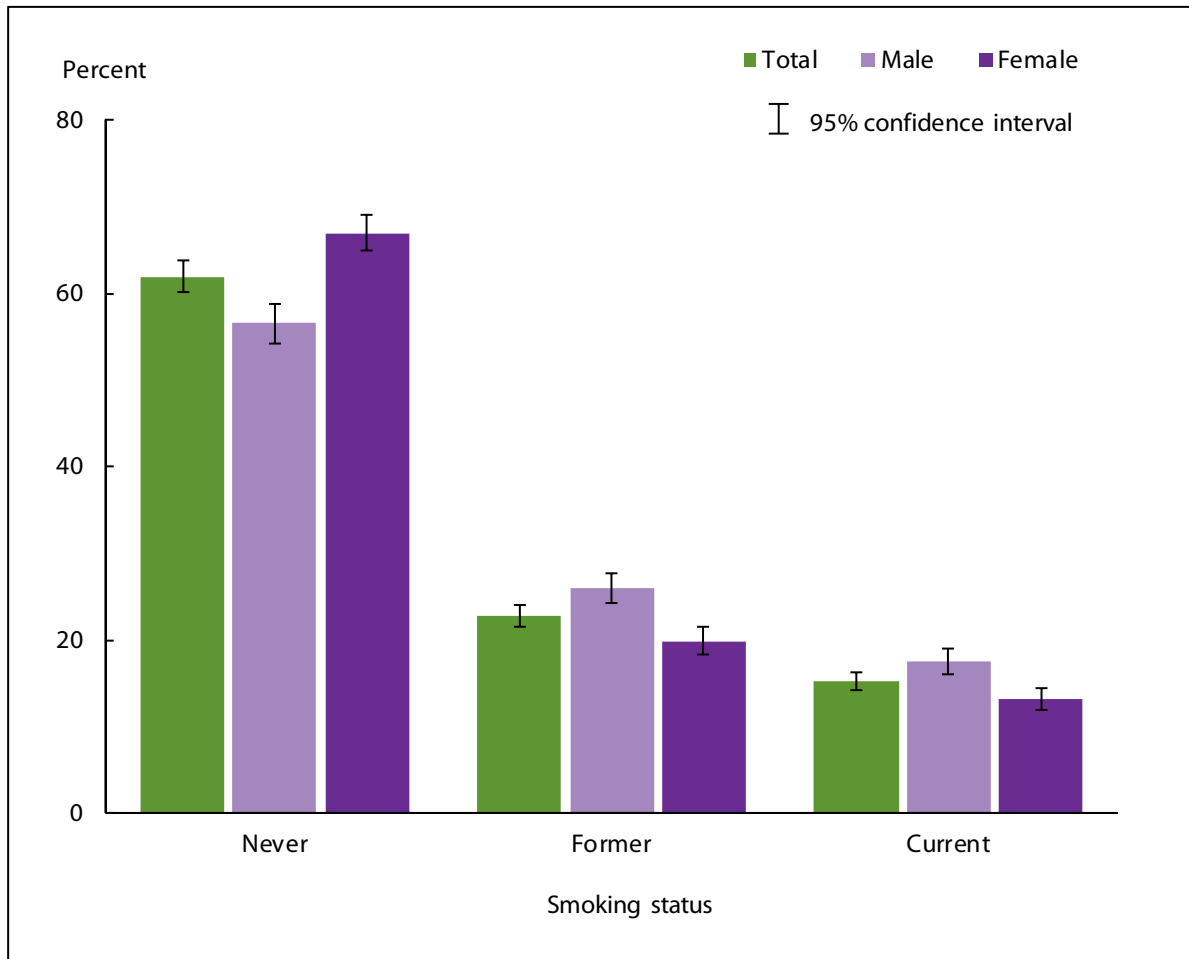


NOTES: Data are based on household interviews of a sample of the civilian noninstitutionalized population. Current cigarette smokers were defined as those who had smoked more than 100 cigarettes in their lifetime and now smoke every day or some days. The analyses exclude persons with unknown cigarette smoking status (about 2% of respondents each year). See [Technical Notes](#) for more details.

DATA SOURCE: NCHS, National Health Interview Survey, 1997–March 2016, Sample Adult Core component.

- For January–March 2016, the percentage of adults aged 18 and over who were current cigarette smokers was 15.3% (95% confidence interval = 14.18%–16.36%), which was not significantly different from the 2015 estimate of 15.1%.
- The prevalence of current cigarette smoking among U.S. adults declined, from 24.7% in 1997 to 15.3% in January–March 2016.

**Figure 8.2. Percent distribution of cigarette smoking status among adults aged 18 and over, by sex: United States, January–March 2016**

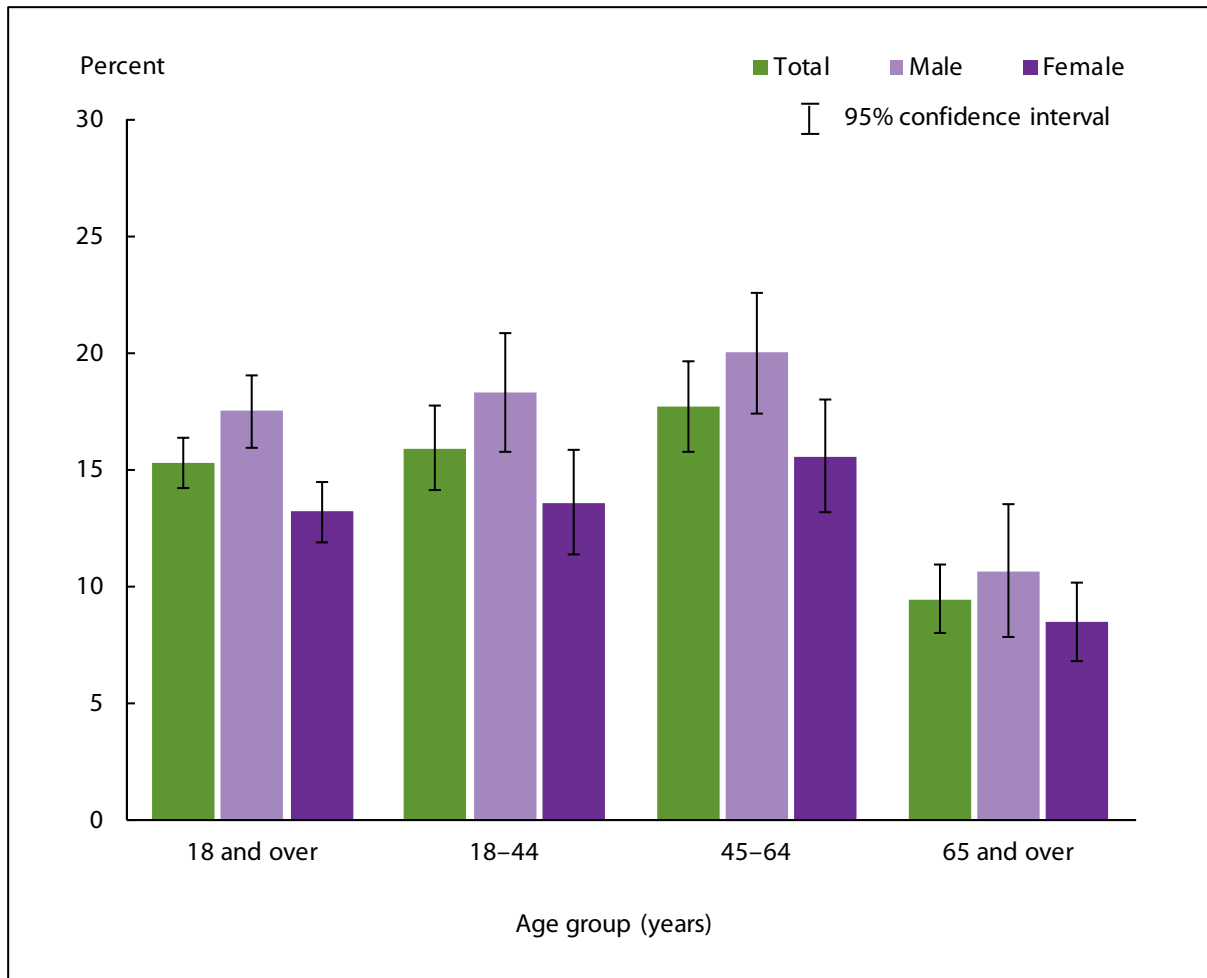


NOTES: Data are based on household interviews of a sample of the civilian noninstitutionalized population. Current cigarette smokers were defined as those who had smoked more than 100 cigarettes in their lifetime and now smoke every day or some days. The analyses exclude the 0.4% of persons with unknown smoking status. See [Technical Notes](#) for more details.

DATA SOURCE: NCHS, National Health Interview Survey, January–March 2016, Sample Adult Core component.

- The percentage of current cigarette smokers was higher for men (17.5%) than for women (13.2%).
- The percentage of former cigarette smokers was higher for men (26.0%) than for women (19.8%).
- The percentage of those who had never smoked cigarettes was higher for women (67.0%) than for men (56.5%).

**Figure 8.3. Prevalence of current cigarette smoking among adults aged 18 and over, by age group and sex: United States, January–March 2016**

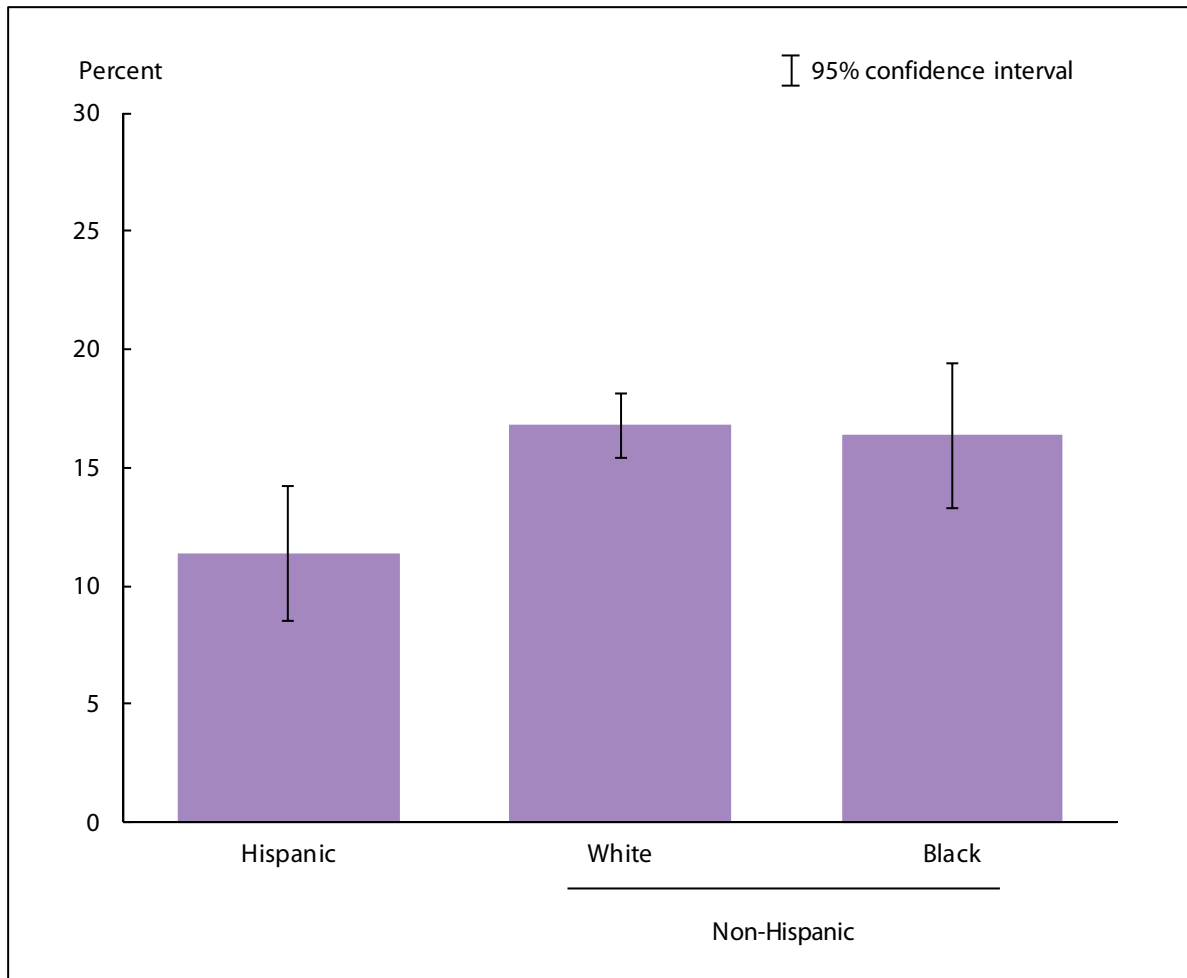


NOTES: Data are based on household interviews of a sample of the civilian noninstitutionalized population. Current cigarette smokers were defined as those who had smoked more than 100 cigarettes in their lifetime and now smoke every day or some days. The analyses exclude the 0.4% of persons with unknown cigarette smoking status. See [Technical Notes](#) for more details.

DATA SOURCE: NCHS, National Health Interview Survey, January–March 2016, Sample Adult Core component.

- For both sexes combined, the percentage of adults who were current cigarette smokers by age group was lower among adults aged 65 and over (9.4%) than among those aged 18–44 (15.9%) and 45–64 (17.7%). This pattern in current cigarette smoking by age group was observed in both men and women.
- For adults aged 18 and over and age groups 18–44 and 45–64, men were more likely than women to be current cigarette smokers.

**Figure 8.4. Age-sex-adjusted prevalence of current cigarette smoking among adults aged 18 and over, by race and ethnicity: United States, January–March 2016**



NOTES: Data are based on household interviews of a sample of the civilian noninstitutionalized population. Current cigarette smokers were defined as those who had smoked more than 100 cigarettes in their lifetime and now smoke every day or some days. The analyses exclude the 0.4% of persons with unknown cigarette smoking status. Estimates are age-sex-adjusted using the projected 2000 U.S. population as the standard population and five age groups: 18–24, 25–34, 35–44, 45–64, and 65 and over. See [Technical Notes](#) for more details.

DATA SOURCE: NCHS, National Health Interview Survey, January–March 2016, Sample Adult Core component.

- The age-sex-adjusted prevalence of current cigarette smoking by race and ethnicity was 11.4% for Hispanic adults, 16.8% for non-Hispanic white adults, and 16.4% for non-Hispanic black adults.
- Hispanic adults were less likely to be current cigarette smokers compared with non-Hispanic black adults and non-Hispanic white adults.

## Data tables for Figures 8.1–8.4:

### Data table for Figure 8.1. Prevalence of current cigarette smoking among adults aged 18 and over: United States, 1997–March 2016

Year	Crude <sup>1</sup> percent (95% confidence interval)	Age-adjusted <sup>2</sup> percent (95% confidence interval)
1997	24.7 (24.1–25.3)	24.6 (24.0–25.1)
1998	24.1 (23.5–24.7)	24.0 (23.4–24.6)
1999	23.5 (22.9–24.1)	23.3 (22.7–24.0)
2000	23.2 (22.5–23.8)	23.1 (22.5–23.7)
2001	22.7 (22.1–23.3)	22.6 (22.0–23.2)
2002	22.4 (21.7–23.0)	22.3 (21.7–22.9)
2003	21.6 (21.0–22.2)	21.5 (20.9–22.1)
2004	20.9 (20.3–21.5)	20.8 (20.2–21.4)
2005	20.9 (20.28–21.52)	20.8 (20.20–21.44)
2006	20.8 (20.14–21.51)	20.8 (20.09–21.43)
2007	19.7 (18.91–20.59)	19.7 (18.83–20.48)
2008	20.5 (19.65–21.30)	20.4 (19.59–21.21)
2009	20.6 (19.83–21.27)	20.6 (19.86–21.28)
2010	19.4 (18.76–20.10)	19.4 (18.71–20.07)
2011	18.9 (18.32–19.55)	18.9 (18.29–19.53)
2012	18.0 (17.40–18.56)	18.1 (17.49–18.66)
2013	17.8 (17.21–18.41)	17.9 (17.29–18.53)
2014	16.8 (16.14–17.45)	17.0 (16.37–17.71)
2015	15.1 (14.46–15.72)	15.3 (14.63–15.94)
January–March 2016	15.3 (14.18–16.36)	15.4 (14.28–16.58)

<sup>1</sup>Crude estimates are presented.

<sup>2</sup>Estimates for this Healthy People 2020 Leading Health Indicator are age-adjusted using the projected 2000 U.S. population as the standard population and five age groups: 18–24, 25–34, 35–44, 45–64, and 65 and over.

NOTES: Data are based on household interviews of a sample of the civilian noninstitutionalized population. Beginning with 2012 data, the National Health Interview Survey transitioned to weights derived from the 2010 census. For 2003–2011 data, weights were derived from the 2000 census. In this Early Release, estimates for 2000–2002 were recalculated using weights derived from the 2000 census. For 1997–1999 data, weights were derived from the 1990 census. See [Technical Notes](#) for more details.

DATA SOURCE: NCHS, National Health Interview Survey, 1997–March 2016, Sample Adult Core component.

**Data table for Figure 8.2. Percent distribution of cigarette smoking status among adults aged 18 and over, by sex: United States, January–March 2016**

Smoking status and sex	Percent	95% confidence interval
Never, total	61.9	60.13–63.69
Never, male	56.5	54.22–58.74
Never, female	67.0	64.92–69.02
Former, total	22.8	21.59–24.04
Former, male	26.0	24.31–27.72
Former, female	19.8	18.21–21.47
Current, total	15.3	14.18–16.36
Current, male	17.5	15.95–19.06
Current, female	13.2	11.90–14.49

NOTE: Data are based on household interviews of a sample of the civilian noninstitutionalized population.

DATA SOURCE: NCHS, National Health Interview Survey, January–March 2016, Sample Adult Core component.

**Data table for Figure 8.3. Prevalence of current cigarette smoking among adults aged 18 and over, by age group and sex: United States, January–March 2016**

Age (years) and sex	Percent	95% confidence interval
18–44, total	15.9	14.15–17.69
18–44, male	18.3	15.72–20.85
18–44, female	13.6	11.32–15.85
45–64, total	17.7	15.75–19.66
45–64, male	20.0	17.41–22.58
45–64, female	15.6	13.16–17.95
65 and over, total	9.4	7.96–10.93
65 and over, male	10.7	7.84–13.49
65 and over, female	8.5	6.82–10.12
18 and over (crude <sup>1</sup> ), total	15.3	14.18–16.36
18 and over (crude <sup>1</sup> ), male	17.5	15.95–19.06
18 and over (crude <sup>1</sup> ), female	13.2	11.90–14.49
18 and over (age-adjusted <sup>2</sup> ), total	15.4	14.28–16.58
18 and over (age-adjusted <sup>2</sup> ), male	17.6	15.94–19.19
18 and over (age-adjusted <sup>2</sup> ), female	13.4	12.05–14.75

<sup>1</sup>Crude estimates are presented.

<sup>2</sup>Estimates for this Healthy People 2020 Leading Health Indicator are age-adjusted using the projected 2000 U.S. population as the standard population and five age groups: 18–24, 25–34, 35–44, 45–64, and 65 and over.

NOTE: Data are based on household interviews of a sample of the civilian noninstitutionalized population.

DATA SOURCE: NCHS, National Health Interview Survey, January–March 2016, Sample Adult Core component.

**Data table for Figure 8.4. Age-sex-adjusted prevalence of current cigarette smoking among adults aged 18 and over, by race and ethnicity: United States, January–March 2016**

Race and ethnicity	Age-sex-adjusted <sup>1</sup> percent (95% confidence interval)	Age-adjusted <sup>2</sup> percent (95% confidence interval)
Hispanic or Latino	11.4 (8.52–14.25)	11.4 (8.55–14.29)
Not Hispanic or Latino, single race, white	16.8 (15.42–18.15)	16.8 (15.42–18.20)
Not Hispanic or Latino, single race, black	16.4 (13.31–19.41)	16.2 (13.31–18.99)

<sup>1</sup>Estimates are age-sex-adjusted using the projected 2000 U.S. population as the standard population and five age groups: 18–24, 25–34, 35–44, 45–64, and 65 and over.

<sup>2</sup>Estimates for this Healthy People 2020 Leading Health Indicator are age-adjusted using the projected 2000 U.S. population as the standard population and five age groups: 18–24, 25–34, 35–44, 45–64, and 65 and over.

NOTE: Data are based on household interviews of a sample of the civilian noninstitutionalized population.

DATA SOURCE: NCHS, National Health Interview Survey, January–March 2016, Sample Adult Core component.