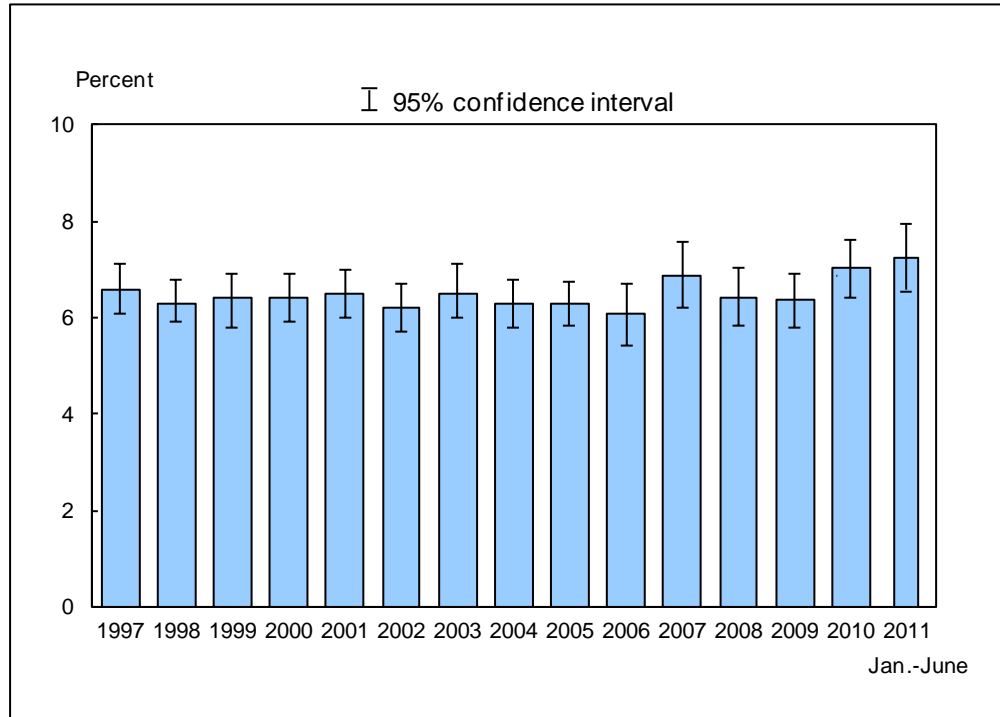


Figure 12.1. Percentage of adults aged 65 years and over who need help with personal care from other persons: United States, 1997–June 2011

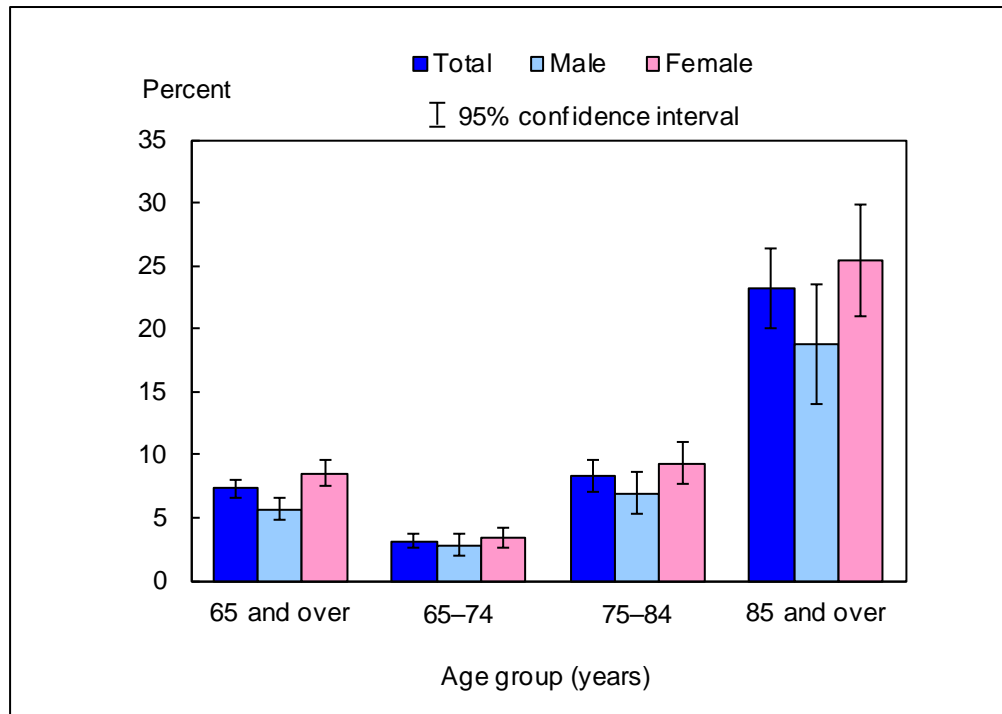


DATA SOURCE: CDC/NCHS, National Health Interview Survey, 1997–June 2011, Family Core component.

- For January–June 2011, 7.3% (95% confidence interval = 6.60%–7.99%) of adults aged 65 and over needed help with personal care from other persons. This estimate was not significantly different from the 2010 estimate of 7.0%.
- The percentage of older adults who needed help with personal care from other persons was lowest in 2006 (6.1%) and highest in January–June 2011 (7.3%).

NOTES: Data are based on household interviews of a sample of the civilian noninstitutionalized population. • Personal care needs, or activities of daily living (ADLs), include eating, bathing, dressing, and getting around inside the person’s home. • The analyses excluded persons with unknown information on personal care needs (about 0.0% of respondents each year). • See "[Technical Notes](#)" for more details.

Figure 12.2. Percentage of adults aged 65 years and over who need help with personal care from other persons, by age group and sex: United States, January–June 2011

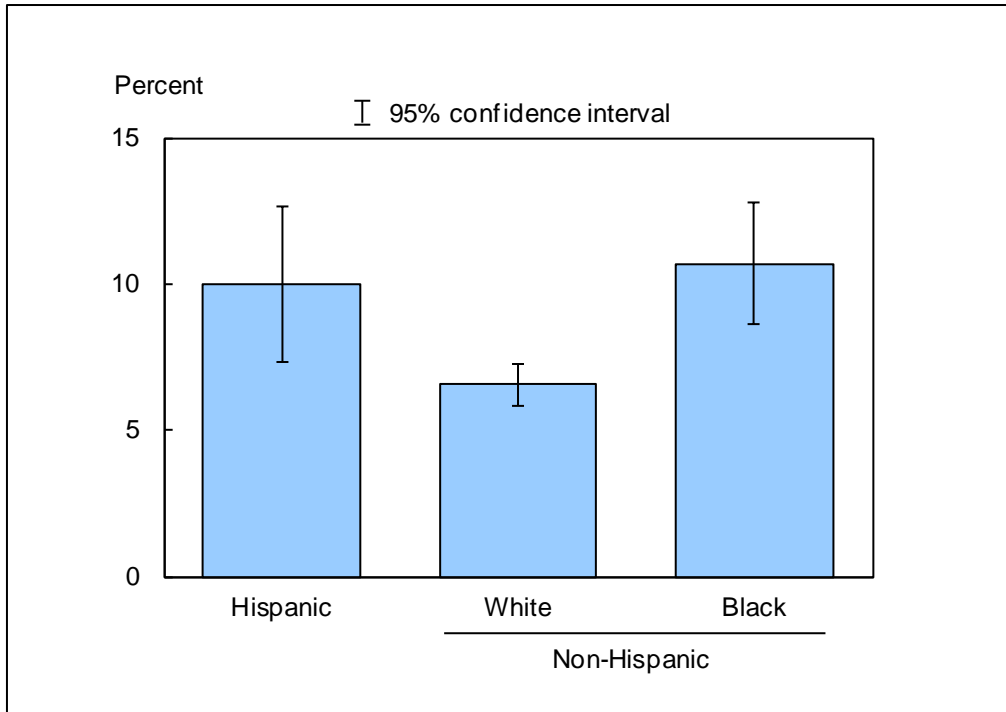


DATA SOURCE: CDC/NCHS, National Health Interview Survey, January–June 2011, Family Core component.

- For both sexes combined, adults aged 85 and over (23.2%) were more than seven times as likely as adults aged 65–74 (3.2%) to need help with personal care from other persons.
- For adults aged 75–84 and 85 and over, women were more likely than men to need help with personal care from other persons.

NOTES: Data are based on household interviews of a sample of the civilian noninstitutionalized population. • Personal care needs, or activities of daily living (ADLs), include eating, bathing, dressing, and getting around inside the person’s home. • See "[Technical Notes](#)" for more details.

Figure 12.3. Age-sex-adjusted percentage of adults aged 65 years and over who need help with personal care from other persons, by race/ethnicity: United States, January–June 2011



DATA SOURCE: CDC/NCHS, National Health Interview Survey, January–June 2011, Family Core component.

- The age-sex-adjusted percentage of persons who needed help with personal care from other persons was 10.0% for Hispanic persons, 6.6% for non-Hispanic white persons, and 10.7% for non-Hispanic black persons.
- Non-Hispanic white persons were less likely to need help with personal care from other persons than Hispanic persons and non-Hispanic black persons.

NOTES: Data are based on household interviews of a sample of the civilian noninstitutionalized population. • Personal care needs, or activities of daily living (ADLs), include eating, bathing, dressing, and getting around inside the person's home. • Estimates are age-sex-adjusted using the projected 2000 U.S. population as the standard population and using three age groups: 65–74, 75–84, and 85 and over. • See "[Technical Notes](#)" for more details.

Data tables for Figures 12.1–12.3:

Data table for Figure 12.1. Percentage of adults aged 65 years and over who need help with personal care from other persons: United States, 1997–June 2011

Year	Percent	95% confidence interval
1997	6.6	6.1-7.1
1998	6.3	5.9-6.8
1999	6.4	5.8-6.9
2000	6.4	5.9-6.9
2001	6.5	6.0-7.0
2002	6.2	5.7-6.7
2003	6.5	6.0-7.1
2004	6.3	5.8-6.8
2005	6.3	5.83-6.76
2006	6.1	5.44-6.69
2007	6.9	6.21-7.58
2008	6.4	5.84-7.03
2009	6.4	5.80-6.92
2010	7.0	6.43-7.62
Jan.–June 2011	7.3	6.60-7.99

NOTES: Data are based on household interviews of a sample of the civilian noninstitutionalized population. Beginning with the 2003 data, the National Health Interview Survey transitioned to weights derived from the 2000 census. In this Early Release, estimates for 2000–2002 were recalculated using weights derived from the 2000 census. See "[Technical Notes](#)" for more details.

DATA SOURCE: CDC/NCHS, National Health Interview Survey, 1997–June 2011, Family Core component.

Data table for Figure 12.2. Percentage of adults aged 65 years and over who need help with personal care from other persons, by age group and sex: United States, January–June 2011

Age (years) and sex	Percent	95% confidence interval
65-74, total	3.2	2.54-3.77
65-74, male	2.8	1.94-3.75
65-74, female	3.4	2.58-4.25
75-84, total	8.3	7.02-9.56
75-84, male	6.9	5.24-8.66
75-84, female	9.3	7.69-10.95
85 and over, total	23.2	20.00-26.35
85 and over, male	18.8	14.07-23.51
85 and over, female	25.5	21.05-29.86
65 and over (crude ¹), total	7.3	6.60-7.99
65 and over (crude ¹), male	5.7	4.84-6.56
65 and over (crude ¹), female	8.5	7.50-9.58
65 and over (age-adjusted ²), total	7.4	6.74-8.12
65 and over (age-adjusted ²), male	6.3	5.32-7.20
65 and over (age-adjusted ²), female	8.2	7.26-9.17

¹Crude estimates are presented in the figure.

²Estimates are age adjusted using the projected 2000 U.S. population as the standard population and using three age groups: 65–74, 75–84, and 85 and over.

NOTE: Data are based on household interviews of a sample of the civilian noninstitutionalized population.

DATA SOURCE: CDC/NCHS, National Health Interview Survey, January–June 2011, Family Core component.

Data table for Figure 12.3. Age-sex-adjusted percentage of adults aged 65 years and over who need help with personal care from other persons, by race/ethnicity: United States, January–June 2011

Race/ethnicity	Percent ¹	95% confidence interval
Hispanic or Latino	10.0	7.34-12.68
Not Hispanic or Latino, single race, white	6.6	5.83-7.29
Not Hispanic or Latino, single race, black	10.7	8.60-12.79

¹Estimates are age-sex-adjusted using the projected 2000 U.S. population as the standard population and using three age groups: 65–74, 75–84, and 85 and over.

NOTE: Data are based on household interviews of a sample of the civilian noninstitutionalized population.

DATA SOURCE: CDC/NCHS, National Health Interview Survey, January–June 2011, Family Core component.