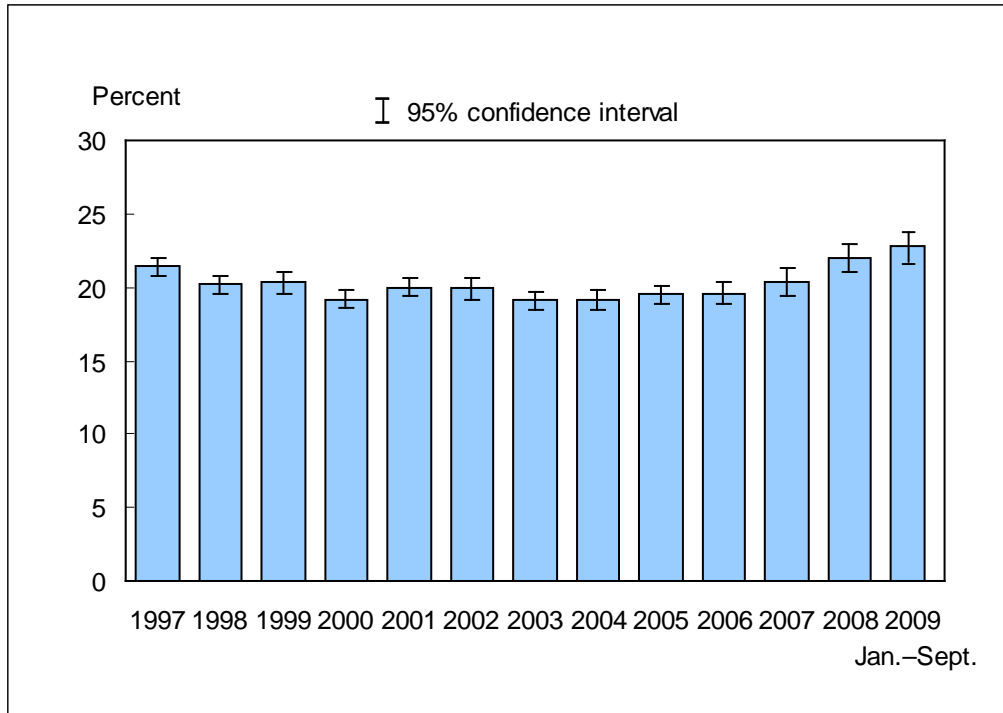


Figure 9.1. Percentage of adults aged 18 years and over who had five or more drinks in 1 day at least once in the past year: United States, 1997-September 2009

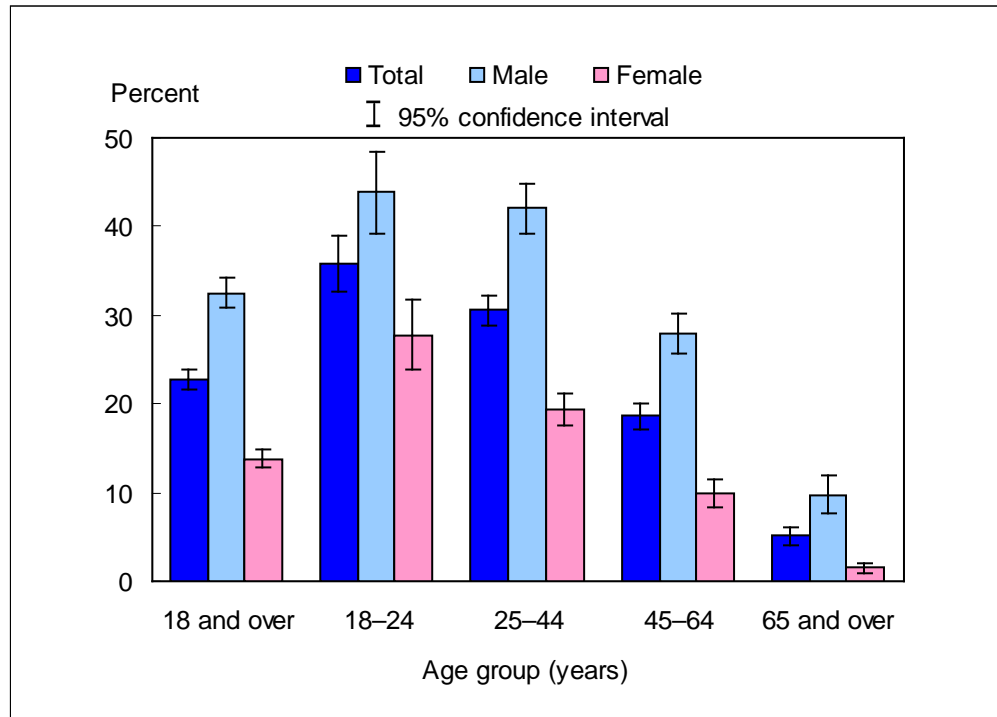


NOTES: The analyses excluded adults with unknown alcohol consumption (about 2% of respondents each year). Beginning with the 2003 data, the National Health Interview Survey transitioned to weights derived from the 2000 census. In this Early Release, estimates for 2000-2002 were recalculated using weights derived from the 2000 census. See "About This Early Release" for more details.

DATA SOURCE: CDC/NCHS, National Health Interview Survey, 1997-September 2009, Sample Adult Core component. Data are based on household interviews of a sample of the civilian noninstitutionalized population.

- For the period January through September 2009, the percentage of adults who had five or more drinks in 1 day at least once in the past year was 22.8% (95% confidence interval = 21.67%-23.93%), which was higher than, but not significantly different from, the 2008 estimate of 22.0%.
- The percentage of adults who had five or more drinks in 1 day at least once in the past year decreased from 21.4% in 1997 to 19.1% in 2003 and 2004, then increased to 22.8% for the period January through September 2009.

Figure 9.2. Percentage of adults aged 18 years and over who had five or more drinks in 1 day at least once in the past year, by age group and sex: United States, January-September 2009

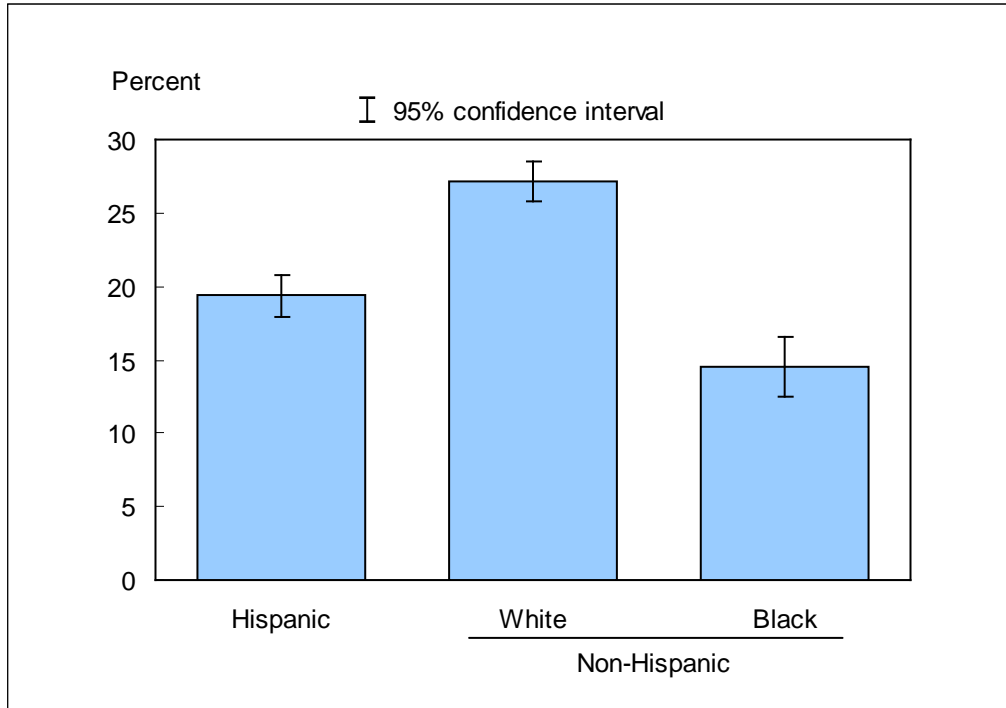


NOTE: The analyses excluded 240 adults (1.4%) with unknown alcohol consumption.

DATA SOURCE: CDC/NCHS, National Health Interview Survey, January-September 2009, Sample Adult Core component. Data are based on household interviews of a sample of the civilian noninstitutionalized population.

- For both sexes, the percentage of adults who had five or more drinks in 1 day at least once in the past year decreased with age.
- In all four age groups, men were considerably more likely than women to have had five or more drinks in 1 day at least once in the past year.

Figure 9.3. Age-sex-adjusted percentage of adults aged 18 years and over who had five or more drinks in 1 day at least once in the past year, by race/ethnicity: United States, January-September 2009



NOTES: The analyses excluded 240 adults (1.4%) with unknown alcohol consumption. Estimates are age-sex adjusted using the projected 2000 U.S. population as the standard population and using four age groups: 18-24 years, 25-44 years, 45-64 years, and 65 years and over.

DATA SOURCE: CDC/NCHS, National Health Interview Survey, January-September 2009, Sample Adult Core component. Data are based on household interviews of a sample of the civilian noninstitutionalized population.

- The age-sex-adjusted percentage of adults who had five or more drinks in 1 day at least once in the past year was 19.4% for Hispanic adults, 27.1% for non-Hispanic white adults, and 14.5% for non-Hispanic black adults.
- Non-Hispanic white adults were more likely to have had five or more drinks in 1 day at least once in the past year compared with Hispanic adults and non-Hispanic black adults.

Data tables for Figures 9.1-9.3:

Data table for Figure 9.1. Percentage of adults aged 18 years and over who had five or more drinks in 1 day at least once in the past year: United States, 1997-September 2009

Year	Crude ¹ percent (95% confidence interval)	Age-adjusted ² percent (95% confidence interval)
1997	21.4 (20.8-22.0)	21.1 (20.5-21.6)
1998	20.2 (19.6-20.8)	19.9 (19.3-20.5)
1999	20.3 (19.6-21.0)	20.1 (19.5-20.7)
2000	19.2 (18.6-19.9)	19.2 (18.6-19.8)
2001	20.0 (19.4-20.6)	20.0 (19.4-20.6)
2002	19.9 (19.2-20.5)	20.0 (19.4-20.6)
2003	19.1 (18.5-19.8)	19.2 (18.6-19.9)
2004	19.1 (18.4-19.8)	19.2 (18.6-19.9)
2005	19.5 (18.89-20.18)	19.8 (19.20-20.49)
2006	19.6 (18.86-20.39)	19.9 (19.19-20.68)
2007	20.4 (19.44-21.34)	20.7 (19.79-21.68)
2008	22.0 (21.00-22.93)	22.4 (21.47-23.38)
January-September 2009	22.8 (21.67-23.93)	23.3 (22.18-24.42)

¹Crude estimates are presented in the figure.

²Estimates for this *Healthy People 2010* Leading Health Indicator are age adjusted using the projected 2000 U.S. population as the standard population and using four age groups: 18-24 years, 25-44 years, 45-64 years, and 65 years and over.

NOTES: Beginning with the 2003 data, the National Health Interview Survey transitioned to weights derived from the 2000 census. In this Early Release, estimates for 2000-2002 were recalculated using weights derived from the 2000 census. See "About This Early Release" for more details.

DATA SOURCE: CDC/NCHS, National Health Interview Survey, 1997-September 2009, Sample Adult Core component. Data are based on household interviews of a sample of the civilian noninstitutionalized population.

Data table for Figure 9.2. Percentage of adults aged 18 years and over who had five or more drinks in 1 day at least once in the past year, by age group and sex: United States, January-September 2009

Age and sex	Percent	95% confidence interval
18-24 years, total	35.8	32.58-38.93
18-24 years, male	43.8	39.25-48.37
18-24 years, female	27.7	23.82-31.67
25-44 years, total	30.5	28.76-32.31
25-44 years, male	42.0	39.15-44.89
25-44 years, female	19.3	17.58-21.11
45-64 years, total	18.6	17.10-20.09
45-64 years, male	27.9	25.68-30.19
45-64 years, female	9.9	8.37-11.40
65 years and over, total	5.1	4.02-6.12
65 years and over, male	9.8	7.66-11.89
65 years and over, female	1.5	0.84-2.10
18 years and over (crude ¹), total	22.8	21.67-23.93
18 years and over (crude ¹), male	32.5	30.81-34.13
18 years and over (crude ¹), female	13.8	12.79-14.91
18 years and over (age-adjusted ²), total	23.3	22.18-24.42
18 years and over (age-adjusted ²), male	32.5	30.92-34.17
18 years and over (age-adjusted ²), female	14.6	13.49-15.61

¹Crude estimates are presented in the figure.

²Estimates are age adjusted using the projected 2000 U.S. population as the standard population and using four age groups: 18-24 years, 25-44 years, 45-64 years, and 65 years and over.

DATA SOURCE: CDC/NCHS, National Health Interview Survey, January-September 2009, Sample Adult Core component. Data are based on household interviews of a sample of the civilian noninstitutionalized population.

Data table for Figure 9.3. Age-sex-adjusted percentage of adults aged 18 years and over who had five or more drinks in 1 day at least once in the past year, by race/ethnicity: United States, January-September 2009

Race/ethnicity	Percent ¹	95% confidence interval
Hispanic or Latino	19.4	17.91-20.83
Not Hispanic or Latino, single race, white	27.1	25.74-28.51
Not Hispanic or Latino, single race, black	14.5	12.47-16.59

¹Estimates are age-sex adjusted using the projected 2000 U.S. population as the standard population and using four age groups: 18-24 years, 25-44 years, 45-64 years, and 65 years and over.

DATA SOURCE: CDC/NCHS, National Health Interview Survey, January-September 2009, Sample Adult Core component. Data are based on household interviews of a sample of the civilian noninstitutionalized population.