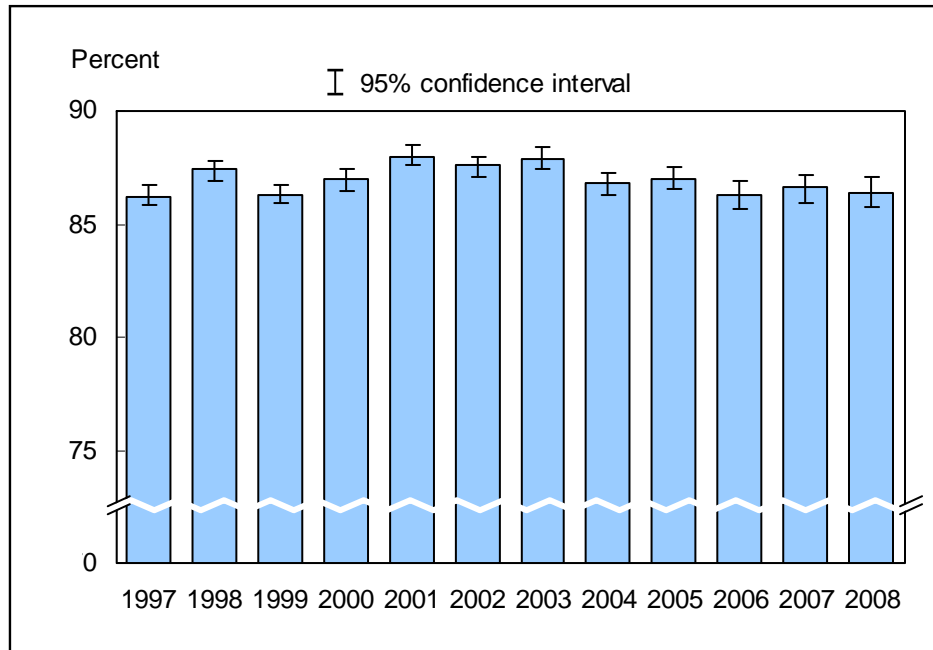


**Figure 2.1. Percentage of persons of all ages with a usual place to go for medical care: United States, 1997–2008**

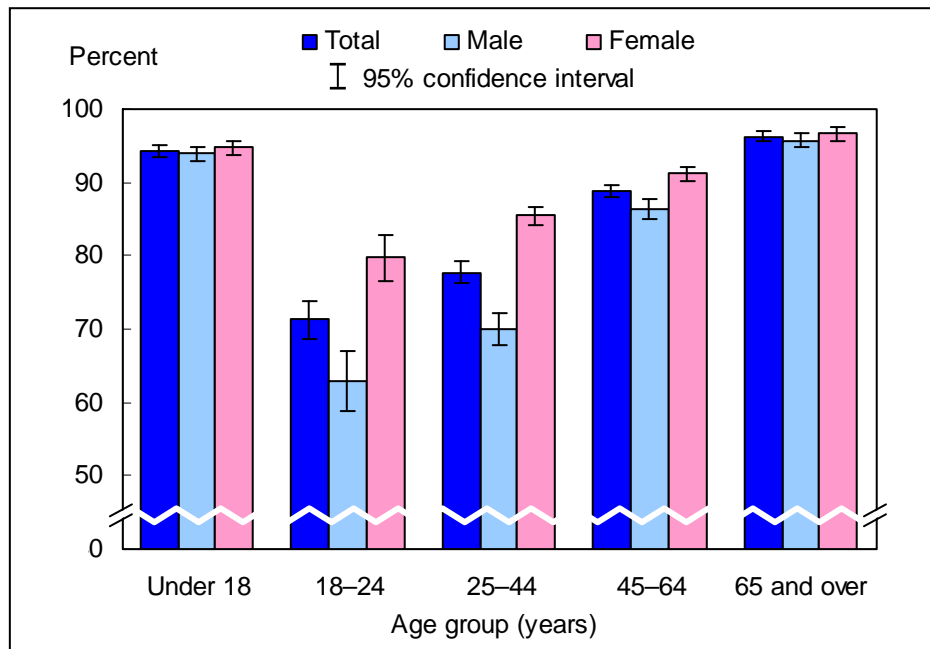


NOTES: The usual place to go for medical care does not include a hospital emergency room. The analyses excluded persons with an unknown usual place to go for medical care (about 1.5% of respondents each year). Beginning with the 2003 data, the National Health Interview Survey (NHIS) transitioned to weights derived from the 2000 census. In this Early Release, estimates for 2000–2002 were recalculated using weights derived from the 2000 census. See “About This Early Release” for more details.

DATA SOURCE: Combined Sample Adult and Sample Child Core components of the 1997–2008 NHIS. Data are based on household interviews of a sample of the civilian noninstitutionalized population.

- In 2008, the percentage of persons who had a usual place to go for medical care was 86.4% (95% confidence interval = 85.73%–87.09%), which was not significantly different from the 2007 estimate of 86.6%.
- The percentage of persons of all ages who had a usual place to go for medical care generally decreased from 87.9% in 2003 to 86.4% in 2008.

**Figure 2.2. Percentage of persons of all ages with a usual place to go for medical care, by age group and sex: United States, 2008**

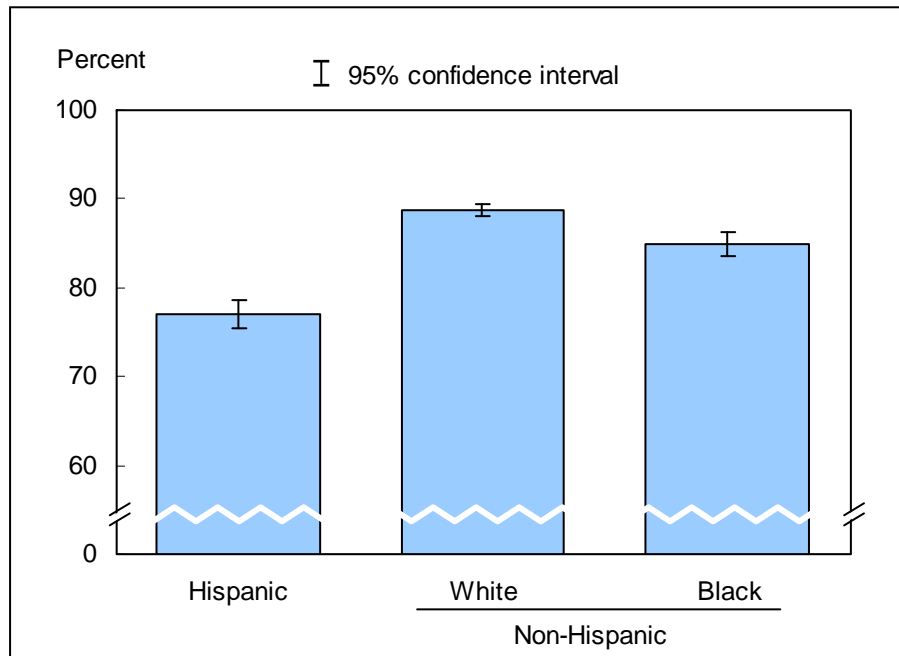


NOTES: The usual place to go for medical care does not include a hospital emergency room. The analyses excluded 287 persons (1.3%) with an unknown usual place to go for medical care.

DATA SOURCE: Based on data collected in the Sample Adult and Sample Child Core components of the 2008 National Health Interview Survey. Data are based on household interviews of a sample of the civilian noninstitutionalized population.

- Of the five age groups, persons aged 18–24 years were least likely to have a usual place to go for medical care. Children under age 18 years were more likely than adults in age groups 18–24 years, 25–44 years, and 45–64 years to have a usual place to go for medical care.
- Among those aged 18 years and over, the percentage of persons having a usual place to go for medical care increased with age.
- Women were more likely than men in age groups 18-24 years, 25-44 years, and 45-64 years to have a usual place to go for medical care.

**Figure 2.3. Age-sex-adjusted percentage of persons of all ages with a usual place to go for medical care, by race/ethnicity: United States, 2008**



NOTES: The usual place to go for medical care does not include a hospital emergency room. The analyses excluded 287 persons (1.3%) with an unknown usual place to go for medical care. Estimates are age-sex adjusted using the projected 2000 U.S. population as the standard population and using five age groups: under 18 years, 18–24 years, 25–44 years, 45–64 years, and 65 years and over.

DATA SOURCE: Based on data collected in the Sample Adult and Sample Child Core components of the 2008 National Health Interview Survey. Data are based on household interviews of a sample of the civilian noninstitutionalized population.

- After adjusting for age and sex, the percentage of persons with a usual place to go for medical care was 77.0% for Hispanic persons, 88.7% for non-Hispanic white persons, and 84.9% for non-Hispanic black persons.
- Of the three race/ethnicity groups, Hispanic persons were least likely to have a usual place to go for medical care.

## Data tables for Figures 2.1–2.3:

### Data table for Figure 2.1. Percentage of persons of all ages with a usual place to go for medical care: United States, 1997–2008

Year	Crude <sup>1</sup> percent (95% confidence interval)	Age-adjusted <sup>2</sup> percent (95% confidence interval)
1997	86.2 (85.8-86.7)	86.3 (85.9-86.7)
1998	87.4 (86.9-87.8)	87.4 (87.0-87.9)
1999	86.3 (85.9-86.7)	86.4 (86.0-86.8)
2000	87.0 (86.5-87.4)	87.0 (86.6-87.4)
2001	88.0 (87.6-88.5)	88.0 (87.6-88.5)
2002	87.6 (87.1-88.0)	87.6 (87.1-88.0)
2003	87.9 (87.4-88.4)	87.9 (87.4-88.4)
2004	86.8 (86.3-87.3)	86.8 (86.3-87.2)
2005	87.0 (86.56-87.50)	86.9 (86.47-87.41)
2006	86.3 (85.68-86.92)	86.2 (85.56-86.80)
2007	86.6 (85.97-87.19)	86.5 (85.84-87.06)
2008	86.4 (85.73-87.09)	86.2 (85.54-86.88)

<sup>1</sup>Crude estimates are presented in the figure.

<sup>2</sup>Estimates for this *Healthy People 2010* Leading Health Indicator are age adjusted using the projected 2000 U.S. population as the standard population and using five age groups: under 18 years, 18–24 years, 25–44 years, 45–64 years, and 65 years and over.

NOTES: Beginning with the 2003 data, the National Health Interview Survey (NHIS) transitioned to weights derived from the 2000 census. In this Early Release, estimates for 2000–2002 were recalculated using weights derived from the 2000 census. See “About This Early Release” for more details.

DATA SOURCE: Combined Sample Adult and Sample Child Core components of the 1997–2008 NHIS. Data are based on household interviews of a sample of the civilian noninstitutionalized population.

**Data table for Figure 2.2. Percentage of persons of all ages with a usual place to go for medical care, by age group and sex: United States, 2008**

Age and sex	Percent	95% confidence interval
Under 18 years, total	94.3	93.57-95.05
Under 18 years, male	93.9	92.98-94.89
Under 18 years, female	94.7	93.78-95.61
18–24 years, total	71.3	68.77-73.77
18–24 years, male	62.8	58.70-66.99
18–24 years, female	79.7	76.60-82.83
25–44 years, total	77.8	76.34-79.16
25–44 years, male	69.9	67.80-72.06
25–44 years, female	85.4	84.11-86.73
45–64 years, total	88.9	88.05-89.74
45–64 years, male	86.5	85.13-87.78
45–64 years, female	91.2	90.25-92.16
65 years and over, total	96.3	95.61-96.89
65 years and over, male	95.8	94.80-96.72
65 years and over, female	96.6	95.75-97.50
All ages (crude <sup>1</sup> ), total	86.4	85.73-87.09
All ages (crude <sup>1</sup> ), male	82.5	81.54-83.50
All ages (crude <sup>1</sup> ), female	90.1	89.48-90.80
All ages (age-adjusted <sup>2</sup> ), total	86.2	85.54-86.88
All ages (age-adjusted <sup>2</sup> ), male	82.4	81.42-83.32
All ages (age-adjusted <sup>2</sup> ), female	90.0	89.29-90.64

<sup>1</sup>Crude estimates are presented in the figure.

<sup>2</sup>Estimates for this *Healthy People 2010* Leading Health Indicator are age adjusted using the projected 2000 U.S. population as the standard population and using five age groups: under 18 years, 18–24 years, 25–44 years, 45–64 years, and 65 years and over.

DATA SOURCE: Based on data collected in the Sample Adult and Sample Child Core components of the 2008 National Health Interview Survey. Data are based on household interviews of a sample of the civilian noninstitutionalized population.

**Data table for Figure 2.3. Age-sex-adjusted percentage of persons of all ages with a usual place to go for medical care, by race/ethnicity: United States, 2008**

<b>Race/ethnicity</b>	<b>Age-sex-adjusted<sup>1</sup> percent (95% confidence interval)</b>	<b>Age-adjusted<sup>2</sup> percent (95% confidence interval)</b>
Hispanic or Latino	77.0 (75.46-78.57)	76.7 (75.05-78.33)
Not Hispanic or Latino, single race, white	88.7 (87.97-89.48)	88.7 (87.97-89.49)
Not Hispanic or Latino, single race, black	84.9 (83.56-86.22)	85.2 (83.93-86.54)

<sup>1</sup>Age-sex-adjusted estimates are presented in the figure. Estimates are age-sex adjusted using the projected 2000 U.S. population as the standard population and using five age groups: under 18 years, 18–24 years, 25–44 years, 45–64 years, and 65 years and over.

<sup>2</sup>Estimates for this *Healthy People 2010* Leading Health Indicator are age adjusted using the projected 2000 U.S. population as the standard population and using five age groups: under 18 years, 18–24 years, 25–44 years, 45–64 years, and 65 years and over.

DATA SOURCE: Based on data collected in the Sample Adult and Sample Child Core components of the 2008 National Health Interview Survey. Data are based on household interviews of a sample of the civilian noninstitutionalized population.