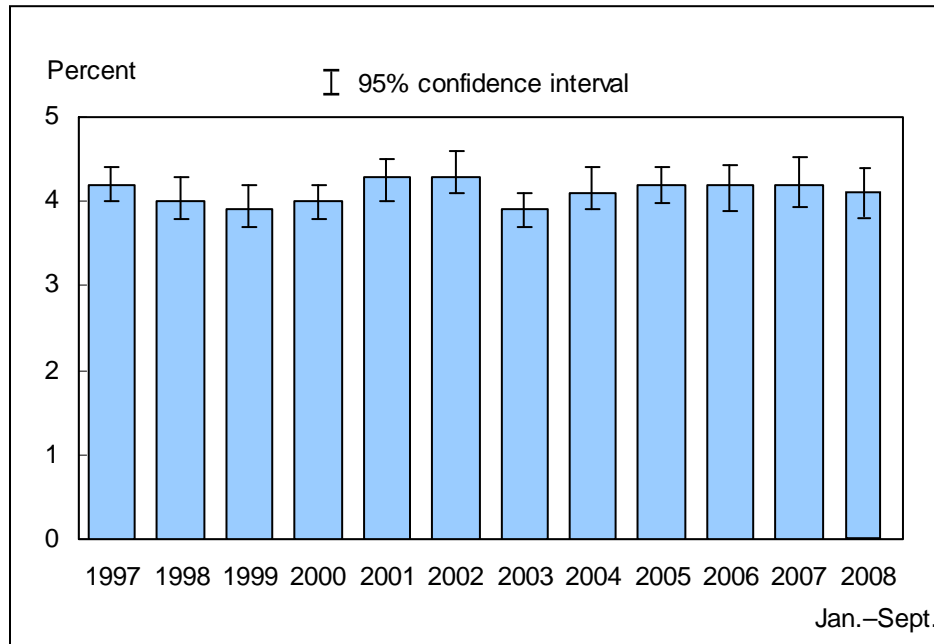


**Figure 15.1. Percentage of persons of all ages who experienced an asthma episode in the past 12 months: United States, 1997–September 2008**

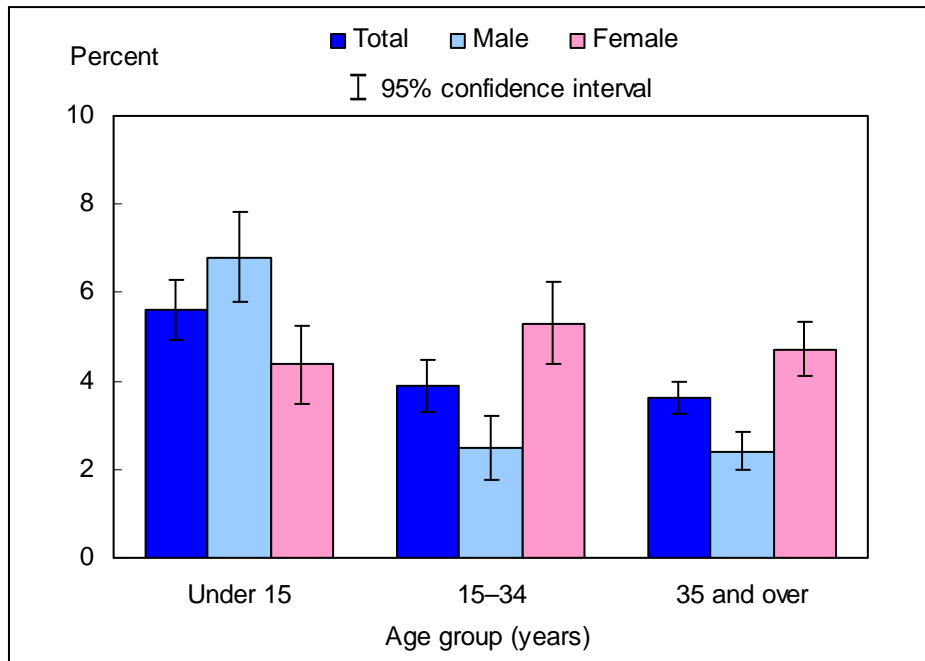


NOTES: Information on an episode of asthma or asthma attack during the past 12 months is self-reported by adults aged 18 years and over. For children under age 18 years, the information is collected from an adult family member, usually a parent, who is knowledgeable about the child's health. The analyses excluded people with unknown asthma episode status (about 0.1% of respondents each year). Beginning with the 2003 data, the National Health Interview Survey (NHIS) transitioned to weights derived from the 2000 census. In this Early Release, estimates for 2000–2002 were recalculated using weights derived from the 2000 census. See "About This Early Release" for more details.

DATA SOURCE: Combined Sample Adult and Sample Child Core components of the 1997–September 2008 NHIS. Data are based on household interviews of a sample of the civilian noninstitutionalized population.

- For the period January through September 2008, the percentage of persons of all ages who experienced an asthma episode in the past 12 months was 4.1% (95% confidence interval = 3.81%–4.40%), which was not significantly different from the 2007 estimate of 4.2%.
- The annual percentage of persons of all ages who experienced an asthma episode in the past 12 months ranged 3.9% in 1999 and 2003 to 4.3% in 2001 and 2002.

**Figure 15.2. Percentage of persons of all ages who experienced an asthma episode in the past 12 months, by age group and sex: United States, January–September 2008**

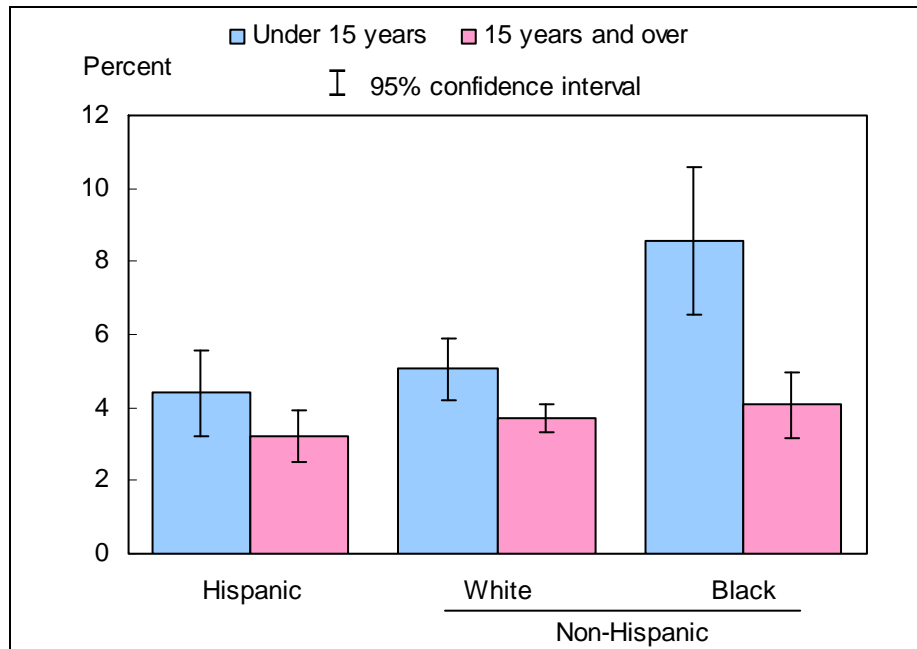


NOTES: Information on an episode of asthma or asthma attack during the past 12 months is self-reported by adults aged 18 years and over. For children under age 18 years, the information is collected from an adult family member, usually a parent, who is knowledgeable about the child's health. The analyses excluded 37 persons (0.1%) with unknown asthma episode status.

DATA SOURCE: Based on data collected from January through September in the Sample Adult and Sample Child Core components of the 2008 National Health Interview Survey. Data are based on household interviews of a sample of the civilian noninstitutionalized population.

- For both sexes combined, the percentage of persons who had an asthma episode in the past 12 months was higher among children under age 15 years than among persons aged 15–34 years and 35 years and over.
- For children under age 15 years, the percentage who had an asthma episode in the past 12 months was higher among boys than among girls. However, for age groups 15–34 years and 35 years and over, the percentage was higher among females than among males.

**Figure 15.3. Sex-adjusted percentage of persons of all ages who experienced an asthma episode in the past 12 months, by age group and race/ethnicity: United States, January–September 2008**

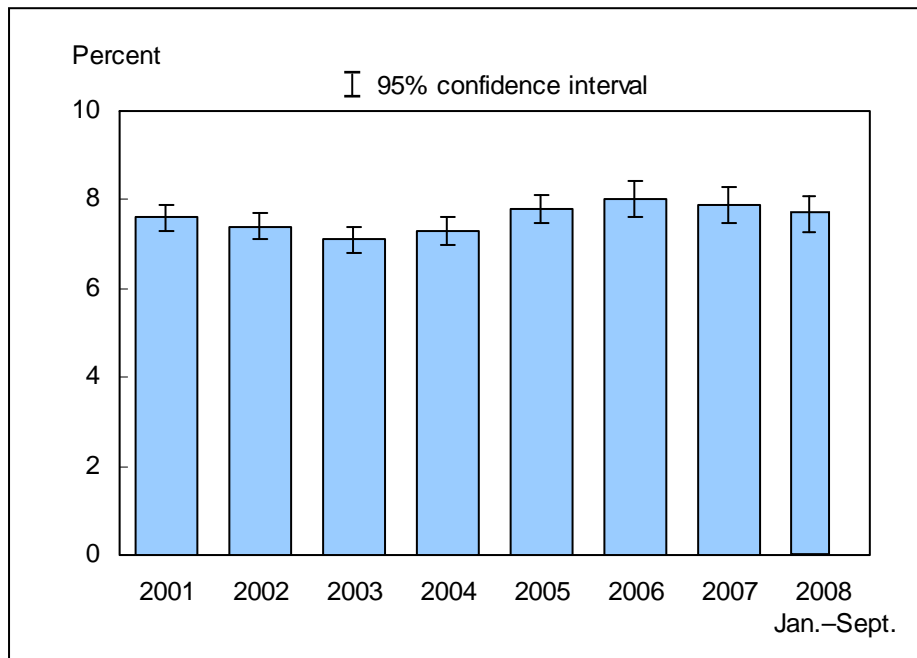


NOTES: Information on an episode of asthma or asthma attack during the past 12 months is self-reported by adults aged 18 years and over. For children under age 18 years, the information is collected from an adult family member, usually a parent, who is knowledgeable about the child's health. The analyses excluded 37 persons (0.1%) with unknown asthma episode status.

DATA SOURCE: Based on data collected from January through September in the Sample Adult and Sample Child Core components of the 2008 National Health Interview Survey. Data are based on household interviews of a sample of the civilian noninstitutionalized population.

- For children under age 15 years, the sex-adjusted percentage who had an asthma episode in the past 12 months was higher among non-Hispanic black children than among Hispanic and non-Hispanic white children.
- For persons aged 15 years and over, the sex-adjusted percentages who had an asthma episode in the past 12 months were 3.2% for Hispanic persons, 3.7% for non-Hispanic white persons, and 4.1% for non-Hispanic black persons.

**Figure 15.4. Prevalence of current asthma among persons of all ages: United States, 2001–September 2008**

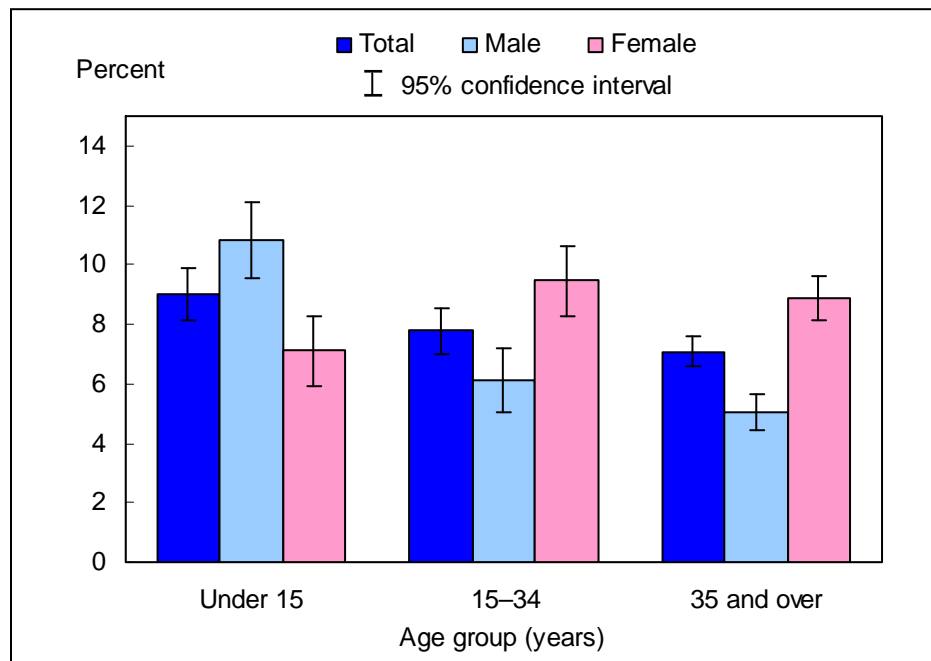


NOTES: Beginning in 2001, respondents were asked about current asthma in addition to the question regarding asthma episodes. Information on current asthma is self-reported by adults aged 18 years and over. For children under age 18 years, the information is collected from an adult family member, usually a parent, who is knowledgeable about the child's health. The analyses excluded people with unknown current asthma status (about 0.2% of respondents each year). Beginning with the 2003 data, the National Health Interview Survey (NHIS) transitioned to weights derived from the 2000 census. In this Early Release, estimates for 2001–2002 were recalculated using weights derived from the 2000 census. See "About This Early Release" for more details.

DATA SOURCE: Combined Sample Adult and Sample Child Core components of the 2001–September 2008 NHIS. Data are based on household interviews of a sample of the civilian noninstitutionalized population.

- For the period January through September 2008, 7.7% (95% confidence interval = 7.26%–8.05%) of persons of all ages currently had asthma, which was not significantly different from the 2007 estimate of 7.9%.
- The annual prevalence of current asthma among persons of all ages ranged from 7.1% in 2003 to 8.0% in 2006.

**Figure 15.5. Prevalence of current asthma among persons of all ages, by age group and sex: United States, January–September 2008**

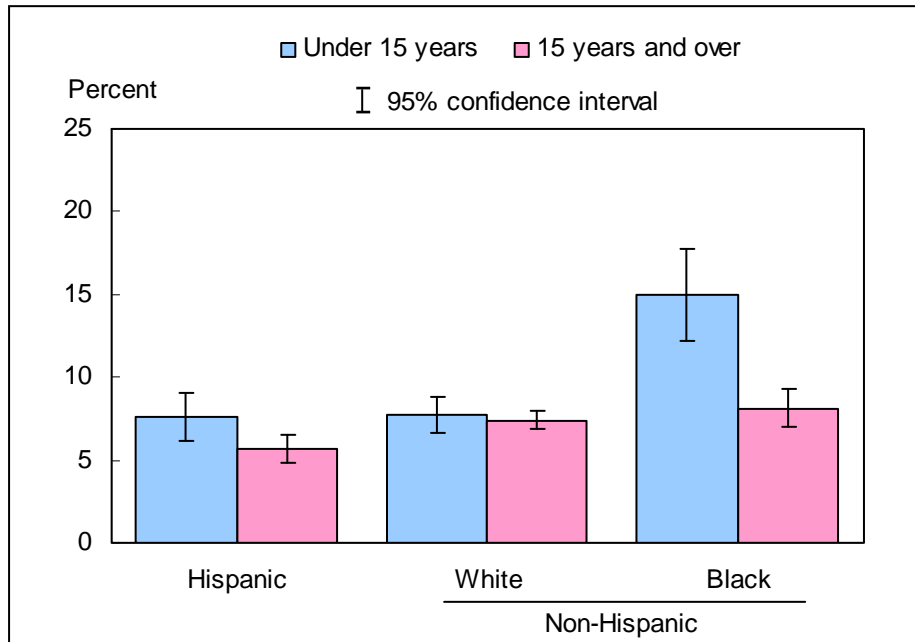


NOTES: Information on current asthma is self-reported by adults aged 18 years and over. For children under age 18 years, the information is collected from an adult family member, usually a parent, who is knowledgeable about the child's health. The analyses excluded 60 persons (0.2%) with unknown current asthma status.

DATA SOURCE: Based on data collected from January through September in the Sample Adult and Sample Child Core components of the 2008 National Health Interview Survey. Data are based on household interviews of a sample of the civilian noninstitutionalized population.

- For both sexes combined, the prevalence of current asthma was lower among persons aged 15–34 years and 35 years and over than among persons under age 15 years. This pattern was seen among males, but not females.
- For children under age 15 years, the prevalence of current asthma was higher among boys than among girls. However, for age groups 15–34 years and 35 years and over, the prevalence of current asthma was higher among females than among males.

**Figure 15.6. Sex-adjusted prevalence of current asthma among persons of all ages, by age group and race/ethnicity: United States, January–September 2008**



NOTES: Information on current asthma is self-reported by adults aged 18 years and over. For children under age 18 years, the information is collected from an adult family member, usually a parent, who is knowledgeable about the child's health. The analyses excluded 60 persons (0.2%) with unknown current asthma status.

DATA SOURCE: Based on data collected from January through September in the Sample Adult and Sample Child Core components of the 2008 National Health Interview Survey. Data are based on household interviews of a sample of the civilian noninstitutionalized population.

- For children under age 15 years, the sex-adjusted prevalence of current asthma was higher among non-Hispanic black children than among Hispanic and non-Hispanic white children.
- For persons aged 15 years and over, the sex-adjusted prevalence of current asthma was higher among non-Hispanic white persons and non-Hispanic black persons than among Hispanic persons.

## Data tables for Figures 15.1–15.6:

### Data table for Figure 15.1. Percentage of persons of all ages who experienced an asthma episode in the past 12 months: United States, 1997–September 2008

Year	Crude <sup>1</sup> percent (95% confidence interval)	Age-adjusted <sup>2</sup> percent (95% confidence interval)
1997	4.2 (4.0-4.4)	4.2 (3.9-4.4)
1998	4.0 (3.7-4.2)	3.9 (3.7-4.2)
1999	3.9 (3.6-4.1)	3.9 (3.6-4.1)
2000	4.0 (3.8-4.2)	4.0 (3.8-4.2)
2001	4.3 (4.1-4.6)	4.3 (4.1-4.5)
2002	4.3 (4.0-4.5)	4.3 (4.0-4.5)
2003	3.9 (3.7-4.1)	3.9 (3.7-4.1)
2004	4.1 (3.8-4.3)	4.1 (3.8-4.3)
2005	4.2 (3.99-4.43)	4.2 (4.00-4.44)
2006	4.2 (3.96-4.52)	4.3 (3.98-4.54)
2007	4.2 (3.87-4.46)	4.2 (3.88-4.47)
January–September 2008	4.1 (3.81-4.40)	4.1 (3.83-4.42)

<sup>1</sup>Crude estimates are presented in the figure.

<sup>2</sup>Estimates are age adjusted using the projected 2000 U.S. population as the standard population and using three age groups: 0–14 years, 15–34 years, and 35 years and over.

NOTES: Beginning with the 2003 data, the National Health Interview Survey (NHIS) transitioned to weights derived from the 2000 census. In this Early Release, estimates for 2000–2002 were recalculated using weights derived from the 2000 census. See “About This Early Release” for more details.

DATA SOURCE: Combined Sample Adult and Sample Child Core components of the 1997–September 2008 NHIS. Data are based on household interviews of a sample of the civilian noninstitutionalized population.

**Data table for Figure 15.2. Percentage of persons of all ages who experienced an asthma episode in the past 12 months, by age group and sex: United States, January–September 2008**

Age and sex	Percent	95% confidence interval
Under 15 years, total	5.6	4.91-6.31
Under 15 years, male	6.8	5.81-7.81
Under 15 years, female	4.4	3.48-5.26
15–34 years, total	3.9	3.31-4.48
15–34 years, male	2.5	1.76-3.23
15–34 years, female	5.3	4.39-6.23
35 years and over, total	3.6	3.26-4.00
35 years and over, male	2.4	1.97-2.87
35 years and over, female	4.7	4.13-5.32
All ages (crude <sup>1</sup> ), total	4.1	3.81-4.40
All ages (crude <sup>1</sup> ), male	3.4	3.01-3.74
All ages (crude <sup>1</sup> ), female	4.8	4.35-5.27
All ages (age-adjusted <sup>2</sup> ), total	4.1	3.83-4.42
All ages (age-adjusted <sup>2</sup> ), male	3.4	3.02-3.74
All ages (age-adjusted <sup>2</sup> ), female	4.8	4.35-5.27

<sup>1</sup>Crude estimates are presented in the figure.

<sup>2</sup>Estimates are age adjusted using the projected 2000 U.S. population as the standard population and using three age groups: 0–14 years, 15–34 years, and 35 years and over.

DATA SOURCE: Based on data collected from January through September in the Sample Adult and Sample Child Core components of the 2008 National Health Interview Survey. Data are based on household interviews of a sample of the civilian noninstitutionalized population.

**Data table for Figure 15.3. Sex-adjusted percentage of persons of all ages who experienced an asthma episode in the past 12 months, by age group and race/ethnicity: United States, January–September 2008**

Age and race/ethnicity	Percent <sup>1</sup>	95% confidence interval
Under 15 years, Hispanic or Latino	4.4	3.24-5.57
Under 15 years, not Hispanic or Latino, single race, white	5.1	4.20-5.90
Under 15 years, not Hispanic or Latino, single race, black	8.6	6.53-10.59
15 years and over, Hispanic or Latino	3.2	2.53-3.91
15 years and over, not Hispanic or Latino, single race, white	3.7	3.33-4.09
15 years and over, not Hispanic or Latino, single race, black	4.1	3.17-4.98

<sup>1</sup>Estimates are sex adjusted using the projected 2000 U.S. population as the standard population.

DATA SOURCE: Based on data collected from January through September in the Sample Adult and Sample Child Core components of the 2008 National Health Interview Survey. Data are based on household interviews of a sample of the civilian noninstitutionalized population.



**Data table for Figure 15.4. Prevalence of current asthma among persons of all ages:  
 United States, 2001–September 2008**

Year	Crude <sup>1</sup> percent (95% confidence interval)	Age-adjusted <sup>2</sup> percent (95% confidence interval)
2001	7.6 (7.3-7.9)	7.6 (7.3-7.9)
2002	7.4 (7.1-7.7)	7.4 (7.1-7.7)
2003	7.1 (6.8-7.4)	7.1 (6.8-7.4)
2004	7.3 (7.0-7.6)	7.3 (7.1-7.7)
2005	7.8 (7.50-8.10)	7.8 (7.51-8.11)
2006	8.0 (7.61-8.41)	8.0 (7.62-8.43)
2007	7.9 (7.50-8.31)	7.9 (7.51-8.33)
January–September 2008	7.7 (7.26-8.05)	7.7 (7.28-8.07)

<sup>1</sup>Crude estimates are presented in the figure.

<sup>2</sup>Estimates are age adjusted using the projected 2000 U.S. population as the standard population and using three age groups: 0–14 years, 15–34 years, and 35 years and over.

NOTES: Beginning in 2001, respondents were asked about current asthma in addition to the question regarding asthma episodes. Beginning with 2003 data, the National Health Interview Survey (NHIS) transitioned to weights derived from the 2000 census. In this Early Release, estimates for 2000–2002 were recalculated using weights derived from the 2000 census. See "About This Early Release" for more details.

DATA SOURCE: Combined Sample Adult and Sample Child Core components of the 2001–September 2008 NHIS. Data are based on household interviews of a sample of the civilian noninstitutionalized population.

**Data table for Figure 15.5. Prevalence of current asthma among persons of all ages, by age group and sex: United States, January–September 2008**

Age and sex	Percent	95% confidence interval
Under 15 years, total	9.0	8.12-9.89
Under 15 years, male	10.8	9.55-12.13
Under 15 years, female	7.1	5.94-8.25
15–34 years, total	7.8	6.99-8.57
15–34 years, male	6.1	5.04-7.20
15–34 years, female	9.5	8.28-10.65
35 years and over, total	7.1	6.56-7.57
35 years and over, male	5.0	4.42-5.67
35 years and over, female	8.9	8.17-9.61
All ages (crude <sup>1</sup> ), total	7.7	7.26-8.05
All ages (crude <sup>1</sup> ), male	6.6	6.07-7.09
All ages (crude <sup>1</sup> ), female	8.7	8.12-9.27
All ages (age-adjusted <sup>2</sup> ), total	7.7	7.28-8.07
All ages (age-adjusted <sup>2</sup> ), male	6.6	6.08-7.09
All ages (age-adjusted <sup>2</sup> ), female	8.7	8.09-9.24

<sup>1</sup>Crude estimates are presented in the figure.

<sup>2</sup>Estimates are age adjusted using the projected 2000 U.S. population as the standard population and using three age groups: 0–14 years, 15–34 years, and 35 years and over.

DATA SOURCE: Based on data collected from January through September in the Sample Adult and Sample Child Core components of the 2008 National Health Interview Survey. Data are based on household interviews of a sample of the civilian noninstitutionalized population.

**Data table for Figure 15.6. Sex-adjusted prevalence of current asthma among persons of all ages, by age group and race/ethnicity: United States, January–September 2008**

Age and race/ethnicity	Percent <sup>1</sup>	95% confidence interval
Under 15 years, Hispanic or Latino	7.6	6.21-9.03
Under 15 years, not Hispanic or Latino, single race, white	7.8	6.69-8.85
Under 15 years, not Hispanic or Latino, single race, black	15.0	12.20-17.76
15 years and over, Hispanic or Latino	5.7	4.83-6.54
15 years and over, not Hispanic or Latino, single race, white	7.4	6.83-7.92
15 years and over, not Hispanic or Latino, single race, black	8.1	6.95-9.24

<sup>1</sup>Estimates are sex adjusted using the projected 2000 U.S. population as the standard population.

DATA SOURCE: Based on data collected from January through September in the Sample Adult and Sample Child Core components of the 2008 National Health Interview Survey. Data are based on household interviews of a sample of the civilian noninstitutionalized population.