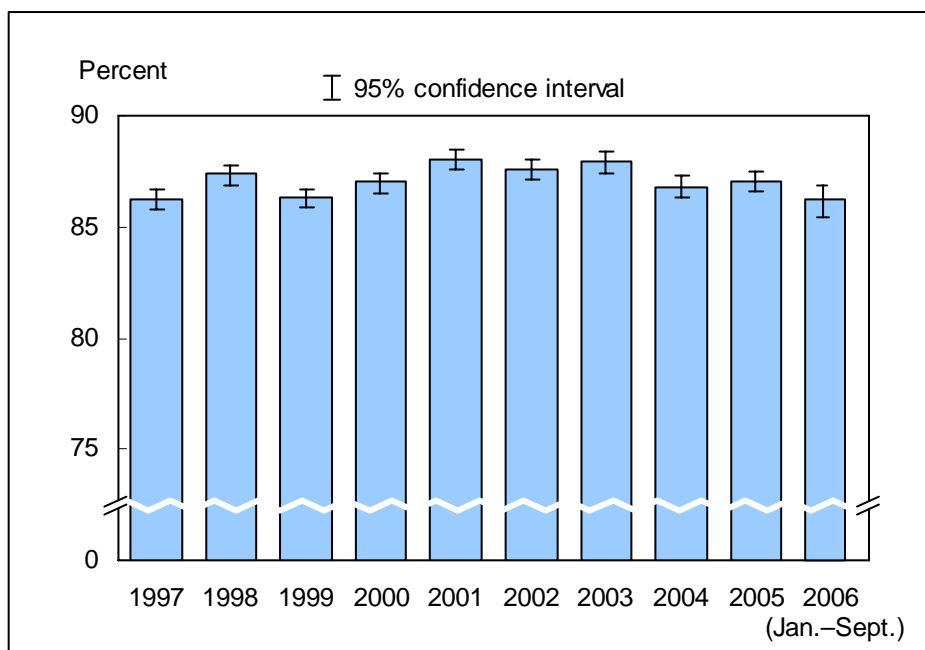


Figure 2.1. Percentage of persons of all ages with a usual place to go for medical care: United States, 1997–September 2006

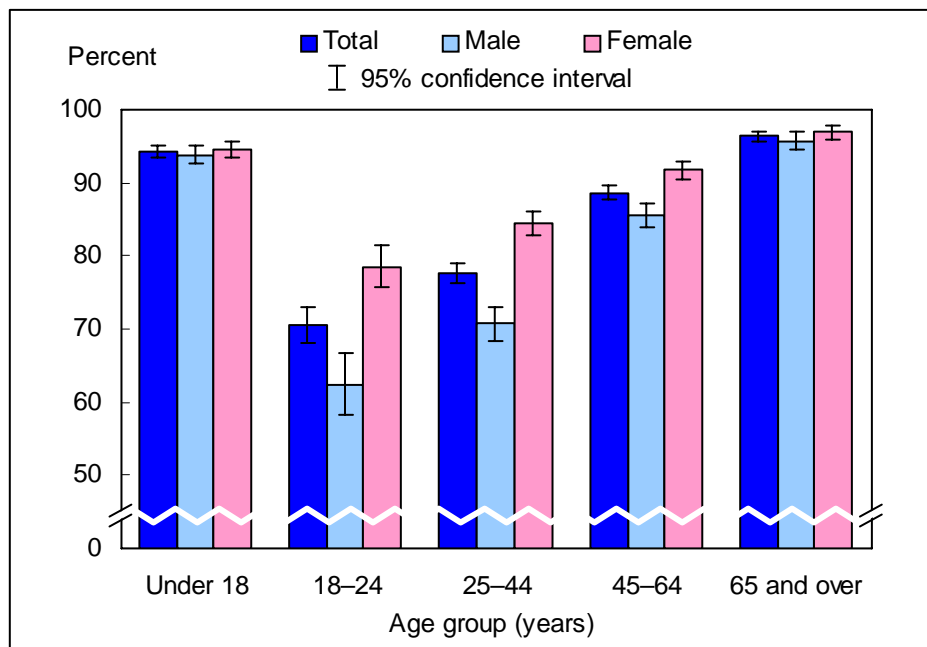


NOTES: The usual place to go for medical care does not include a hospital emergency room. The analyses excluded persons with an unknown usual place to go for medical care (about 0.6% of respondents each year). Beginning with the 2003 data, the National Health Interview Survey (NHIS) transitioned to weights derived from the 2000 census. In this Early Release, estimates for 2000–2002 were recalculated using weights derived from the 2000 census. See “About This Release” and Table III in the Appendix for more details.

DATA SOURCE: Combined Sample Adult and Sample Child Core components of the 1997–2006 NHIS. The estimate for 2006 was based on data collected from January through September. Data are based on household interviews of a sample of the civilian noninstitutionalized population.

- For the period January through September 2006, the percentage of persons who had a usual place to go for medical care was 86.2% (95% confidence interval = 85.43–86.90%), which was not significantly different from the 2005 estimate of 87.0%.
- The percentage of persons who had a usual place to go for medical care decreased from 87.9% in 2003 to 86.2% for the period January through September 2006.

Figure 2.2. Percentage of persons of all ages with a usual place to go for medical care, by age group and sex: United States, January–September 2006

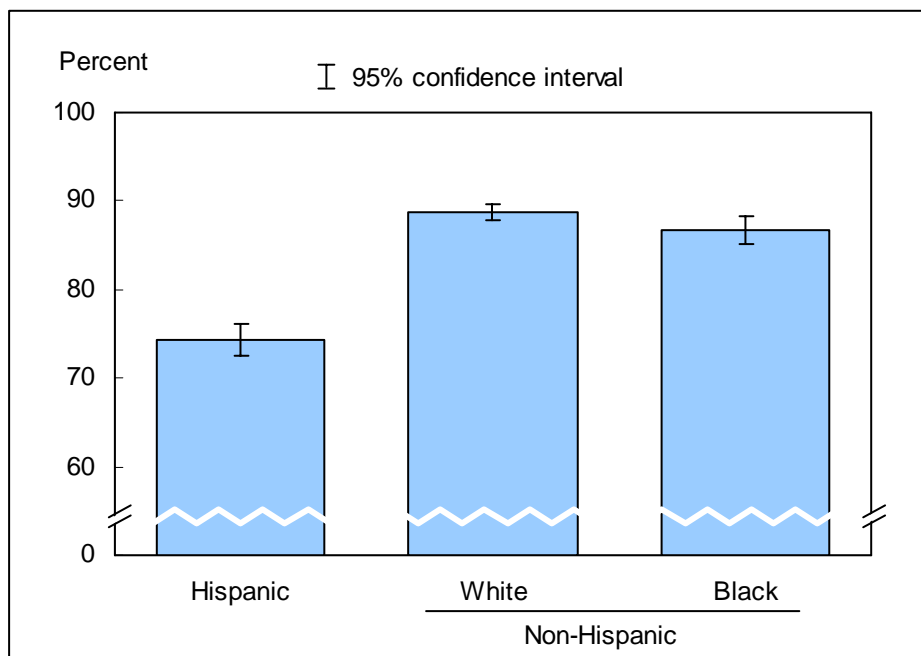


NOTES: The usual place to go for medical care does not include a hospital emergency room. The analyses excluded 153 persons (0.9%) with an unknown usual place to go for medical care.

DATA SOURCE: Based on data collected from January through September in the Sample Adult and Sample Child Core components of the 2006 National Health Interview Survey. Data are based on household interviews of a sample of the civilian noninstitutionalized population.

- Of the five age groups, persons aged 18–24 years were least likely to have a usual place to go for medical care. Children under age 18 years were more likely than adults aged 18–64 years to have a usual place to go for medical care.
- Among those aged 18 years and over, the percentage of persons having a usual place to go for medical care increased with age.
- Among adults in the age groups 18–24 years, 25–44 years, and 45–64 years, men were less likely than women to have a usual place to go for medical care.

Figure 2.3. Age-sex-adjusted percentage of persons of all ages with a usual place to go for medical care, by race/ethnicity: United States, January–September 2006



NOTES: The usual place to go for medical care does not include a hospital emergency room. The analyses excluded 153 persons (0.9%) with an unknown usual place to go for medical care. Estimates are age-sex adjusted using the projected 2000 U.S. population as the standard population using five age groups: under 18 years, 18–24 years, 25–44 years, 45–64 years, and 65 years and over.

DATA SOURCE: Based on data collected from January through September in the Sample Adult and Sample Child Core components of the 2006 National Health Interview Survey. Data are based on household interviews of a sample of the civilian noninstitutionalized population.

- After adjusting for age and sex, the percentage of persons with a usual place to go for medical care was 74.3% for Hispanic persons, 88.7% for non-Hispanic white persons, and 86.7% for non-Hispanic black persons.
- Of the three race/ethnicity groups, Hispanic persons were least likely to have a usual place to go for medical care.

Data tables for Figures 2.1–2.3:

Data table for Figure 2.1. Percentage of persons of all ages with a usual place to go for medical care: United States, 1997–September 2006

Year	Percent (95% confidence interval)	
	Crude ¹	Age-adjusted ²
1997	86.2 (85.8-86.7)	86.3 (85.9-86.7)
1998	87.4 (86.9-87.8)	87.4 (87.0-87.9)
1999	86.3 (85.9-86.7)	86.4 (86.0-86.8)
2000	87.0 (86.5-87.4)	87.0 (86.6-87.4)
2001	88.0 (87.6-88.5)	88.0 (87.6-88.5)
2002	87.6 (87.1-88.0)	87.6 (87.1-88.0)
2003	87.9 (87.4-88.4)	87.9 (87.4-88.4)
2004	86.8 (86.3-87.3)	86.8 (86.3-87.2)
2005	87.0 (86.56-87.50)	86.9 (86.47-87.41)
January-September 2006	86.2 (85.43-86.90)	86.0 (85.30-86.79)

¹Crude estimates are presented in the figure.

²Estimates for this Healthy People 2010 Leading Health Indicator are age adjusted using the projected 2000 U.S. population as the standard population using five age groups: under 18 years, 18–24 years, 25–44 years, 45–64 years, and 65 years and over.

NOTES: Beginning with the 2003 data, the National Health Interview Survey (NHIS) transitioned to weights derived from the 2000 census. In this Early Release, estimates for 2000–2002 were recalculated using weights derived from the 2000 census. See “About This Release” and Table III in the Appendix for more details.

DATA SOURCE: NHIS, 1997–September 2006. Data are based on household interviews of a sample of the civilian noninstitutionalized population.

Data table for Figure 2.2. Percentage of persons of all ages with a usual place to go for medical care, by age group and sex: United States, January–September 2006

Age and sex	Percent	95% confidence interval
Under 18 years		
Total	94.2	93.37-95.01
Male	93.9	92.72-95.00
Female	94.5	93.45-95.63
18–24 years		
Total	70.5	67.96-73.10
Male	62.5	58.21-66.74
Female	78.6	75.79-81.32
25–44 years		
Total	77.6	76.17-79.12
Male	70.7	68.50-72.95
Female	84.5	82.86-86.10
45–64 years		
Total	88.7	87.71-89.65
Male	85.5	83.86-87.10
Female	91.7	90.59-92.81
65 years and over		
Total	96.4	95.64-97.11
Male	95.7	94.45-96.88
Female	96.9	96.03-97.79
All ages: crude¹		
Total	86.2	85.43-86.90
Male	82.3	81.25-83.38
Female	89.9	89.13-90.59
All ages: age-adjusted²		
Total	86.0	85.30-86.79
Male	82.3	81.29-83.37
Female	89.7	88.92-90.44

¹Crude estimates are presented in the figure.

²Estimates for this Healthy People 2010 Leading Health Indicator are age adjusted using the projected 2000 U.S. population as the standard population using five age groups: under 18 years, 18–24 years, 25–44 years, 45–64 years, and 65 years and over.

DATA SOURCE: National Health Interview Survey, January–September 2006. Data are based on household interviews of a sample of the civilian noninstitutionalized population.

Data table for Figure 2.3. Age-sex-adjusted percentage of persons of all ages with a usual place to go for medical care, by race/ethnicity: United States, January–September 2006

Race/ethnicity	Percent (95% confidence interval)	
	Age-sex-adjusted ¹	Age-adjusted ²
Hispanic or Latino	74.3 (72.41-76.12)	74.0 (72.16-75.92)
Not Hispanic or Latino:		
White, single race	88.7 (87.86-89.55)	88.7 (87.87-89.56)
Black, single race	86.7 (85.08-88.35)	86.9 (85.39-88.49)

¹Age-sex-adjusted estimates are presented in the figure. Estimates are age-sex adjusted using the projected 2000 U.S. population as the standard population using five age groups: under 18 years, 18–24 years, 25–44 years, 45–64 years, and 65 years and over.

²Estimates for this Healthy People 2010 Leading Health Indicator are age adjusted using the projected 2000 U.S. population as the standard population using five age groups: under 18 years, 18–24 years, 25–44 years, 45–64 years, and 65 years and over.

DATA SOURCE: National Health Interview Survey, January–September 2006. Data are based on household interviews of a sample of the civilian noninstitutionalized population.