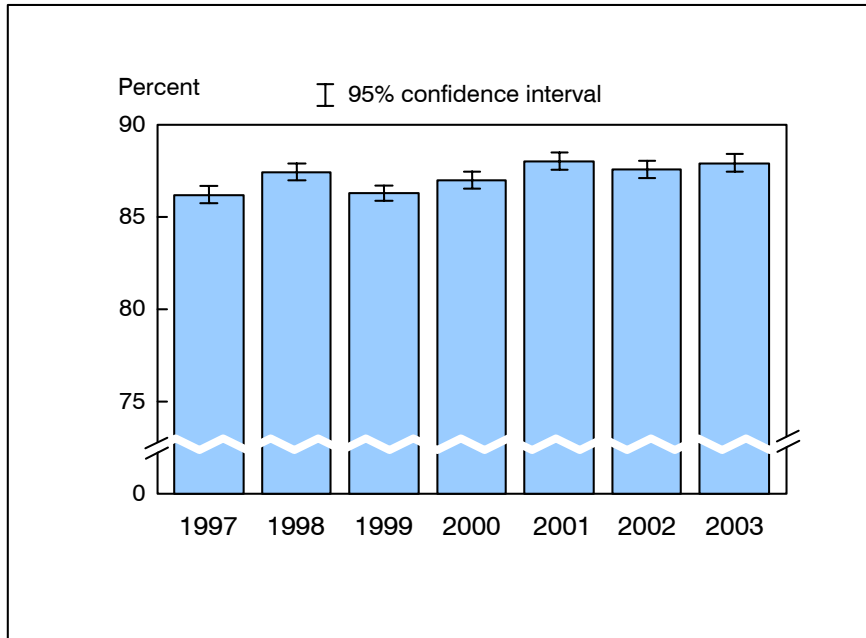


**Figure 2.1. Percent of persons of all ages with a usual place to go for medical care: United States, 1997-2003**



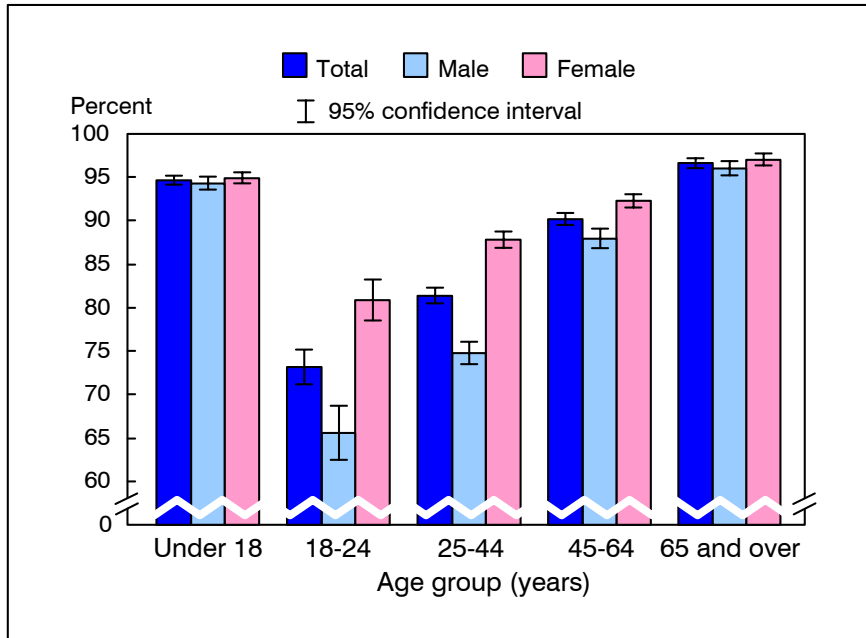
NOTES: The usual place to go for medical care does not include a hospital emergency room. The analyses excluded persons with unknown usual place to go for medical care (about 0.6% of respondents each year). CI is confidence interval. Beginning with the 2003 data, the National Health Interview Survey transitioned to weights derived from the 2000 census. In this Early Release, estimates for 2000-02 were recalculated using weights derived from the 2000 census. See "About This Release" and appendix tables in this release for more details.

DATA SOURCE: Sample Adult and Sample Child Core components of the 1997-2003 National Health Interview Surveys.

■ In 2003, the percent of persons who had a usual place to go for medical care was 87.9% (95% CI = 87.4%-88.4%), which was similar to the 2002 estimate of 87.6%.

■ The annual percent of persons of all ages who had a usual place to go for medical care was 86.2% in 1997, 87.4% in 1998, 86.3% in 1999, 87.0% in 2000, 88.0% in 2001, 87.6% in 2002, and 87.9% in 2003.

**Figure 2.2. Percent of persons of all ages with a usual place to go for medical care, by age group and sex: United States, 2003**

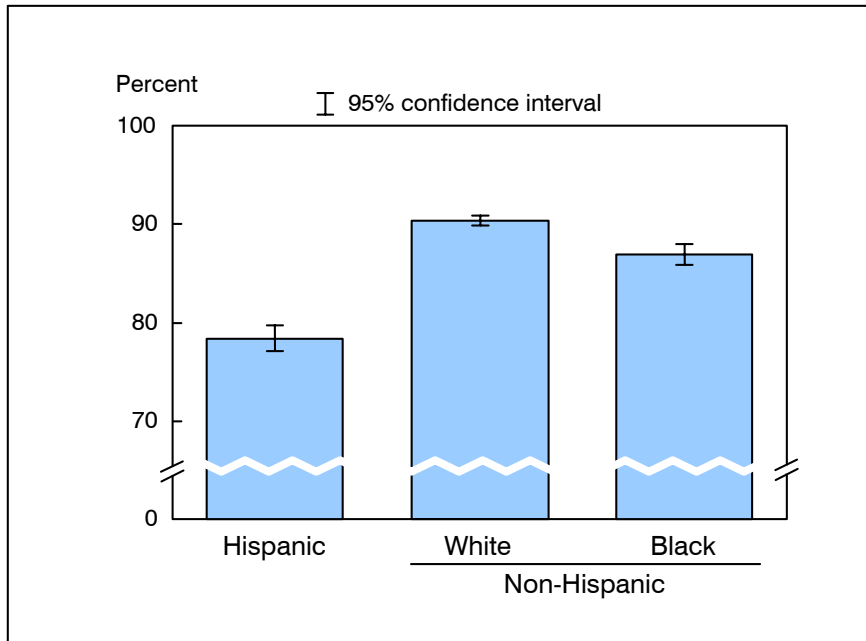


NOTES: The usual place to go for medical care does not include a hospital emergency room. The analyses excluded 229 persons (0.5%) with unknown usual place to go for medical care.

DATA SOURCE: Sample Adult and Sample Child Core components of the 2003 National Health Interview Survey.

- Of the five age groups, persons aged 18-24 years were least likely to have a usual place to go for medical care. Children under age 18 years were more likely than adults aged 18-64 years, but less likely than adults aged 65 years and over to have a usual place to go for medical care.
- For adults aged 18-64 years, men were less likely than women to have a usual place to go for medical care.
- Among those aged 18 years and over, the percent of persons having a usual place to go for medical care increased with age.

**Figure 2.3. Age-sex-adjusted percent of persons of all ages with a usual place to go for medical care, by race/ethnicity: United States, 2003**



NOTES: The usual place to go for medical care does not include a hospital emergency room. The analyses excluded 229 persons (0.5%) with unknown usual place to go for medical care. Estimates are age-sex-adjusted to the 2000 projected U.S. standard population using five age groups: under 18 years, 18-24 years, 25-44 years, 45-64 years, and 65 years and over.

DATA SOURCE: Sample Adult and Sample Child Core components of the 2003 National Health Interview Survey.

- After adjusting for age and sex, the percent of persons with a usual place to go for medical care was 78.3% for Hispanic persons, 90.3% for non-Hispanic white persons, and 86.9% for non-Hispanic black persons.
- Of the three race/ethnicity groups, Hispanic persons were least likely to have a usual place to go for medical care.

## Data tables for figures 2.1-2.3:

**Data table for figure 2.1. Percent of persons of all ages with a usual place to go for medical care: United States, 1997-2003**

Year	Percent (95% Confidence Interval)	
	Crude <sup>1</sup>	Age-adjusted <sup>2</sup>
<b>1997</b>	86.2 (85.8-86.7)	86.3 (85.9-86.7)
<b>1998</b>	87.4 (86.9-87.8)	87.4 (87.0-87.9)
<b>1999</b>	86.3 (85.9-86.7)	86.4 (86.0-86.8)
<b>2000</b>	87.0 (86.5-87.4)	87.0 (86.6-87.4)
<b>2001</b>	88.0 (87.6-88.5)	88.0 (87.6-88.5)
<b>2002</b>	87.6 (87.1-88.0)	87.6 (87.1-88.0)
<b>2003</b>	87.9 (87.4-88.4)	87.9 (87.4-88.4)

<sup>1</sup>Crude estimates are presented in the graph.

<sup>2</sup>Estimates for this Healthy People 2010 Leading Health Indicator are age-adjusted to the 2000 projected U.S. standard population using five age groups: under 18 years, 18-24 years, 25-44 years, 45-64 years, and 65 years and over.

**Data table for figure 2.2. Percent of persons of all ages with a usual place to go for medical care, by age group and sex: United States, 2003**

Age and sex	Percent	95% confidence interval
<b>Under 18 years</b>		
Total	94.6	94.1-95.1
Men	94.3	93.6-95.1
Women	94.9	94.3-95.5
<b>18-24 years</b>		
Total	73.2	71.2-75.2
Men	65.6	62.5-68.7
Women	80.8	78.4-83.1
<b>25-44 years</b>		
Total	81.4	80.5-82.2
Men	74.8	73.5-76.1
Women	87.8	86.8-88.7
<b>45-64 years</b>		
Total	90.2	89.5-90.9
Men	88.0	86.8-89.1
Women	92.3	91.5-93.1
<b>65 years and over</b>		
Total	96.6	96.0-97.2
Men	96.0	95.2-96.8
Women	97.0	96.3-97.7
<b>All ages: Age-adjusted<sup>1</sup></b>		
Total	87.9	87.4-88.4
Men	84.6	83.9-85.2
Women	91.1	90.6-91.6

<sup>1</sup>Crude estimates are presented in the graph. Estimates for this Healthy People 2010 Leading Health Indicator are age-adjusted to the 2000 projected U.S. standard population using five age groups: under 18 years, 18-24 years, 25-44 years, 45-64 years, and 65 years and over.

**Data table for figure 2.3. Adjusted percent of persons of all ages with a usual place to go for medical care, by race/ethnicity: United States, 2003**

Race/ethnicity	Percent (95% confidence interval)	
	Age-sex-adjusted <sup>1</sup>	Age-adjusted <sup>2</sup>
<b>Hispanic or Latino</b>	78.3 (77.0-79.6)	78.1 (76.8-79.4)
<b>Not Hispanic or Latino</b>		
<b>White, single race</b>	90.3 (89.8-90.8)	90.3 (89.9-90.8)
<b>Black, single race</b>	86.9 (85.8-87.9)	87.2 (86.2-88.2)

<sup>1</sup>Age-sex-adjusted estimates are presented in the graph. Estimates are age-sex-adjusted to the 2000 projected U.S. standard population using five age groups: under 18 years, 18-24 years, 25-44 years, 45-64 years, and 65 years and over.

<sup>2</sup>Estimates for this Healthy People 2010 Leading Health Indicator are age-adjusted to the 2000 projected U.S. standard population using five age groups: under 18 years, 18-24 years, 25-44 years, 45-64 years, and 65 years and over.