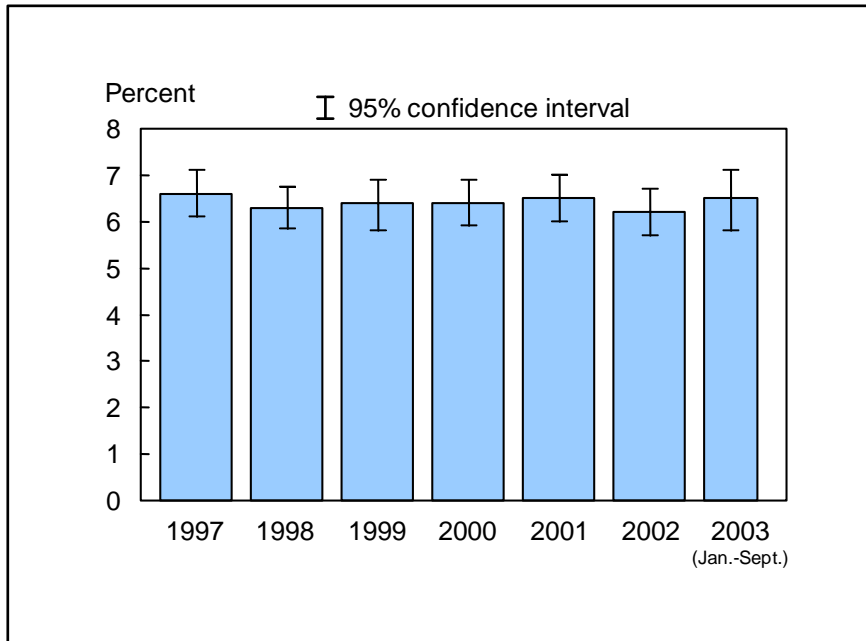


Figure 12.1. Percent of adults aged 65 years and over who need help with personal care from other persons: United States, 1997-2003

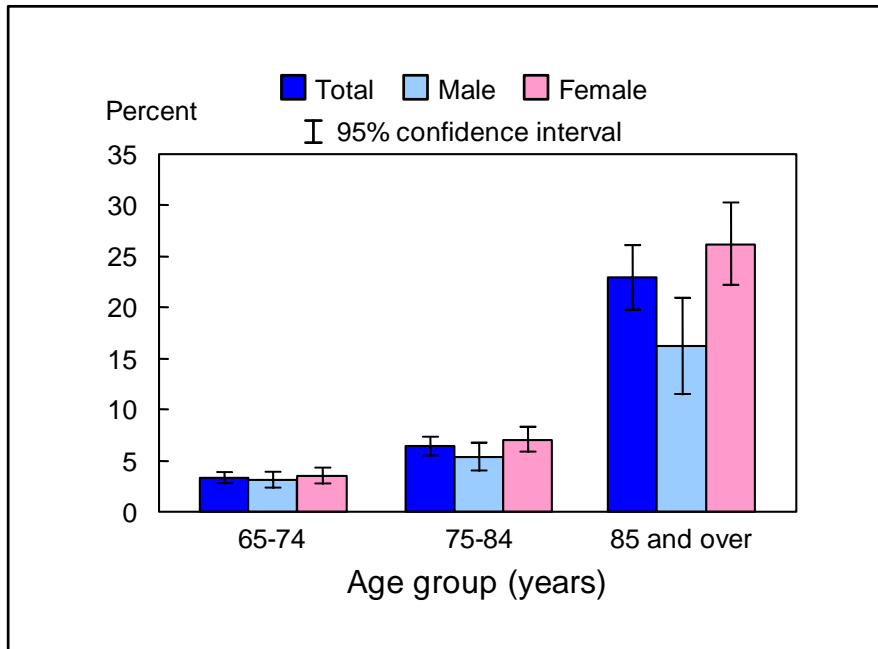


NOTES: Personal care needs or activities of daily living (ADL) include such things as eating, bathing, dressing, or getting around inside the person's home. The analyses excluded persons with unknown information on personal care needs (about 0.01% of respondents each year). CI is confidence interval. Beginning with the 2003 data, the National Health Interview Survey transitioned to weights derived from the 2000 census. In this Early Release, estimates for 2000-02 were recalculated using weights derived from the 2000 census. See "About This Release" and appendix tables in this release for more details.

DATA SOURCE: Family Core component of the 1997-2003 National Health Interview Surveys. The estimate for 2003 was based on data collected from January through September.

- From January through September 2003, 6.5% (95% CI = 5.8%-7.1%) of adults aged 65 years and over needed help with personal care from other persons. The estimate was not significantly different from the 2002 estimate of 6.2%.
- From 1997 through 2002, there was no significant time trend in the annual percent of adults who needed help with personal care from other persons (6.6% in 1997, 6.3% in 1998, 6.4% in 1999, 6.4% in 2000, 6.5% in 2001, and 6.2% in 2002).

Figure 12.2. Percent of adults aged 65 years and over who need help with personal care from other persons, by age group and sex: United States, January-September 2003

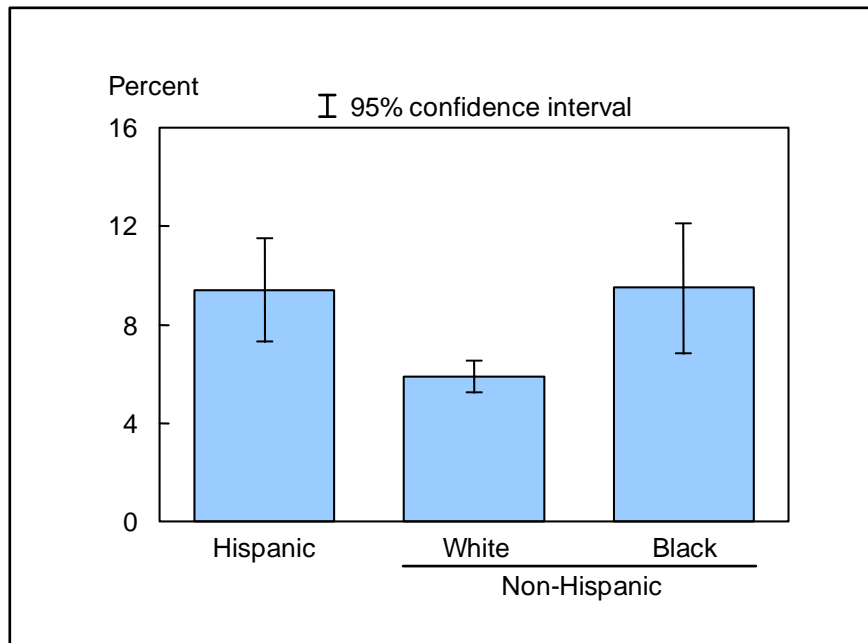


NOTE: Personal care needs or activities of daily living (ADL) include such things as eating, bathing, dressing, or getting around inside the person's home. The analyses excluded one person (0.01%) with unknown information on personal care needs.

DATA SOURCE: Based on data collected from January through September in the Family Core component of the 2003 National Health Interview Survey.

- For both sexes combined, adults aged 85 years and over were more than seven times as likely as adults aged 65-74 years old to need help with personal care from other persons (22.9 vs. 3.3%).
- For adults aged 85 years and over, the percent of women who needed help with personal care from other persons was higher than that for men.

Figure 12.3. Age-sex-adjusted percent of adults aged 65 years and over who need help with personal care from other persons, by race/ethnicity: United States, January-September 2003



NOTES: Personal care needs or activities of daily living (ADL) include such things as eating, bathing, dressing, or getting around inside the person's home. The analyses excluded one person (0.01%) with unknown information on personal care needs. Estimates are age-sex-adjusted to the year 2000 projected U.S. standard population using three age groups: 65-74 years, 75-84 years, and 85 years and over.

DATA SOURCE: Based on data collected from January through September in the Family Core component of the 2003 National Health Interview Survey.

- The age-sex-adjusted percent of persons who needed help with personal care from other persons was 9.4% for Hispanic persons, 5.9% for non-Hispanic white persons, and 9.5% for non-Hispanic black persons.
- The percent of those who needed help with personal care from other persons was higher for Hispanic persons and non-Hispanic black persons than for non-Hispanic white persons.

Data tables for figures 12.1-12.3:

Data table for figure 12.1. Percent of adults aged 65 years and over who need help with personal care from other persons: United States, 1997-2003

Year	Percent	95% confidence interval
1997	6.6	6.1-7.1
1998	6.3	5.9-6.8
1999	6.4	5.8-6.9
2000	6.4	5.9-6.9
2001	6.5	6.0-7.0
2002	6.2	5.7-6.7
2003 (Jan.-Sept.)	6.5	5.8-7.1

Data table for figure 12.2. Percent of adults aged 65 years and over who need help with personal care from other persons, by age group and sex: United States, January-September 2003

Age and sex	Percent	95% confidence interval
65-74 years		
Total	3.3	2.8-3.9
Men	3.1	2.3-3.9
Women	3.5	2.7-4.3
75-84 years		
Total	6.4	5.4-7.3
Men	5.3	4.0-6.7
Women	7.0	5.8-8.3
85 years and over		
Total	22.9	19.7-26.1
Men	16.2	11.5-20.9
Women	26.2	22.2-30.2

Data table for figure 12.3. Age-sex-adjusted percent of adults aged 65 years and over who need help with personal care from other persons, by race/ethnicity: United States, January-September 2003

Race/ethnicity	Percent ¹	95% confidence interval
Hispanic or Latino	9.4	7.3-11.5
Not Hispanic or Latino		
White, single race	5.9	5.3-6.6
Black, single race	9.5	6.8-12.1

¹Estimates are age-sex-adjusted to the year 2000 projected U.S. standard population using three age groups: 65-74 years, 75-84 years, and 85 years and over.