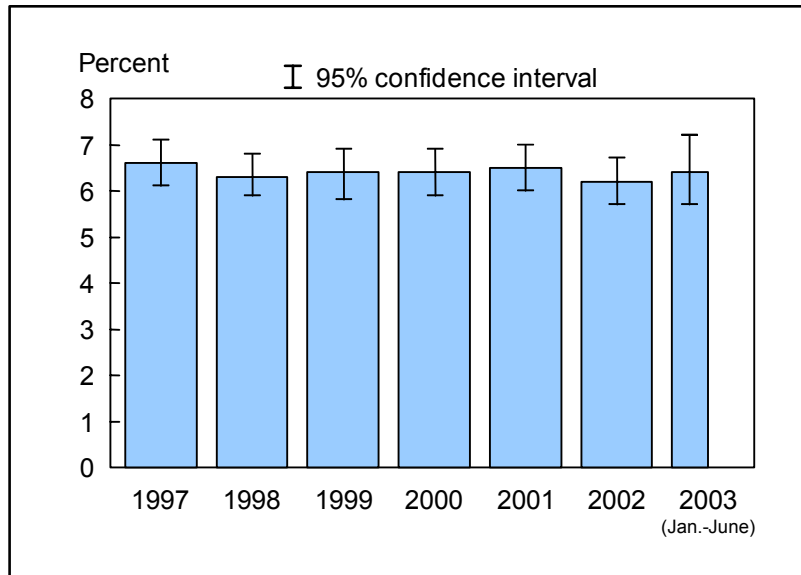


**Figure 12.1. Percent of adults aged 65 years and over who need help with personal care from other persons: United States, 1997-2003**

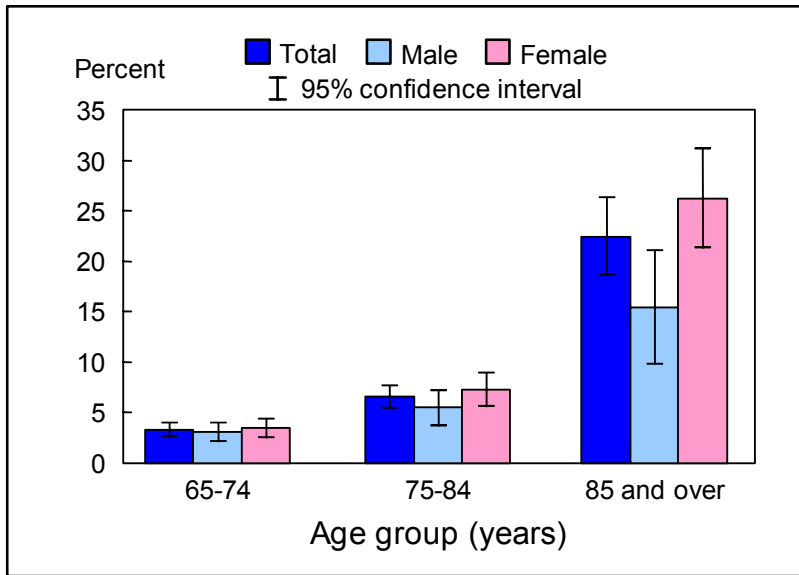


NOTES: Personal care needs or activities of daily living (ADL) include such things as eating, bathing, dressing, or getting around inside the person's home. The analyses excluded persons with unknown information on personal care needs (about 0.1% of respondents each year). CI is confidence interval. Beginning with the 2003 data, the National Health Interview Survey transitioned to weights derived from the 2000 census. In this Early Release, estimates for 2000-02 were recalculated using weights derived from the 2000 census. See "About This Release" and appendix tables in this release for more details.

DATA SOURCE: Family Core component of the 1997-2003 National Health Interview Surveys. The estimate for 2003 was based on data collected from January through June.

- From January through June 2003, 6.4% (95% CI = 5.7%-7.2%) of adults aged 65 years and over needed help with personal care from other persons. The estimate was not significantly different from the 2002 estimate of 6.2%.
- There was no significant time trend in the annual percent of adults who needed help with personal care from other persons (6.6% in 1997, 6.3% in 1998, 6.4% in 1999, 6.4% in 2000, 6.5% in 2001, and 6.2% in 2002).

**Figure 12.2. Percent of adults aged 65 years and over who need help with personal care from other persons, by age group and sex: United States, January-June 2003**



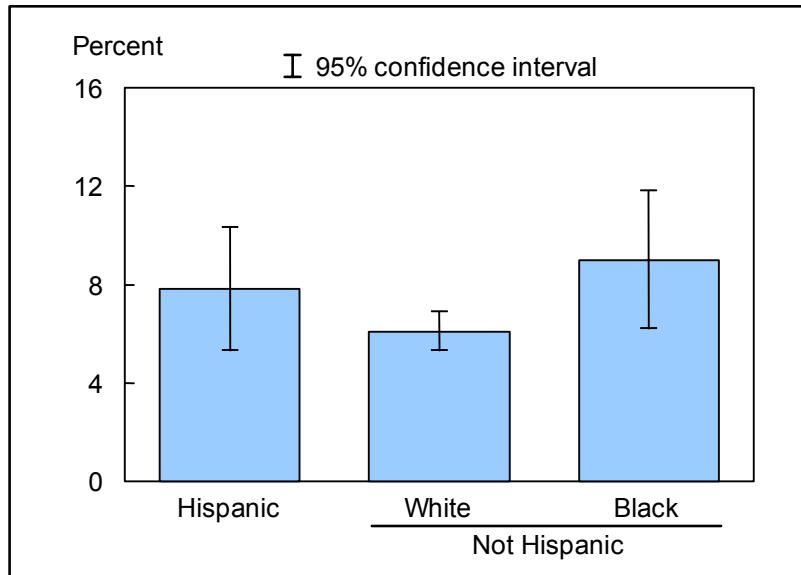
NOTE: Personal care needs or activities of daily living (ADL) include such things as eating, bathing, dressing, or getting around inside the person's home.

DATA SOURCE: Based on data collected from January through June in the Family Core component of the 2003 National Health Interview Survey.

■ For both sexes combined, adults aged 85 years and over were more than seven times as likely as adults aged 65-74 years old to need help with personal care from other persons (22.4 vs. 3.3%).

■ For adults aged 85 years and over, the percent of women who needed help with personal care from other persons was higher than that for men.

**Figure 12.3. Age- sex-adjusted percent of adults aged 65 years and over who need help with personal care from other persons, by race/ethnicity: United States, January-June 2003**



NOTES: Personal care needs or activities of daily living (ADL) include such things as eating, bathing, dressing, or getting around inside the person's home. Estimates are age- sex-adjusted to the year 2000 projected U.S. standard population using three age groups: 65-74 years, 75-84 years, and 85 years and over.

DATA SOURCE: Based on data collected from January through June in the Family Core component of the 2003 National Health Interview Survey.

- The age- sex-adjusted percent of persons who needed help with personal care from other persons was 7.8% for Hispanic persons, 6.1% for non-Hispanic white persons, and 9.0% for non-Hispanic black persons.
- The percent of non-Hispanic black persons who needed help with personal care from other persons was higher than that for non-Hispanic white persons.

## Data tables for figures 12.1-12.3:

**Data table for figure 12.1. Percent of adults aged 65 years and over who need help with personal care from other persons: United States, 1997-2003**

Year	Percent	95% confidence interval
1997	6.6	6.1-7.1
1998	6.3	5.9-6.8
1999	6.4	5.8-6.9
2000	6.4	5.9-6.9
2001	6.5	6.0-7.0
2002	6.2	5.7-6.7
2003 (January-June)	6.4	5.7-7.2

**Data table for figure 12.2. Percent of adults aged 65 years and over who need help with personal care from other persons, by age group and sex: United States, January-June 2003**

Age and sex	Percent	95% confidence interval
<b>65-74 years</b>		
Total	3.3	2.6-4.0
Men	3.1	2.1-4.0
Women	3.5	2.5-4.4
<b>75-84 years</b>		
Total	6.6	5.4-7.7
Men	5.5	3.7-7.2
Women	7.3	5.6-8.9
<b>85 years and over</b>		
Total	22.4	18.6-26.3
Men	15.4	9.8-21.0
Women	26.2	21.3-31.1

**Data table for figure 12.3. Age- sex-adjusted percent of adults aged 65 years and over who need help with personal care from other persons, by race/ethnicity: United States, January-June 2003**

Race/ethnicity	Percent <sup>1</sup>	95% confidence interval
Hispanic or Latino	7.8	5.3-10.3
<b>Not Hispanic or Latino</b>		
White, single race	6.1	5.3-6.9
Black, single race	9.0	6.2-11.8

<sup>1</sup>Estimates are age- sex-adjusted to the projected 2000 U.S. standard population using three age groups: 65-74 years, 75-84 years, and 85 years and over.