

## Advance Report of Final Natality Statistics, 1983

### Births and birth rates

There were 3,638,933 registered live births in the United States during 1983. This is a 1-percent decline from the 3,680,537 births registered in 1982 (table 1) and the first year

for which there has been a reduction in the annual number of births since 1975. Provisional data for 1984 indicate an increase of about 2 percent over the final total for 1983, however.

The birth and fertility rates also declined between 1982 and 1983 (table 1 and figure 1). The birth rate was 15.5 live

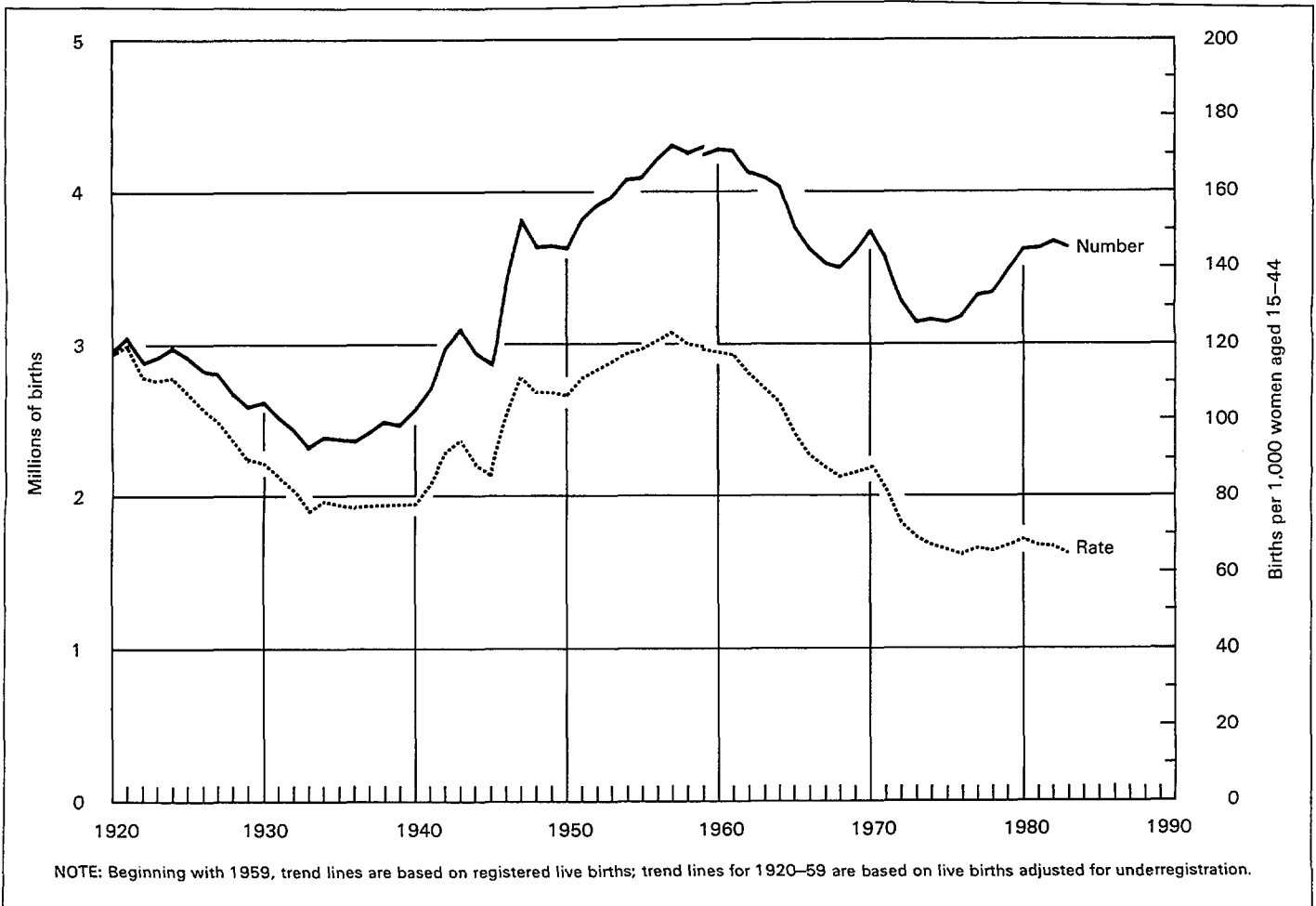


Figure 1. Live births and fertility rates: United States, 1920-83

births per 1,000 population in 1983, 3 percent below the 1982 rate of 15.9. A 1-percent increase in the birth rate is indicated for 1984 according to provisional statistics.

The fertility rate was 65.8 live births per 1,000 women aged 15–44 years, 2 percent lower than the rate in 1982 of 67.3. Provisional statistics suggest an increase of less than 1 percent in the fertility rate for 1984.

There were declines of 2–3 percent in the birth rates for

women in the age groups 15–29 years. These declines were generally larger than those observed in recent years and brought their rates to levels not observed since 1978. The birth rate for women aged 40–44 years also declined by 3 percent. The only age-specific rates to increase were those for women aged 30–34 years (up 1 percent) and 35–39 years (up 5 percent). Rates for women aged 10–14 and 45–49 years were unchanged as they have been for the past few years. (See figure 2 for birth

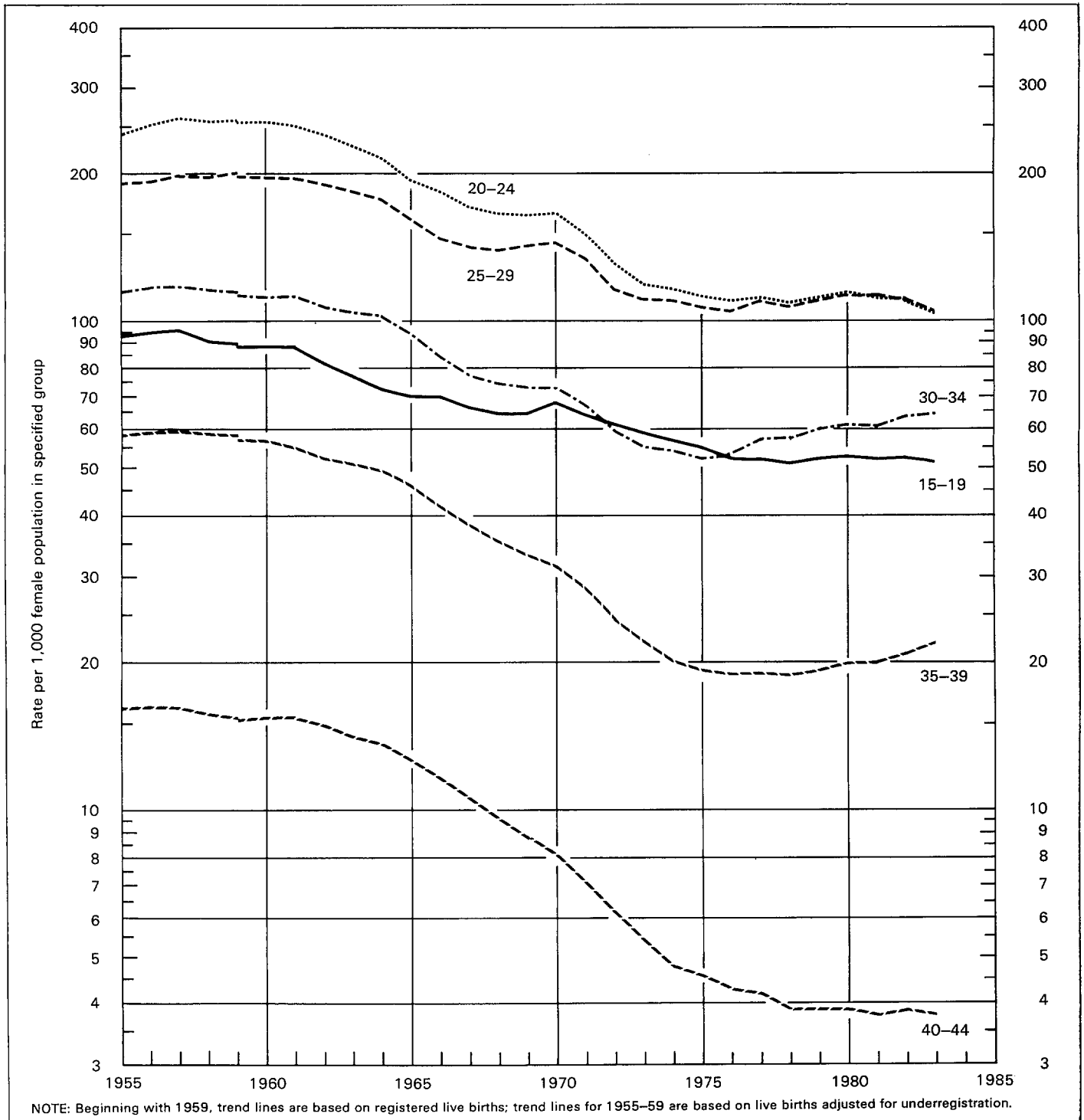


Figure 2. Birth rates by age of mother: United States, 1955–83

rates by age of mother and tables 2–4 for births and birth rates by age of mother.)

Although rates for women in their thirties continued to increase in 1983, this increase was at a somewhat slower pace than observed for the 1981–82 period. Since 1975, the birth rate for women aged 30–34 years increased 24 percent while the rate for women aged 35–39 years increased 13 percent. These increases occurred while the birth rates for teenagers 15–19 years old declined 7 percent and the rate for women aged 20–24 years fell 4 percent. The rate for women aged 25–29 years changed relatively little overall during this 8-year period. As a result of these differing trends in age-specific birth rates, there has been a steady shift in childbearing to later ages. The proportion of births occurring to mothers under 20 years dropped from 19 percent in 1975 to 14 percent in 1983, while the proportion of births occurring to mothers aged 30 years and older increased from 17 to 23 percent during these years.

Birth rates by live-birth order declined between 1982 and 1983 for first births (3 percent), second births (2 percent), third births (1 percent), and fourth births (3 percent). Rates for fifth and higher order births were unchanged (figure 3 and table 5). The 3-percent decline in the first birth rate, a key indicator of family formation, was the sharpest drop in that rate since 1973.

As in the past three years, the overall decline in the first birth rate conceals very different trends in these rates by age of mother. Between 1982 and 1983 the first birth rate declined by 2 percent for teenagers 15–19 years of age, by 3 percent for women aged 20–24 years, and by 1 percent for women aged 25–29 years. However, the rate for women aged 30–34 years rose 6 percent while the rate for women 35–39 years increased 12 percent. First birth rates for women aged 10–14 years and for women in their forties did not change.

Although the increases in first birth rates for women in their thirties were not as substantial as those measured between 1981 and 1982, they were nonetheless notable in that they occurred in spite of the general decline in fertility observed for women of other ages. The tendency to delay childbearing, first noted in the early 1970's, is well established for many American families.<sup>1</sup> The first birth rate for women in their early thirties more than doubled between 1972 and 1983, increasing from 7.0 first births per 1,000 women aged 30–34 years to 15.4. This rate for women aged 35–39 years has also more than doubled during this period, from 1.8 to 3.7.

Second order birth rates increased between 1982 and 1983 only for women aged 30–44 years. The rate for women aged 30–34 years increased 2 percent, while the rate for women aged 35–39 rose 12 percent. Birth rates for second order births for women aged 15–29 declined 2–3 percent while the rates for women of other ages did not change. This pattern of large increases in rates of second births for women in their late thirties is consistent with that observed for first birth rates. Second-order birth rates for women aged 35–39 years increased by 84 percent between 1972 and 1983.

The fertility rates for both white and black women declined between 1982 and 1983. The rate for white women fell 2 percent, from 63.9 to 62.4 live births per 1,000 women aged 15–

44 years. The rate declined by 3 percent for black women, from 84.1 to 81.7. The patterns of change in age-specific rates were similar for white and black women except that the tendency to delay childbearing was more evident for white women. In addition, the declines usually were steeper for black than for white women.

The trend to delayed childbearing observed for American women since the early 1970's has been intensified in recent years by a tendency toward even greater postponement of first-time childbearing. First birth rates for women under 30 years have generally been falling since 1980 while the rate for women aged 30–34 years rose 20 percent during these years, and the rate for women aged 35–39 years increased 42 percent. Partly as a consequence, second birth rates have increased much more since 1980 for women in their late thirties than for women aged 30–34 years, 36 percent compared with 9 percent. Levels of childlessness among women in their thirties are higher than they have been for more than 30 years. For example, nearly one quarter (24 percent) of women aged 30–34 years as of January 1, 1984, had not had any children. As recently as January 1, 1970, this proportion was only 12 percent. Other data from the National Center for Health Statistics indicate that the proportions of women whose ability to have children is impaired rise sharply with advancing age.<sup>2</sup> As a result, continued delay of childbearing by these women may reduce the number of children they can ultimately have and may also result in a greater level of unintended childlessness.

The total fertility rate is a measure that indicates the number of births that 1,000 women would have if they experienced throughout their childbearing years the set of age-specific birth rates observed in a given calendar year. It is a hypothetical measure that shows the implications of current levels of fertility for completed family size. Reflecting the declines in age-specific birth rates observed in 1983, the total fertility rate declined from 1,828.5 in 1982 to 1,802.5 in 1983. This is the number of children that a group of 1,000 women would bear if they were to experience the age-specific birth rates of 1983 over their entire childbearing period. The rate of 1,802.5 is the lowest observed since 1978 and is 15 percent below the level considered necessary for a given generation to exactly replace itself in the population (2,110.0). The total fertility rate for white women, 1,717.5, was also lower than it has been since 1979 and well below replacement level. The total fertility rate for black women was 2,150.5, the lowest rate ever observed and only slightly above replacement level.

### Geographic division and State

The total number of births increased in only two geographic divisions in 1983 and declined in seven (table 6). The increases of up to 1 percent were in the New England and Pacific Divisions. Declines of 1 percent or less were measured in the Middle Atlantic, South Atlantic, and West South Central Divisions. The number of births declined 2 percent in the Mountain division and 3 percent in the East North Central, West North Central, and East South Central Divisions. There were

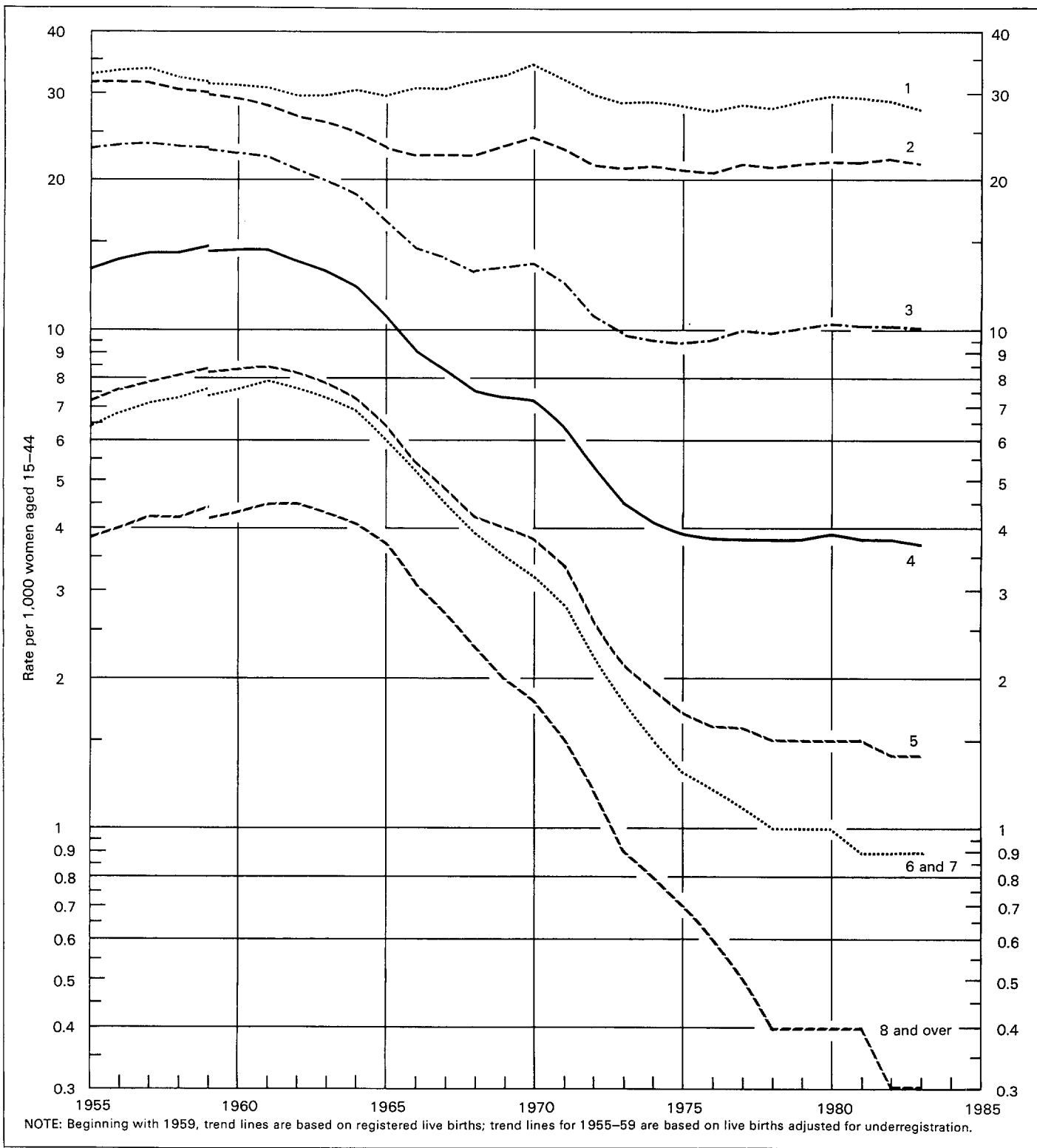


Figure 3. Birth rates by live-birth order: United States, 1955-83

increases in the number of births for 12 States and the District of Columbia, declines for 37 States, and no change for 1 State (Maine).

The birth rate per 1,000 population declined in all geographic divisions except New England where there was no

change. The declines were up to 1 percent in three divisions (Middle Atlantic, South Atlantic, and Pacific) and 3-4 percent in five divisions (East North Central, West North Central, East South Central, West South Central, and Mountain). Among States there were increases in birth rates only in Connecticut,

Florida, Rhode Island, and the District of Columbia. Rates fell in 42 States. The declines were 1 percent in 6 States, 2 percent in 8 States, 3 percent in 15 States, and 4–8 percent in 13 States. Most of the larger declines were observed in States in the East South Central, West South Central, and Mountain Divisions. Birth rates did not change in five States (Massachusetts, New York, New Jersey, Maryland, and Hawaii).

The fertility rate per 1,000 women aged 15–44 years declined in all nine geographic divisions. The declines were 1 percent in the New England, Middle Atlantic, and Pacific Divisions, 2–3 percent in the East North Central, West North Central, and South Atlantic Divisions, and 4 percent in the East South Central, West South Central, and Mountain Divisions. Fertility rates by State varied widely, ranging from 54.0 (Massachusetts) to 107.0 (Utah). These rates increased in only three States (Connecticut, Florida, and Hawaii) and the District of Columbia. The rate declined by up to 1 percent in 10 States, by 2 percent in 9 States, by 3 percent in 13 States, and by 4–7 percent in 15 States.

### Sex ratio

The sex ratio at birth in 1983 was 1,052 male births per 1,000 female births, compared with 1,051 for 1982 (table 7). There has been very little annual variation in the ratio, with a range of 1,051 to 1,055 since 1968.

The ratio for white births was 1,057, higher than the 1982 ratio of 1,054, but well within the annual range of 1,053 to 1,059 observed since the mid 1960's. The sex ratio for black births was 1,028, below the 1982 ratio of 1,033, but within the range of 1,024 to 1,033 measured since 1970. Ratios for births of other specified racial groups typically show more year-to-year variation.

### Month of birth

A consistent pattern in the monthly occurrence of births has been observed for many years with the peak months being July, August, and September (table 8). Removal of the seasonal component from the monthly birth and fertility rates facilitates the observation of the underlying trends. Seasonally adjusted birth and fertility rates in the first half of 1983 were somewhat higher than those in the last half. Rates were highest during the early spring months of March and April. Provisional data for 1984 suggest a modest continuation of the 1983 pattern; rates in the first 6 months were slightly higher on the average than those in the last 6 months.

### Day of week

There is a distinctive pattern in the occurrence of births by day of the week. Deliveries are concentrated on Mondays through Fridays, with the peak number occurring on Tuesdays, and corresponding deficits are observed for weekends, particu-

larly Sundays (table 9). Additionally, holidays such as New Year's Day, Memorial Day, Independence Day, Labor Day, Thanksgiving, and Christmas are associated with fewer births and the deficit usually extends to the days around the holiday.

The index of occurrence of births suggests the magnitude of the pattern. The index is defined as the ratio of the average number of births occurring on a given day of the week to the average daily number of births for the year, multiplied by 100. Thus, an index of 100.0 represents the daily average number of births, 9,970 in 1983. For the peak day of occurrence, Tuesday, the index was 107.6, compared with an index of 85.6 for Sunday births. Another way to describe this variation is to compare the average number of births by day. In this example, the average number of births occurring on Tuesdays, 10,730, was 26 percent greater than the average number of births occurring on Sundays, 8,532.

This pattern appears to be associated with the proportion of deliveries by cesarean section. Related unpublished data from the 1980 National Natality Survey, conducted by the National Center for Health Statistics, indicate that the weekend deficit is much greater for births delivered by cesarean section, both primary and repeat, than for births delivered vaginally.

### Place of delivery and attendant at birth

In 1983, 98.9 percent of all births occurred in hospitals, a slight decline from 99.0 percent in 1982. There were also slight reductions in the proportions of in-hospital deliveries among white and black births. In 1983, 98.8 percent of white infants and 99.3 percent of black infants were born in hospitals. Although physicians were reported as the attendant for the vast majority of all hospital deliveries, 97.7 percent, this proportion has declined since 1980–81, when it was 98.1 percent. Midwife-attended deliveries in hospitals continued to increase, totaling 71,617 in 1983, 2.0 percent of all in-hospital births, compared with 1.7 percent in 1982 and 1.6 percent in 1981. (See tables 10–12.)

Although the number of midwife-attended deliveries is still small, the 12-percent overall increase in these births in 1983 is more striking when viewed against the 1-percent decline in total births. There was a 7-percent increase in the number of midwife-attended births occurring in nonhospital settings, up from 14,375 in 1982 to 15,406 in 1983.

Midwives continued to attend greater numbers of both white and black births, but the increases were much larger for white births (14 percent) than for black births (6 percent). There was a 16-percent rise in midwife deliveries of white infants in hospitals and an 8-percent increase for black infants. Outside of hospitals, midwives attended 14,391 white births in 1983, a 9-percent increase over the 1982 figure (13,262) and a 183-percent increase over the number reported in 1975 (5,082). In contrast, midwives attended just 742 black births in nonhospital settings in 1983, a 15-percent reduction over the 1982 figure (877) and an 84-percent reduction since 1975 (4,602).

## Age of father

The birth rate for men in 1983 was 55.3 live births per 1,000 men aged 15–54 years, 2 percent below the rate for 1982 of 56.4. (Basic data are presented in table 13 and birth rates by age of father in table 14.) The rate for white men was 51.5 and for black men, 78.0. These rates were each 2 percent below the rates in 1982, 52.5 and 79.8, respectively.

The only age group to show an increase in the birth rate was 35–39 years, for which there was a 2-percent rise. Rates for men in age groups 15–19 through 30–34, 40–44, and 50–54 years declined by 2–4 percent. There was no change in the rate for men 45–49 years old. The 3-percent rise for men aged 35–39 is consistent with the 1–5 percent increases in rates for women aged 30–34 and 35–39 years, the only groups of women for whom there were increases.

Changes in rates for white men by age were nearly the same as the changes for men of all races combined, except for white men aged 50–54 years, for whom the rate was unchanged. There were increases of less than 2 percent in rates for black men aged 15–24 years. Rates for black men aged 25–34 years declined 4 percent. The rate for men aged 35–39 years was unchanged. There were declines of 1–6 percent in rates for men aged 40–54 years.

## Weight at birth

The incidence of low birth weight increased for both white and black infants in 1983, and the racial differential remains substantial. In 1983, 5.7 percent of white infants and 12.6 percent of black infants weighed less than 2,500 grams (5 pounds 8 ounces) at birth; the figures for 1982 were 5.6 and 12.4 percent, respectively. The proportion of all babies weighing less than 2,500 grams was 6.8 percent in 1983, the same as in 1981 and 1982. The overall proportion of low weight infants did not change because the incidence of low birth weight for infants of other races (for example, Chinese and Japanese), a growing group, remained relatively low at 6.5 percent in 1983.

As has been true for many previous years, babies born to women aged 25–29 and 30–34 years were at least risk of low birth weight (5.9 percent in 1983). Infants born to teenagers and women in their forties were most likely to be of low birth weight, with a range of 8.4 percent for births to women 19 years of age and 8.6 percent for births to women aged 40–44 years to 14.5 percent for births to mothers under 15 years of age. Although the relative risk of low birth weight among age-of-mother groups stayed about the same in 1983, the absolute proportions increased between 1982 and 1983 for births to women through age 29 (except those to 16-year-old mothers). The proportions of infants of low birth weight did not change for babies born to mothers aged 30–44 years and declined for babies born to mothers aged 45–49 years (table 15).

The proportion of infants of very low weight, that is, those weighing less than 1,500 grams (3 pounds 5 ounces), was unchanged in 1983 compared with 1982, 1.2 percent. The proportions increased substantially for babies born to mothers

under 15 years and 45–49 years of age, and were relatively stable for babies born to mothers aged 15–44 years.

The median weight at birth was 3,370 grams in both 1982 and 1983, equivalent to 7 pounds 7 ounces. The medians for white and black births were also unchanged in 1983, 3,410 grams for white births (about 7 pounds 8 ounces) and 3,170 grams for black births (7 pounds).

The number and percent of infants of low birth weight by race for each State are shown in table 16. The percent low birth weight varies somewhat from State to State within each racial group. The interstate variation for black births is reduced when States with relatively few black births are excluded from the comparison.

A discussion of the impact of length of gestation on the incidence of low birth weight is included in a subsequent section of this report on period of gestation.

## Multiple births

Live births in multiple deliveries totaled 73,862 in 1983, a 1-percent increase over the number reported in 1982, 73,115. Multiple deliveries include twins, triplets, quadruplets, and higher order plural births. The vast majority, 98 percent, of plural births in 1983 as in previous years were live births in twin deliveries (72,287). The multiple birth ratio increased for the third consecutive year, from 19.9 live births in multiple deliveries per 1,000 total live births in 1982 to 20.3 in 1983, the highest ratio observed since 1960 (20.4).

Multiple birth ratios for both white and black births increased but the ratio for black births was still considerably higher than the ratio for white births, 24.5 compared with 19.6 in 1983.

There is a distinct pattern in the multiple birth ratios by age of mother, with ratios increasing from 12.4 for births to mothers under 15 years of age to 25.9 for births to women aged 35–39 years and then declining to 13.9 for births to women aged 45–49 years. Multiple birth ratios also increase as live-birth order advances up through fifth order births, and then the ratio declines for sixth and higher orders.

Several factors are probably associated with the recently increasing multiple birth ratios. One is the tendency for women to bear children at increasingly older ages. Another is the increased use of fertility drugs to enable previously childless couples to have children; women who have been treated with these drugs are more likely to have a multiple delivery.<sup>3</sup>

## Births to unmarried women

Unmarried women gave birth to 737,893 babies in 1983, 3 percent more than the number reported in 1982 (715,227). (See tables 16 and 17.) As in 1981 and 1982, increases occurred for both white (4 percent) and black (2 percent) unmarried women.

National statistics on births to unmarried women are derived from two sources. Marital status of the mother is reported

directly on the birth certificates of 41 States and the District of Columbia. For the remaining nine States, which lack such an item, marital status is inferred from a comparison of the child's and the parents' surnames. Since 1980, data from these two sources have been combined to produce national statistics.

The rate of childbearing by unmarried women increased 1 percent between 1982 and 1983, the same rate of increase as from 1981 to 1982. The 1983 rate was 30.4 live births per 1,000 unmarried women aged 15-44 years, compared with 30.0 in 1982. The rate in 1983 is the highest ever observed since this measure was first computed for the United States in 1940. Rates increased for women in all age groups except women aged 40-44 years, for whom there was a 7-percent decline. The increases were 3 percent for women aged 15-17 and 35-39 years, 2 percent for women 18-19 and 30-34 years, and 1 percent for women aged 20-24 and 25-29 years. Unmarried women aged 20-24 years continued to have the highest age-specific birth rate, as they have since 1970. In 1983 their rate was 42.0, followed closely by the rate for women aged 18-19 years, 41.0.

There has been a sharp reduction over the last decade in the differential between white and black women in the incidence of nonmarital childbearing. This results from the steady increase in the rate for unmarried white women simultaneous with a general decline in the rate for unmarried black women. Between 1982 and 1983 the birth rate for unmarried white women increased 3 percent from 18.8 to 19.3 while the rate for unmarried black women declined 2 percent, from 79.6 to 77.7 (table 18). Thus, although the nonmarital birth rate continues to be much higher for black than for white women, four times as high in 1983, the differential was even greater during the 1970's. In 1975, for example, the rate for unmarried black women was seven times the rate for comparable white women.

Trends in birth rates by age for unmarried white and black women are similar to the trends in the overall rates. Age-specific rates for unmarried white women through age 39 years increased 3-6 percent between 1982 and 1983, while rates for unmarried black women ages 15-34 and 40-44 years fell by less than 1 to 9 percent.

Changes in the numbers of births to unmarried women reflect changes in the rates of childbearing at various ages and changes in the number of unmarried women in the childbearing ages. As noted previously, the greatest increases in the rates were for teenagers 15-17 years and women aged 35-39 years. However, the number of teenagers 15-17 years fell 3 percent between 1982 and 1983, while the number of unmarried women aged 35-39 years increased 8 percent. As a result, the number of births to teenagers 15-17 years old fell 1 percent in spite of the rising rate, while the number of births to unmarried women 35-39 years increased 11 percent because of the combined impact of the increased rate and the growing number of women. In general, the increases in numbers of births to unmarried women aged 25-39 years (6-11 percent) are much more the result of the increases in the numbers of unmarried women in these age groups (5-8 percent) than of the increases (1-3 percent) in the rates.

Births to unmarried women continue to constitute a growing fraction of all births in the United States. The ratio of births to unmarried women per 1,000 total live births was 202.8 in 1983, 4 percent higher than in 1982 (194.3). In other words, 20 percent of all births occurred to unmarried women. The ratios increased for births to both white and black women, from 120.7 to 127.7 for white women and from 566.8 to 582.0 for black women. The numbers of births to unmarried women and ratios for each State by race are shown in table 16.

### Interval since last live birth

The length of time between successive births is calculated from the date of the last live birth and the date of the present birth. An item requesting the date of the mother's last live birth was included on the birth certificates of 49 States and the District of Columbia in 1983; the information was not available for Texas. Intervals between births are calculated for all second and higher order births (table 19).

There has been virtually no change in the proportions of births occurring at various intervals over the past several years. In each year from 1980 to 1983, 13 percent of all second and higher order births occurred within 18 months of the mother's previous live birth. There were slight declines in 1983 in the proportions of births occurring within 2 years of the previous birth, 27 percent, and within 3 years of the previous birth, 52 percent.

The racial differential in the occurrence of births at very short intervals has also been stable for several years. In 1983, as in 1980-82, 17 percent of black babies compared with 12 percent of white infants were born within 1½ years of their mother's previous live birth. Closely spaced births in turn are associated with higher levels of low birth weight and related health complications.<sup>4</sup> In 1983, for example, 9 percent of all infants born within 18 months of the mother's previous live birth were of low birth weight, nearly twice the proportion for infants born 24-36 months after the previous birth. Similarly, 10 percent of infants born within 18 months of the previous live birth had 1-minute Apgar scores less than 7, compared with 8 percent of infants born 24-36 months after the mother's previous birth. (See final section of text for discussion of Apgar scores.)

Some of the health risks associated with closely spaced births are related to the tendency for such births to be more frequent among young mothers than older mothers. In 1983, for example, 37 percent of second births to mothers aged 15-19 years followed the mother's first birth by less than 18 months, compared with 16 percent of births to mothers aged 20-24 years and 5 percent of births to mothers 30-34 years old.

### Educational attainment of mother and father

In 1983, 47 States and the District of Columbia reported the educational attainment of the parents on the birth certificate. Since 1980 there has been no change in the States re-

questing this information; California, Texas, and Washington do not collect this information.

There was no change in 1983 in the proportion of mothers who had completed at least a high school education, 78 percent. The proportion of fathers who were high school graduates increased from 83 to 84 percent between 1982 and 1983 (table 20). It is very likely that the educational attainment of fathers is somewhat overstated, however, because the information is not reported for a sizable fraction of the birth certificates (15 percent in 1983), most of which are for births to unmarried mothers. As shown in table 17 of this report, a substantial proportion of unmarried mothers, and presumably the fathers as well, are very young and thus have had less opportunity to have completed high school. If the educational attainment of these fathers were reported, it would probably reduce the percent of all fathers with at least a high school diploma.

The proportion of mothers who are college graduates increased from 15 percent in 1982 to 16 percent in 1983, while the proportion with 8 or fewer years of schooling stayed at 4 percent. There was a slight increase in 1983 in the median years of school completed by mothers, from 12.6 to 12.7 years.

The educational attainment of white and black mothers changed little in 1983; consequently the racial differential remains substantial. In 1983, 81 percent of white mothers compared with 66 percent of black mothers had completed high school. There is a greater differential for college graduates: 18 percent of white mothers compared with 7 percent of black mothers.

As in past years, mothers aged 30–34 years have completed the most years of schooling (table 21). The median years of school completed by these mothers was 14.1 in 1983, compared with 12.9 for mothers aged 25–29 years, 12.5 for those aged 20–24 years, and 11.4 for teenagers 15–19 years of age. Sizable gains in educational attainment were observed only for white women in their thirties with smaller gains measured for black women aged 35 years and older. The median for white mothers aged 30–34 years rose from 14.3 to 14.5 years, and for white mothers aged 35–39 years, from 13.6 to 14.1 years. The medians for black mothers increased from 12.5 to 12.6 for those aged 35–39 years and from 12.2 to 12.3 for mothers aged 40 years and older.

### Births for other race and national origin groups

The number of births to women in racial groups other than white and black changed relatively little in 1983. Between 1978 and 1982 there had been very substantial annual increases in the number of "Other Asian or Pacific Islander" births, reflecting the sizable population growth due to immigration among these groups. In 1983, there were 57,417 births classified as "Other Asian or Pacific Islander," a 2-percent increase over the number reported in 1982 (56,442). This category includes births to Asian Indian, Cambodian, Korean, Laotian, Thai, and Vietnamese persons but excludes Japanese, Chinese, Filipino, and Hawaiian births. Increases of 5 and 6 percent, respectively, were noted in the number of Chinese and Filipino

births between 1982 and 1983. The number of American Indian and Hawaiian births increased 1 and 3 percent, respectively, while there was virtually no change in the number of Japanese births.

Births to teenage mothers are relatively infrequent among Chinese, Japanese, Filipino, and Other Asian or Pacific Islander mothers (table 22). In 1983, teenage mothers accounted for 6 percent or less of the births in any of these groups, compared with 12 percent of white births, 24 percent of black births, 21 percent of American Indian births, and 17 percent of Hawaiian births. In contrast, mothers aged 30 years and older accounted for nearly one half of Chinese and Japanese births and one third or more of Filipino and Other Asian or Pacific Islander births, compared with 24 percent of white births, 17 percent of black and American Indian births, and 19 percent of Hawaiian births. The distributions of births by age of mother are generally consistent with the distributions by live-birth order (data are not shown in this report). High levels of teenage childbearing tend to be associated with higher completed fertility. Thus, for example, births of fourth and higher order are relatively frequent among black, American Indian, and Hawaiian mothers (14–17 percent) and comparatively few among Chinese, Japanese, and Filipino mothers (8 percent or less).

The levels of low birth weight among births of racial groups other than white and black ranged from 5.0 percent (Chinese births) to 7.3 percent (Hawaiian and Filipino births) (table 23). In recent years, the proportions of low weight infants (that is, those weighing less than 5½ pounds) among American Indian, Chinese, Japanese, and Other Asian or Pacific Islander births have been about the same level as for white births (5.7 percent in 1983) and substantially below the level for black births (12.6 percent).<sup>5</sup> The relatively favorable proportions of low birth weight among births to these groups probably reflect to a large extent the low incidence of teenage childbearing (except for American Indians); teenage mothers typically account for about 1 in 5 low-birth-weight infants.

### Month of pregnancy prenatal care began

The proportion of mothers who began prenatal care in the critical first trimester of pregnancy has remained the same for 5 years, 1979–83, at 76 percent. While there had been a steady increase in the receipt of early care during the decade 1969–79, from 68 to 76 percent, there has been no change since 1979.

Mothers whose first visit for prenatal care was delayed until the third trimester or who received no care at all constituted 6 percent of the total in 1983, an increase from the 5-percent level observed from 1978 to 1982. (Data for 1983 are presented in table 24.)

The proportion of white mothers receiving early care did not change between 1982 and 1983 (79 percent), while among black mothers there was a slight increase, from 61 to 62 percent. The racial differential therefore remains substantial. Receipt of delayed or no prenatal care was reported for 5 percent



of white mothers and 10 percent of black mothers in 1983, the same levels observed in 1982.

For mothers aged 17–24 years, there were declines of up to 1 percent between 1982 and 1983 in the proportion receiving early care while increases of up to 2 percent were measured for mothers under 16 years of age and 25 years and older. Conversely, proportions of women receiving delayed or no care increased by 1–5 percent for women through age 29 (except 15-year-old mothers). There was no change for women aged 30–34 years and declines of 1–5 percent for women aged 35 years and older.

A review of the data on inception of prenatal care tabulated by educational attainment of the mother shows that gains in receipt of early care were observed principally for women who were college graduates and, to a lesser extent, for women with some high school. Conversely, increases in the proportions of women with delayed or no prenatal care were measured for all women except those who had completed college, for whom there was no change. These findings are similar to those reported for the 1982 data year.

### Number of prenatal visits

The median number of visits made to obtain prenatal care by mothers having any care was 11.6 in 1983, compared with the median of 11.4 for 1981 and 1982. The medians increased for both white and black mothers, from 11.8 to 12.0 for white mothers and from 10.2 to 10.3 for black mothers. (Basic data are shown in table 25.) In 1983, 49 States and the District of Columbia reported the number of prenatal visits on their birth certificates; California did not report this information.

According to standards recommended by the American College of Obstetricians and Gynecologists, pregnant women should make about 13 visits for prenatal care during the course of a normal full-term pregnancy. The increases in the median visits are consistent with the steady increase in recent years in the proportion of mothers who had 13 or more visits. In 1983, 26.5 percent of mothers having any care made 13 or more prenatal care visits, compared with 25.1 percent in 1982 and 23.8 percent in 1980. Similar increases were measured in the proportions of white and black mothers making 13 or more visits. When the computation is restricted to women whose pregnancies were 40 weeks or longer, the proportions with 13 or more prenatal care visits were higher: 31.4 percent in 1983 compared with 29.9 percent in 1982 and 29.2 percent in 1980.

A number of factors appear to be associated with this trend toward increasing proportions of women making more prenatal care visits. One is the continued tendency toward delayed childbearing; older mothers make more visits than younger mothers. Another related factor is the steadily increasing educational attainment of mothers, which is highly correlated with receipt of prenatal care. For example, 16 percent of mothers giving birth in 1983 were college graduates compared with 14 percent in 1980.

The median number of prenatal care visits is closely related to the trimester of pregnancy during which prenatal care

begins (table 25). The earlier the care begins, the greater is the number of visits. In 1983, about 2½ times as many visits were made by women who began care in the first trimester (12.3) as compared with women whose care was delayed until the third trimester (4.8). There were increases between 1982 and 1983 in the median number of visits for women beginning care in each of the first two trimesters of pregnancy, consistent with the overall increase in the number of prenatal care visits.

### Period of gestation

The birth certificates of 49 States and the District of Columbia reported the first day of the mother's last normal menstrual period (LMP) in 1983; New Mexico did not request this information. The length of gestation for a given pregnancy can be determined by calculating the interval between the LMP date and the date of birth. Since 1981, the data on gestation have included records for which the gestation period is imputed because the day of the LMP was not reported. This procedure and its implications for the data are described in previous reports.<sup>6,7</sup>

In 1983, 9.6 percent of all babies were born preterm, that is, prior to 37 completed weeks of gestation (table 26). This proportion has risen steadily since 1981 (9.4 percent) and 1982 (9.5 percent). Seventy-five percent of all births in 1983 occurred at term, defined as 37–41 weeks of gestation. While there was no change between 1982 and 1983 in the proportion preterm among white infants (8.0 percent), the proportion preterm among black infants increased from 17.1 to 17.4 percent, thereby increasing the racial differential slightly.

The length of gestation has a significant effect on the likelihood that a baby will be of low birth weight. Among infants born prior to 37 weeks of gestation, 40.1 percent weighed less than 2,500 grams (5 pounds 8 ounces) compared with only 3.1 percent among babies born at 37 weeks or more gestation (term and postterm births).

When the birth weight and gestation data are examined by race, it is evident that the racial differential in low birth weight is confined primarily to babies born term and postterm. Among these infants, 6.0 percent of black births and 2.6 percent of white births were of low birth weight in 1983, the same proportions as in 1982. Among preterm births, the comparable proportions in 1983 were 39.5 percent for white and 42.3 percent for black births. These proportions increased from the 1982 levels (39.3 percent white, and 41.8 percent black), a factor that has tended to increase the overall risk of low birth weight, particularly for black infants.

### Apgar score

The Apgar score, a summary measure used to evaluate the newborn infant's overall physical condition at birth, is a composite evaluation of five factors. Each of the factors—the infant's heart rate, respiratory effort, muscle tone, irritability, and color—is assigned a value from 0 to 2. The overall score is the sum of the five values, with a score of 10 being optimum. In

1983, 46 States and the District of Columbia reported the scores at 1 and 5 minutes after birth.

The proportion of infants for whom high 1- and 5-minute Apgar scores (9 or 10) were reported continued to decline in 1983 as it has steadily since 1978 when the data first became available. In 1983, 43.0 percent of 1-minute scores and 87.2 percent of 5-minute scores were 9 or 10. While black infants were more likely than white infants to have high 1-minute scores (44.6 percent compared with 42.8 percent), the reverse was true for 5-minute scores: 85.0 percent of black babies and 87.7 percent of white babies had scores of 9 or 10 (table 27).

The 5-minute Apgar score is probably a better predictor of the infant's long-term health status and survival chances than is the 1-minute score. The pattern of 5-minute scores by age of the mother is similar to that for low birth weight (table 28).

That is, infants born to teenage mothers, particularly those aged 17 years and under, as well as infants born to women in their forties, are considerably more likely to have low scores than babies born to mothers of other ages. In 1983, the proportion of births having 5-minute Apgar scores less than 7 (indicating that the infant's status is moderately to severely depressed) declined from 4.2 percent for babies born to mothers under 15 years to 1.7 percent for births to women aged 25-29 years, and then increased to 2.9 percent for births to women aged 40 years and older.

The relationship of the 5-minute scores to age of mother for white and black births is similar to that for births of all races combined. The percent of births having scores below 7 is consistently higher for black than for white births and the racial differential is greatest for births to mothers in their thirties.

## References

- <sup>1</sup>National Center for Health Statistics, S. J. Ventura: Trends in first births to older mothers, 1971-79. *Monthly Vital Statistics Report*. Vol. 31, No. 2 Supp. DHHS Pub. No. (PHS) 82-1120. Public Health Service. Hyattsville, Md., May 1982.
- <sup>2</sup>National Center for Health Statistics, W. D. Mosher and W. F. Pratt: Reproductive impairments among married couples, United States. *Vital and Health Statistics*. Series 23, No. 11. DHHS Pub. No. (PHS) 83-1987. Public Health Service. Washington. U.S. Government Printing Office, Dec. 1982.
- <sup>3</sup>U.S. Food and Drug Administration, Metabolism and Endocrine Drug Products: Personal communication, Roger Eastep.
- <sup>4</sup>National Center for Health Statistics, E. Spratley and S. Taffel: Interval between births, United States, 1970-77. *Vital and Health Statistics*. Series 21, No. 39. DHHS Pub. No. (PHS) 81-1917. Public Health Service. Washington. U.S. Government Printing Office, Aug. 1981.
- <sup>5</sup>National Center for Health Statistics, S. Taffel: Characteristics of Asian births, United States, 1980. *Monthly Vital Statistics Report*. Vol. 32, No. 10 Supp. DHHS Pub. No. (PHS) 84-1120. Public Health Service. Hyattsville, Md., Feb 10, 1984.
- <sup>6</sup>National Center for Health Statistics, S. Taffel, D. Johnson, and R. Heuser: A method of imputing length of gestation on birth certificates. *Vital and Health Statistics*. Series 2, No. 93. DHHS Pub. No. (PHS) 82-1367. Public Health Service. Washington. U.S. Government Printing Office, May 1982.
- <sup>7</sup>National Center for Health Statistics: Advance report of final natality statistics, 1981. *Monthly Vital Statistics Report*. Vol. 32, No. 9 Supp. DHHS Pub. No. (PHS) 84-1120. Public Health Service. Hyattsville, Md., Dec. 1983.
- <sup>8</sup>National Center for Health Statistics, S. J. Ventura: Trends in teenage childbearing, United States, 1970-81. *Vital and Health Statistics*. Series 21, No. 41. DHHS Pub. No. (PHS) 84-1919. Public Health Service. Washington. U.S. Government Printing Office, Sept. 1984.
- <sup>9</sup>National Center for Health Statistics, S. Taffel: Midwife and out-of-hospital deliveries, United States. *Vital and Health Statistics*. Series 21, No. 40. DHHS Pub. No. (PHS) 84-1918. Public Health Service. Washington. U.S. Government Printing Office, Feb. 1984.
- <sup>10</sup>National Center for Health Statistics, B. Berkov: An evaluation of California's inferred birth statistics for unmarried women. *Vital and Health Statistics*. Series 2, No. 97. DHHS Pub. No. 85-1371. Public Health Service. Washington. U.S. Government Printing Office, Apr. 1985.
- <sup>11</sup>National Center for Health Statistics, S. J. Ventura: Births of Hispanic parentage, 1980. *Monthly Vital Statistics Report*. Vol. 32, No. 6 Supp. DHHS Pub. No. (PHS) 83-1120. Public Health Service. Hyattsville, Md., Sept. 1983.
- <sup>12</sup>National Center for Health Statistics, S. J. Ventura: Births of Hispanic parentage, 1981. *Monthly Vital Statistics Report*. Vol. 33, No. 8 Supp. DHHS Pub. No. (PHS) 85-1120. Public Health Service. Hyattsville, Md., Dec. 1984.
- <sup>13</sup>National Center for Health Statistics, S. J. Ventura: Births of Hispanic parentage, 1982. *Monthly Vital Statistics Report*. Vol. 34, No. 4 Supp. DHHS Pub. No. (PHS) 85-1120. Public Health Service. Hyattsville, Md., July 1985.
- <sup>14</sup>National Center for Health Statistics, S. Taffel: Birth and fertility rates for States, United States, 1980. *Vital and Health Statistics*. Series 21, No. 42. DHHS Pub. No. (PHS) 84-1920. Public Health Service. Washington. U.S. Government Printing Office, Sept. 1984.
- <sup>15</sup>U.S. Bureau of the Census: Estimates of the population of the United States, by age, sex, and race: 1980 to 1984. *Current Population Reports*. Series P-25, No 965. Washington. U.S. Government Printing Office, Mar. 1985.
- <sup>16</sup>U.S. Bureau of the Census: Preliminary estimates of the population of the United States, by age, sex, and race, 1970 to 1981. *Current Population Reports*. Series P-25, No. 917. Washington. U.S. Government Printing Office, July 1982.

## List of tables

1. Live births, birth rates, and fertility rates, by race of child: United States, specified years 1940–55 and each year 1960–83 .....	13	16. Number and percent of births of low birth weight and number and ratio of births to unmarried women, by race of child: United States and each State, 1983 .....	30
2. Live births by age of mother, live-birth order, and race of child: United States, 1983 .....	14	17. Numbers, rates, and ratios of births to unmarried women, by age of mother and race of child: United States, 1983 ...	31
3. Birth rates by age of mother, live-birth order, and race of child: United States, 1983 .....	16	18. Birth rates for unmarried women by age of mother and race of child: United States, 1970–83 .....	32
4. Total fertility rates and birth rates by age of mother and race of child: United States, 1970–83 .....	17	19. Live births by interval since last live birth, live-birth order, and race of child: Total of 49 reporting States and the District of Columbia, 1983 .....	34
5. Birth rates by live-birth order and race of child: United States, 1970 and 1975–83 .....	19	20. Live births by educational attainment of mother and father and race of child: Total of 47 reporting States and the District of Columbia, 1983 .....	35
6. Live births by race of child, birth rates, and fertility rates: United States, each division and State, 1983 .....	20	21. Live births by educational attainment of mother, age of mother, and race of child: Total of 47 reporting States and the District of Columbia, 1983 .....	36
7. Live births by sex and sex ratio, by race of child: United States, 1970–83 .....	21	22. Live births by age of mother and specified race of child: United States, 1983 .....	37
8. Live births by race of child and observed and seasonally adjusted birth and fertility rates, by month: United States, 1983 .....	22	23. Live births by birth weight and number and percent low birth weight, by specified race of child: United States, 1983 .....	37
9. Average number of live births and index of occurrence, by day of week: United States, 1983 .....	22	24. Live births by month of pregnancy prenatal care began, age of mother, and race of child: United States, 1983 .....	38
10. Live births by attendant, place of delivery, and race of child: United States, 1983 .....	23	25. Live births by month of pregnancy prenatal care began, number of prenatal visits, and race of child: Total of 49 reporting States and the District of Columbia, 1983 .....	39
11. Live births by place of delivery, attendant, and race of child: United States, 1975–83 .....	24	26. Live births by period of gestation, birth weight, and race of child: Total of 49 reporting States and the District of Columbia, 1983 .....	40
12. Percent distribution of live births by place of delivery and attendant, according to race of child: United States, 1975–83 .....	25	27. Live births by 1- and 5-minute Apgar scores and race of child: Total of 46 reporting States and the District of Columbia, 1983 .....	41
13. Live births by age of father, age of mother, and race of child: United States, 1983 .....	26	28. Live births by 5-minute Apgar score, age of mother, and race of child: Total of 46 reporting States and the District of Columbia, 1983 .....	42
14. Birth rates by age of father and race of child: United States, 1970 and 1975–83 .....	27		
15. Number and percent low birth weight and live births by birth weight, by age of mother and race of child: United States, 1983 .....	28		

**Table 1. Live births, birth rates, and fertility rates, by race of child: United States, specified years 1940–55 and each year 1960–83**

[Birth rates are live births per 1,000 population in specified group. Fertility rates per 1,000 women aged 15–44 years in specified group. Population enumerated as of April 1 for census years and estimated as of July 1 for all other years. Beginning with 1970, excludes births to nonresidents of the United States]

Year	Number				Birth rate				Fertility rate			
	All races	White	All other		All races	White	All other		All races	White	All other	
			Total	Black			Total	Black			Total	Black
<b>Registered births</b>												
1983 <sup>1</sup>	3,638,933	2,904,250	734,683	586,027	15.5	14.6	21.3	20.9	65.8	62.4	83.2	81.7
1982 <sup>1</sup>	3,680,537	2,942,054	738,483	592,641	15.9	14.9	21.9	21.4	67.3	63.9	85.5	84.1
1981 <sup>1</sup>	3,629,238	2,908,669	720,569	587,797	15.8	14.8	22.0	21.6	67.4	63.9	86.4	85.4
1980 <sup>1</sup>	3,612,258	2,898,732	713,526	589,616	15.9	14.9	22.5	22.1	68.4	64.7	88.6	88.1
1979 <sup>1</sup>	3,494,398	2,808,420	685,978	577,855	15.6	14.5	22.2	22.0	67.2	63.4	88.5	88.3
1978 <sup>1</sup>	3,333,279	2,681,116	652,163	551,540	15.0	14.0	21.6	21.3	65.5	61.7	87.0	86.7
1977 <sup>1</sup>	3,326,632	2,691,070	635,562	544,221	15.1	14.1	21.6	21.4	66.8	63.2	87.7	88.1
1976 <sup>1</sup>	3,167,788	2,567,614	600,174	514,479	14.6	13.6	20.8	20.5	65.0	61.5	85.8	85.8
1975 <sup>1</sup>	3,144,198	2,551,996	592,202	511,581	14.6	13.6	21.0	20.7	66.0	62.5	87.7	87.9
1974 <sup>1</sup>	3,159,958	2,575,792	584,166	507,162	14.8	13.9	21.2	20.8	67.8	64.2	89.8	89.7
1973 <sup>1</sup>	3,136,965	2,551,030	585,935	512,597	14.8	13.8	21.7	21.4	68.8	64.9	93.4	93.6
1972 <sup>1</sup>	3,258,411	2,655,558	602,853	531,329	15.6	14.5	22.8	22.5	73.1	68.9	99.5	99.9
1971 <sup>2</sup>	3,555,970	2,919,746	636,224	564,960	17.2	16.1	24.6	24.4	81.6	77.3	109.1	109.7
1970 <sup>2</sup>	3,731,386	3,091,264	640,122	572,362	18.4	17.4	25.1	25.3	87.9	84.1	113.0	115.4
1969 <sup>2</sup>	3,600,206	2,993,614	606,592	543,132	17.9	16.9	24.5	24.4	86.1	82.2	111.6	112.1
1968 <sup>2</sup>	3,501,564	2,912,224	589,340	531,152	17.6	16.6	24.2	24.2	85.2	81.3	111.9	112.7
1967 <sup>3</sup>	3,520,959	2,922,502	598,457	543,976	17.8	16.8	25.0	25.1	87.2	82.8	117.1	118.5
1966 <sup>2</sup>	3,606,274	2,993,230	613,044	558,244	18.4	17.4	26.1	26.2	90.8	86.2	123.5	124.7
1965 <sup>2</sup>	3,760,358	3,123,860	636,498	581,126	19.4	18.3	27.6	27.7	96.3	91.3	131.9	133.2
1964 <sup>2</sup>	4,027,490	3,369,160	658,330	607,556	21.1	20.0	29.2	29.5	104.7	99.8	140.0	142.6
1963 <sup>2,4</sup>	4,098,020	3,326,344	638,928	580,658	21.7	20.7	29.7	---	108.3	103.6	143.7	---
1962 <sup>2,4</sup>	4,167,362	3,394,068	641,580	584,610	22.4	21.4	30.5	---	112.0	107.5	147.8	---
1961 <sup>2</sup>	4,268,326	3,600,864	667,462	611,072	23.3	22.2	31.6	---	117.1	112.3	153.0	---
1960 <sup>2</sup>	4,257,850	3,600,744	657,106	602,264	23.7	22.7	32.1	31.9	118.0	113.2	153.6	153.5
<b>Births adjusted for underregistration</b>												
1955	4,097,000	3,485,000	613,000	---	25.0	23.8	34.5	---	118.3	113.7	154.3	---
1950	3,632,000	3,108,000	524,000	---	24.1	23.0	33.3	---	106.2	102.3	137.3	---
1945	2,858,000	2,471,000	388,000	---	20.4	19.7	26.5	---	85.9	83.4	106.0	---
1940	2,559,000	2,199,000	360,000	---	19.4	18.6	26.7	---	79.9	77.1	102.4	---

<sup>1</sup>Based on 100 percent of births in selected States and on a 50-percent sample of births in all other States; see Technical notes.

<sup>2</sup>Based on a 50-percent sample of births.

<sup>3</sup>Based on a 20- to 50-percent sample of births.

<sup>4</sup>Figures by race exclude data for New Jersey.

**Table 2. Live births by age of mother, live-birth order, and race of child: United States, 1983**

[Based on 100 percent of births in 46 States and on a 50-percent sample of births in 4 States and the District of Columbia; see Technical notes. Live-birth order refers to number of children born alive to mother]

Live-birth order and race of child	All ages	Age of mother												
		Under 15 years	15-19 years						20-24 years	25-29 years	30-34 years	35-39 years	40-44 years	45-49 years
			Total	15 years	16 years	17 years	18 years	19 years						
<b>All races</b>														
Total	3,638,933	9,752	489,286	24,686	55,000	92,987	136,921	179,692	1,160,274	1,147,720	624,516	180,353	25,882	1,150
First child	1,530,639	9,336	377,467	23,096	49,180	77,331	103,889	123,971	564,327	398,531	147,809	30,134	2,954	81
Second child	1,185,963	262	90,718	1,340	4,976	13,335	27,188	43,879	403,632	424,016	216,853	46,498	3,896	88
Third child	553,910	24	15,317	43	361	1,484	4,286	9,143	139,218	208,743	143,990	42,181	4,328	109
Fourth child	205,985	4	2,081	-	19	131	502	1,429	35,914	73,711	63,706	26,393	4,055	121
Fifth child	77,668	-	263	-	2	13	54	194	8,599	24,342	26,612	14,451	3,241	160
Sixth child	33,222	-	27	-	-	1	-	26	2,056	8,451	11,925	8,364	2,287	112
Seventh child	15,441	-	5	-	-	-	-	5	451	2,869	5,668	4,811	1,545	92
Eighth child and over	16,976	-	26	-	-	-	7	19	222	1,487	4,821	6,591	3,449	380
Not stated	19,129	126	3,382	207	462	692	995	1,026	5,855	5,570	3,132	930	127	7
<b>White</b>														
Total	2,904,250	4,031	338,152	13,368	33,811	62,462	96,464	132,047	917,533	956,098	520,547	146,973	20,114	802
First child	1,240,657	3,882	269,075	12,726	31,119	53,884	76,207	95,139	467,051	345,278	127,485	25,438	2,388	60
Second child	967,632	102	58,149	557	2,321	7,510	17,337	30,424	320,923	361,513	185,123	38,653	3,104	65
Third child	432,995	7	7,890	14	129	608	2,060	5,079	98,537	168,032	120,168	34,841	3,441	79
Fourth child	151,053	4	851	-	1	50	187	613	21,122	53,802	50,497	21,420	3,262	95
Fifth child	53,559	-	86	-	-	6	14	66	4,171	15,635	19,686	11,342	2,527	112
Sixth child	22,102	-	8	-	-	-	-	8	860	4,857	8,255	6,347	1,693	82
Seventh child	10,185	-	-	-	-	-	-	-	193	1,497	3,747	3,545	1,141	62
Eighth child and over	11,089	-	14	-	-	-	5	9	124	727	2,921	4,599	2,460	244
Not stated	14,978	36	2,079	71	241	404	654	709	4,552	4,757	2,665	788	98	3
<b>All other</b>														
Total	734,683	5,721	151,134	11,318	21,189	30,525	40,457	47,645	242,741	191,622	103,969	33,380	5,768	348
First child	289,982	5,454	108,392	10,370	18,061	23,447	27,682	28,832	97,276	53,253	20,324	4,696	566	21
Second child	218,331	160	32,569	783	2,655	5,825	9,851	13,455	82,709	62,503	31,730	7,845	792	23
Third child	120,915	17	7,427	29	232	876	2,226	4,064	40,681	40,711	23,822	7,340	887	30
Fourth child	54,932	-	1,230	-	18	81	315	816	14,792	19,909	13,209	4,973	793	26
Fifth child	24,109	-	177	-	2	7	40	128	4,428	8,707	6,926	3,109	714	48
Sixth child	11,120	-	19	-	-	1	-	18	1,196	3,594	3,670	2,017	594	30
Seventh child	5,256	-	5	-	-	-	-	5	258	1,372	1,921	1,266	404	30
Eighth child and over	5,887	-	12	-	-	-	2	10	98	760	1,900	1,992	989	136
Not stated	4,151	90	1,303	136	221	288	341	317	1,303	813	467	142	29	4

Black

Total.....	586,027	5,439	136,666	10,678	19,642	27,840	36,443	42,063	203,062	143,584	70,682	22,390	4,006	198
First child.....	230,294	5,184	97,543	9,772	16,697	21,222	24,729	25,123	78,877	34,434	11,271	2,650	323	12
Second child.....	171,638	150	29,683	746	2,497	5,439	8,981	12,020	69,494	47,133	19,974	4,683	506	15
Third child.....	97,909	17	6,876	29	224	825	2,087	3,711	35,203	32,987	17,429	4,813	564	20
Fourth child.....	45,221	-	1,145	-	18	76	289	762	13,002	16,396	10,372	3,706	582	18
Fifth child.....	19,750	-	167	-	2	7	35	123	3,933	7,184	5,511	2,423	507	25
Sixth child.....	8,944	-	18	-	-	1	-	17	1,103	2,992	2,798	1,561	460	12
Seventh child.....	4,179	-	3	-	-	-	-	3	243	1,168	1,469	956	320	20
Eighth child and over.....	4,619	-	12	-	-	-	2	10	90	681	1,535	1,502	725	74
Not stated.....	3,473	88	1,219	131	204	270	320	294	1,117	609	323	96	19	2

**Table 3. Birth rates by age of mother, live-birth order, and race of child: United States, 1983**

[Based on 100 percent of births in 46 States and on a 50-percent sample of births in 4 States and the District of Columbia; see Technical notes. Rates are live births per 1,000 women in specified age and racial group. Live-birth order refers to number of children born alive to mother]

Live-birth order and race of child	Age of mother										
	15-44 years <sup>1</sup>	10-14 years	15-19 years			20-24 years	25-29 years	30-34 years	35-39 years	40-44 years	45-49 years
			Total	15-17 years	18-19 years						
All races . . . . .	65.8	1.1	51.7	32.0	78.1	108.3	108.7	64.6	22.1	3.8	0.2
First child . . . . .	27.8	1.1	40.2	27.9	56.5	52.9	37.9	15.4	3.7	0.4	0.0
Second child . . . . .	21.5	0.0	9.7	3.7	17.6	37.9	40.4	22.6	5.7	0.6	0.0
Third child . . . . .	10.1	0.0	1.6	0.4	3.3	13.1	19.9	15.0	5.2	0.6	0.0
Fourth child . . . . .	3.7	0.0	0.2	0.0	0.5	3.4	7.0	6.6	3.2	0.6	0.0
Fifth child . . . . .	1.4	-	0.0	0.0	0.1	0.8	2.3	2.8	1.8	0.5	0.0
Sixth and seventh child . . . . .	0.9	-	0.0	0.0	0.0	0.2	1.1	1.8	1.6	0.6	0.0
Eighth child and over . . . . .	0.3	-	0.0	-	0.0	0.0	0.1	0.5	0.8	0.5	0.1
White . . . . .	62.4	0.6	43.6	24.8	68.3	102.6	108.0	64.0	21.0	3.5	0.2
First child . . . . .	26.8	0.5	34.9	22.3	51.5	52.5	39.2	15.7	3.7	0.4	0.0
Second child . . . . .	20.9	0.0	7.5	2.4	14.4	36.1	41.1	22.9	5.5	0.5	0.0
Third child . . . . .	9.4	0.0	1.0	0.2	2.1	11.1	19.1	14.8	5.0	0.6	0.0
Fourth child . . . . .	3.3	0.0	0.1	0.0	0.2	2.4	6.1	6.2	3.1	0.6	0.0
Fifth child . . . . .	1.2	-	0.0	0.0	0.0	0.5	1.8	2.4	1.6	0.4	0.0
Sixth and seventh child . . . . .	0.7	-	0.0	-	0.0	0.1	0.7	1.5	1.4	0.5	0.0
Eighth child and over . . . . .	0.2	-	0.0	-	0.0	0.0	0.1	0.4	0.7	0.4	0.0
All other . . . . .	83.2	3.5	89.3	64.2	123.9	136.8	112.1	68.4	28.6	5.9	0.4
First child . . . . .	33.0	3.4	64.6	53.4	80.1	55.1	31.3	13.4	4.0	0.6	0.0
Second child . . . . .	24.8	0.1	19.4	9.5	33.0	46.8	36.7	21.0	6.8	0.8	0.0
Third child . . . . .	13.8	0.0	4.4	1.2	8.9	23.0	23.9	15.7	6.3	0.9	0.0
Fourth child . . . . .	6.2	-	0.7	0.1	1.6	8.4	11.7	8.7	4.3	0.8	0.0
Fifth child . . . . .	2.7	-	0.1	0.0	0.2	2.5	5.1	4.6	2.7	0.7	0.1
Sixth and seventh child . . . . .	1.9	-	0.0	0.0	0.0	0.8	2.9	3.7	2.8	1.0	0.1
Eighth child and over . . . . .	0.7	-	0.0	-	0.0	0.1	0.4	1.3	1.7	1.0	0.2
Black . . . . .	81.7	4.1	95.5	70.1	130.4	137.7	103.4	59.2	24.7	5.2	0.3
First child . . . . .	32.3	3.9	68.8	58.1	83.5	53.8	24.9	9.5	2.9	0.4	0.0
Second child . . . . .	24.1	0.1	20.9	10.6	35.2	47.4	34.1	16.8	5.2	0.7	0.0
Third child . . . . .	13.7	0.0	4.8	1.3	9.7	24.0	23.8	14.7	5.3	0.7	0.0
Fourth child . . . . .	6.3	-	0.8	0.1	1.8	8.9	11.9	8.7	4.1	0.8	0.0
Fifth child . . . . .	2.8	-	0.1	0.0	0.3	2.7	5.2	4.6	2.7	0.7	0.0
Sixth and seventh child . . . . .	1.8	-	0.0	0.0	0.0	0.9	3.0	3.6	2.8	1.0	0.0
Eighth child and over . . . . .	0.6	-	0.0	-	0.0	0.1	0.5	1.3	1.7	0.9	0.1

<sup>1</sup>Rates computed by relating total births, regardless of age of mother, to women aged 15-44 years.



**Table 4. Total fertility rates and birth rates by age of mother and race of child: United States, 1970-83**

[Total fertility rates are sums of birth rates for 5-year age groups multiplied by 5. Birth rates are live births per 1,000 women in specified group, enumerated as of April 1 for 1970 and 1980 and estimated as of July 1 for all other years]

Year and race of child	Total fertility rate	Age of mother									
		10-14 years	15-19 years			20-24 years	25-29 years	30-34 years	35-39 years	40-44 years	45-49 years
			Total	15-17 years	18-19 years						
<b>All races</b>											
1983 <sup>1</sup>	1,802.5	1.1	51.7	32.0	78.1	108.3	108.7	64.6	22.1	3.8	0.2
1982 <sup>1</sup>	1,828.5	1.1	52.9	32.4	80.7	111.3	111.0	64.2	21.1	3.9	0.2
1981 <sup>1</sup>	1,815.0	1.1	52.7	32.1	81.7	111.8	112.0	61.4	20.0	3.8	0.2
1980 <sup>1</sup>	1,839.5	1.1	53.0	32.5	82.1	115.1	112.9	61.9	19.8	3.9	0.2
1979 <sup>1</sup>	1,808.0	1.2	52.3	32.3	81.3	112.8	111.4	60.3	19.5	3.9	0.2
1978 <sup>1</sup>	1,760.0	1.2	51.5	32.2	79.8	109.9	108.5	57.8	19.0	3.9	0.2
1977 <sup>1</sup>	1,789.5	1.2	52.8	33.9	80.9	112.9	111.0	56.4	19.2	4.2	0.2
1976 <sup>1</sup>	1,738.0	1.2	52.8	34.1	80.5	110.3	106.2	53.6	19.0	4.3	0.2
1975 <sup>1</sup>	1,774.0	1.3	55.6	36.1	85.0	113.0	108.2	52.3	19.5	4.6	0.3
1974 <sup>1</sup>	1,835.0	1.2	57.5	37.3	88.7	117.7	111.5	53.8	20.2	4.8	0.3
1973 <sup>1</sup>	1,879.0	1.2	59.3	38.5	91.2	119.7	112.2	55.6	22.1	5.4	0.3
1972 <sup>1</sup>	2,010.0	1.2	61.7	39.0	96.9	130.2	117.7	59.8	24.8	6.2	0.4
1971 <sup>2</sup>	2,266.5	1.1	64.5	38.2	105.3	150.1	134.1	67.3	28.7	7.1	0.4
1970 <sup>2</sup>	2,480.0	1.2	68.3	38.8	114.7	167.8	145.1	73.3	31.7	8.1	0.5
<b>White</b>											
1983 <sup>1</sup>	1,717.5	0.6	43.6	24.8	68.3	102.6	108.0	64.0	21.0	3.5	0.2
1982 <sup>1</sup>	1,742.0	0.6	44.6	25.2	70.8	105.9	110.3	63.3	20.0	3.5	0.2
1981 <sup>1</sup>	1,726.0	0.5	44.6	25.1	71.9	106.3	111.3	60.2	18.7	3.4	0.2
1980 <sup>1</sup>	1,748.5	0.6	44.7	25.2	72.1	109.5	112.4	60.4	18.5	3.4	0.2
1979 <sup>1</sup>	1,715.5	0.6	43.7	24.7	71.0	107.0	110.8	59.0	18.3	3.5	0.2
1978 <sup>1</sup>	1,667.5	0.6	42.9	24.9	69.4	104.1	107.9	56.6	17.7	3.5	0.2
1977 <sup>1</sup>	1,703.0	0.6	44.1	26.1	70.5	107.7	110.9	55.3	18.0	3.8	0.2
1976 <sup>1</sup>	1,652.0	0.6	44.1	26.3	70.2	105.3	105.9	52.6	17.8	3.9	0.2
1975 <sup>1</sup>	1,686.0	0.6	46.4	28.0	74.0	108.2	108.1	51.3	18.2	4.2	0.2
1974 <sup>1</sup>	1,748.5	0.6	47.9	28.7	77.3	113.0	111.8	52.9	18.9	4.4	0.2
1973 <sup>1</sup>	1,783.0	0.6	49.0	29.2	79.3	114.4	112.3	54.4	20.7	4.9	0.3
1972 <sup>1</sup>	1,906.5	0.5	51.0	29.3	84.3	124.8	117.4	58.4	23.3	5.6	0.3
1971 <sup>2</sup>	2,160.5	0.5	53.6	28.5	92.3	144.9	134.0	65.4	26.9	6.4	0.4
1970 <sup>2</sup>	2,385.0	0.5	57.4	29.2	101.5	163.4	145.9	71.9	30.0	7.5	0.4
<b>All other</b>											
1983 <sup>1</sup>	2,225.0	3.5	89.3	64.2	123.9	136.8	112.1	68.4	28.6	5.9	0.4
1982 <sup>1</sup>	2,265.0	3.6	91.5	65.6	128.2	139.3	114.9	69.0	28.0	6.2	0.5
1981 <sup>1</sup>	2,274.5	3.6	91.8	65.2	130.8	140.8	115.9	68.5	27.6	6.3	0.4
1980 <sup>1</sup>	2,323.0	3.9	94.6	68.3	133.2	145.0	115.5	70.8	27.9	6.5	0.4
1979 <sup>1</sup>	2,309.5	4.1	96.5	70.5	134.9	144.3	114.6	68.3	27.3	6.4	0.4
1978 <sup>1</sup>	2,264.5	4.0	96.0	70.4	134.4	142.1	111.9	65.2	26.9	6.4	0.4
1977 <sup>1</sup>	2,278.5	4.3	99.5	74.8	136.8	142.3	111.5	63.4	27.3	6.9	0.5
1976 <sup>1</sup>	2,222.5	4.3	99.9	75.5	137.2	138.9	107.6	59.5	26.9	6.9	0.5
1975 <sup>1</sup>	2,276.0	4.7	106.4	80.5	146.1	141.0	108.7	58.8	27.6	7.5	0.5
1974 <sup>1</sup>	2,338.5	4.6	111.3	84.9	153.1	145.5	109.5	59.9	28.8	7.6	0.5
1973 <sup>1</sup>	2,443.0	5.0	117.5	90.5	160.9	151.6	111.2	63.2	30.9	8.6	0.6
1972 <sup>1</sup>	2,627.5	4.7	123.8	93.8	173.3	163.4	119.3	68.9	34.8	9.9	0.7
1971 <sup>2</sup>	2,919.5	4.7	128.5	94.0	185.6	184.0	134.6	79.3	40.2	11.7	0.9
1970 <sup>2</sup>	3,066.7	4.8	133.4	95.2	195.4	196.8	140.1	82.5	42.2	12.6	0.9

See footnotes at end of table.

Table 4. Total fertility rates and birth rates by age of mother and race of child: United States, 1970-83—Con.

[Total fertility rates are sums of birth rates for 5-year age groups multiplied by 5. Birth rates are live births per 1,000 women in specified group, enumerated as of April 1 for 1970 and 1980 and estimated as of July 1 for all other years]

Year and race of child	Total fertility rate	Age of mother									
		10-14 years	15-19 years			20-24 years	25-29 years	30-34 years	35-39 years	40-44 years	45-49 years
			Total	15-17 years	18-19 years						
Black											
1983 <sup>1</sup> .....	2,150.5	4.1	95.5	70.1	130.4	137.7	103.4	59.2	24.7	5.2	0.3
1982 <sup>1</sup> .....	2,188.5	4.1	97.0	71.2	133.3	139.1	106.9	60.4	24.4	5.4	0.4
1981 <sup>1</sup> .....	2,206.0	4.1	97.1	70.6	135.9	141.2	108.3	60.4	24.2	5.6	0.3
1980 <sup>1</sup> .....	2,266.0	4.3	100.0	73.6	138.8	146.3	109.1	62.9	24.5	5.8	0.3
1979 <sup>1</sup> .....	2,263.2	4.6	101.7	75.7	140.4	146.3	108.2	60.7	24.7	6.1	0.4
1978 <sup>1</sup> .....	2,218.0	4.4	100.9	75.0	139.7	143.8	105.4	58.3	24.3	6.1	0.4
1977 <sup>1</sup> .....	2,251.0	4.7	104.7	79.6	142.9	144.4	106.4	57.5	25.4	6.6	0.5
1976 <sup>1</sup> .....	2,187.0	4.7	104.9	80.3	142.5	140.5	101.6	53.6	24.8	6.8	0.5
1975 <sup>1</sup> .....	2,243.0	5.1	111.8	85.6	152.4	142.8	102.2	53.1	25.6	7.5	0.5
1974 <sup>1</sup> .....	2,298.5	5.0	116.5	90.0	158.7	146.7	102.2	54.1	27.0	7.6	0.6
1973 <sup>1</sup> .....	2,411.0	5.4	123.1	96.0	166.6	153.1	103.9	58.1	29.4	8.6	0.6
1972 <sup>1</sup> .....	2,601.0	5.1	129.8	99.5	179.5	165.0	112.4	64.0	33.4	9.8	0.7
1971 <sup>2</sup> .....	2,902.0	5.1	134.5	99.4	192.6	186.6	128.0	74.8	38.9	11.6	0.9
1970 <sup>2</sup> .....	3,098.7	5.2	147.7	101.4	204.9	202.7	136.3	79.6	41.9	12.5	1.0

<sup>1</sup>Based on 100 percent of births in selected States and on a 50-percent sample of births in all other States; see Technical notes.

<sup>2</sup>Based on a 50-percent sample of births.

**Table 5. Birth rates by live-birth order and race of child: United States, 1970 and 1975-83**

[Rates are live births per 1,000 women aged 15-44 years, enumerated as of April 1 for 1970 and 1980 and estimated as of July 1 for all other years. Figures for live-birth order not stated are distributed]

Year and race of child	Total	Live-birth order						
		1	2	3	4	5	6 and 7	8 and over
<b>All races</b>								
1983 <sup>1</sup>	65.8	27.8	21.5	10.1	3.7	1.4	0.9	0.3
1982 <sup>1</sup>	67.3	28.6	22.0	10.2	3.8	1.4	0.9	0.3
1981 <sup>1</sup>	67.4	29.0	21.6	10.2	3.8	1.5	0.9	0.4
1980 <sup>1</sup>	68.4	29.5	21.8	10.3	3.9	1.5	1.0	0.4
1979 <sup>1</sup>	67.2	28.6	21.6	10.1	3.8	1.5	1.0	0.4
1978 <sup>1</sup>	65.5	27.8	21.1	9.8	3.8	1.5	1.0	0.4
1977 <sup>1</sup>	66.8	28.2	21.6	10.0	3.8	1.6	1.1	0.5
1976 <sup>1</sup>	65.0	27.5	20.8	9.5	3.8	1.6	1.2	0.6
1975 <sup>1</sup>	66.0	28.1	20.9	9.4	3.9	1.7	1.3	0.7
1970 <sup>2</sup>	87.9	34.2	24.2	13.6	7.2	3.8	3.2	1.8
<b>White</b>								
1983 <sup>1</sup>	62.4	26.8	20.9	9.4	3.3	1.2	0.7	0.2
1982 <sup>1</sup>	63.9	27.7	21.3	9.5	3.3	1.2	0.7	0.3
1981 <sup>1</sup>	63.9	28.1	20.9	9.4	3.3	1.2	0.8	0.3
1980 <sup>1</sup>	64.7	28.4	21.0	9.5	3.4	1.3	0.8	0.3
1979 <sup>1</sup>	63.4	27.4	20.8	9.4	3.4	1.3	0.8	0.3
1978 <sup>1</sup>	61.7	26.6	20.2	9.2	3.3	1.3	0.8	0.3
1977 <sup>1</sup>	63.2	26.9	20.9	9.4	3.4	1.4	0.9	0.4
1976 <sup>1</sup>	61.5	26.3	20.2	8.9	3.4	1.4	1.0	0.4
1975 <sup>1</sup>	62.5	26.7	20.3	8.8	3.5	1.5	1.1	0.5
1970 <sup>2</sup>	84.1	32.9	23.7	13.3	6.8	3.4	2.7	1.2
<b>All other</b>								
1983 <sup>1</sup>	83.2	33.0	24.8	13.8	6.2	2.7	1.9	0.7
1982 <sup>1</sup>	85.5	33.8	25.6	14.2	6.4	2.8	1.9	0.7
1981 <sup>1</sup>	86.4	34.3	25.9	14.2	6.4	2.8	2.0	0.8
1980 <sup>1</sup>	88.6	35.6	26.2	14.4	6.5	2.9	2.1	0.9
1979 <sup>1</sup>	88.5	35.7	26.2	14.2	6.4	2.9	2.1	1.0
1978 <sup>1</sup>	87.0	35.0	25.8	13.8	6.3	2.9	2.2	1.1
1977 <sup>1</sup>	87.7	35.6	25.7	13.5	6.2	3.0	2.4	1.3
1976 <sup>1</sup>	85.8	35.2	24.7	12.8	6.0	3.0	2.5	1.5
1975 <sup>1</sup>	87.7	36.7	24.6	12.6	6.1	3.1	2.8	1.8
1970 <sup>2</sup>	113.0	42.4	26.9	15.9	9.7	6.1	6.7	5.3
<b>Black</b>								
1983 <sup>1</sup>	81.7	32.3	24.1	13.7	6.3	2.8	1.8	0.6
1982 <sup>1</sup>	84.1	33.0	24.9	14.2	6.5	2.8	1.9	0.7
1981 <sup>1</sup>	85.4	33.8	25.2	14.3	6.6	2.9	2.0	0.8
1980 <sup>1</sup>	88.1	35.2	25.7	14.5	6.7	3.0	2.1	0.9
1979 <sup>1</sup>	88.3	35.3	25.8	14.4	6.6	3.0	2.2	1.0
1978 <sup>1</sup>	86.7	34.6	25.4	13.9	6.5	3.0	2.3	1.1
1977 <sup>1</sup>	88.1	35.6	25.5	13.6	6.4	3.1	2.4	1.4
1976 <sup>1</sup>	85.8	35.2	24.4	12.9	6.2	3.1	2.6	1.5
1975 <sup>1</sup>	87.9	36.9	24.2	12.6	6.3	3.2	2.9	1.9
1970 <sup>2</sup>	115.4	43.3	27.1	16.1	10.0	6.4	7.0	5.6

<sup>1</sup>Based on 100 percent of births in selected States and on a 50-percent sample of births in all other States; see Technical notes.

<sup>2</sup>Based on a 50-percent sample of births.

Table 6. Live births by race of child, birth rates, and fertility rates: United States, each division and State, 1983

[By place of residence. Based on 100 percent of births in 46 States and on a 50-percent sample of births in 4 States and the District of Columbia; see Technical notes. Birth rates per 1,000 estimated population in each area; fertility rates per 1,000 women aged 15-44 years estimated in each area]

Division and State	Number			Birth rate	Fertility rate
	All races <sup>1</sup>	White	Black		
United States.....	3,638,933	2,904,250	586,027	15.5	65.8
New England.....	168,192	153,236	11,486	13.5	55.9
Maine.....	16,666	16,343	97	14.6	63.4
New Hampshire.....	13,799	13,558	95	14.4	59.0
Vermont.....	7,954	7,888	23	15.2	61.7
Massachusetts.....	76,081	68,842	5,372	13.2	54.0
Rhode Island.....	12,595	11,254	854	13.2	56.0
Connecticut.....	41,097	35,351	5,045	13.1	55.0
Middle Atlantic.....	506,012	400,031	93,774	13.7	58.3
New York.....	248,617	187,666	53,382	14.1	59.0
New Jersey.....	99,194	76,841	19,790	13.3	56.5
Pennsylvania.....	158,201	135,524	20,602	13.3	58.5
East North Central.....	624,144	517,820	96,063	15.0	63.6
Ohio.....	158,769	134,745	22,353	14.8	62.9
Indiana.....	80,814	71,316	8,829	14.8	62.6
Illinois.....	178,885	136,972	37,965	15.6	66.0
Michigan.....	133,118	109,039	21,923	14.7	61.0
Wisconsin.....	72,558	65,748	4,993	15.3	65.4
West North Central.....	275,961	247,847	19,198	15.8	69.2
Minnesota.....	65,563	61,161	1,642	15.8	66.5
Iowa.....	43,262	41,592	1,011	14.9	66.5
Missouri.....	75,599	63,045	11,646	15.2	66.4
North Dakota.....	12,380	11,311	135	18.2	82.0
South Dakota.....	12,526	10,549	100	17.9	83.0
Nebraska.....	26,232	24,256	1,326	16.4	72.7
Kansas.....	40,399	35,933	3,338	16.7	74.0
South Atlantic.....	562,870	390,821	162,279	14.5	61.2
Delaware.....	9,230	6,849	2,308	15.2	61.5
Maryland.....	63,944	42,834	19,283	14.9	58.8
District of Columbia.....	9,333	1,719	7,479	15.0	55.6
Virginia.....	80,732	59,363	19,316	14.5	58.5
West Virginia.....	25,882	24,737	1,016	13.2	59.0
North Carolina.....	83,884	57,472	24,103	13.8	57.5
South Carolina.....	50,755	30,444	19,850	15.6	64.3
Georgia.....	90,032	57,508	31,475	15.7	63.5
Florida.....	149,078	109,895	37,449	13.9	64.7
East South Central.....	223,243	160,957	60,484	15.0	64.0
Kentucky.....	54,701	49,371	4,875	14.7	63.2
Tennessee.....	65,481	50,487	14,443	14.0	59.1
Alabama.....	59,061	38,432	20,275	14.9	63.8
Mississippi.....	44,000	22,667	20,891	17.0	74.5
West South Central.....	469,661	370,575	84,838	18.2	76.8
Arkansas.....	34,996	26,120	8,451	15.1	67.7
Louisiana.....	82,514	50,161	30,954	18.6	77.3
Oklahoma.....	56,902	45,234	5,426	17.2	75.6
Texas.....	295,249	249,060	40,007	18.7	78.1
Mountain.....	232,929	207,704	7,770	18.9	79.5
Montana.....	14,063	12,446	71	17.3	75.2
Idaho.....	18,748	18,129	93	19.0	84.5
Wyoming.....	10,268	9,762	109	19.9	85.6
Colorado.....	54,662	50,186	2,702	17.4	68.2
New Mexico.....	27,617	22,954	717	19.7	83.2
Arizona.....	53,785	44,927	2,321	18.1	78.9
Utah.....	39,474	37,496	301	24.4	107.0
Nevada.....	14,312	11,804	1,456	16.0	66.0
Pacific.....	575,921	455,259	50,135	17.1	70.9
Washington.....	68,680	60,509	3,032	16.0	66.6
Oregon.....	39,977	37,094	982	15.0	63.9
California.....	436,143	344,384	44,796	17.3	71.5
Alaska.....	11,998	8,426	525	24.9	96.8
Hawaii.....	19,123	4,846	800	18.8	79.0

<sup>1</sup>Includes races other than white and black.

Table 7. Live births by sex and sex ratio, by race of child: United States, 1970-83

Year	All races			White			All other					
			Males per 1,000 females			Males per 1,000 females	Total			Black		
	Male	Female		Male	Female		Male	Female	Males per 1,000 females	Male	Female	Males per 1,000 females
1983 <sup>1</sup>	1,865,553	1,773,380	1,052	1,492,385	1,411,865	1,057	373,168	361,515	1,032	297,011	289,016	1,028
1982 <sup>1</sup>	1,885,676	1,794,861	1,051	1,509,704	1,432,350	1,054	375,972	362,511	1,037	301,121	291,520	1,033
1981 <sup>1</sup>	1,860,272	1,768,966	1,052	1,494,437	1,414,232	1,057	365,835	354,734	1,031	297,864	289,933	1,027
1980 <sup>1</sup>	1,852,616	1,759,642	1,053	1,490,140	1,408,592	1,058	362,476	351,050	1,033	299,033	290,583	1,029
1979 <sup>1</sup>	1,791,267	1,703,131	1,052	1,442,981	1,365,439	1,057	348,286	337,692	1,031	293,013	284,842	1,029
1978 <sup>1</sup>	1,709,394	1,623,885	1,053	1,378,222	1,302,894	1,058	331,172	320,991	1,032	279,598	271,942	1,028
1977 <sup>1</sup>	1,705,916	1,620,716	1,053	1,383,440	1,307,630	1,058	322,476	313,086	1,030	275,556	268,665	1,026
1976 <sup>1</sup>	1,624,436	1,543,352	1,053	1,319,717	1,247,897	1,058	304,719	295,455	1,031	260,661	253,818	1,027
1975 <sup>1</sup>	1,613,135	1,531,063	1,054	1,312,308	1,239,688	1,059	300,827	291,375	1,032	259,610	251,971	1,030
1974 <sup>1</sup>	1,622,114	1,537,844	1,055	1,325,019	1,250,773	1,059	297,095	287,071	1,035	257,277	249,885	1,030
1973 <sup>1</sup>	1,608,326	1,528,639	1,052	1,311,032	1,239,998	1,057	297,294	288,641	1,030	259,877	252,720	1,028
1972 <sup>1</sup>	1,669,927	1,588,484	1,051	1,364,578	1,290,980	1,057	305,349	297,504	1,026	268,842	262,487	1,024
1971 <sup>2</sup>	1,822,910	1,733,060	1,052	1,499,958	1,419,788	1,056	322,952	313,272	1,031	286,430	278,530	1,028
1970 <sup>2</sup>	1,915,378	1,816,008	1,055	1,590,140	1,501,124	1,059	325,238	314,884	1,033	290,508	281,854	1,031

<sup>1</sup>Based on 100 percent of births in selected States and on a 50-percent sample of births in all other States; see Technical notes.

<sup>2</sup>Based on a 50-percent sample of births.

**Table 8. Live births by race of child and observed and seasonally adjusted birth and fertility rates, by month: United States, 1983**

[Based on 100 percent of births in 46 States and on a 50-percent sample of births in 4 States and the District of Columbia; see Technical notes. Rates on an annual basis per 1,000 population for specified month. Birth rates based on the total population. Fertility rates based on women aged 15-44 years]

Month	Number				Observed		Seasonally adjusted	
	All races	White	All other		Birth rate	Fertility rate	Birth rate	Fertility rate
			Total	Black				
Total .....	3,638,933	2,904,250	734,683	586,027	15.5	65.8	...	...
January .....	297,750	235,253	62,497	50,553	15.0	63.8	15.7	66.8
February .....	276,981	220,837	56,144	44,928	15.5	65.7	15.8	66.9
March .....	310,928	250,031	60,897	48,338	15.7	66.5	16.0	67.7
April .....	293,920	237,675	56,245	44,275	15.3	64.9	15.9	67.5
May .....	303,224	244,274	58,950	46,369	15.3	64.8	15.8	66.8
June .....	303,957	243,769	60,188	47,870	15.8	67.0	15.7	66.6
July .....	317,969	253,059	64,910	52,432	16.0	67.8	15.2	64.5
August .....	323,960	257,561	66,399	53,261	16.3	69.0	15.4	65.2
September .....	314,468	250,060	64,408	51,526	16.3	69.1	15.2	64.5
October .....	305,777	243,455	62,322	49,690	15.3	65.0	15.3	64.8
November .....	290,944	231,393	59,551	47,484	15.1	63.8	15.4	65.2
December .....	299,055	236,883	62,172	49,301	15.0	63.4	15.3	64.7

**Table 9. Average number of live births and index of occurrence, by day of week: United States, 1983**

[Based on 100 percent of births in 46 States and on a 50-percent sample of births in 4 States and the District of Columbia; see Technical notes]

Day of week	Average number of births	Index of occurrence <sup>1</sup>
Total .....	9,970	100.0
Sunday .....	8,532	85.6
Monday .....	10,243	102.7
Tuesday .....	10,730	107.6
Wednesday .....	10,515	105.5
Thursday .....	10,476	105.1
Friday .....	10,514	105.5
Saturday .....	8,799	88.3

<sup>1</sup> Index is the ratio of the average number of births on a given day of the week to the average daily number of births for the year, multiplied by 100.

**Table 10. Live births by attendant, place of delivery, and race of child: United States, 1983**

[Based on 100 percent of births in 46 States and on a 50-percent sample of births in 4 States and the District of Columbia; see Technical notes]

<i>Place of delivery and race of child</i>	<i>All births</i>	<i>Attendant</i>			
		<i>Physician</i>	<i>Midwife</i>	<i>Other</i>	<i>Unspecified</i>
<b>All races<sup>1</sup></b>					
Total .....	3,638,933	3,518,881	87,023	24,194	8,835
In hospital <sup>2</sup> .....	3,599,660	3,508,666	71,617	12,532	6,845
Not in hospital .....	39,042	10,153	15,356	11,574	1,959
Not specified .....	231	62	50	88	31
<b>White</b>					
Total .....	2,904,250	2,815,092	64,042	18,225	6,891
In hospital <sup>2</sup> .....	2,870,488	2,806,960	49,651	8,477	5,400
Not in hospital .....	33,608	8,085	14,355	9,700	1,468
Not specified .....	154	47	36	48	23
<b>Black</b>					
Total .....	586,027	562,906	18,142	3,761	1,218
In hospital <sup>2</sup> .....	582,003	561,304	17,400	2,377	922
Not in hospital .....	3,993	1,595	738	1,370	290
Not specified .....	31	7	4	14	6

<sup>1</sup>Includes races other than white and black.

<sup>2</sup>Includes births occurring en route to or on arrival at hospital.

Table 11. Live births by place of delivery, attendant, and race of child: United States, 1975-83

[Based on 100 percent of births in selected States and on a 50-percent sample of births in all other States; see Technical notes]

Year and race of child	Total	In hospital <sup>1</sup>				Not in hospital <sup>2</sup>			
		Physician	Midwife	Other	Unspecified	Physician	Midwife	Other	Unspecified
All races									
1983	3,638,933	3,508,666	71,617	12,532	6,845	10,215	15,406	11,662	1,990
1982	3,680,537	3,560,644	63,062	11,936	6,554	10,296	14,375	11,855	1,815
1981	3,629,238	3,490,919	55,537	13,303	31,823	10,998	12,754	11,794	2,110
1980	3,612,258	3,499,959	51,576	17,456	7,379	11,992	11,093	11,630	1,173
1979	3,494,398	3,393,773	44,496	11,221	10,994	11,837	10,363	10,032	1,682
1978	3,333,279	3,221,677	36,282	12,721	29,979	11,806	9,778	9,167	1,869
1977	3,326,632	3,203,242	30,635	12,531	47,065	12,766	9,991	7,449	2,953
1976	3,167,788	3,055,287	24,656	12,871	45,282	11,940	9,574	5,914	2,264
1975	3,144,198	3,026,024	19,686	7,122	64,069	11,265	9,727	2,960	3,345
White									
1983	2,904,250	2,806,960	49,651	8,477	5,400	8,132	14,391	9,748	1,491
1982	2,942,054	2,853,427	42,684	8,197	5,116	7,982	13,262	9,982	1,404
1981	2,908,669	2,804,868	37,019	9,405	25,505	8,560	11,577	10,047	1,688
1980	2,898,732	2,815,382	33,730	13,691	5,548	9,495	9,919	10,021	946
1979	2,808,420	2,733,403	29,086	8,380	9,157	9,356	8,879	8,734	1,425
1978	2,681,116	2,598,455	22,319	9,952	23,977	9,136	7,733	8,059	1,485
1977	2,691,070	2,600,011	17,935	9,643	38,056	9,389	7,028	6,605	2,403
1976	2,567,614	2,486,339	13,733	9,642	36,203	8,894	5,824	5,148	1,831
1975	2,551,996	2,465,957	10,076	5,342	52,392	7,818	5,082	2,585	2,744
All other									
1983	734,683	701,706	21,966	4,055	1,445	2,083	1,015	1,914	499
1982	738,483	707,217	20,378	3,739	1,438	2,314	1,113	1,873	411
1981	720,569	686,051	18,518	3,898	6,318	2,438	1,177	1,747	422
1980	713,526	684,577	17,846	3,765	1,831	2,497	1,174	1,609	227
1979	685,978	660,370	15,410	2,841	1,837	2,481	1,484	1,298	257
1978	652,163	623,222	13,963	2,769	6,002	2,670	2,045	1,108	384
1977	635,562	603,231	12,700	2,888	9,009	3,377	2,963	844	550
1976	600,174	568,948	10,923	3,229	9,079	3,046	3,750	766	433
1975	592,202	560,067	9,610	1,780	11,677	3,447	4,645	375	601
Black									
1983	586,027	561,304	17,400	2,377	922	1,602	742	1,384	296
1982	592,641	568,943	16,162	2,147	1,024	1,868	877	1,364	256
1981	587,797	561,821	15,104	2,113	4,267	1,976	991	1,262	263
1980	589,616	567,568	14,229	2,090	1,321	2,062	1,001	1,170	175
1979	577,855	557,183	13,001	1,856	1,205	2,099	1,356	954	201
1978	551,540	527,861	11,549	1,875	4,906	2,325	1,924	825	275
1977	544,221	518,069	10,295	2,105	6,802	3,044	2,883	578	445
1976	514,479	488,335	8,954	2,480	7,378	2,728	3,675	550	379
1975	511,581	484,416	7,707	1,311	9,595	3,161	4,602	281	508

<sup>1</sup>Includes births occurring en route to or on arrival at hospital.<sup>2</sup>Includes births with place of delivery not stated.



Table 12. Percent distribution of live births by place of delivery and attendant, according to race of child: United States, 1975-83

[Based on 100 percent of births in selected States and on a 50-percent sample of births in all other States; see Technical notes]

Year and race of child	Place of delivery			Place of delivery and attendant at birth						
	Total	In hospital <sup>1</sup>	Not in hospital <sup>2</sup>	Total <sup>3</sup>	In hospital <sup>1</sup>			Not in hospital <sup>2</sup>		
					Physician	Midwife	Other	Physician	Midwife	Other
<b>All races</b>										
1983	100.0	98.9	1.1	100.0	96.7	2.0	0.3	0.3	0.4	0.3
1982	100.0	99.0	1.0	100.0	97.0	1.7	0.3	0.3	0.4	0.3
1981	100.0	99.0	1.0	100.0	97.1	1.5	0.4	0.3	0.4	0.3
1980	100.0	99.0	1.0	100.0	97.1	1.4	0.5	0.3	0.3	0.3
1979	100.0	99.0	1.0	100.0	97.5	1.3	0.3	0.3	0.3	0.3
1978	100.0	99.0	1.0	100.0	97.6	1.1	0.4	0.4	0.3	0.3
1977	100.0	99.0	1.0	100.0	97.8	0.9	0.4	0.4	0.3	0.2
1976	100.0	99.1	0.9	100.0	97.9	0.8	0.4	0.4	0.3	0.2
1975	100.0	99.1	0.9	100.0	98.4	0.6	0.2	0.4	0.3	0.1
<b>White</b>										
1983	100.0	98.8	1.2	100.0	96.9	1.7	0.3	0.3	0.5	0.3
1982	100.0	98.9	1.1	100.0	97.2	1.5	0.3	0.3	0.5	0.3
1981	100.0	98.9	1.1	100.0	97.3	1.3	0.3	0.3	0.4	0.3
1980	100.0	99.0	1.0	100.0	97.3	1.2	0.5	0.3	0.3	0.3
1979	100.0	99.0	1.0	100.0	97.7	1.0	0.3	0.3	0.3	0.3
1978	100.0	99.0	1.0	100.0	97.8	0.8	0.4	0.3	0.3	0.3
1977	100.0	99.1	0.9	100.0	98.1	0.7	0.4	0.4	0.3	0.2
1976	100.0	99.2	0.8	100.0	98.3	0.5	0.4	0.4	0.2	0.2
1975	100.0	99.3	0.7	100.0	98.8	0.4	0.2	0.3	0.2	0.1
<b>All other</b>										
1983	100.0	99.3	0.7	100.0	95.8	3.0	0.6	0.3	0.1	0.3
1982	100.0	99.2	0.8	100.0	96.0	2.8	0.5	0.3	0.2	0.3
1981	100.0	99.2	0.8	100.0	96.1	2.6	0.5	0.3	0.2	0.2
1980	100.0	99.2	0.8	100.0	96.2	2.5	0.5	0.4	0.2	0.2
1979	100.0	99.2	0.8	100.0	96.6	2.3	0.4	0.4	0.2	0.2
1978	100.0	99.0	1.0	100.0	96.5	2.2	0.4	0.4	0.3	0.2
1977	100.0	98.8	1.2	100.0	96.4	2.0	0.5	0.5	0.5	0.1
1976	100.0	98.7	1.3	100.0	96.3	1.8	0.5	0.5	0.6	0.1
1975	100.0	98.5	1.5	100.0	96.6	1.7	0.3	0.6	0.8	0.1
<b>Black</b>										
1983	100.0	99.3	0.7	100.0	96.0	3.0	0.4	0.3	0.1	0.2
1982	100.0	99.3	0.7	100.0	96.2	2.7	0.4	0.3	0.1	0.2
1981	100.0	99.2	0.8	100.0	96.3	2.6	0.4	0.3	0.2	0.2
1980	100.0	99.3	0.7	100.0	96.5	2.4	0.4	0.4	0.2	0.2
1979	100.0	99.2	0.8	100.0	96.7	2.3	0.3	0.4	0.2	0.2
1978	100.0	99.0	1.0	100.0	96.6	2.1	0.3	0.4	0.4	0.2
1977	100.0	98.7	1.3	100.0	96.5	1.9	0.4	0.6	0.5	0.1
1976	100.0	98.6	1.4	100.0	96.4	1.8	0.5	0.5	0.7	0.1
1975	100.0	98.3	1.7	100.0	96.6	1.5	0.3	0.6	0.9	0.1

<sup>1</sup>Includes births occurring en route to or on arrival at hospital.

<sup>2</sup>Includes births with place of delivery not stated.

<sup>3</sup>Excludes births for which the attendant is not specified.

Table 13. Live births by age of father, age of mother, and race of child: United States, 1983

[Based on 100 percent of births in 46 States and on a 50-percent sample of births in 4 States and the District of Columbia; see Technical notes]

Age of mother and race of child	Total	Age of father									55 years and over	Not stated
		Under 15 years	15-19 years	20-24 years	25-29 years	30-34 years	35-39 years	40-44 years	45-49 years	50-54 years		
All races <sup>1</sup>												
All ages . . . . .	3,638,933	228	115,917	721,603	1,070,407	781,979	334,879	103,577	31,693	11,291	6,667	460,692
Under 15 years. . .	9,752	91	2,005	705	114	32	13	6	1	-	-	6,785
15-19 years. . . .	489,286	100	93,240	177,144	35,506	7,727	2,330	764	307	116	95	171,957
20-24 years. . . .	1,160,274	15	18,902	461,947	390,118	89,382	23,396	7,210	2,288	906	653	165,457
25-29 years. . . .	1,147,720	11	1,439	70,858	561,738	334,964	76,205	19,526	5,882	2,139	1,253	73,705
30-34 years. . . .	624,516	9	277	9,176	73,709	317,726	147,544	31,983	8,896	3,202	1,831	30,163
35-39 years. . . .	180,353	2	47	1,606	8,476	30,248	81,134	34,327	9,073	3,182	1,848	10,410
40-44 years. . . .	25,882	-	7	159	732	1,859	4,203	9,588	4,830	1,505	894	2,105
45-49 years. . . .	1,150	-	-	8	14	41	54	173	416	241	93	110
White												
All ages . . . . .	2,904,250	124	89,625	605,357	922,592	668,454	280,176	82,572	23,807	8,189	4,561	218,793
Under 15 years. . .	4,031	28	973	522	78	24	11	6	1	-	-	2,388
15-19 years. . . .	338,152	68	71,634	145,395	28,937	6,134	1,876	599	232	79	68	83,130
20-24 years. . . .	917,533	11	15,563	391,664	332,170	72,861	18,684	5,530	1,614	619	418	78,399
25-29 years. . . .	956,098	8	1,175	58,907	491,824	285,850	62,557	15,254	4,285	1,474	772	33,992
30-34 years. . . .	520,547	7	232	7,371	62,077	276,833	124,337	25,249	6,588	2,290	1,245	14,318
35-39 years. . . .	146,973	2	43	1,357	6,888	25,234	69,295	28,016	6,979	2,426	1,341	5,392
40-44 years. . . .	20,114	-	5	135	609	1,485	3,374	7,790	3,798	1,135	659	1,124
45-49 years. . . .	802	-	-	6	9	33	42	128	310	166	58	50
Black												
All ages . . . . .	586,027	95	22,653	93,714	109,601	74,160	34,488	14,233	5,538	2,276	1,571	227,698
Under 15 years. . .	5,439	60	957	151	30	8	1	-	-	-	-	4,232
15-19 years. . . .	136,666	30	18,861	26,509	5,047	1,200	368	130	64	35	22	84,400
20-24 years. . . .	203,062	2	2,624	56,656	44,512	11,582	3,510	1,315	555	244	198	81,864
25-29 years. . . .	143,584	3	187	8,993	50,929	32,247	8,850	3,190	1,228	524	373	37,060
30-34 years. . . .	70,682	-	21	1,230	7,965	25,793	13,901	4,485	1,592	645	438	14,612
35-39 years. . . .	22,390	-	3	156	1,031	3,098	7,355	3,915	1,350	544	349	4,589
40-44 years. . . .	4,006	-	-	17	85	228	495	1,171	687	253	172	898
45-49 years. . . .	198	-	-	2	2	4	8	27	62	31	19	43

<sup>1</sup>Includes races other than white and black.

**Table 14. Birth rates by age of father and race of child: United States, 1970 and 1975-83**

[Rates are live births per 1,000 men in specified group, enumerated as of April 1 for 1970 and 1980 and estimated as of July 1 for all other years. Figures for age of father not stated are distributed]

Year and race of child	Age of father									
	15-54 years <sup>1</sup>	15-19 years <sup>2</sup>	20-24 years	25-29 years	30-34 years	35-39 years	40-44 years	45-49 years	50-54 years	55 years and over
<b>All races</b>										
1983 <sup>3</sup>	55.3	18.4	83.5	113.9	88.7	45.3	17.2	6.4	2.3	0.3
1982 <sup>3</sup>	56.4	18.7	86.1	117.4	90.4	44.2	17.6	6.4	2.4	0.4
1981 <sup>3</sup>	56.3	18.5	88.0	119.7	88.6	43.2	16.9	6.3	2.3	0.4
1980 <sup>3</sup>	57.0	18.8	92.0	123.0	91.0	42.8	17.1	6.1	2.2	0.4
1979 <sup>3</sup>	55.8	18.5	90.6	122.4	89.3	42.2	16.7	6.0	2.3	0.3
1978 <sup>3</sup>	54.1	18.1	89.7	120.0	86.7	40.8	16.3	5.8	2.2	0.3
1977 <sup>3</sup>	54.9	19.1	92.8	124.2	85.9	41.1	16.5	6.0	2.2	0.3
1976 <sup>3</sup>	53.2	19.4	92.1	120.3	82.6	39.8	16.2	6.0	2.1	0.3
1975 <sup>3</sup>	53.8	20.8	96.2	123.9	81.5	39.9	16.5	6.1	2.2	0.4
1970 <sup>4</sup>	71.5	25.6	146.6	175.0	112.3	57.6	24.9	9.1	3.1	0.6
<b>White</b>										
1983 <sup>3</sup>	51.5	14.4	76.4	110.0	85.4	42.0	15.1	5.2	1.8	0.2
1982 <sup>3</sup>	52.5	14.8	79.2	113.3	86.7	40.9	15.4	5.2	1.8	0.3
1981 <sup>3</sup>	52.3	14.9	80.7	115.2	84.7	39.7	14.7	5.1	1.8	0.3
1980 <sup>3</sup>	52.9	15.2	84.0	118.4	86.9	39.2	14.7	5.0	1.8	0.3
1979 <sup>3</sup>	51.6	14.9	82.2	117.4	85.3	38.7	14.6	5.0	1.8	0.2
1978 <sup>3</sup>	50.0	14.7	81.0	115.0	82.9	37.4	14.2	4.9	1.7	0.2
1977 <sup>3</sup>	50.9	15.5	84.0	119.4	82.7	37.8	14.5	5.1	1.7	0.2
1976 <sup>3</sup>	49.3	15.8	83.2	115.6	79.7	36.7	14.4	5.1	1.7	0.2
1975 <sup>3</sup>	49.8	17.1	86.6	119.5	78.6	36.8	14.8	5.2	1.7	0.3
1970 <sup>4</sup>	67.1	21.0	135.3	170.9	109.3	54.5	22.9	7.9	2.6	0.4
<b>All other</b>										
1983 <sup>3</sup>	78.2	36.9	122.2	136.6	109.4	68.6	31.6	14.7	6.2	1.2
1982 <sup>3</sup>	80.1	37.3	123.5	141.9	112.9	67.6	32.6	14.7	6.6	1.3
1981 <sup>3</sup>	81.2	36.3	129.7	147.4	113.9	68.0	32.3	14.3	6.2	1.3
1980 <sup>3</sup>	83.6	37.5	139.0	152.3	118.9	68.6	33.7	14.3	6.2	1.3
1979 <sup>3</sup>	83.5	37.5	141.1	155.1	118.2	68.2	32.3	14.0	6.3	1.2
1978 <sup>3</sup>	81.9	36.7	143.1	153.2	114.6	66.5	31.8	13.1	5.9	1.2
1977 <sup>3</sup>	82.3	38.9	147.3	156.7	110.4	65.3	31.1	13.2	6.2	1.2
1976 <sup>3</sup>	80.1	39.2	148.8	153.9	104.4	62.4	29.3	13.2	5.9	1.3
1975 <sup>3</sup>	81.8	42.4	158.5	156.4	102.5	63.5	29.4	13.1	6.0	1.4
1970 <sup>4</sup>	104.5	55.2	224.9	202.6	135.1	82.4	42.5	20.4	9.0	2.7
<b>Black</b>										
1983 <sup>3</sup>	78.0	40.8	131.3	136.3	99.9	61.2	29.5	13.9	5.9	1.2
1982 <sup>3</sup>	79.8	40.7	129.4	141.8	104.0	61.2	30.5	14.1	6.3	1.2
1981 <sup>3</sup>	81.2	39.3	136.6	148.1	105.2	61.9	30.3	13.6	6.0	1.2
1980 <sup>3</sup>	83.8	40.4	146.6	154.2	110.8	62.8	31.5	13.8	6.0	1.2
1979 <sup>3</sup>	83.7	40.2	148.7	156.7	109.8	62.3	30.7	13.7	6.2	1.1
1978 <sup>3</sup>	81.9	39.0	150.7	154.1	106.3	61.0	30.1	12.7	5.7	1.1
1977 <sup>3</sup>	82.9	41.4	155.2	158.6	104.5	60.5	30.1	12.7	6.1	1.1
1976 <sup>3</sup>	80.4	41.7	156.6	154.3	97.7	57.2	28.0	12.7	5.7	1.1
1975 <sup>3</sup>	82.1	45.0	167.3	156.8	95.5	57.7	28.5	12.6	5.9	1.1
1970 <sup>4</sup>	107.4	58.7	243.7	209.6	132.6	80.9	41.9	20.6	8.8	2.1

<sup>1</sup>Rates computed by relating total births, regardless of age of father, to men aged 15-54 years.

<sup>2</sup>Rates computed by relating births of fathers under 20 years of age to men aged 15-19 years.

<sup>3</sup>Based on 100 percent of births in selected States and on a 50-percent sample of births in all other States; see Technical notes.

<sup>4</sup>Based on a 50-percent sample of births.

**Table 15. Number and percent low birth weight and live births by birth weight, by age of mother and race of child: United States, 1983**

[Based on 100 percent of births in 46 States and on a 50-percent sample of births in 4 States and the District of Columbia; see Technical notes]

Age of mother and race of child	Low birth weight <sup>1</sup>		Total	Birth weight <sup>2</sup>										Not stated	
	Number	Percent		Less than 500	500- 999	1,000- 1,499	1,500- 1,999	2,000- 2,499	2,500- 2,999	3,000- 3,499	3,500- 3,999	4,000- 4,499	4,500- 4,999		5,000 grams or more
				grams	grams	grams	grams	grams	grams	grams	grams	grams	grams		grams
<b>All races</b>															
All ages.....	247,668	6.8	3,638,933	4,368	16,572	22,221	47,309	157,198	586,801	1,341,162	1,062,902	326,601	60,324	8,131	5,344
Under 15 years.....	1,415	14.5	9,752	44	174	176	290	731	2,389	3,764	1,784	333	40	6	21
15-19 years.....	46,087	9.4	489,286	728	3,174	4,517	9,011	28,657	100,995	191,458	117,846	27,832	3,891	440	737
15 years.....	2,962	12.0	24,686	48	214	324	591	1,785	5,607	9,728	5,156	1,075	106	14	38
16 years.....	5,881	10.7	55,000	88	464	660	1,172	3,497	12,117	21,677	12,197	2,650	334	43	101
17 years.....	9,299	10.0	92,987	139	649	919	1,859	5,733	19,778	36,639	21,573	4,888	607	56	147
18 years.....	12,837	9.4	136,921	222	796	1,249	2,510	8,060	27,842	53,886	33,090	7,855	1,090	123	198
19 years.....	15,108	8.4	179,692	231	1,051	1,365	2,879	9,582	35,651	69,528	45,830	11,364	1,754	204	253
20-24 years.....	80,778	7.0	1,160,274	1,387	5,210	7,042	14,987	52,152	199,931	440,483	327,642	92,548	15,452	1,819	1,621
25-29 years.....	67,602	5.9	1,147,720	1,249	4,512	5,780	12,749	43,312	168,444	418,417	354,620	113,231	21,080	2,694	1,632
30-34 years.....	37,052	5.9	624,516	695	2,580	3,359	7,236	23,182	85,841	218,047	197,583	68,744	14,200	2,114	935
35-39 years.....	12,409	6.9	180,353	233	788	1,138	2,558	7,692	25,134	60,258	55,484	20,934	4,884	914	336
40-44 years.....	2,219	8.6	25,882	28	129	198	459	1,405	3,879	8,348	7,625	2,873	745	138	55
45-49 years.....	106	9.3	1,150	4	5	11	19	67	188	387	318	106	32	6	7
<b>White</b>															
All ages.....	164,366	5.7	2,904,250	2,521	10,050	14,301	31,281	106,213	416,750	1,055,867	909,569	291,733	54,700	7,142	4,123
Under 15 years.....	505	12.5	4,031	10	53	71	116	255	797	1,506	981	206	27	5	4
15-19 years.....	25,995	7.7	338,152	369	1,668	2,539	5,132	16,287	60,683	131,860	91,822	23,554	3,394	375	469
15 years.....	1,310	9.8	13,368	23	93	161	272	761	2,551	5,255	3,326	814	86	9	17
16 years.....	2,965	8.8	33,811	43	223	340	624	1,735	6,288	13,307	8,765	2,124	274	31	57
17 years.....	5,109	8.2	62,462	67	332	508	1,025	3,177	11,520	24,524	16,571	4,068	524	46	100
18 years.....	7,489	7.8	96,464	121	435	724	1,475	4,734	17,239	37,873	25,979	6,668	975	105	136
19 years.....	9,122	6.9	132,047	115	585	806	1,736	5,880	23,085	50,901	37,181	9,880	1,535	184	159
20-24 years.....	52,727	5.8	917,533	763	3,080	4,474	9,672	34,738	141,284	345,075	279,116	82,448	14,027	1,606	1,250
25-29 years.....	47,973	5.0	956,098	778	2,875	3,975	9,004	31,341	127,285	343,819	311,246	102,697	19,342	2,413	1,323
30-34 years.....	26,702	5.1	520,547	423	1,747	2,343	5,190	16,999	65,097	178,945	172,465	61,827	12,902	1,837	772
35-39 years.....	8,883	6.1	146,973	155	544	760	1,842	5,582	18,735	48,108	47,385	18,482	4,332	789	259
40-44 years.....	1,519	7.6	20,114	20	80	132	317	970	2,754	6,286	6,312	2,441	649	112	41
45-49 years.....	62	7.8	802	3	3	7	8	41	115	268	242	78	27	5	5
<b>All other</b>															
All ages.....	83,302	11.4	734,683	1,847	6,522	7,920	16,028	50,985	170,051	285,295	153,333	34,868	5,624	989	1,221
Under 15 years.....	910	16.0	5,721	34	121	105	174	476	1,592	2,258	803	127	13	1	17
15-19 years.....	20,092	13.3	151,134	359	1,506	1,978	3,879	12,370	40,312	59,598	26,024	4,278	497	65	268
15 years.....	1,652	14.6	11,318	25	121	163	319	1,024	3,056	4,473	1,830	261	20	5	21
16 years.....	2,916	13.8	21,189	45	241	320	548	1,762	5,829	8,370	3,432	526	60	12	44
17 years.....	4,190	13.7	30,525	72	317	411	834	2,556	8,258	12,115	5,002	820	83	10	47
18 years.....	5,348	13.2	40,457	101	361	525	1,035	3,326	10,603	16,013	7,111	1,187	115	18	62
19 years.....	5,986	12.6	47,645	116	466	559	1,143	3,702	12,566	18,627	8,649	1,484	219	20	94
20-24 years.....	28,051	11.6	242,741	624	2,130	2,568	5,315	17,414	58,647	95,408	48,526	10,100	1,425	213	371
25-29 years.....	19,629	10.3	191,622	471	1,637	1,805	3,745	11,971	41,159	74,598	43,374	10,534	1,738	281	309
30-34 years.....	10,350	10.0	103,969	272	833	1,016	2,046	6,183	20,744	39,102	25,118	6,917	1,298	277	163

35-39 years.....	3,526	10.6	33,380	78	244	378	716	2,110	6,399	12,150	8,099	2,452	552	125	77
40-44 years.....	700	12.2	5,768	8	49	66	142	435	1,125	2,062	1,313	432	96	26	14
45-49 years.....	44	12.7	348	1	2	4	11	26	73	119	76	28	5	1	2
Black															
All ages.....	73,658	12.6	586,027	1,729	6,016	7,160	14,384	44,369	140,874	224,316	116,112	25,348	3,987	726	1,006
Under 15 years.....	879	16.2	5,439	32	120	102	166	459	1,527	2,142	752	114	11	1	13
15-19 years.....	18,968	13.9	136,666	346	1,433	1,880	3,664	11,645	37,374	53,754	22,470	3,446	371	52	231
15 years.....	1,591	14.9	10,678	25	118	154	305	989	2,907	4,244	1,669	224	19	5	19
16 years.....	2,770	14.1	19,642	44	223	312	514	1,677	5,552	7,740	3,043	434	50	11	42
17 years.....	3,948	14.2	27,840	70	306	384	788	2,400	7,725	11,037	4,360	665	60	8	37
18 years.....	5,076	13.9	36,443	98	346	495	980	3,157	9,777	14,371	6,117	958	77	14	53
19 years.....	5,583	13.3	42,063	109	440	535	1,077	3,422	11,413	16,362	7,281	1,165	165	14	80
20-24 years.....	25,402	12.5	203,062	597	2,003	2,385	4,861	15,556	50,564	79,035	38,944	7,621	1,033	158	305
25-29 years.....	16,713	11.7	143,584	429	1,502	1,593	3,274	9,915	31,839	54,441	31,297	7,631	1,205	209	249
30-34 years.....	8,329	11.8	70,682	251	709	840	1,705	4,824	14,396	25,669	16,472	4,590	896	195	135
35-39 years.....	2,794	12.5	22,390	67	209	310	587	1,621	4,358	7,822	5,237	1,639	391	89	60
40-44 years.....	546	13.7	4,006	7	38	48	120	333	776	1,391	892	293	76	21	11
45-49 years.....	27	13.8	198	-	2	2	7	16	40	62	48	14	4	1	2

<sup>1</sup>Less than 2,500 grams.

<sup>2</sup>Equivalents of the gram weight in terms of pounds and ounces are as follows:

Under 500 grams = 1 pound 1 ounce or less

500-999 grams = 1 pound 2 ounces-2 pounds 3 ounces

1,000-1,499 grams = 2 pounds 4 ounces-3 pounds 4 ounces

1,500-1,999 grams = 3 pounds 5 ounces-4 pounds 6 ounces

2,000-2,499 grams = 4 pounds 7 ounces-5 pounds 8 ounces

2,500-2,999 grams = 5 pounds 9 ounces-6 pounds 9 ounces

3,000-3,499 grams = 6 pounds 10 ounces-7 pounds 11 ounces

3,500-3,999 grams = 7 pounds 12 ounces-8 pounds 13 ounces

4,000-4,499 grams = 8 pounds 14 ounces-9 pounds 14 ounces

4,500-4,999 grams = 9 pounds 15 ounces-11 pounds 0 ounces

5,000 grams or more = 11 pounds 1 ounce or more

Table 16. Number and percent of births of low birth weight and number and ratio of births to unmarried women, by race of child: United States and each State, 1983

[By place of residence. Based on 100 percent of births in 46 States and on a 50-percent sample of births in 4 States and the District of Columbia; see Technical notes]

State	Low birth weight <sup>1</sup>						Births to unmarried women					
	Number			Percent			Number			Ratio per 1,000 live births		
	All races <sup>2</sup>	White	Black	All races <sup>2</sup>	White	Black	All races <sup>2</sup>	White	Black	All races <sup>2</sup>	White	Black
United States . . . . .	247,668	164,366	73,658	6.8	5.7	12.6	737,893	370,884	341,077	202.8	127.7	582.0
Alabama . . . . .	4,681	2,298	2,356	7.9	6.0	11.6	14,041	2,715	11,311	237.7	70.6	557.9
Alaska . . . . .	559	381	29	4.7	4.5	5.5	2,023	788	124	168.6	93.5	236.2
Arizona . . . . .	3,260	2,615	294	6.1	5.8	12.7	12,006	7,856	1,222	223.2	174.9	526.5
Arkansas . . . . .	2,734	1,597	1,105	7.8	6.1	13.1	7,668	2,521	5,118	219.1	96.5	605.6
California <sup>3</sup> . . . . .	26,140	18,185	5,089	6.0	5.3	11.4	100,798	70,702	24,356	231.1	205.3	543.7
Colorado . . . . .	4,340	3,823	359	7.9	7.6	13.3	7,929	6,670	1,063	145.1	132.9	393.4
Connecticut <sup>3</sup> . . . . .	2,647	1,970	636	6.4	5.6	12.6	8,254	4,900	3,258	200.8	138.6	645.8
Delaware . . . . .	662	364	292	7.2	5.3	12.7	2,457	890	1,567	266.2	129.9	678.9
District of Columbia . . . . .	1,213	114	1,087	13.1	6.7	14.6	5,208	313	4,872	558.0	182.1	651.4
Florida . . . . .	11,097	6,466	4,497	7.4	5.9	12.0	37,282	13,806	23,329	250.1	125.6	623.0
Georgia . . . . .	7,570	3,473	3,991	8.4	6.1	12.7	21,733	4,464	17,233	241.4	77.6	547.5
Hawaii . . . . .	1,346	281	87	7.0	5.8	10.9	3,753	682	89	196.3	140.7	111.3
Idaho . . . . .	1,041	999	13	5.6	5.5	14.1	1,759	1,605	20	93.8	88.5	215.1
Illinois . . . . .	12,852	7,291	5,288	7.2	5.3	13.9	42,971	16,145	26,534	240.2	117.9	698.9
Indiana . . . . .	5,094	3,982	1,073	6.3	5.6	12.2	14,701	8,895	5,763	181.9	124.7	652.7
Iowa . . . . .	2,175	2,018	120	5.0	4.9	11.9	5,175	4,469	609	119.6	107.4	602.4
Kansas . . . . .	2,456	1,971	399	6.1	5.5	12.0	5,255	3,407	1,697	130.1	94.8	508.4
Kentucky . . . . .	3,764	3,144	600	6.9	6.4	12.3	9,024	6,168	2,839	165.0	124.9	582.4
Louisiana . . . . .	7,107	2,886	4,129	8.6	5.8	13.4	20,934	4,142	16,669	253.7	82.6	538.5
Maine . . . . .	930	911	4	5.6	5.6	4.1	2,533	2,445	22	152.0	149.6	226.8
Maryland <sup>3</sup> . . . . .	4,926	2,370	2,436	7.7	5.5	12.7	17,925	5,732	11,918	280.3	133.8	618.1
Massachusetts . . . . .	4,463	3,732	613	5.9	5.4	11.4	12,750	9,670	2,882	167.6	140.5	536.5
Michigan <sup>3</sup> . . . . .	9,356	6,093	3,110	7.0	5.6	14.2	22,257	10,338	11,753	167.2	94.8	536.1
Minnesota . . . . .	3,296	2,927	201	5.1	4.9	12.3	8,319	6,442	975	126.9	105.3	593.8
Mississippi . . . . .	3,875	1,340	2,513	8.8	5.9	12.0	13,723	1,589	12,042	311.9	70.1	576.4
Missouri . . . . .	5,065	3,474	1,523	6.7	5.5	13.1	14,945	7,033	7,826	197.7	111.6	672.0
Montana <sup>3</sup> . . . . .	788	684	8	5.6	5.5	11.3	2,025	1,307	23	144.0	105.0	323.9
Nebraska . . . . .	1,422	1,224	150	5.4	5.0	11.3	3,387	2,396	793	129.1	98.8	598.0
Nevada <sup>3</sup> . . . . .	998	769	150	7.0	6.5	10.3	2,069	1,221	719	144.6	103.4	493.8
New Hampshire . . . . .	697	681	9	5.1	5.0	9.5	1,661	1,631	23	120.4	120.3	242.1
New Jersey . . . . .	7,103	4,372	2,540	7.2	5.7	12.8	21,750	9,427	12,171	219.3	122.7	615.0
New Mexico . . . . .	2,074	1,729	89	7.6	7.6	12.5	6,363	4,378	266	230.4	190.7	371.0
New York <sup>3</sup> . . . . .	17,881	11,011	6,391	7.2	5.9	12.0	64,947	31,518	32,848	261.2	167.9	615.3
North Carolina . . . . .	6,577	3,395	2,995	7.8	5.9	12.4	17,253	4,169	12,573	205.7	72.5	521.6
North Dakota . . . . .	587	524	8	4.7	4.6	5.9	1,329	886	7	107.4	78.3	51.9
Ohio <sup>3</sup> . . . . .	10,667	7,633	2,909	6.7	5.7	13.1	31,115	16,706	14,277	196.0	124.0	638.7
Oklahoma . . . . .	3,786	2,748	647	6.7	6.1	11.9	8,664	4,534	2,814	152.3	100.2	518.6
Oregon . . . . .	2,001	1,788	95	5.0	4.8	9.7	6,480	5,554	545	162.1	149.7	555.0
Pennsylvania . . . . .	10,527	7,543	2,838	6.7	5.6	13.8	31,845	17,509	14,143	201.3	129.2	686.5
Rhode Island . . . . .	808	670	94	6.4	6.0	11.0	2,228	1,660	508	176.9	147.5	594.8
South Carolina . . . . .	4,385	1,868	2,493	8.6	6.1	12.6	12,845	2,471	10,353	253.1	81.2	521.6
South Dakota . . . . .	644	506	8	5.1	4.8	8.0	2,023	956	24	161.5	90.6	240.0
Tennessee . . . . .	5,240	3,291	1,916	8.0	6.5	13.3	14,420	5,295	9,104	220.2	104.9	630.3
Texas <sup>3</sup> . . . . .	20,370	14,881	5,056	6.9	6.0	12.6	43,769	24,623	18,890	148.2	98.9	472.2
Utah . . . . .	2,197	2,059	31	5.6	5.5	10.3	2,980	2,567	119	75.5	68.5	395.3
Vermont . . . . .	465	461	3	5.9	5.9	13.0	1,260	1,246	8	158.4	158.0	347.8
Virginia . . . . .	5,812	3,354	2,337	7.2	5.7	12.1	16,646	5,931	10,591	206.2	99.9	548.3
Washington . . . . .	3,597	3,006	282	5.2	5.0	9.3	10,856	8,511	1,187	158.1	140.7	391.5
West Virginia . . . . .	1,736	1,612	113	6.7	6.5	11.1	4,010	3,466	540	154.9	140.1	531.5
Wisconsin . . . . .	3,933	3,171	640	5.4	4.8	12.8	11,493	7,610	3,415	158.4	115.7	684.0
Wyoming . . . . .	724	681	12	7.1	7.0	11.0	1,052	925	45	102.5	94.8	412.8

<sup>1</sup>Less than 2,500 grams (5 pounds 8 ounces).<sup>2</sup>Includes races other than white and black.<sup>3</sup>Marital status of mother is inferred; see Technical notes.

**Table 17. Numbers, rates, and ratios of births to unmarried women, by age of mother and race of child: United States, 1983**

[Based on 100 percent of births in 46 States and on a 50-percent sample of births in 4 States and the District of Columbia; see Technical notes. For 41 States and the District of Columbia, marital status of mother is reported on the birth certificate, and for 9 States, mother's marital status is inferred; see Technical notes. Populations estimated as of July 1]

Age of mother	Number				Rate per 1,000 unmarried women in specified group				Ratio per 1,000 live births			
	All races	White	All other		All races	White	All other		All races	White	All other	
			Total	Black			Total	Black			Total	Black
All ages . . . . .	737,893	370,884	367,009	341,077	130.4	119.3	172.3	177.7	202.8	127.7	499.5	582.0
Under 15 years . . . . .	8,816	3,222	5,594	5,354	---	---	---	---	904.0	799.3	977.8	984.4
15-19 years . . . . .	261,260	132,494	128,766	120,946	29.7	18.5	78.3	86.4	534.0	391.8	852.0	885.0
15 years . . . . .	20,078	9,107	10,971	10,461	22.1	13.5	60.2	67.1	813.3	681.3	969.3	979.7
16 years . . . . .	39,356	19,412	19,944	18,841					715.6	574.1	941.2	959.2
17 years . . . . .	57,191	29,613	27,578	25,889	41.0	26.1	104.6	114.0	615.0	474.1	903.5	929.9
18 years . . . . .	70,716	36,548	34,168	32,058					516.5	378.9	844.6	879.7
19 years . . . . .	73,919	37,814	36,105	33,697					411.4	286.4	757.8	801.1
20-24 years . . . . .	265,579	132,396	133,183	123,937	42.0	26.4	101.1	110.0	228.9	144.3	548.7	610.3
25-29 years . . . . .	126,519	62,420	64,099	59,052	35.6	22.9	77.3	82.0	110.2	65.3	334.5	411.3
30-34 years . . . . .	53,884	27,933	25,951	23,416	22.3	15.3	44.7	45.3	86.3	53.7	249.6	331.3
35-39 years . . . . .	18,206	10,326	7,880	7,017	10.3	7.5	20.1	20.3	100.9	70.3	236.1	313.4
40 years and over . . . . .	3,629	2,093	1,536	1,355	22.5	21.9	24.9	24.9	134.2	100.1	251.1	322.3

<sup>1</sup>Rates computed by relating total births to unmarried mothers, regardless of age of mother, to unmarried women aged 15-44 years.

<sup>2</sup>Rates computed by relating births to unmarried mothers aged 40 years and over to unmarried women aged 40-44 years.

Table 18. Birth rates for unmarried women by age of mother and race of child: United States, 1970-83

[Rates are live births to unmarried women per 1,000 unmarried women in specified group, estimated as of July 1]

Year and race of child	Age of mother								
	15-44 years <sup>1</sup>	15-19 years			20-24 years	25-29 years	30-34 years	35-39 years	40-44 years <sup>2</sup>
		Total	15-17 years	18-19 years					
<b>ALL RACES</b>									
Reported and/or inferred <sup>3</sup>									
1983 <sup>4</sup> .....	30.4	29.7	22.1	41.0	42.0	35.6	22.3	10.3	2.5
1982 <sup>4</sup> .....	30.0	28.9	21.5	40.2	41.4	35.1	21.9	10.0	2.7
1981 <sup>4</sup> .....	29.6	28.2	20.9	39.9	40.9	34.7	20.8	9.8	2.6
1980 <sup>4</sup> .....	29.4	27.6	20.6	39.0	40.9	34.0	21.1	9.7	2.6
Estimated <sup>5</sup>									
1980 <sup>4</sup> .....	28.4	27.5	20.7	38.7	39.7	31.4	18.5	8.4	2.3
1979 <sup>4</sup> .....	27.2	26.4	19.9	37.2	37.7	29.9	17.7	8.4	2.3
1978 <sup>4</sup> .....	25.7	24.9	19.1	35.1	35.3	28.5	16.9	8.2	2.2
1977 <sup>4</sup> .....	25.6	25.1	19.8	34.6	34.0	27.7	16.9	8.4	2.4
1976 <sup>4</sup> .....	24.3	23.7	19.0	32.1	31.7	26.8	17.5	9.0	2.5
1975 <sup>4</sup> .....	24.5	23.9	19.3	32.5	31.2	27.5	17.9	9.1	2.6
1974 <sup>4</sup> .....	23.9	23.0	18.8	31.2	30.5	27.9	18.4	10.0	2.6
1973 <sup>4</sup> .....	24.3	22.7	18.7	30.4	31.5	29.6	20.3	10.8	3.0
1972 <sup>4</sup> .....	24.8	22.8	18.5	30.9	33.2	30.8	22.6	12.0	3.1
1971 <sup>6</sup> .....	25.5	22.3	17.5	31.7	35.5	34.5	25.2	13.3	3.5
1970 <sup>6</sup> .....	26.4	22.4	17.1	32.9	38.4	37.0	27.1	13.6	3.5
<b>WHITE</b>									
Reported and/or inferred <sup>3</sup>									
1983 <sup>4</sup> .....	19.3	18.5	13.5	26.1	26.4	22.9	15.3	7.5	1.9
1982 <sup>4</sup> .....	18.8	17.7	12.9	25.1	25.7	22.2	14.7	7.1	2.0
1981 <sup>4</sup> .....	18.2	17.1	12.4	24.6	24.9	21.6	13.6	6.9	1.8
1980 <sup>4</sup> .....	17.6	16.2	11.8	23.6	24.4	20.7	13.6	6.8	1.8
Estimated <sup>5</sup>									
1980 <sup>4</sup> .....	16.2	15.9	11.7	22.8	22.4	17.3	10.5	5.3	1.4
1979 <sup>4</sup> .....	14.9	14.6	10.8	21.0	20.3	15.9	10.0	5.1	1.4
1978 <sup>4</sup> .....	13.7	13.6	10.3	19.3	18.1	14.8	9.4	4.8	1.3
1977 <sup>4</sup> .....	13.5	13.4	10.5	18.7	17.4	14.4	9.3	4.9	1.4
1976 <sup>4</sup> .....	12.6	12.3	9.7	16.9	15.8	14.0	10.1	5.5	1.4
1975 <sup>4</sup> .....	12.4	12.0	9.6	16.5	15.5	14.8	9.8	5.4	1.5
1974 <sup>4</sup> .....	11.7	11.0	8.8	15.3	15.0	14.7	9.5	5.5	1.5
1973 <sup>4</sup> .....	11.8	10.6	8.4	14.9	15.5	15.9	10.6	5.9	1.7
1972 <sup>4</sup> .....	11.9	10.4	8.0	15.1	16.6	16.5	12.1	6.5	1.6
1971 <sup>6</sup> .....	12.5	10.3	7.4	15.8	18.7	18.5	13.2	7.2	1.9
1970 <sup>6</sup> .....	13.9	10.9	7.5	17.6	22.5	21.1	14.2	7.6	2.0
<b>ALL OTHER</b>									
Reported and/or inferred <sup>3</sup>									
1983 <sup>4</sup> .....	72.3	78.3	60.2	104.6	101.1	77.3	44.7	20.1	4.9
1982 <sup>4</sup> .....	73.9	79.2	60.7	107.0	102.1	78.9	44.4	20.0	5.4
1981 <sup>4</sup> .....	75.4	79.2	60.3	109.0	104.5	80.1	45.6	19.7	5.7
1980 <sup>4</sup> .....	77.2	81.7	63.1	111.6	106.6	79.1	46.9	19.2	5.6
Estimated <sup>5</sup>									
1980 <sup>4</sup> .....	78.0	83.0	64.0	113.4	108.2	79.1	46.2	18.5	5.3
1979 <sup>4</sup> .....	78.2	83.9	64.8	115.3	107.1	77.7	44.8	19.1	5.7
1978 <sup>4</sup> .....	76.5	81.2	63.2	111.6	104.9	76.4	43.6	18.2	5.6
1977 <sup>4</sup> .....	77.4	84.0	67.2	112.7	103.1	74.4	43.7	18.5	6.6
1976 <sup>4</sup> .....	76.4	82.5	67.5	108.9	101.1	74.0	43.4	18.7	6.9
1975 <sup>4</sup> .....	79.0	86.3	70.7	114.3	102.1	73.2	47.9	20.0	6.9
1974 <sup>4</sup> .....	80.3	87.3	73.2	113.4	103.0	77.0	50.9	23.2	6.6
1973 <sup>4</sup> .....	83.2	88.5	75.6	112.8	107.8	81.0	55.8	26.2	7.2
1972 <sup>4</sup> .....	86.2	91.8	77.6	119.3	112.4	83.3	55.7	29.0	8.2
1971 <sup>6</sup> .....	90.2	92.0	75.4	125.4	120.6	92.6	65.3	32.2	10.4
1970 <sup>6</sup> .....	89.9	90.8	73.3	126.5	121.0	93.8	69.8	32.0	10.7

See footnotes at end of table.



Table 18. Birth rates for unmarried women by age of mother and race of child: United States, 1970-83—Con.

[Rates are live births to unmarried women per 1,000 unmarried women in specified group, estimated as of July 1]

Year and race of child	Age of mother								
	15-44 years <sup>1</sup>	15-19 years			20-24 years	25-29 years	30-34 years	35-39 years	40-44 years <sup>2</sup>
		Total	15-17 years	18-19 years					
<b>BLACK</b>									
Reported and/or inferred <sup>3</sup>									
1983 <sup>4</sup> .....	77.7	86.4	67.1	114.0	110.0	82.0	45.3	20.3	4.9
1982 <sup>4</sup> .....	79.6	87.0	67.6	115.8	110.2	85.5	45.8	20.1	5.4
1981 <sup>4</sup> .....	81.4	86.8	66.9	117.6	112.5	86.4	47.2	20.4	5.8
1980 <sup>4</sup> .....	82.9	89.2	69.6	120.2	115.1	83.9	48.2	19.6	5.6
Estimated <sup>5</sup>									
1980 <sup>4</sup> .....	83.2	90.3	70.6	121.8	116.0	82.9	47.0	18.5	5.5
1979 <sup>4</sup> .....	83.0	91.0	71.0	123.3	114.1	80.0	44.8	19.3	5.9
1978 <sup>4</sup> .....	81.1	87.9	68.8	119.6	111.4	79.6	43.9	18.5	6.2
1977 <sup>4</sup> .....	82.6	90.9	73.0	121.7	110.1	78.6	45.7	19.0	6.6
1976 <sup>4</sup> .....	81.6	89.7	73.5	117.9	107.2	78.0	45.0	19.2	7.0
1975 <sup>4</sup> .....	84.2	93.5	76.8	123.8	108.0	75.7	50.0	20.5	7.2
1974 <sup>4</sup> .....	85.5	93.8	78.6	122.2	109.8	80.3	51.8	24.3	6.7
1973 <sup>4</sup> .....	88.6	94.9	81.2	120.5	116.0	84.5	57.8	27.6	7.7
1972 <sup>4</sup> .....	91.6	98.2	82.8	128.2	121.2	88.3	57.4	30.4	8.5
1971 <sup>6</sup> .....	96.1	98.6	80.7	135.2	130.6	99.6	68.6	32.7	10.1
1970 <sup>6</sup> .....	95.5	96.9	77.9	136.4	131.5	100.9	71.8	32.9	10.4

<sup>1</sup>Rates computed by relating total births to unmarried mothers, regardless of age of mother, to unmarried women aged 15-44 years.

<sup>2</sup>Rates computed by relating births to unmarried mothers aged 40 years and over to unmarried women aged 40-44 years.

<sup>3</sup>Data for States in which marital status was not reported have been inferred and included with data from the remaining States; see Technical notes.

<sup>4</sup>Based on 100 percent of births in selected States and on a 50-percent sample of births in all other States; see Technical notes.

<sup>5</sup>Births to unmarried women are estimated for the United States from data for registration areas in which marital status of mother was reported; see Technical notes.

<sup>6</sup>Based on a 50-percent sample of births.

**Table 19. Live births by interval since last live birth, live-birth order, and race of child: Total of 49 reporting States and the District of Columbia, 1983**

[Based on 100 percent of births in selected States and on a 50-percent sample of births in all other States; see Technical notes. Refers only to second and higher order births. Live-birth order refers to number of children born alive to mother]

Interval since last live birth and race of child	Total, second and higher order births <sup>1</sup>	Live-birth order						
		2	3	4	5	6	7	8 and over
All races <sup>2</sup> . . . . .	1,916,104	1,090,853	507,673	187,974	70,486	30,032	13,909	15,177
0 months (plural deliveries) . . . . .	29,615	10,857	10,087	4,954	2,108	837	388	384
1-11 months . . . . .	30,058	14,724	8,123	3,976	1,695	789	330	421
12-17 months . . . . .	202,392	105,800	53,611	23,836	9,741	4,613	2,156	2,635
18-23 months . . . . .	257,959	145,770	65,903	26,380	10,444	4,556	2,259	2,647
24-35 months . . . . .	447,672	272,439	107,247	40,221	14,788	6,507	3,106	3,364
36-47 months . . . . .	294,201	179,376	74,072	25,180	8,802	3,528	1,512	1,731
48-59 months . . . . .	174,870	101,349	48,420	15,846	5,357	2,081	936	881
60-71 months . . . . .	111,020	62,458	32,325	10,278	3,494	1,330	588	547
72 months or more . . . . .	279,692	147,984	85,763	28,341	10,354	3,955	1,791	1,504
Not stated . . . . .	88,625	50,096	22,122	8,962	3,703	1,836	843	1,063
White . . . . .	1,503,440	887,094	394,553	136,229	47,624	19,482	8,904	9,554
0 months (plural deliveries) . . . . .	22,767	8,795	7,976	3,669	1,404	500	235	188
1-11 months . . . . .	18,919	10,207	5,067	2,170	815	352	127	181
12-17 months . . . . .	147,281	82,478	38,635	15,406	5,671	2,497	1,209	1,385
18-23 months . . . . .	207,419	122,047	52,088	19,759	7,180	3,107	1,466	1,772
24-35 months . . . . .	372,202	234,707	86,978	30,857	10,654	4,514	2,146	2,346
36-47 months . . . . .	240,636	151,334	59,726	18,770	6,187	2,448	1,026	1,145
48-59 months . . . . .	138,144	81,841	38,196	11,716	3,758	1,423	619	591
60-71 months . . . . .	84,667	48,236	24,954	7,485	2,380	882	385	345
72 months or more . . . . .	204,973	108,032	64,686	20,338	7,205	2,623	1,153	936
Not stated . . . . .	66,432	39,417	16,247	6,059	2,370	1,136	538	665
Black . . . . .	327,933	159,208	90,925	42,341	18,651	8,438	3,970	4,400
0 months (plural deliveries) . . . . .	5,856	1,727	1,769	1,125	626	300	137	172
1-11 months . . . . .	8,867	3,557	2,465	1,469	719	332	148	177
12-17 months . . . . .	43,127	17,637	12,053	6,762	3,272	1,702	727	974
18-23 months . . . . .	38,515	17,438	10,783	5,263	2,587	1,142	612	690
24-35 months . . . . .	57,847	27,755	16,032	7,575	3,377	1,575	747	786
36-47 months . . . . .	42,222	21,481	11,547	5,331	2,134	841	407	481
48-59 months . . . . .	29,442	15,437	8,220	3,408	1,347	543	255	232
60-71 months . . . . .	21,552	11,602	5,977	2,311	934	378	173	177
72 months or more . . . . .	63,064	34,043	17,453	6,793	2,624	1,140	544	467
Not stated . . . . .	17,441	8,531	4,626	2,304	1,031	485	220	244

<sup>1</sup>Excludes not stated birth order.<sup>2</sup>Includes races other than white and black.

NOTE: Excludes data for Texas, which did not require reporting of date of last live birth.

**Table 20. Live births by educational attainment of mother and father and race of child: Total of 47 reporting States and the District of Columbia, 1983**

[Based on 100 percent of births in selected States and on a 50-percent sample of births in all other States; see Technical notes]

Years of school completed	Mother			Father		
	All races <sup>1</sup>	White	Black	All races <sup>1</sup>	White	Black
Total .....	2,838,861	2,250,297	498,192	2,838,861	2,250,297	498,192
0-5 years .....	16,750	10,149	3,180	15,364	11,352	2,016
6 years .....	13,638	10,031	2,288	13,545	10,806	1,642
7 years .....	16,080	11,059	4,181	10,764	8,595	1,586
8 years .....	60,563	45,280	12,806	43,362	37,440	4,299
9 years .....	111,420	80,470	27,206	59,985	51,120	7,096
10 years .....	181,862	127,086	48,997	109,669	90,109	16,340
11 years .....	206,085	130,308	69,204	130,973	99,917	27,209
12 years .....	1,205,763	966,692	207,894	997,757	830,776	140,691
13 years .....	217,712	180,072	32,727	145,387	125,568	15,979
14 years .....	237,556	194,849	35,809	226,030	195,105	24,180
15 years .....	87,007	71,085	13,073	79,499	67,398	9,632
16 years .....	301,408	266,562	24,036	325,637	295,068	20,278
17 years or more .....	142,077	126,033	9,294	241,670	219,561	10,388
Not stated .....	40,940	30,621	7,497	439,219	207,482	216,856

<sup>1</sup>Includes races other than white and black.

NOTE: Excludes data for California, Texas, and Washington, which did not require reporting of educational attainment of mother and father.

Table 21. Live births by educational attainment of mother, age of mother, and race of child: Total of 47 reporting States and the District of Columbia, 1983

[Based on 100 percent of births in selected States and on a 50-percent sample of births in all other States; see Technical notes]

Age of mother and race of child	Total	Years of school completed by mother					
		0-8 years	9-11 years	12 years	13-15 years	16 years or more	Not stated
All races <sup>1</sup> . . . . .	2,838,861	107,031	499,367	1,205,763	542,275	443,485	40,940
Under 15 years . . . . .	7,710	5,669	1,808	-	-	-	233
15-19 years . . . . .	384,517	28,527	203,735	133,267	12,951	114	5,923
15 years . . . . .	19,370	5,803	13,069	165	-	-	333
16 years . . . . .	43,215	5,505	35,972	954	17	-	767
17 years . . . . .	73,333	5,279	55,110	11,676	163	-	1,105
18 years . . . . .	107,674	5,797	51,488	46,524	2,180	-	1,685
19 years . . . . .	140,925	6,143	48,096	73,948	10,591	114	2,033
20-24 years . . . . .	903,063	29,019	174,339	482,950	166,999	37,496	12,260
25-29 years . . . . .	899,661	21,329	77,557	382,620	220,056	185,647	12,452
30-34 years . . . . .	486,428	13,307	28,601	155,554	112,004	169,737	7,225
35-39 years . . . . .	137,149	7,032	10,727	44,083	26,941	45,935	2,431
40 years and over . . . . .	20,333	2,148	2,600	7,289	3,324	4,556	416
White . . . . .	2,250,297	76,519	337,864	966,692	446,006	392,595	30,621
Under 15 years . . . . .	2,705	2,049	552	-	-	-	104
15-19 years . . . . .	255,692	20,907	130,830	91,687	8,291	77	3,900
15 years . . . . .	9,465	3,258	5,946	78	-	-	183
16 years . . . . .	24,840	3,778	20,037	565	12	-	448
17 years . . . . .	47,085	4,157	34,945	7,182	102	-	699
18 years . . . . .	73,362	4,733	35,203	30,957	1,325	-	1,144
19 years . . . . .	100,940	4,981	34,699	52,905	6,852	77	1,426
20-24 years . . . . .	705,380	22,784	126,231	385,968	130,063	31,348	8,986
25-29 years . . . . .	751,147	15,294	53,655	321,267	186,740	164,429	9,762
30-34 years . . . . .	408,133	9,117	18,178	126,947	95,690	152,510	5,691
35-39 years . . . . .	111,680	4,913	6,841	35,148	22,509	40,387	1,882
40 years and over . . . . .	15,560	1,455	1,577	5,675	2,713	3,844	296
Black . . . . .	498,192	22,455	145,407	207,894	81,609	33,330	7,497
Under 15 years . . . . .	4,819	3,486	1,218	-	-	-	115
15-19 years . . . . .	118,351	6,625	67,454	38,224	4,329	32	1,687
15 years . . . . .	9,425	2,400	6,812	81	-	-	132
16 years . . . . .	17,197	1,568	14,988	373	4	-	264
17 years . . . . .	24,285	931	18,762	4,200	56	-	336
18 years . . . . .	31,407	846	14,847	14,454	807	-	453
19 years . . . . .	36,037	880	12,045	19,116	3,462	32	502
20-24 years . . . . .	171,929	4,021	42,540	85,414	32,629	4,893	2,432
25-29 years . . . . .	120,484	3,694	20,886	51,823	27,835	14,413	1,833
30-34 years . . . . .	59,695	2,716	8,998	23,696	12,866	10,409	1,010
35-39 years . . . . .	19,235	1,456	3,395	7,376	3,459	3,190	359
40 years and over . . . . .	3,679	457	916	1,361	491	393	61

<sup>1</sup>Includes races other than white and black.

NOTE: Excludes data for California, Texas, and Washington, which did not require reporting of educational attainment of mother.

**Table 22. Live births by age of mother and specified race of child: United States, 1983**

[Based on 100 percent of births in 46 States and on a 50-percent sample of births in 4 States and the District of Columbia; see Technical notes]

Age of mother	All races <sup>1</sup>	White	Black	American Indian <sup>2</sup>	Asian or Pacific Islander				
					Chinese	Japanese	Hawaiian	Filipino	Other
All ages . . . . .	3,638,933	2,904,250	586,027	41,571	14,354	8,672	7,315	17,676	57,417
Under 15 years . . . . .	9,752	4,031	5,439	160	3	3	9	16	84
15-19 years . . . . .	489,286	338,152	136,666	8,468	164	269	1,202	1,090	3,100
15 years . . . . .	24,686	13,368	10,678	409	7	8	54	36	113
16 years . . . . .	55,000	33,811	19,642	1,036	11	15	111	105	245
17 years . . . . .	92,987	62,462	27,840	1,667	33	39	215	193	511
18 years . . . . .	136,921	96,464	36,443	2,321	32	93	345	310	860
19 years . . . . .	179,692	132,047	42,063	3,035	81	114	477	446	1,371
20-24 years . . . . .	1,160,274	917,533	203,062	15,431	1,709	1,410	2,718	3,884	14,011
25-29 years . . . . .	1,147,720	956,098	143,584	10,391	5,606	3,175	2,021	5,888	20,416
30-34 years . . . . .	624,516	520,547	70,682	5,062	5,365	2,854	1,020	4,533	14,161
35-39 years . . . . .	180,353	146,973	22,390	1,718	1,370	885	304	1,941	4,675
40-44 years . . . . .	25,882	20,114	4,006	326	130	74	40	312	857
45-49 years . . . . .	1,150	802	198	15	7	2	1	12	113

<sup>1</sup>Includes births of other races not shown separately.

<sup>2</sup>Includes births to Aleuts and Eskimos.

**Table 23. Live births by birth weight and number and percent low birth weight, by specified race of child: United States, 1983**

[Based on 100 percent of births in 46 States and on a 50-percent sample of births in 4 States and the District of Columbia; see Technical notes]

Birth weight <sup>1</sup>	All races <sup>2</sup>	White	Black	American Indian <sup>3</sup>	Asian or Pacific Islander				
					Chinese	Japanese	Hawaiian	Filipino	Other
Number									
Total . . . . .	3,638,933	2,904,250	586,027	41,571	14,354	8,672	7,315	17,676	57,417
Less than 2,500 grams . . . . .	247,668	164,366	73,658	2,668	712	502	530	1,293	3,821
Less than 500 grams . . . . .	4,368	2,521	1,729	39	7	5	7	12	40
500-999 grams . . . . .	16,572	10,050	6,016	170	43	22	30	44	186
1,000-1,499 grams . . . . .	22,221	14,301	7,160	232	55	33	55	117	257
1,500-1,999 grams . . . . .	47,309	31,281	14,384	513	120	78	97	227	587
2,000-2,499 grams . . . . .	157,198	106,213	44,369	1,714	487	364	341	893	2,751
2,500-2,999 grams . . . . .	586,801	416,750	140,874	6,322	2,897	1,801	1,421	3,913	12,529
3,000-3,499 grams . . . . .	1,341,162	1,055,867	224,316	15,314	6,407	3,728	2,858	7,442	24,540
3,500-3,999 grams . . . . .	1,062,902	909,569	116,112	12,320	3,514	2,072	1,870	4,005	13,025
4,000-4,499 grams . . . . .	326,601	291,733	25,348	3,939	706	484	500	842	2,936
4,500-4,999 grams . . . . .	60,324	54,700	3,987	781	85	75	107	148	425
5,000 grams or more . . . . .	8,131	7,142	726	131	17	2	16	24	73
Not stated . . . . .	5,344	4,123	1,006	96	16	8	13	9	68
Percent									
Less than 2,500 grams . . . . .	6.8	5.7	12.6	6.4	5.0	5.8	7.3	7.3	6.7

<sup>1</sup>Equivalents of the gram weights in pounds and ounces are shown in table 15.

<sup>2</sup>Includes births of other races not shown separately.

<sup>3</sup>Includes births to Aleuts and Eskimos.

Table 24. Live births by month of pregnancy prenatal care began, age of mother, and race of child: United States, 1983

[Based on 100 percent of births in 46 States and on a 50-percent sample of births in 4 States and the District of Columbia; see Technical notes]

Age of mother and race of child	Total	Month of pregnancy prenatal care began					
		1st and 2d month	3d month	4th-6th month	7th-9th month	No prenatal care	Not stated
All races <sup>1</sup>							
All ages	3,638,933	1,884,976	829,916	650,600	140,460	57,849	75,132
Under 15 years	9,752	1,631	1,541	4,148	1,421	624	387
15-19 years	489,286	143,655	114,378	163,596	39,499	15,417	12,741
15 years	24,686	5,134	4,974	9,966	2,738	1,117	757
16 years	55,000	12,873	11,919	21,190	5,340	2,120	1,558
17 years	92,987	24,406	21,450	33,436	8,060	3,164	2,471
18 years	136,921	39,882	32,476	45,838	10,946	4,231	3,548
19 years	179,692	61,360	43,559	53,166	12,415	4,785	4,407
20-24 years	1,160,274	552,538	275,214	234,717	51,980	21,049	24,776
25-29 years	1,147,720	686,136	255,052	145,647	27,818	11,775	21,292
30-34 years	624,516	386,168	136,670	71,315	13,118	5,749	11,496
35-39 years	180,353	102,788	40,757	25,356	5,145	2,531	3,776
40 years and over	27,032	12,060	6,304	5,821	1,479	704	664
White							
All ages	2,904,250	1,597,231	665,102	455,787	94,621	36,745	54,764
Under 15 years	4,031	705	660	1,583	601	305	177
15-19 years	338,152	105,717	82,849	106,785	25,279	9,292	8,230
15 years	13,368	2,953	2,868	5,109	1,472	576	390
16 years	33,811	8,418	7,720	12,449	3,122	1,203	899
17 years	62,462	17,065	15,088	21,663	5,169	1,918	1,559
18 years	96,464	29,483	23,904	30,928	7,161	2,605	2,383
19 years	132,047	47,798	33,269	36,636	8,355	2,990	2,999
20-24 years	917,533	463,427	220,062	166,784	35,679	13,668	17,913
25-29 years	956,098	596,421	210,896	105,700	19,282	7,569	16,230
30-34 years	520,547	333,956	112,863	52,079	9,070	3,678	8,901
35-39 years	146,973	87,233	32,872	18,646	3,656	1,728	2,838
40 years and over	20,916	9,772	4,900	4,210	1,054	505	475
Black							
All ages	586,027	219,350	131,538	163,964	36,824	18,637	15,714
Under 15 years	5,439	886	843	2,450	765	303	192
15-19 years	136,666	34,109	28,489	51,840	12,589	5,669	3,970
15 years	10,678	2,078	1,982	4,591	1,179	501	347
16 years	19,642	4,114	3,930	8,156	1,998	851	593
17 years	27,840	6,705	5,770	10,793	2,579	1,171	822
18 years	36,443	9,325	7,708	13,549	3,335	1,509	1,017
19 years	42,063	11,887	9,099	14,751	3,498	1,637	1,191
20-24 years	203,062	73,304	46,225	58,100	13,350	6,588	5,495
25-29 years	143,584	65,453	33,346	31,452	6,148	3,557	3,628
30-34 years	70,682	34,259	16,239	14,075	2,660	1,707	1,742
35-39 years	22,390	9,850	5,419	4,866	1,018	658	579
40 years and over	4,204	1,489	977	1,181	294	155	108

<sup>1</sup>Includes races other than white and black.

**Table 25. Live births by month of pregnancy prenatal care began, number of prenatal visits, and race of child: Total of 49 reporting States and the District of Columbia, 1983**

[Based on 100 percent of births in selected States and on a 50-percent sample of births in all other States; see Technical notes]

Number of prenatal visits and race of child	Month of pregnancy prenatal care began						
	All births	1st and 2d month	3d month	4th-6th month	7th-9th month	No prenatal care	Not stated
<b>All races<sup>1</sup></b>							
Total .....	3,202,790	1,653,283	732,807	573,112	124,641	53,310	65,637
No visits .....	53,310	...	...	...	...	53,310	...
1-2 visits .....	58,735	7,015	4,957	15,523	29,767	...	1,473
3-4 visits .....	105,568	12,254	11,986	45,630	34,406	...	1,292
5-6 visits .....	205,234	38,172	40,408	95,534	29,319	...	1,801
7-8 visits .....	346,750	107,403	89,739	130,884	16,709	...	2,015
9-10 visits .....	658,178	301,317	198,032	148,184	7,765	...	2,880
11-12 visits .....	875,129	566,596	222,316	80,915	2,817	...	2,485
13-14 visits .....	452,689	330,001	93,028	27,595	932	...	1,133
15-16 visits .....	241,926	182,434	43,848	14,440	539	...	665
17-18 visits .....	53,313	39,826	10,008	3,213	106	...	160
19 visits or more .....	64,192	48,199	10,936	4,578	181	...	298
Not stated .....	87,766	20,066	7,549	6,616	2,100	...	51,435
<b>White</b>							
Total .....	2,559,866	1,411,516	588,941	396,202	82,325	33,049	47,833
No visits .....	33,049	...	...	...	...	33,049	...
1-2 visits .....	34,744	4,459	2,902	8,378	18,211	...	794
3-4 visits .....	63,958	7,528	7,248	26,234	22,148	...	800
5-6 visits .....	136,927	26,858	27,336	61,647	19,935	...	1,151
7-8 visits .....	256,679	84,386	68,241	90,822	11,813	...	1,417
9-10 visits .....	526,371	252,410	159,344	106,966	5,526	...	2,125
11-12 visits .....	748,563	496,083	187,186	61,186	2,067	...	2,041
13-14 visits .....	391,405	290,522	78,354	20,928	684	...	917
15-16 visits .....	206,070	158,441	36,271	10,415	394	...	549
17-18 visits .....	44,865	34,186	8,124	2,346	79	...	130
19 visits or more .....	52,046	40,363	8,325	3,008	115	...	235
Not stated .....	65,189	16,280	5,610	4,272	1,353	...	37,674
<b>Black</b>							
Total .....	541,231	197,990	121,069	154,085	35,122	18,183	14,782
No visits .....	18,183	...	...	...	...	18,183	...
1-2 visits .....	20,857	2,311	1,828	6,408	9,724	...	586
3-4 visits .....	36,020	4,134	4,187	17,175	10,140	...	384
5-6 visits .....	58,984	9,768	11,396	29,572	7,733	...	515
7-8 visits .....	76,735	19,348	18,252	34,662	4,000	...	473
9-10 visits .....	110,872	40,187	32,543	35,698	1,850	...	594
11-12 visits .....	103,034	56,342	28,825	16,893	632	...	342
13-14 visits .....	49,128	31,071	11,902	5,779	219	...	157
15-16 visits .....	30,283	20,007	6,487	3,578	115	...	96
17-18 visits .....	7,203	4,774	1,607	771	25	...	26
19 visits or more .....	10,709	6,819	2,342	1,442	56	...	50
Not stated .....	19,223	3,229	1,700	2,107	628	...	11,559

<sup>1</sup>Includes races other than white and black.

NOTE: Excludes data for California, which did not require reporting of number of prenatal visits.

Table 26. Live births by period of gestation, birth weight, and race of child: Total of 49 reporting States and the District of Columbia, 1983

(Based on 100 percent of births in selected States and on a 50-percent sample of births in all other States; see Technical notes)

Birth weight <sup>1</sup> and race of child	Period of gestation									
	All births	Under 28 weeks	28-31 weeks	32-35 weeks	36 weeks	37-39 weeks	40 weeks	41 weeks	42 weeks and over	Not stated
All races <sup>2</sup>										
Total . . . . .	3,611,316	26,011	38,582	160,290	109,600	1,318,015	770,218	538,014	520,582	130,004
Under 500 grams . . . . .	4,348	3,326	148	64	14	69	23	57	44	603
500-999 grams . . . . .	16,473	10,151	2,802	795	102	384	172	167	218	1,682
1,000-1,499 grams . . . . .	22,064	3,339	9,985	4,430	559	1,080	264	216	384	1,807
1,500-1,999 grams . . . . .	46,939	1,347	8,739	19,750	3,403	7,255	1,238	852	1,268	3,087
2,000-2,499 grams . . . . .	155,770	1,300	4,136	41,042	18,084	54,534	12,593	7,207	9,301	7,573
2,500-2,999 grams . . . . .	580,881	1,878	4,606	40,797	38,058	272,712	90,507	51,109	58,261	22,953
3,000-3,499 grams . . . . .	1,330,156	2,392	4,808	33,549	32,688	555,339	295,326	183,494	177,740	44,820
3,500-3,999 grams . . . . .	1,056,246	1,268	2,465	15,637	13,017	335,960	271,281	201,163	182,094	33,361
4,000-4,499 grams . . . . .	325,133	323	600	3,309	3,022	76,937	82,939	75,979	72,052	9,972
4,500-4,999 grams . . . . .	60,092	45	93	539	465	11,328	13,788	15,517	16,386	1,931
5,000 grams or over . . . . .	8,086	63	27	104	82	1,529	1,598	1,907	2,462	314
Not stated . . . . .	5,128	579	173	274	106	888	489	346	372	1,901
White										
Total . . . . .	2,881,296	14,931	23,754	106,455	78,176	1,029,126	640,889	458,150	431,573	98,242
Under 500 grams . . . . .	2,505	1,924	88	31	7	39	20	31	35	330
500-999 grams . . . . .	9,969	6,165	1,752	475	58	201	85	103	123	1,007
1,000-1,499 grams . . . . .	14,166	1,946	6,579	2,905	375	688	147	159	238	1,129
1,500-1,999 grams . . . . .	30,972	666	5,815	13,253	2,259	4,804	848	567	798	1,962
2,000-2,499 grams . . . . .	105,025	616	2,255	28,334	12,371	36,644	8,737	4,993	6,168	4,907
2,500-2,999 grams . . . . .	411,824	918	2,337	26,537	27,097	193,064	66,641	37,993	41,882	15,355
3,000-3,499 grams . . . . .	1,046,803	1,256	2,648	21,064	23,274	433,029	239,130	151,092	141,758	33,552
3,500-3,999 grams . . . . .	904,003	838	1,632	10,687	9,792	281,761	236,299	177,590	157,736	27,668
4,000-4,499 grams . . . . .	290,480	223	456	2,460	2,425	67,050	74,696	69,235	65,207	8,728
4,500-4,999 grams . . . . .	54,511	34	72	450	378	9,888	12,499	14,349	15,110	1,731
5,000 grams or over . . . . .	7,102	39	17	69	63	1,283	1,385	1,744	2,244	258
Not stated . . . . .	3,936	306	103	190	77	675	402	294	274	1,615
Black										
Total . . . . .	585,310	10,323	13,497	46,999	26,623	230,034	100,641	62,133	71,221	23,839
Under 500 grams . . . . .	1,725	1,311	60	30	5	28	3	26	7	255
500-999 grams . . . . .	6,006	3,697	974	300	34	171	72	63	81	614
1,000-1,499 grams . . . . .	7,155	1,299	3,085	1,375	154	344	110	55	125	608
1,500-1,999 grams . . . . .	14,370	645	2,637	5,862	1,004	2,182	358	257	423	1,002
2,000-2,499 grams . . . . .	44,313	654	1,733	11,203	4,942	15,488	3,356	1,932	2,772	2,233
2,500-2,999 grams . . . . .	140,710	908	2,078	12,447	9,321	65,525	19,705	10,796	13,994	5,936
3,000-3,499 grams . . . . .	224,025	1,063	1,965	10,788	7,921	96,117	43,636	25,326	29,110	8,099
3,500-3,999 grams . . . . .	115,970	379	755	4,136	2,664	41,359	26,256	17,813	18,718	3,890
4,000-4,499 grams . . . . .	25,326	81	123	687	467	7,432	5,964	4,871	4,896	805
4,500-4,999 grams . . . . .	3,986	9	18	71	73	1,022	966	827	874	126
5,000 grams or over . . . . .	725	22	9	25	16	189	143	129	146	46
Not stated . . . . .	999	255	60	75	22	177	72	38	75	225

<sup>1</sup>Equivalents of the gram weights in pounds and ounces are shown in table 15.<sup>2</sup>Includes races other than white and black.

NOTE: Excludes data for New Mexico, which did not require reporting of first day of last normal menstrual period.



Table 27. Live births by 1- and 5-minute Apgar scores and race of child: Total of 46 reporting States and the District of Columbia, 1983

[Based on 100 percent of births in selected States and on a 50-percent sample of births in all other States; see Technical notes]

1-minute score and race of child	Total	5-minute score										Not stated	
		0	1	2	3	4	5	6	7	8	9		10
All races <sup>1</sup> . . . . .	2,841,409	1,885	6,656	4,149	4,221	5,828	10,868	22,579	56,392	242,935	1,740,849	690,269	54,778
0 . . . . .	1,978	652	362	241	179	133	128	67	73	40	54	24	25
1 . . . . .	19,737	732	4,772	1,505	1,647	1,687	2,116	2,222	1,855	1,581	1,251	76	293
2 . . . . .	20,345	147	830	1,637	1,029	1,648	2,461	3,337	3,409	3,089	2,334	176	248
3 . . . . .	25,321	37	237	280	732	1,010	2,525	4,340	5,631	5,776	4,313	266	174
4 . . . . .	36,420	16	87	129	161	573	1,628	5,056	8,491	10,650	8,875	579	175
5 . . . . .	60,475	9	58	92	119	199	938	4,179	13,252	20,637	19,396	1,393	203
6 . . . . .	112,609	15	33	42	90	152	311	2,065	13,789	45,177	47,048	3,644	243
7 . . . . .	294,454	35	61	67	96	152	329	548	7,318	88,148	183,898	13,412	390
8 . . . . .	1,017,291	108	70	84	95	169	257	499	1,776	64,910	861,728	86,654	941
9 . . . . .	1,139,981	121	93	33	43	67	133	202	652	2,510	610,410	524,635	1,082
10 . . . . .	59,826	9	5	-	3	3	13	5	21	69	525	58,886	287
Not stated . . . . .	52,972	4	48	39	27	35	29	59	125	348	1,017	524	50,717
White . . . . .	2,258,723	1,220	4,133	2,703	2,761	3,964	7,523	16,274	42,519	191,559	1,378,833	563,424	43,810
0 . . . . .	1,323	405	238	176	117	100	92	44	49	26	36	21	19
1 . . . . .	12,907	491	2,908	973	1,065	1,088	1,418	1,486	1,234	1,119	860	61	204
2 . . . . .	14,142	90	510	1,046	699	1,138	1,708	2,348	2,423	2,195	1,686	139	160
3 . . . . .	18,056	21	157	177	460	721	1,753	3,074	4,013	4,176	3,164	219	121
4 . . . . .	27,139	10	59	93	110	376	1,148	3,732	6,318	7,984	6,719	462	128
5 . . . . .	46,349	4	40	65	76	139	670	3,096	10,039	15,825	15,100	1,152	143
6 . . . . .	89,284	6	19	27	61	102	206	1,554	10,863	35,520	37,751	2,998	177
7 . . . . .	237,816	24	41	43	71	105	230	391	5,613	70,034	149,621	11,347	296
8 . . . . .	821,032	77	52	56	52	117	177	370	1,376	52,359	691,787	73,890	719
9 . . . . .	900,128	86	69	21	30	50	91	138	496	2,010	470,873	425,411	853
10 . . . . .	48,116	4	4	-	1	3	8	3	14	55	461	47,335	228
Not stated . . . . .	42,431	2	36	26	19	25	22	38	81	256	775	389	40,762
Black . . . . .	493,490	604	2,345	1,349	1,333	1,710	3,034	5,708	12,380	44,033	303,401	108,304	9,289
0 . . . . .	585	224	109	60	53	31	32	18	23	13	14	3	5
1 . . . . .	6,205	225	1,754	494	516	538	621	679	544	412	327	14	81
2 . . . . .	5,579	53	290	557	308	460	691	884	874	782	564	32	84
3 . . . . .	6,542	15	71	94	259	276	706	1,161	1,450	1,424	996	41	49
4 . . . . .	8,238	6	26	34	46	186	434	1,189	1,966	2,359	1,855	94	43
5 . . . . .	12,438	5	16	24	42	56	250	990	2,866	4,251	3,683	204	51
6 . . . . .	20,113	9	13	15	27	48	96	455	2,604	8,360	7,872	552	62
7 . . . . .	47,657	8	18	23	23	41	89	142	1,520	15,432	28,543	1,730	88
8 . . . . .	161,199	27	16	26	37	50	67	113	351	10,462	139,310	10,558	182
9 . . . . .	205,583	26	20	10	13	16	37	57	136	444	119,983	84,642	199
10 . . . . .	10,441	4	1	-	2	-	5	2	7	11	44	10,315	50
Not stated . . . . .	8,910	2	11	12	7	8	6	18	39	83	210	119	8,395

<sup>1</sup>Includes races other than white and black.

NOTE: Excludes data for California, Delaware, Oklahoma, and Texas, which did not require reporting of both 1- and 5-minute Apgar scores.

**Table 28. Live births by 5-minute Apgar score, age of mother, and race of child: Total of 46 reporting States and the District of Columbia, 1983**  
 [Based on 100 percent of births in selected States and on a 50-percent sample of births in all other States; see Technical notes]

Age of mother and race of child	Total	5-minute score										Not stated	
		0	1	2	3	4	5	6	7	8	9		10
<b>All races<sup>1</sup></b>													
All ages . . . . .	2,841,409	1,885	6,656	4,149	4,221	5,828	10,868	22,579	56,392	242,935	1,740,849	690,269	54,778
Under 15 years. . .	7,613	10	53	31	19	19	59	122	268	784	4,475	1,553	220
15-19 years . . . .	380,503	321	1,161	743	720	1,054	2,029	4,144	9,807	36,680	230,040	85,895	7,909
15 years . . . . .	19,092	23	72	46	41	62	117	259	592	1,894	11,450	4,081	455
16 years . . . . .	42,711	49	145	112	97	139	238	496	1,256	4,144	25,760	9,340	935
17 years . . . . .	72,538	68	231	134	151	202	421	824	1,916	7,166	43,802	16,115	1,508
18 years . . . . .	106,500	73	331	178	204	291	577	1,157	2,685	10,220	64,082	24,480	2,222
19 years . . . . .	139,662	108	382	273	227	360	676	1,408	3,358	13,256	84,946	31,879	2,789
20-24 years . . . .	900,335	570	2,069	1,348	1,378	1,826	3,543	7,280	18,301	79,300	552,164	214,830	17,726
25-29 years . . . .	903,357	533	1,827	1,125	1,180	1,612	2,940	6,258	16,023	73,416	556,850	224,907	16,686
30-34 years . . . .	490,526	306	1,132	658	657	923	1,626	3,398	8,645	39,361	301,870	123,113	8,837
35-39 years . . . .	138,613	119	360	202	210	325	549	1,167	2,812	11,526	83,582	34,864	2,897
40-44 years . . . .	19,594	26	48	39	54	66	115	200	508	1,774	11,401	4,883	480
45-49 years . . . .	868	-	6	3	3	3	7	10	28	94	467	224	23
<b>White</b>													
All ages . . . . .	2,258,723	1,220	4,133	2,703	2,761	3,964	7,523	16,274	42,519	191,559	1,378,833	563,424	43,810
Under 15 years. . .	2,668	2	15	10	7	1	16	38	97	288	1,509	591	94
15-19 years . . . .	253,924	165	624	416	390	617	1,235	2,609	6,391	24,990	151,272	59,738	5,477
15 years . . . . .	9,370	6	24	20	21	20	56	120	261	981	5,533	2,087	241
16 years . . . . .	24,669	23	66	50	44	66	125	279	758	2,507	14,550	5,630	571
17 years . . . . .	46,741	35	128	78	77	111	237	498	1,227	4,775	27,668	10,894	1,013
18 years . . . . .	72,795	47	190	101	118	178	372	758	1,770	7,101	43,180	17,393	1,587
19 years . . . . .	100,349	54	216	167	130	242	445	954	2,375	9,626	60,341	23,734	2,065
20-24 years . . . .	705,431	373	1,234	868	888	1,262	2,411	5,185	13,756	61,921	430,112	173,360	14,061
25-29 years . . . .	755,659	378	1,190	773	826	1,163	2,195	4,831	12,864	60,901	464,721	191,826	13,991
30-34 years . . . .	412,266	200	787	456	468	654	1,211	2,576	6,872	32,767	253,892	104,984	7,399
35-39 years . . . .	113,089	80	245	144	141	217	386	884	2,163	9,270	68,251	28,915	2,393
40-44 years . . . .	15,079	22	34	33	40	47	67	145	362	1,351	8,752	3,850	376
45-49 years . . . .	607	-	4	3	1	3	2	6	14	71	324	160	19
<b>Black</b>													
All ages . . . . .	493,490	604	2,345	1,349	1,333	1,710	3,034	5,708	12,380	44,033	303,401	108,304	9,289
Under 15 years. . .	4,761	8	36	21	12	16	43	81	164	477	2,843	940	120
15-19 years . . . .	116,869	148	520	311	314	419	743	1,448	3,217	10,765	72,292	24,485	2,207
15 years . . . . .	9,282	16	48	25	20	40	61	133	320	869	5,626	1,924	200
16 years . . . . .	16,985	25	76	62	48	69	106	207	476	1,536	10,490	3,553	337
17 years . . . . .	23,989	33	100	53	72	89	171	307	654	2,209	14,928	4,916	457
18 years . . . . .	31,014	25	137	74	81	108	197	381	852	2,856	19,124	6,605	574
19 years . . . . .	35,599	49	159	97	93	113	208	420	915	3,295	22,124	7,487	639
20-24 years . . . .	170,083	184	789	456	451	532	1,047	1,914	4,119	15,178	105,579	36,711	3,123
25-29 years . . . .	119,607	137	577	330	311	403	655	1,272	2,764	10,294	73,700	26,945	2,219
30-34 years . . . .	59,365	88	308	176	170	229	367	695	1,460	5,208	35,670	13,863	1,131
35-39 years . . . .	19,140	36	103	50	62	96	133	249	528	1,759	11,225	4,497	402
40-44 years . . . .	3,491	3	12	5	11	15	44	47	116	338	2,002	813	85
45-49 years . . . .	174	-	-	-	2	-	2	2	12	14	90	50	2

<sup>1</sup>Includes races other than white and black.

NOTE: Excludes data for California, Delaware, Oklahoma, and Texas, which did not require reporting of 5-minute Apgar scores.

## Technical notes

### Sources of data

Data shown in this report are based on 100 percent of the birth certificates of 46 States that provided data through the Vital Statistics Cooperative Program. These States accounted for 84 percent of all births in the United States in 1983. Data from the remaining areas (Arizona, California, Delaware, the District of Columbia, and Georgia) are based on a 50-percent sample of birth certificates filed in those areas.

Many of the topics discussed in this brief report are covered in more analytical detail in other reports published by the National Center for Health Statistics. Topics of reports issued within the past 3 years include first births to older mothers,<sup>1</sup> Asian births,<sup>5</sup> teenage childbearing,<sup>8</sup> and midwife-attended births.<sup>9</sup> Also available are methodological reports on imputing length of gestation<sup>6</sup> and on evaluating inferred birth statistics for unmarried women in California,<sup>10</sup> three brief reports on births of Hispanic parentage,<sup>11-13</sup> and a report presenting birth and fertility rates by State for 1980.<sup>14</sup>

### Population denominators

Birth and fertility rates for 1983 are based on populations estimated as of July 1, 1983.<sup>15</sup> The estimates are based on the 1980 census count. The 1980 census counts by race were modified to be consistent with Office of Management and Budget categories and historical categories for birth data. The modification procedures are discussed in detail in a U.S. Bureau of the Census report.<sup>16</sup>

NOTE: A list of references follows the text.

### Births by marital status of mother

Beginning with 1980 data, national estimates of births to unmarried women are derived from two sources. For 41 States and the District of Columbia, marital status is reported directly on the birth certificate; for the remaining 9 States, which lack such an item, marital status is inferred from a comparison of the child's and parents' surnames. This procedure represents a substantial departure from the method used prior to 1980 to prepare national estimates of births to unmarried women. The previous method assumed that the incidence of births to unmarried women in States with no direct question on marital status was the same as the incidence in reporting States in the same geographic division.

The new method represents an attempt to use related information on the birth certificate to improve the quality of national data on this topic as well as to provide data for the individual nonreporting States. The method is based on a comparison of the child's surname, the mother's present and maiden surnames, and the father's surname. An evaluation study of the new method and its continuing validity for California (the largest nonreporting State) has been published.<sup>10</sup>

### Computation of percent distributions and medians

Births of unknown live-birth order, attendant at birth, educational attainment of mother, date of last live birth, month of pregnancy prenatal care began, number of prenatal visits, and birth weight were subtracted from figures for total births used as denominators before percent distributions and medians were computed. In the case of birth intervals, the percent distributions exclude the second or later born child in a multiple delivery (interval of 0 months). Percent distributions of the number of prenatal visits also exclude births to mothers who had no prenatal care. Computations of the median number of prenatal visits were based on tabulations of ungrouped data.

This report presents summary tabulations from the final natality statistics for 1983. More detailed tabulations for 1983 will be published in *Vital Statistics of the United States, Volume I—Natality*. Prior to the publication of that volume, the National Center for Health Statistics will respond to requests for unpublished data whenever possible.

---

**Symbols**

- - - Data not available
  - . . . Category not applicable
  - Quantity zero
  - 0.0 Quantity more than zero but less than 0.05
  - Z Quantity more than zero but less than 500 where numbers are rounded to thousands
  - \* Figure does not meet standards of reliability or precision
- 

---

**Suggested Citation**

National Center for Health Statistics: Advance report of final natality statistics, 1983. *Monthly Vital Statistics Report*. Vol. 34, No. 6 Supp. DHHS Pub. No. (PHS) 85-1120. Public Health Service. Hyattsville, Md., Sept. 20, 1985.

---

**Copyright Information**

This report may be reprinted without further permission.

---

U.S. DEPARTMENT OF HEALTH AND HUMAN SERVICES  
Public Health Service  
National Center for Health Statistics  
3700 East-West Highway  
Hyattsville, Maryland 20782

FIRST CLASS MAIL  
POSTAGE & FEES PAID  
PHS/NCHS  
PERMIT No. G-281

---

OFFICIAL BUSINESS  
PENALTY FOR PRIVATE USE, \$300

---

To receive this publication regularly, contact the National Center for Health Statistics by calling 301 436-8500

---