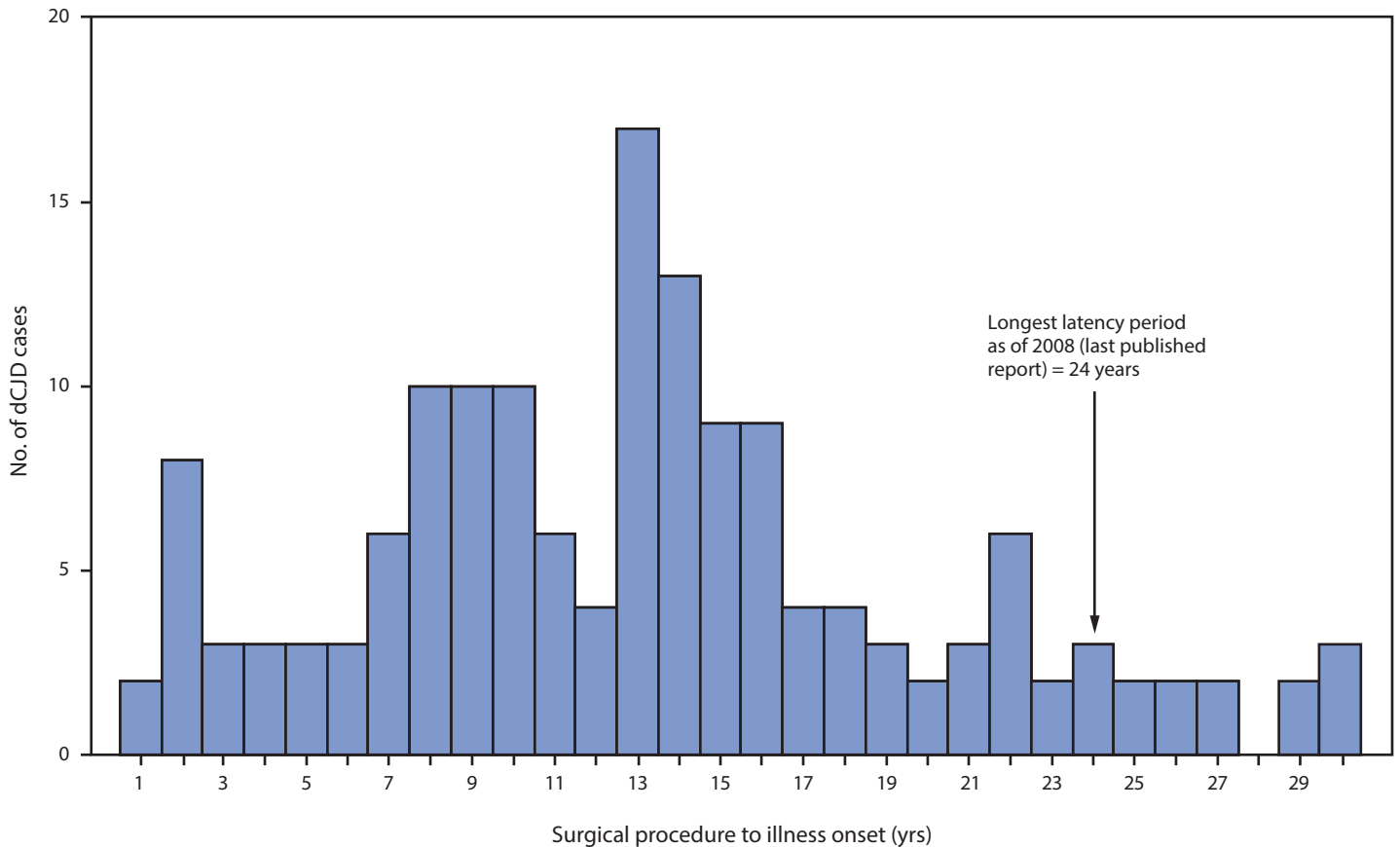


## Errata

### Vol. 67, No. 9

In the report “Update: Dura Mater Graft–Associated Creutzfeldt-Jakob Disease — Japan, 1975–2017,” on page 276, an error occurred in Figure 3. The corrected figure is as follows:



### Vol. 67, No. 7

In the report “HIV Diagnoses Among Persons Aged 13–29 Years — United States, 2010–2014,” on page 212, the second footnote for Table 1 should have read “<sup>†</sup> Rates are **single-year rates** per 100,000 population. **Rates for 2010–2014 are comparable to single-year rates and are calculated as number of diagnoses during 2010–2014 divided by number of person-years at risk for diagnosis during 2010–2014 (x 100,000).**” On page 213, the third footnote for Table 2 should have read “<sup>§</sup> Rates are **5-year cumulative rates** per 100,000 population. Rates are not calculated by transmission category because of the lack of denominator data.”