

Notifiable Diseases and Mortality Tables

TABLE I. Provisional cases of infrequently reported notifiable diseases (<1,000 cases reported during the preceding year) — United States, week ending December 27, 2014 (52nd week)* (Export data)

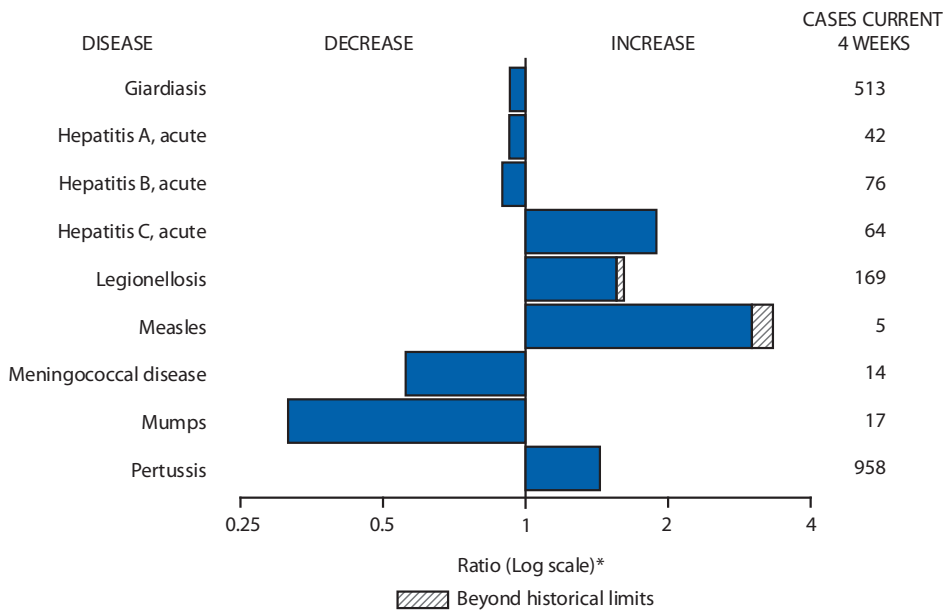
| Disease | Current week | Cum 2014 | 5-year weekly average [†] | Total cases reported for previous years | | | | | States reporting cases during current week (No.) |
|--|--------------|----------|------------------------------------|---|-------|------|------|--------|--|
| | | | | 2013 | 2012 | 2011 | 2010 | 2009 | |
| Anthrax | — | — | — | — | — | 1 | — | 1 | |
| Arboviral diseases ^{§, ¶} : | | | | | | | | | |
| California serogroup virus disease | — | 79 | 0 | 95 | 81 | 137 | 75 | 55 | |
| Eastern equine encephalitis virus disease | — | 8 | 0 | 8 | 15 | 4 | 10 | 4 | |
| Powassan virus disease | — | 8 | 0 | 12 | 7 | 16 | 8 | 6 | |
| St. Louis encephalitis virus disease | — | 8 | 0 | 1 | 3 | 6 | 10 | 12 | |
| Western equine encephalitis virus disease | — | — | — | — | — | — | — | — | |
| Botulism, total | — | 133 | 3 | 152 | 168 | 153 | 112 | 118 | |
| foodborne | — | 10 | 0 | 4 | 27 | 24 | 7 | 10 | |
| infant | — | 105 | 3 | 136 | 123 | 97 | 80 | 83 | |
| other (wound and unspecified) | — | 18 | 0 | 12 | 18 | 32 | 25 | 25 | |
| Brucellosis | — | 82 | 2 | 99 | 114 | 79 | 115 | 115 | |
| Chancroid | 1 | 18 | 1 | 10 | 15 | 8 | 24 | 28 | DE (1) |
| Cholera | — | — | 1 | 14 | 17 | 40 | 13 | 10 | |
| Cyclosporiasis [§] | — | 364 | 3 | 784 | 123 | 151 | 179 | 141 | |
| Diphtheria | — | 1 | — | — | 1 | — | — | — | |
| <i>Haemophilus influenzae</i> ,** invasive disease (age <5 yrs): | | | | | | | | | |
| serotype b | — | 26 | 1 | 31 | 30 | 14 | 23 | 35 | |
| nonserotype b | — | 158 | 5 | 222 | 205 | 145 | 200 | 236 | |
| unknown serotype | 1 | 218 | 6 | 185 | 210 | 226 | 223 | 178 | PA (1) |
| Hansen disease [§] | — | 51 | 2 | 81 | 82 | 82 | 98 | 103 | |
| Hantavirus pulmonary syndrome [§] | — | 24 | 0 | 21 | 30 | 23 | 20 | 20 | |
| Hemolytic uremic syndrome, postdiarrheal [§] | — | 213 | 5 | 329 | 274 | 290 | 266 | 242 | |
| Hepatitis B, virus infection perinatal | — | 33 | 2 | 48 | 40 | U | U | U | |
| Influenza-associated pediatric mortality ^{§, ††} | 6 | 124 | 3 | 160 | 52 | 118 | 61 | 358 | MN (1), KS (1), TN (3), VA (1) |
| Leptospirosis | — | 21 | 0 | NN | NN | NN | NN | NN | |
| Listeriosis | 7 | 637 | 16 | 735 | 727 | 870 | 821 | 851 | RI (1), PA (2), OH (2), WA (1), CA (1) |
| Measles ^{§§} | — | 554 | 1 | 187 | 55 | 220 | 63 | 71 | |
| Meningococcal disease, invasive ^{¶¶} : | | | | | | | | | |
| A, C, Y, and W-135 | 1 | 93 | 6 | 142 | 161 | 257 | 280 | 301 | ME (1) |
| serogroup B | — | 59 | 3 | 99 | 110 | 159 | 135 | 174 | |
| other serogroup | — | 19 | 1 | 17 | 20 | 20 | 12 | 23 | |
| unknown serogroup | 2 | 215 | 10 | 298 | 260 | 323 | 406 | 482 | GA (1), FL (1) |
| Novel influenza A virus infections ^{***} | — | 3 | 50 | 21 | 313 | 14 | 4 | 43,774 | |
| Plague | — | 5 | — | 4 | 4 | 3 | 2 | 8 | |
| Poliomyelitis, paralytic | — | — | 0 | 1 | — | — | — | 1 | |
| Polio virus Infection, nonparalytic [§] | — | — | — | — | — | — | — | — | |
| Psittacosis [§] | — | 7 | 0 | 6 | 2 | 2 | 4 | 9 | |
| Q fever, total [§] | — | 139 | 4 | 170 | 135 | 134 | 131 | 113 | |
| acute | — | 113 | 3 | 137 | 113 | 110 | 106 | 93 | |
| chronic | — | 26 | 1 | 33 | 22 | 24 | 25 | 20 | |
| Rabies, human | — | 1 | 0 | 2 | 1 | 6 | 2 | 4 | |
| Rubella ^{†††} | 1 | 7 | 0 | 9 | 9 | 4 | 5 | 3 | FL (1) |
| Rubella, congenital syndrome | — | — | 0 | 1 | 3 | — | — | 2 | |
| SARS-CoV [§] | — | — | — | — | — | — | — | — | |
| Smallpox [§] | — | — | — | — | — | — | — | — | |
| Streptococcal toxic-shock syndrome [§] | 1 | 183 | 5 | 224 | 194 | 168 | 142 | 161 | ME (1) |
| Syphilis, congenital (age <1 yr) ^{§§§} | — | 298 | 7 | 348 | 322 | 360 | 377 | 423 | |
| Tetanus | — | 21 | 1 | 26 | 37 | 36 | 26 | 18 | |
| Toxic-shock syndrome (staphylococcal) [§] | 1 | 51 | 2 | 71 | 65 | 78 | 82 | 74 | TN (1) |
| Trichinellosis | — | 13 | 0 | 22 | 18 | 15 | 7 | 13 | |
| Tularemia | — | 150 | 1 | 203 | 149 | 166 | 124 | 93 | |
| Typhoid fever | 2 | 288 | 9 | 338 | 354 | 390 | 467 | 397 | NYC (2) |
| Vancomycin-intermediate <i>Staphylococcus aureus</i> [§] | 1 | 189 | 3 | 248 | 134 | 82 | 91 | 78 | MO (1) |
| Vancomycin-resistant <i>Staphylococcus aureus</i> [§] | — | — | 0 | — | 2 | — | 2 | 1 | |
| Vibriosis (noncholera <i>Vibrio</i> species infections) [§] | 1 | 1,125 | 13 | 1,299 | 1,111 | 832 | 846 | 789 | FL (1) |
| Viral hemorrhagic fever ^{¶¶¶} | — | 7 | — | — | — | — | 1 | NN | |
| Yellow fever | — | — | — | — | — | — | — | — | |

See Table 1 footnotes on next page.

TABLE I. (Continued) Provisional cases of infrequently reported notifiable diseases (<1,000 cases reported during the preceding year) — United States, week ending December 27, 2014 (52nd week)*

—: No reported cases. N: Not reportable. NN: Not Nationally Notifiable. Cum: Cumulative year-to-date counts.
 * Case counts for reporting year 2014 are provisional and subject to change. For further information on interpretation of these data, see <http://www.cdc.gov/nndss/document/ProvisionalNationalNotifiableDiseasesSurveillanceData20100927.pdf>.
 † Calculated by summing the incidence counts for the current week, the 2 weeks preceding the current week, and the 2 weeks following the current week, for a total of 5 preceding years. Additional information is available at <http://www.cdc.gov/nndss/document/5yearweeklyaverage.pdf>.
 ‡ Not reportable in all states. Data from states where the condition is not reportable are excluded from this table except starting in 2007 for the arboviral diseases, STD data, TB data, and influenza-associated pediatric mortality, and in 2003 for SARS-CoV. Reporting exceptions are available at http://www.cdc.gov/nndss/document/SRCA_FINAL_REPORT_2006-2012_final.xlsx.
 § Includes both neuroinvasive and nonneuroinvasive. Updated weekly from reports to the Division of Vector-Borne Infectious Diseases, National Center for Zoonotic, Vector-Borne, and Enteric Diseases (ArboNET Surveillance). Data for West Nile virus are available in Table II.
 ** Data for *H. influenzae* (all ages, all serotypes) are available in Table II.
 †† Updated weekly from reports to the Influenza Division, National Center for Immunization and Respiratory Diseases. Since September 28, 2014, 21 influenza-associated pediatric death occurring during the 2014-15 influenza season have been reported.
 ‡‡ No measles cases were reported for the current week.
 ¶¶ Data for meningococcal disease (all serogroups) are available in Table II.
 *** CDC discontinued reporting of individual confirmed and probable cases of influenza A (H1N1)pdm09 virus infections on July 24, 2009. During 2009, four cases of human infection with novel influenza A viruses, different from the influenza A (H1N1)pdm09 virus, were reported to CDC. The four cases of novel influenza A virus infection reported to CDC during 2010, the fourteen cases reported during 2011, the 313 cases reported in 2012, the 21 cases reported during 2013, and the three cases reported for 2014 are different from the influenza A (H1N1)pdm09 virus. Total case counts are provided by the Influenza Division, National Center for Immunization and Respiratory Diseases (NCIRD).
 ††† The one rubella case reported for the current week was imported.
 §§§ Updated weekly from reports to the Division of STD Prevention, National Center for HIV/AIDS, Viral Hepatitis, STD, and TB Prevention.
 ¶¶¶ There were no cases of viral hemorrhagic fever reported during the current week. In addition to the 4 cases of Ebola diagnosed in the United States to date in 2014, six residents of the US have been medically evacuated to the US for care after developing Ebola in West Africa. Ten of the 11 VHF cases reported for 2014 are confirmed as Ebola and one as Lassa Fever. See Table II for dengue hemorrhagic fever.

FIGURE I. Selected notifiable disease reports, United States, comparison of provisional 4-week totals December 27, 2014, with historical data



* Ratio of current 4-week total to mean of 15 4-week totals (from previous, comparable, and subsequent 4-week periods for the past 5 years). The point where the hatched area begins is based on the mean and two standard deviations of these 4-week totals.

Notifiable Disease Data Team and 122 Cities Mortality Data Team

David W. Walker

| | |
|--------------------|--------------------|
| Deborah A. Adams | Willie J. Anderson |
| Lenee Blanton | Rosaline Dhara |
| Diana Harris Onweh | Alan W. Schley |
| Pearl C. Sharp | |

Data presented by the Notifiable Disease Data Team and 122 Cities Mortality Data Team in the weekly *MMWR* are provisional, based on weekly reports to CDC by state health departments. Readers who have difficulty accessing this PDF file may access the HTML file at <http://www.cdc.gov/mmwr/preview/mmwrhtml/mm6351&52md.htm>. Address all inquiries about the *MMWR* Series, including material to be considered for publication, to Editor, *MMWR* Series, Mailstop E-90, CDC, 1600 Clifton Rd., N.E., Atlanta, GA 30329-4027 or to mmwrq@cdc.gov.

Morbidity and Mortality Weekly Report

TABLE II. Provisional cases of selected notifiable diseases, United States, weeks ending December 27, 2014, and December 28, 2013 (52nd week)* (Export data)

| Reporting area | <i>Babesiosis</i> | | | | | <i>Chlamydia trachomatis</i> infection | | | | | Coccidioidomycosis | | | | |
|----------------------|-------------------|-------------------|-----|----------|----------|--|-------------------|--------|-----------|-----------|--------------------|-------------------|-----|----------|----------|
| | Current week | Previous 52 weeks | | Cum 2014 | Cum 2013 | Current week | Previous 52 weeks | | Cum 2014 | Cum 2013 | Current week | Previous 52 weeks | | Cum 2014 | Cum 2013 |
| | | Med | Max | | | | Med | Max | | | | Med | Max | | |
| United States | 1 | 10 | 157 | 1,544 | 1,796 | 5,554 | 26,636 | 29,166 | 1,330,942 | 1,395,492 | 35 | 166 | 243 | 8,198 | 9,438 |
| New England | 1 | 5 | 92 | 887 | 920 | 111 | 848 | 1,173 | 43,659 | 48,696 | — | 0 | 2 | 5 | 1 |
| Connecticut | — | 0 | 27 | 168 | 289 | — | 241 | 394 | 12,487 | 12,775 | N | 0 | 0 | N | N |
| Maine | — | 0 | 5 | 42 | 36 | — | 73 | 109 | 3,423 | 3,438 | N | 0 | 0 | N | N |
| Massachusetts | — | 2 | 57 | 506 | 425 | — | 396 | 535 | 19,693 | 23,210 | — | 0 | 0 | — | — |
| New Hampshire | — | 0 | 5 | 29 | 22 | — | 45 | 74 | 2,029 | 3,119 | — | 0 | 2 | 3 | 1 |
| Rhode Island | 1 | 0 | 18 | 139 | 142 | 95 | 80 | 171 | 4,225 | 4,312 | — | 0 | 1 | 2 | — |
| Vermont | — | 0 | 1 | 3 | 6 | 16 | 34 | 69 | 1,802 | 1,842 | N | 0 | 0 | N | N |
| Mid. Atlantic | — | 5 | 71 | 612 | 705 | 1,679 | 3,449 | 3,954 | 175,366 | 176,186 | — | 0 | 0 | — | — |
| New Jersey | — | 1 | 24 | 162 | 171 | 89 | 586 | 694 | 29,477 | 28,327 | N | 0 | 0 | N | N |
| New York (Upstate) | — | 3 | 56 | 390 | 459 | 632 | 755 | 1,866 | 37,926 | 37,922 | N | 0 | 0 | N | N |
| New York City | — | 0 | 9 | 60 | 75 | 355 | 1,185 | 1,280 | 58,660 | 57,881 | N | 0 | 0 | N | N |
| Pennsylvania | N | 0 | 0 | N | N | 603 | 947 | 1,305 | 49,303 | 52,056 | N | 0 | 0 | N | N |
| E.N. Central | — | 0 | 4 | 32 | 85 | 985 | 3,915 | 4,531 | 194,186 | 213,348 | — | 1 | 3 | 50 | 28 |
| Illinois | — | 0 | 1 | 1 | 4 | 7 | 1,038 | 1,412 | 48,207 | 63,797 | N | 0 | 0 | N | N |
| Indiana | — | 0 | 0 | — | 1 | 408 | 546 | 921 | 28,490 | 28,023 | N | 0 | 0 | N | N |
| Michigan | — | 0 | 1 | 2 | 2 | 264 | 851 | 1,207 | 43,254 | 44,835 | — | 0 | 3 | 31 | 16 |
| Ohio | — | 0 | 0 | — | — | 137 | 1,055 | 1,247 | 52,834 | 53,121 | — | 0 | 2 | 16 | 7 |
| Wisconsin | — | 0 | 4 | 29 | 78 | 169 | 438 | 513 | 21,401 | 23,572 | — | 0 | 1 | 3 | 5 |
| W.N. Central | — | 0 | 1 | 1 | 67 | 188 | 1,592 | 1,797 | 78,749 | 82,195 | — | 2 | 6 | 117 | 91 |
| Iowa | N | 0 | 0 | N | N | 6 | 227 | 257 | 10,257 | 10,953 | N | 0 | 0 | N | N |
| Kansas | N | 0 | 0 | N | N | 2 | 210 | 259 | 10,609 | 11,012 | N | 0 | 0 | N | N |
| Minnesota | — | 0 | 0 | — | 64 | — | 356 | 426 | 16,653 | 18,742 | — | 1 | 6 | 88 | 64 |
| Missouri | N | 0 | 0 | N | N | 180 | 543 | 635 | 27,445 | 27,328 | — | 0 | 1 | 17 | 17 |
| Nebraska | — | 0 | 0 | — | 1 | — | 130 | 253 | 5,602 | 7,301 | — | 0 | 1 | 4 | 1 |
| North Dakota | — | 0 | 0 | — | 1 | — | 64 | 86 | 3,198 | 2,932 | — | 0 | 1 | 8 | 9 |
| South Dakota | — | 0 | 1 | 1 | 1 | — | 80 | 100 | 3,985 | 3,927 | N | 0 | 0 | N | N |
| S. Atlantic | — | 0 | 2 | 7 | 12 | 1,365 | 5,378 | 6,987 | 271,435 | 275,653 | — | 0 | 2 | 9 | 8 |
| Delaware | — | 0 | 1 | 1 | 2 | 92 | 74 | 220 | 4,381 | 5,213 | — | 0 | 0 | — | 1 |
| District of Columbia | N | 0 | 0 | N | N | U | 0 | 0 | U | U | — | 0 | 1 | — | 1 |
| Florida | N | 0 | 0 | N | N | 542 | 1,597 | 1,887 | 82,193 | 80,182 | N | 0 | 0 | N | N |
| Georgia | N | 0 | 0 | N | N | 193 | 1,000 | 2,050 | 47,848 | 51,070 | N | 0 | 0 | N | N |
| Maryland | — | 0 | 1 | 3 | 9 | — | 476 | 817 | 24,145 | 26,723 | — | 0 | 2 | 9 | 6 |
| North Carolina | N | 0 | 0 | N | N | 23 | 882 | 1,840 | 45,743 | 48,416 | N | 0 | 0 | N | N |
| South Carolina | — | 0 | 2 | 3 | 1 | 83 | 524 | 923 | 26,766 | 25,594 | N | 0 | 0 | N | N |
| Virginia | N | 0 | 0 | N | N | 432 | 695 | 1,267 | 35,820 | 33,316 | N | 0 | 0 | N | N |
| West Virginia | — | 0 | 0 | — | — | — | 89 | 140 | 4,539 | 5,139 | N | 0 | 0 | N | N |
| E.S. Central | — | 0 | 1 | 1 | — | 55 | 1,791 | 2,562 | 91,718 | 94,432 | — | 0 | 0 | — | — |
| Alabama | — | 0 | 1 | 1 | — | — | 488 | 734 | 23,484 | 29,464 | N | 0 | 0 | N | N |
| Kentucky | N | 0 | 0 | N | N | — | 334 | 608 | 16,660 | 17,134 | N | 0 | 0 | N | N |
| Mississippi | N | 0 | 0 | N | N | — | 420 | 1,239 | 23,080 | 17,464 | N | 0 | 0 | N | N |
| Tennessee | — | 0 | 0 | — | — | 55 | 584 | 871 | 28,494 | 30,370 | N | 0 | 0 | N | N |
| W.S. Central | — | 0 | 1 | 1 | 3 | 45 | 3,525 | 4,322 | 174,740 | 192,325 | — | 0 | 1 | 3 | 4 |
| Arkansas | N | 0 | 0 | N | N | 22 | 316 | 422 | 15,578 | 15,447 | N | 0 | 0 | N | N |
| Louisiana | — | 0 | 0 | — | 2 | — | 465 | 1,359 | 22,508 | 28,739 | — | 0 | 1 | 3 | 4 |
| Oklahoma | N | 0 | 0 | N | N | 23 | 286 | 344 | 14,082 | 18,278 | N | 0 | 0 | N | N |
| Texas | — | 0 | 1 | 1 | 1 | — | 2,440 | 2,802 | 122,572 | 129,861 | N | 0 | 0 | N | N |
| Mountain | — | 0 | 0 | — | — | 28 | 1,785 | 2,430 | 91,717 | 93,766 | 30 | 116 | 180 | 5,763 | 6,029 |
| Arizona | N | 0 | 0 | N | N | — | 615 | 937 | 31,027 | 30,564 | 30 | 114 | 177 | 5,630 | 5,861 |
| Colorado | N | 0 | 0 | N | N | — | 397 | 749 | 20,126 | 20,386 | N | 0 | 0 | N | N |
| Idaho | N | 0 | 0 | N | N | — | 102 | 135 | 5,164 | 5,428 | N | 0 | 0 | N | N |
| Montana | — | 0 | 0 | — | — | 1 | 80 | 126 | 4,044 | 3,818 | — | 0 | 2 | 9 | 3 |
| Nevada | N | 0 | 0 | N | N | 5 | 196 | 602 | 11,026 | 11,781 | — | 1 | 4 | 66 | 90 |
| New Mexico | N | 0 | 0 | N | N | — | 221 | 307 | 10,916 | 12,249 | — | 0 | 3 | 26 | 30 |
| Utah | — | 0 | 0 | — | — | 22 | 155 | 187 | 7,865 | 7,535 | — | 0 | 2 | 30 | 42 |
| Wyoming | — | 0 | 0 | — | — | — | 32 | 64 | 1,549 | 2,005 | — | 0 | 1 | 2 | 3 |
| Pacific | — | 0 | 1 | 3 | 4 | 1,098 | 4,130 | 5,084 | 209,372 | 218,891 | 5 | 44 | 80 | 2,251 | 3,277 |
| Alaska | N | 0 | 0 | N | N | 12 | 106 | 145 | 5,476 | 5,774 | — | 0 | 0 | — | — |
| California | — | 0 | 1 | 2 | 3 | 714 | 3,255 | 4,117 | 165,732 | 167,346 | 5 | 44 | 80 | 2,247 | 3,272 |
| Hawaii | N | 0 | 0 | N | N | — | 116 | 148 | 5,870 | 6,640 | N | 0 | 0 | N | N |
| Oregon | — | 0 | 1 | 1 | — | 207 | 304 | 395 | 15,403 | 14,181 | — | 0 | 1 | 4 | 5 |
| Washington | — | 0 | 1 | — | 1 | 165 | 354 | 453 | 16,891 | 24,950 | N | 0 | 0 | N | N |
| Territories | | | | | | | | | | | | | | | |
| American Samoa | N | — | — | N | N | — | — | — | — | — | N | — | — | N | N |
| C.N.M.I. | — | — | — | — | — | — | — | — | — | — | — | — | — | — | — |
| Guam | — | 0 | 0 | — | — | — | 11 | 11 | — | 937 | — | 0 | 0 | — | 1 |
| Puerto Rico | N | 0 | 0 | N | N | — | 82 | 317 | 4,809 | 5,969 | N | 0 | 0 | N | N |
| U.S. Virgin Islands | N | 0 | 0 | N | N | — | 14 | 24 | 519 | 749 | — | 0 | 0 | — | — |

C.N.M.I.: Commonwealth of Northern Mariana Islands.

U: Unavailable. —: No reported cases. N: Not reportable. NN: Not Nationally Notifiable. Cum: Cumulative year-to-date counts. Med: Median. Max: Maximum.

* Case counts for reporting year 2014 are provisional and subject to change. For further information on interpretation of these data, see <http://www.cdc.gov/nndss/document/ProvisionalNationalNotifiableDiseasesSurveillanceData20100927.pdf>. Data for TB are displayed in Table IV, which appears quarterly.

Morbidity and Mortality Weekly Report

TABLE II. (Continued) Provisional cases of selected notifiable diseases, United States, weeks ending December 27, 2014, and December 28, 2013 (52nd week)* (Export data)

| Reporting area | Dengue Virus Infection | | | | | | | | | | | | | | |
|----------------------|------------------------|-------------------|-----|----------|----------|---------------|-------------------|----|----------|----------|---------------------------|-------------------|---|----------|----------|
| | Cryptosporidiosis | | | | | Dengue Fever† | | | | | Dengue Hemorrhagic Fever‡ | | | | |
| | Current week | Previous 52 weeks | | Cum 2014 | Cum 2013 | Current week | Previous 52 weeks | | Cum 2014 | Cum 2013 | Current week | Previous 52 weeks | | Cum 2014 | Cum 2013 |
| | Med | Max | | | | Med | Max | | | | Med | Max | | | |
| United States | 48 | 113 | 337 | 7,673 | 9,056 | — | 8 | 21 | 459 | 837 | — | 0 | 0 | — | 6 |
| New England | — | 5 | 17 | 300 | 277 | — | 0 | 3 | 27 | 34 | — | 0 | 0 | — | — |
| Connecticut | — | 0 | 3 | 40 | 36 | — | 0 | 1 | 2 | 18 | — | 0 | 0 | — | — |
| Maine | — | 1 | 4 | 48 | 35 | — | 0 | 1 | 1 | 1 | — | 0 | 0 | — | — |
| Massachusetts | — | 3 | 9 | 136 | 123 | — | 0 | 2 | 15 | — | — | 0 | 0 | — | — |
| New Hampshire | — | 0 | 3 | 34 | 45 | — | 0 | 0 | — | 4 | — | 0 | 0 | — | — |
| Rhode Island | — | 0 | 4 | 15 | 12 | — | 0 | 1 | 5 | 9 | — | 0 | 0 | — | — |
| Vermont | — | 0 | 7 | 27 | 26 | — | 0 | 2 | 4 | 2 | — | 0 | 0 | — | — |
| Mid. Atlantic | 9 | 12 | 34 | 683 | 844 | — | 2 | 9 | 131 | 206 | — | 0 | 0 | — | 2 |
| New Jersey | — | 0 | 2 | 14 | 70 | — | 1 | 6 | 66 | — | — | 0 | 0 | — | — |
| New York (Upstate) | 2 | 4 | 14 | 236 | 252 | — | 0 | 4 | 25 | 51 | — | 0 | 0 | — | 1 |
| New York City | 1 | 2 | 7 | 93 | 81 | — | 0 | 3 | 34 | 131 | — | 0 | 0 | — | 1 |
| Pennsylvania | 6 | 6 | 15 | 340 | 441 | — | 0 | 1 | 6 | 24 | — | 0 | 0 | — | — |
| E.N. Central | 1 | 21 | 69 | 1,333 | 1,524 | — | 0 | 3 | 23 | 65 | — | 0 | 0 | — | — |
| Illinois | — | 3 | 9 | 146 | 266 | — | 0 | 1 | 3 | 26 | — | 0 | 0 | — | — |
| Indiana | — | 3 | 9 | 135 | 139 | — | 0 | 2 | 4 | 6 | — | 0 | 0 | — | — |
| Michigan | — | 4 | 13 | 229 | 270 | — | 0 | 1 | 3 | 16 | — | 0 | 0 | — | — |
| Ohio | 1 | 6 | 15 | 323 | 372 | — | 0 | 1 | 7 | 9 | — | 0 | 0 | — | — |
| Wisconsin | — | 7 | 32 | 500 | 477 | — | 0 | 2 | 6 | 8 | — | 0 | 0 | — | — |
| W.N. Central | 1 | 14 | 39 | 855 | 2,547 | — | 0 | 1 | 7 | 38 | — | 0 | 0 | — | 3 |
| Iowa | — | 4 | 13 | 247 | 1,505 | — | 0 | 1 | 4 | — | — | 0 | 0 | — | 2 |
| Kansas | — | 1 | 4 | 63 | 99 | — | 0 | 1 | 1 | 8 | — | 0 | 0 | — | — |
| Minnesota | — | 0 | 2 | — | 324 | — | 0 | 0 | — | 21 | — | 0 | 0 | — | 1 |
| Missouri | — | 3 | 13 | 155 | 210 | — | 0 | 1 | 2 | 5 | — | 0 | 0 | — | — |
| Nebraska | 1 | 2 | 9 | 103 | 151 | — | 0 | 0 | — | — | — | 0 | 0 | — | — |
| North Dakota | — | 1 | 16 | 140 | 84 | — | 0 | 0 | — | 1 | — | 0 | 0 | — | — |
| South Dakota | — | 2 | 9 | 147 | 174 | — | 0 | 0 | — | 3 | — | 0 | 0 | — | — |
| S. Atlantic | 26 | 27 | 150 | 2,511 | 1,181 | — | 2 | 6 | 107 | 216 | — | 0 | 0 | — | 1 |
| Delaware | — | 0 | 1 | 6 | 16 | — | 0 | 1 | 1 | 2 | — | 0 | 0 | — | — |
| District of Columbia | — | 0 | 1 | 3 | 15 | — | 0 | 1 | 2 | — | — | 0 | 0 | — | — |
| Florida | 23 | 14 | 123 | 1,866 | 409 | — | 1 | 5 | 73 | 151 | — | 0 | 0 | — | — |
| Georgia | 2 | 3 | 19 | 199 | 287 | — | 0 | 1 | 3 | 9 | — | 0 | 0 | — | — |
| Maryland | 1 | 1 | 6 | 78 | 65 | — | 0 | 2 | 7 | 11 | — | 0 | 0 | — | — |
| North Carolina | — | 0 | 42 | 165 | 126 | — | 0 | 2 | 8 | 13 | — | 0 | 0 | — | — |
| South Carolina | — | 1 | 4 | 65 | 98 | — | 0 | 1 | 2 | 7 | — | 0 | 0 | — | — |
| Virginia | — | 2 | 8 | 121 | 144 | — | 0 | 3 | 11 | 21 | — | 0 | 0 | — | 1 |
| West Virginia | — | 0 | 2 | 8 | 21 | — | 0 | 0 | — | 2 | — | 0 | 0 | — | — |
| E.S. Central | 4 | 6 | 17 | 353 | 352 | — | 0 | 1 | 7 | 16 | — | 0 | 0 | — | — |
| Alabama | — | 2 | 8 | 124 | 144 | — | 0 | 1 | 3 | 5 | — | 0 | 0 | — | — |
| Kentucky | — | 1 | 6 | 70 | 72 | — | 0 | 0 | — | — | — | 0 | 0 | — | — |
| Mississippi | — | 1 | 6 | 66 | 49 | — | 0 | 1 | 2 | 1 | — | 0 | 0 | — | — |
| Tennessee | 4 | 2 | 6 | 93 | 87 | — | 0 | 1 | 2 | 10 | — | 0 | 0 | — | — |
| W.S. Central | 2 | 12 | 46 | 696 | 923 | — | 0 | 3 | 27 | 107 | — | 0 | 0 | — | — |
| Arkansas | — | 1 | 12 | 54 | 57 | — | 0 | 2 | 2 | 2 | — | 0 | 0 | — | — |
| Louisiana | 1 | 2 | 17 | 217 | 378 | — | 0 | 1 | 2 | 6 | — | 0 | 0 | — | — |
| Oklahoma | — | 1 | 10 | 83 | 76 | — | 0 | 0 | — | 4 | — | 0 | 0 | — | — |
| Texas | 1 | 6 | 37 | 342 | 412 | — | 0 | 3 | 23 | 95 | — | 0 | 0 | — | — |
| Mountain | 3 | 8 | 20 | 432 | 734 | — | 0 | 10 | 31 | 12 | — | 0 | 0 | — | — |
| Arizona | — | 1 | 5 | 44 | 42 | — | 0 | 10 | 26 | 1 | — | 0 | 0 | — | — |
| Colorado | — | 1 | 5 | 57 | 99 | — | 0 | 0 | — | — | — | 0 | 0 | — | — |
| Idaho | 2 | 1 | 14 | 99 | 147 | — | 0 | 1 | 1 | 1 | — | 0 | 0 | — | — |
| Montana | 1 | 1 | 5 | 64 | 125 | — | 0 | 1 | 1 | 5 | — | 0 | 0 | — | — |
| Nevada | — | 0 | 2 | 14 | 20 | — | 0 | 1 | 3 | 4 | — | 0 | 0 | — | — |
| New Mexico | — | 1 | 7 | 74 | 49 | — | 0 | 0 | — | — | — | 0 | 0 | — | — |
| Utah | — | 1 | 4 | 59 | 86 | — | 0 | 0 | — | — | — | 0 | 0 | — | — |
| Wyoming | — | 0 | 4 | 21 | 166 | — | 0 | 0 | — | 1 | — | 0 | 0 | — | — |
| Pacific | 2 | 9 | 24 | 510 | 674 | — | 2 | 7 | 99 | 143 | — | 0 | 0 | — | — |
| Alaska | — | 0 | 1 | 4 | 6 | — | 0 | 1 | 3 | 1 | — | 0 | 0 | — | — |
| California | 1 | 6 | 19 | 336 | 306 | — | 1 | 7 | 81 | 119 | — | 0 | 0 | — | — |
| Hawaii | — | 0 | 2 | 3 | 1 | — | 0 | 2 | 6 | 10 | — | 0 | 0 | — | — |
| Oregon | 1 | 2 | 7 | 109 | 277 | — | 0 | 0 | — | — | — | 0 | 0 | — | — |
| Washington | — | 0 | 9 | 58 | 84 | — | 0 | 2 | 9 | 13 | — | 0 | 0 | — | — |
| Territories | | | | | | | | | | | | | | | |
| American Samoa | N | — | — | N | N | — | — | — | — | — | — | — | — | — | — |
| C.N.M.I. | — | — | — | — | — | — | — | — | — | — | — | — | — | — | — |
| Guam | — | 0 | 0 | — | — | — | 0 | 0 | — | — | — | 0 | 0 | — | — |
| Puerto Rico | N | 0 | 0 | N | N | — | 6 | 40 | 459 | 9,557 | — | 0 | 2 | 2 | 153 |
| U.S. Virgin Islands | — | 0 | 0 | — | — | — | 0 | 2 | 7 | 169 | — | 0 | 0 | — | 5 |

C.N.M.I.: Commonwealth of Northern Mariana Islands.

U: Unavailable. —: No reported cases. N: Not reportable. NN: Not Nationally Notifiable. Cum: Cumulative year-to-date counts. Med: Median. Max: Maximum.

* Case counts for reporting year 2014 are provisional and subject to change. For further information on interpretation of these data, see <http://www.cdc.gov/nndss/document/ProvisionalNationalNotifiableDiseasesSurveillanceData20100927.pdf>. Data for TB are displayed in Table IV, which appears quarterly.

† Dengue Fever includes cases that meet criteria for Dengue Fever with hemorrhage, other clinical and unknown case classifications.

‡ DHF includes cases that meet criteria for dengue shock syndrome (DSS), a more severe form of DHF.

Morbidity and Mortality Weekly Report

TABLE II. (Continued) Provisional cases of selected notifiable diseases, United States, weeks ending December 27, 2014, and December 28, 2013 (52nd week)* (Export data)

| Reporting area | Ehrlichiosis/Anaplasmosis† | | | | | | | | | | | | | | |
|----------------------|------------------------------|-------------------|-----|----------|----------|----------------------------------|-------------------|-----|----------|----------|--------------|-------------------|----|----------|----------|
| | <i>Ehrlichia chaffeensis</i> | | | | | <i>Anaplasma phagocytophilum</i> | | | | | Undetermined | | | | |
| | Current week | Previous 52 weeks | | Cum 2014 | Cum 2013 | Current week | Previous 52 weeks | | Cum 2014 | Cum 2013 | Current week | Previous 52 weeks | | Cum 2014 | Cum 2013 |
| | Med | Max | | | | Med | Max | | | | Med | Max | | | |
| United States | 1 | 19 | 101 | 1,396 | 1,509 | 9 | 27 | 145 | 1,990 | 2,451 | — | 1 | 12 | 135 | 217 |
| New England | — | 0 | 6 | 49 | 65 | 1 | 9 | 72 | 944 | 417 | — | 0 | 2 | 5 | 7 |
| Connecticut | — | 0 | 0 | — | — | — | 0 | 11 | 62 | 125 | — | 0 | 0 | — | — |
| Maine | — | 0 | 1 | 8 | 3 | 1 | 3 | 13 | 184 | 94 | — | 0 | 2 | 5 | 2 |
| Massachusetts | — | 0 | 3 | 19 | — | — | 3 | 40 | 468 | — | — | 0 | 0 | — | — |
| New Hampshire | — | 0 | 1 | 4 | 7 | — | 1 | 11 | 87 | 88 | — | 0 | 0 | — | 2 |
| Rhode Island | — | 0 | 4 | 17 | 49 | — | 0 | 11 | 78 | 69 | — | 0 | 0 | — | — |
| Vermont | — | 0 | 1 | 1 | 6 | — | 1 | 6 | 65 | 41 | — | 0 | 0 | — | 3 |
| Mid. Atlantic | — | 2 | 20 | 179 | 166 | 8 | 8 | 42 | 504 | 591 | — | 0 | 3 | 12 | 37 |
| New Jersey | — | 0 | 7 | 52 | 50 | — | 1 | 6 | 64 | 80 | — | 0 | 2 | 4 | 2 |
| New York (Upstate) | — | 1 | 17 | 107 | 92 | 8 | 7 | 36 | 399 | 454 | — | 0 | 3 | 8 | 18 |
| New York City | — | 0 | 3 | 18 | 14 | — | 0 | 5 | 41 | 23 | — | 0 | 0 | — | — |
| Pennsylvania | — | 0 | 1 | 2 | 10 | — | 0 | 0 | — | 34 | — | 0 | 1 | — | 17 |
| E.N. Central | — | 0 | 5 | 59 | 89 | — | 5 | 48 | 433 | 705 | — | 1 | 7 | 75 | 93 |
| Illinois | — | 0 | 5 | 47 | 44 | — | 0 | 2 | 16 | 9 | — | 0 | 1 | 1 | — |
| Indiana | — | 0 | 0 | — | — | — | 0 | 0 | — | — | — | 0 | 5 | 38 | 48 |
| Michigan | — | 0 | 1 | 4 | 1 | — | 0 | 2 | 6 | 4 | — | 0 | 0 | — | 1 |
| Ohio | — | 0 | 1 | 4 | 10 | — | 0 | 1 | 2 | 4 | — | 0 | 1 | 1 | 2 |
| Wisconsin | — | 0 | 2 | 4 | 34 | — | 4 | 46 | 409 | 688 | — | 0 | 4 | 35 | 42 |
| W.N. Central | — | 4 | 34 | 377 | 453 | — | 0 | 3 | 35 | 659 | — | 0 | 3 | 24 | 56 |
| Iowa | N | 0 | 0 | N | N | N | 0 | 0 | N | N | N | 0 | 0 | N | N |
| Kansas | — | 0 | 5 | 45 | 86 | — | 0 | 1 | 4 | 7 | — | 0 | 1 | 3 | — |
| Minnesota | — | 0 | 0 | — | 7 | — | 0 | 1 | — | 630 | — | 0 | 0 | — | 42 |
| Missouri | — | 2 | 29 | 324 | 353 | — | 0 | 3 | 24 | 12 | — | 0 | 3 | 21 | 11 |
| Nebraska | — | 0 | 2 | 7 | 6 | — | 0 | 1 | 1 | 2 | — | 0 | 0 | — | — |
| North Dakota | — | 0 | 1 | 1 | — | — | 0 | 1 | 6 | 8 | — | 0 | 0 | — | 3 |
| South Dakota | — | 0 | 0 | — | 1 | — | 0 | 0 | — | — | — | 0 | 0 | — | — |
| S. Atlantic | — | 4 | 24 | 293 | 288 | — | 0 | 6 | 43 | 48 | — | 0 | 1 | 1 | 7 |
| Delaware | — | 0 | 5 | 22 | 14 | — | 0 | 1 | 2 | — | — | 0 | 0 | — | 1 |
| District of Columbia | N | 0 | 0 | N | N | N | 0 | 0 | N | N | N | 0 | 0 | N | N |
| Florida | — | 0 | 3 | 30 | 21 | — | 0 | 2 | 7 | 2 | — | 0 | 0 | — | — |
| Georgia | — | 0 | 2 | 11 | 20 | — | 0 | 0 | — | — | — | 0 | 0 | — | — |
| Maryland | — | 0 | 5 | 44 | 31 | — | 0 | 2 | 7 | 5 | — | 0 | 0 | — | 1 |
| North Carolina | — | 0 | 23 | 69 | 78 | — | 0 | 6 | 10 | 15 | — | 0 | 0 | — | — |
| South Carolina | — | 0 | 2 | 8 | 7 | — | 0 | 0 | — | — | — | 0 | 0 | — | — |
| Virginia | — | 0 | 9 | 106 | 113 | — | 0 | 2 | 15 | 23 | — | 0 | 1 | 1 | 3 |
| West Virginia | — | 0 | 1 | 3 | 4 | — | 0 | 1 | 2 | 3 | — | 0 | 0 | — | 2 |
| E.S. Central | — | 1 | 13 | 157 | 166 | — | 0 | 2 | 10 | 9 | — | 0 | 2 | 12 | 6 |
| Alabama | — | 0 | 2 | 10 | 11 | — | 0 | 1 | 6 | 3 | — | 0 | 1 | 2 | 1 |
| Kentucky | — | 0 | 6 | 60 | 67 | — | 0 | 0 | — | — | — | 0 | 0 | — | — |
| Mississippi | — | 0 | 1 | 4 | 3 | — | 0 | 1 | 1 | 1 | — | 0 | 0 | — | 1 |
| Tennessee | 1 | 0 | 8 | 83 | 85 | — | 0 | 1 | 3 | 5 | — | 0 | 2 | 10 | 4 |
| W.S. Central | — | 4 | 63 | 282 | 280 | — | 0 | 8 | 21 | 18 | — | 0 | 0 | — | — |
| Arkansas | — | 4 | 18 | 211 | 164 | — | 0 | 3 | 14 | 7 | — | 0 | 0 | — | — |
| Louisiana | — | 0 | 1 | 3 | 2 | — | 0 | 1 | 1 | 1 | — | 0 | 0 | — | — |
| Oklahoma | — | 0 | 62 | 58 | 106 | — | 0 | 8 | 3 | 10 | — | 0 | 0 | — | — |
| Texas | — | 0 | 2 | 10 | 8 | — | 0 | 1 | 3 | — | — | 0 | 0 | — | — |
| Mountain | — | 0 | 0 | — | 2 | — | 0 | 0 | — | 1 | — | 0 | 1 | 1 | 2 |
| Arizona | — | 0 | 0 | — | — | — | 0 | 0 | — | — | — | 0 | 1 | 1 | 2 |
| Colorado | N | 0 | 0 | N | N | N | 0 | 0 | N | N | N | 0 | 0 | N | N |
| Idaho | N | 0 | 0 | N | N | N | 0 | 0 | N | N | N | 0 | 0 | N | N |
| Montana | — | 0 | 0 | — | 1 | — | 0 | 0 | — | — | — | 0 | 0 | — | — |
| Nevada | — | 0 | 0 | — | — | — | 0 | 0 | — | 1 | — | 0 | 0 | — | — |
| New Mexico | N | 0 | 0 | N | N | N | 0 | 0 | N | N | N | 0 | 0 | N | N |
| Utah | — | 0 | 0 | — | 1 | — | 0 | 0 | — | — | — | 0 | 0 | — | — |
| Wyoming | — | 0 | 0 | — | — | — | 0 | 0 | — | — | — | 0 | 0 | — | — |
| Pacific | — | 0 | 0 | — | — | — | 0 | 2 | — | 3 | — | 0 | 1 | 5 | 9 |
| Alaska | N | 0 | 0 | N | N | N | 0 | 0 | N | N | N | 0 | 0 | N | N |
| California | — | 0 | 0 | — | — | — | 0 | 0 | — | — | — | 0 | 1 | 5 | 9 |
| Hawaii | N | 0 | 0 | N | N | N | 0 | 0 | N | N | N | 0 | 0 | N | N |
| Oregon | — | 0 | 0 | — | — | — | 0 | 0 | — | 1 | — | 0 | 0 | — | — |
| Washington | — | 0 | 0 | — | — | — | 0 | 2 | — | 2 | — | 0 | 0 | — | — |
| Territories | | | | | | | | | | | | | | | |
| American Samoa | N | — | — | N | N | N | — | — | N | N | N | — | — | N | N |
| C.N.M.I. | — | — | — | — | — | — | — | — | — | — | — | — | — | — | — |
| Guam | N | 0 | 0 | N | N | N | 0 | 0 | N | N | N | 0 | 0 | N | N |
| Puerto Rico | N | 0 | 0 | N | N | N | 0 | 0 | N | N | N | 0 | 0 | N | N |
| U.S. Virgin Islands | — | 0 | 0 | — | — | — | 0 | 0 | — | — | — | 0 | 0 | — | — |

C.N.M.I.: Commonwealth of Northern Mariana Islands.

U: Unavailable. —: No reported cases. N: Not reportable. NN: Not Nationally Notifiable. Cum: Cumulative year-to-date counts. Med: Median. Max: Maximum.

* Case counts for reporting year 2014 are provisional and subject to change. For further information on interpretation of these data, see <http://www.cdc.gov/nndss/document/ProvisionalNationalNotifiableDiseasesSurveillanceData20100927.pdf>. Data for TB are displayed in Table IV, which appears quarterly.

† Cumulative total *E. ewingii* cases reported for year 2014 = 14.

TABLE II. (Continued) Provisional cases of selected notifiable diseases, United States, weeks ending December 27, 2014, and December 28, 2013 (52nd week)* (Export data)

| Reporting area | Giardiasis | | | | | Gonorrhea | | | | | <i>Haemophilus influenzae</i> , invasive† | | | | |
|----------------------|--------------|-------------------|-----|----------|----------|--------------|-------------------|-------|----------|----------|---|-------------------|-----|----------|----------|
| | Current week | Previous 52 weeks | | Cum 2014 | Cum 2013 | Current week | Previous 52 weeks | | Cum 2014 | Cum 2013 | Current week | Previous 52 weeks | | Cum 2014 | Cum 2013 |
| | | Med | Max | | | | Med | Max | | | | Med | Max | | |
| United States | 116 | 232 | 376 | 12,713 | 15,106 | 1,669 | 6,306 | 7,106 | 320,753 | 330,526 | 27 | 59 | 110 | 3,044 | 3,792 |
| New England | 2 | 24 | 48 | 1,265 | 1,443 | 1 | 133 | 190 | 6,749 | 6,883 | — | 4 | 12 | 216 | 362 |
| Connecticut | — | 4 | 9 | 197 | 230 | — | 39 | 116 | 2,135 | 2,860 | — | 1 | 3 | 54 | 55 |
| Maine | 1 | 3 | 8 | 152 | 218 | — | 5 | 10 | 229 | 245 | — | 0 | 2 | 20 | 25 |
| Massachusetts | — | 12 | 25 | 663 | 664 | — | 71 | 113 | 3,559 | 3,106 | — | 2 | 8 | 98 | 232 |
| New Hampshire | — | 1 | 6 | 81 | 117 | — | 4 | 10 | 205 | 121 | — | 0 | 2 | 18 | 25 |
| Rhode Island | — | 0 | 5 | 36 | 41 | 1 | 9 | 41 | 551 | 454 | — | 0 | 9 | 13 | 13 |
| Vermont | 1 | 3 | 8 | 136 | 173 | — | 1 | 6 | 70 | 97 | — | 0 | 2 | 13 | 12 |
| Mid. Atlantic | 44 | 47 | 83 | 2,459 | 2,865 | 384 | 750 | 951 | 39,042 | 40,807 | 11 | 10 | 24 | 524 | 609 |
| New Jersey | — | 2 | 12 | 143 | 336 | 17 | 125 | 170 | 6,519 | 7,014 | — | 3 | 7 | 134 | 114 |
| New York (Upstate) | 19 | 17 | 61 | 910 | 1,010 | 138 | 122 | 339 | 6,378 | 6,460 | 1 | 2 | 17 | 128 | 183 |
| New York City | 14 | 14 | 31 | 741 | 764 | 95 | 260 | 342 | 13,707 | 13,459 | 4 | 2 | 7 | 106 | 105 |
| Pennsylvania | 11 | 13 | 23 | 665 | 755 | 134 | 240 | 321 | 12,438 | 13,874 | 6 | 3 | 7 | 156 | 207 |
| E.N. Central | 8 | 27 | 52 | 1,450 | 1,953 | 236 | 909 | 1,195 | 46,419 | 55,395 | 3 | 8 | 19 | 447 | 640 |
| Illinois | — | 0 | 9 | 32 | 311 | — | 222 | 342 | 10,512 | 16,464 | — | 2 | 6 | 130 | 162 |
| Indiana | — | 3 | 9 | 135 | 203 | 109 | 140 | 280 | 7,264 | 7,144 | — | 2 | 4 | 83 | 141 |
| Michigan | 1 | 9 | 17 | 471 | 547 | 37 | 179 | 262 | 9,347 | 10,569 | — | 2 | 5 | 94 | 102 |
| Ohio | 5 | 7 | 21 | 380 | 507 | 48 | 308 | 374 | 15,516 | 16,619 | 3 | 2 | 9 | 124 | 149 |
| Wisconsin | 2 | 7 | 22 | 432 | 385 | 42 | 77 | 107 | 3,780 | 4,599 | — | 0 | 4 | 16 | 86 |
| W.N. Central | 3 | 15 | 38 | 823 | 1,561 | 88 | 338 | 407 | 17,276 | 17,713 | — | 4 | 14 | 255 | 271 |
| Iowa | 1 | 4 | 11 | 199 | 273 | 1 | 30 | 54 | 1,571 | 1,472 | — | 0 | 2 | 4 | 1 |
| Kansas | — | 2 | 6 | 93 | 102 | 3 | 49 | 71 | 2,493 | 2,161 | — | 0 | 3 | 32 | 40 |
| Minnesota | — | 0 | 7 | — | 618 | — | 73 | 97 | 3,536 | 3,873 | — | 2 | 6 | 104 | 90 |
| Missouri | — | 5 | 13 | 235 | 244 | 84 | 141 | 193 | 7,262 | 7,546 | — | 2 | 6 | 83 | 95 |
| Nebraska | 2 | 2 | 9 | 133 | 169 | — | 23 | 56 | 1,018 | 1,385 | — | 0 | 3 | 23 | 29 |
| North Dakota | — | 1 | 2 | 38 | 44 | — | 12 | 23 | 594 | 492 | — | 0 | 2 | 9 | 13 |
| South Dakota | — | 2 | 9 | 125 | 111 | — | 16 | 27 | 802 | 784 | — | 0 | 0 | — | 3 |
| S. Atlantic | 15 | 48 | 89 | 2,464 | 2,543 | 629 | 1,379 | 1,760 | 69,858 | 71,324 | 8 | 15 | 30 | 770 | 945 |
| Delaware | — | 0 | 3 | 19 | 20 | 26 | 24 | 65 | 1,254 | 1,390 | — | 0 | 3 | 14 | 9 |
| District of Columbia | — | 1 | 3 | 37 | 79 | U | 0 | 0 | U | U | 1 | 0 | 1 | 8 | 12 |
| Florida | 15 | 21 | 54 | 1,144 | 1,114 | 126 | 394 | 517 | 20,243 | 20,818 | 3 | 4 | 12 | 253 | 273 |
| Georgia | — | 12 | 22 | 588 | 641 | 73 | 257 | 612 | 12,741 | 14,252 | — | 2 | 8 | 102 | 162 |
| Maryland | — | 4 | 11 | 242 | 228 | — | 106 | 177 | 5,246 | 5,989 | — | 1 | 5 | 84 | 102 |
| North Carolina | N | 0 | 0 | N | N | 214 | 244 | 512 | 13,581 | 13,666 | 1 | 2 | 9 | 129 | 144 |
| South Carolina | — | 2 | 10 | 146 | 133 | 40 | 155 | 278 | 7,789 | 7,194 | 1 | 1 | 4 | 60 | 106 |
| Virginia | — | 5 | 18 | 236 | 278 | 150 | 143 | 372 | 8,193 | 6,952 | — | 1 | 7 | 80 | 98 |
| West Virginia | — | 1 | 3 | 52 | 50 | — | 16 | 26 | 811 | 1,063 | 2 | 0 | 5 | 40 | 39 |
| E.S. Central | — | 3 | 10 | 163 | 174 | 16 | 470 | 649 | 23,437 | 25,164 | — | 4 | 9 | 209 | 259 |
| Alabama | — | 3 | 10 | 163 | 174 | — | 130 | 184 | 6,159 | 8,377 | — | 1 | 4 | 60 | 74 |
| Kentucky | N | 0 | 0 | N | N | — | 79 | 166 | 4,070 | 4,315 | — | 0 | 3 | 21 | 47 |
| Mississippi | N | 0 | 0 | N | N | — | 125 | 363 | 6,611 | 5,096 | — | 1 | 2 | 35 | 29 |
| Tennessee | N | 0 | 0 | N | N | 16 | 130 | 211 | 6,597 | 7,376 | — | 2 | 6 | 93 | 109 |
| W.S. Central | 3 | 6 | 19 | 344 | 374 | 10 | 938 | 1,278 | 48,568 | 51,814 | 4 | 4 | 8 | 184 | 195 |
| Arkansas | — | 2 | 8 | 108 | 119 | 4 | 89 | 142 | 4,542 | 4,007 | 1 | 1 | 4 | 45 | 25 |
| Louisiana | 3 | 3 | 15 | 236 | 255 | — | 139 | 334 | 6,753 | 8,669 | 1 | 1 | 4 | 43 | 52 |
| Oklahoma | — | 0 | 0 | — | — | 6 | 89 | 130 | 4,445 | 5,303 | 2 | 1 | 4 | 86 | 113 |
| Texas | N | 0 | 0 | N | N | — | 643 | 793 | 32,828 | 33,835 | — | 0 | 1 | 10 | 5 |
| Mountain | 1 | 21 | 45 | 1,070 | 1,148 | 13 | 342 | 436 | 17,345 | 15,316 | — | 6 | 13 | 272 | 328 |
| Arizona | — | 2 | 10 | 105 | 115 | — | 144 | 262 | 7,315 | 6,412 | — | 1 | 8 | 90 | 112 |
| Colorado | — | 6 | 17 | 330 | 355 | — | 59 | 86 | 2,910 | 2,820 | — | 0 | 4 | 38 | 81 |
| Idaho | 1 | 3 | 9 | 153 | 137 | — | 5 | 16 | 256 | 211 | — | 0 | 3 | 16 | 19 |
| Montana | — | 2 | 4 | 85 | 91 | — | 7 | 15 | 390 | 224 | — | 0 | 3 | 15 | 6 |
| Nevada | — | 1 | 5 | 63 | 91 | 9 | 51 | 123 | 2,975 | 2,714 | — | 0 | 2 | 16 | 14 |
| New Mexico | — | 1 | 7 | 92 | 99 | — | 41 | 69 | 2,058 | 1,918 | — | 1 | 3 | 40 | 48 |
| Utah | — | 4 | 11 | 225 | 228 | 4 | 27 | 47 | 1,351 | 951 | — | 1 | 6 | 54 | 42 |
| Wyoming | — | 0 | 2 | 17 | 32 | — | 1 | 8 | 90 | 66 | — | 0 | 1 | 3 | 6 |
| Pacific | 40 | 52 | 107 | 2,675 | 3,045 | 292 | 1,045 | 1,176 | 52,059 | 46,110 | 1 | 3 | 7 | 167 | 183 |
| Alaska | — | 1 | 8 | 84 | 82 | 6 | 25 | 44 | 1,267 | 1,128 | — | 0 | 2 | 25 | 21 |
| California | 37 | 34 | 65 | 1,785 | 1,991 | 180 | 875 | 1,015 | 43,405 | 38,166 | — | 0 | 3 | 32 | 39 |
| Hawaii | — | 1 | 3 | 36 | 60 | — | 17 | 30 | 889 | 718 | — | 0 | 2 | 24 | 28 |
| Oregon | — | 7 | 14 | 343 | 364 | 37 | 42 | 131 | 2,303 | 1,729 | 1 | 1 | 4 | 79 | 84 |
| Washington | 3 | 7 | 66 | 427 | 548 | 69 | 85 | 128 | 4,195 | 4,369 | — | 0 | 3 | 7 | 11 |
| Territories | | | | | | | | | | | | | | | |
| American Samoa | — | — | — | — | — | — | — | — | — | — | — | — | — | — | — |
| C.N.M.I. | — | — | — | — | — | — | — | — | — | — | — | — | — | — | — |
| Guam | — | 0 | 0 | — | 2 | — | 0 | 0 | — | 92 | — | 0 | 0 | — | — |
| Puerto Rico | — | 0 | 10 | 29 | 48 | — | 8 | 30 | 435 | 356 | — | 0 | 0 | — | 1 |
| U.S. Virgin Islands | — | 0 | 0 | — | — | — | 1 | 6 | 55 | 55 | — | 0 | 0 | — | — |

C.N.M.I.: Commonwealth of Northern Mariana Islands.

U: Unavailable. —: No reported cases. N: Not reportable. NN: Not Nationally Notifiable. Cum: Cumulative year-to-date counts. Med: Median. Max: Maximum.

* Case counts for reporting year 2014 are provisional and subject to change. For further information on interpretation of these data, see <http://www.cdc.gov/nndss/document/ProvisionalNationalNotifiableDiseasesSurveillanceData20100927.pdf>. Data for TB are displayed in Table IV, which appears quarterly.† Data for *H. influenzae* (age <5 yrs for serotype b, nonserotype b, and unknown serotype) are available in Table I.

Morbidity and Mortality Weekly Report

TABLE II. (Continued) Provisional cases of selected notifiable diseases, United States, weeks ending December 27, 2014, and December 28, 2013 (52nd week)* (Export data)

| Reporting area | Hepatitis (viral, acute), by type | | | | | | | | | | | | | | |
|----------------------|-----------------------------------|-------------------|----|----------|----------|--------------|-------------------|-----|----------|----------|--------------|-------------------|----|----------|----------|
| | A | | | | B | | | | C | | | | | | |
| | Current week | Previous 52 weeks | | Cum 2014 | Cum 2013 | Current week | Previous 52 weeks | | Cum 2014 | Cum 2013 | Current week | Previous 52 weeks | | Cum 2014 | Cum 2013 |
| | Med | Max | | | | Med | Max | | | | Med | Max | | | |
| United States | 3 | 20 | 41 | 1,084 | 1,781 | 7 | 48 | 116 | 2,567 | 3,050 | 4 | 35 | 67 | 1,707 | 2,138 |
| New England | — | 1 | 7 | 77 | 92 | — | 1 | 3 | 53 | 94 | — | 3 | 11 | 180 | 185 |
| Connecticut | — | 0 | 3 | 22 | 19 | — | 0 | 2 | 8 | 8 | — | 0 | 1 | 7 | — |
| Maine | — | 0 | 2 | 8 | 10 | — | 0 | 1 | 12 | 11 | — | 0 | 2 | 28 | 8 |
| Massachusetts | — | 1 | 3 | 34 | 43 | — | 0 | 2 | 25 | 71 | — | 3 | 10 | 141 | 174 |
| New Hampshire | — | 0 | 2 | 5 | 9 | — | 0 | 1 | 4 | 2 | N | 0 | 0 | N | N |
| Rhode Island | — | 0 | 1 | 6 | 4 | U | 0 | 0 | U | U | U | 0 | 0 | U | U |
| Vermont | — | 0 | 1 | 2 | 7 | — | 0 | 2 | 4 | 2 | — | 0 | 1 | 4 | 3 |
| Mid. Atlantic | 2 | 3 | 8 | 143 | 288 | 3 | 3 | 9 | 179 | 225 | 2 | 4 | 15 | 221 | 318 |
| New Jersey | — | 0 | 2 | 15 | 68 | — | 0 | 3 | 20 | 65 | — | 0 | 3 | 27 | 106 |
| New York (Upstate) | — | 0 | 4 | 38 | 75 | 1 | 1 | 3 | 39 | 49 | 1 | 2 | 11 | 97 | 115 |
| New York City | — | 1 | 4 | 42 | 92 | — | 1 | 6 | 53 | 68 | — | 0 | 4 | 15 | 16 |
| Pennsylvania | 2 | 1 | 4 | 48 | 53 | 2 | 1 | 5 | 67 | 43 | 1 | 1 | 5 | 82 | 81 |
| E.N. Central | — | 3 | 9 | 170 | 290 | 2 | 7 | 62 | 517 | 482 | — | 6 | 17 | 322 | 442 |
| Illinois | — | 1 | 9 | 71 | 79 | — | 1 | 5 | 46 | 94 | — | 0 | 2 | 24 | 37 |
| Indiana | — | 0 | 3 | 15 | 32 | — | 1 | 7 | 74 | 101 | — | 1 | 6 | 67 | 175 |
| Michigan | — | 1 | 4 | 46 | 83 | — | 1 | 4 | 52 | 53 | — | 2 | 8 | 109 | 74 |
| Ohio | — | 0 | 4 | 32 | 59 | 2 | 3 | 12 | 173 | 225 | — | 2 | 15 | 101 | 116 |
| Wisconsin | — | 0 | 1 | 6 | 37 | — | 0 | 57 | 172 | 9 | — | 0 | 2 | 21 | 40 |
| W.N. Central | — | 1 | 5 | 66 | 94 | — | 1 | 4 | 69 | 116 | — | 0 | 3 | 35 | 77 |
| Iowa | — | 0 | 2 | 10 | 17 | — | 0 | 2 | 9 | 11 | — | 0 | 0 | — | — |
| Kansas | — | 0 | 1 | 5 | 11 | — | 0 | 2 | 9 | 11 | — | 0 | 3 | 24 | 17 |
| Minnesota | — | 0 | 2 | 13 | 32 | — | 0 | 1 | 5 | 19 | — | 0 | 1 | 2 | 47 |
| Missouri | — | 0 | 2 | 19 | 8 | — | 1 | 3 | 38 | 61 | — | 0 | 1 | 6 | 6 |
| Nebraska | — | 0 | 2 | 10 | 13 | — | 0 | 1 | 7 | 9 | — | 0 | 1 | 2 | 2 |
| North Dakota | — | 0 | 1 | 7 | 9 | — | 0 | 0 | — | — | — | 0 | 1 | 1 | 4 |
| South Dakota | — | 0 | 1 | 2 | 4 | — | 0 | 1 | 1 | 5 | — | 0 | 0 | — | 1 |
| S. Atlantic | — | 4 | 9 | 217 | 284 | 2 | 16 | 28 | 811 | 884 | 2 | 6 | 22 | 361 | 413 |
| Delaware | — | 0 | 1 | 1 | 4 | — | 0 | 1 | 5 | 14 | U | 0 | 0 | U | U |
| District of Columbia | — | 0 | 0 | — | — | — | 0 | 0 | — | — | — | 0 | 0 | — | — |
| Florida | — | 1 | 5 | 87 | 115 | 1 | 7 | 13 | 327 | 323 | 1 | 2 | 7 | 87 | 134 |
| Georgia | — | 0 | 3 | 25 | 36 | 1 | 2 | 4 | 89 | 104 | — | 0 | 2 | 23 | 48 |
| Maryland | — | 0 | 3 | 29 | 29 | — | 0 | 4 | 38 | 43 | 1 | 0 | 3 | 37 | 53 |
| North Carolina | — | 0 | 6 | 36 | 46 | — | 1 | 13 | 97 | 75 | — | 1 | 20 | 108 | 79 |
| South Carolina | — | 0 | 1 | 6 | 14 | — | 0 | 4 | 35 | 58 | — | 0 | 1 | 4 | — |
| Virginia | — | 0 | 3 | 23 | 36 | — | 1 | 5 | 55 | 72 | — | 1 | 5 | 47 | 41 |
| West Virginia | — | 0 | 1 | 10 | 4 | — | 3 | 9 | 165 | 195 | — | 1 | 6 | 55 | 58 |
| E.S. Central | — | 1 | 3 | 45 | 59 | — | 10 | 16 | 518 | 621 | — | 5 | 11 | 269 | 354 |
| Alabama | — | 0 | 2 | 15 | 10 | — | 2 | 6 | 110 | 90 | — | 0 | 3 | 32 | 30 |
| Kentucky | — | 0 | 2 | 14 | 24 | — | 3 | 7 | 140 | 214 | — | 2 | 8 | 118 | 226 |
| Mississippi | — | 0 | 1 | 4 | 5 | — | 1 | 4 | 45 | 55 | U | 0 | 0 | U | U |
| Tennessee | — | 0 | 2 | 12 | 20 | — | 4 | 8 | 223 | 262 | — | 3 | 7 | 119 | 98 |
| W.S. Central | 1 | 2 | 12 | 138 | 146 | — | 4 | 18 | 223 | 314 | — | 2 | 10 | 92 | 117 |
| Arkansas | — | 0 | 1 | 1 | 9 | — | 0 | 4 | 19 | 50 | — | 0 | 2 | 9 | 30 |
| Louisiana | — | 0 | 2 | 7 | 14 | — | 1 | 4 | 69 | 82 | — | 0 | 3 | 21 | 19 |
| Oklahoma | — | 0 | 4 | 16 | 14 | — | 0 | 10 | 35 | 40 | — | 0 | 8 | 20 | 40 |
| Texas | 1 | 2 | 8 | 114 | 109 | — | 2 | 10 | 100 | 142 | — | 0 | 5 | 42 | 28 |
| Mountain | — | 1 | 4 | 66 | 182 | — | 1 | 4 | 46 | 106 | — | 1 | 5 | 75 | 83 |
| Arizona | — | 0 | 3 | 25 | 66 | — | 0 | 1 | 13 | 28 | U | 0 | 0 | U | U |
| Colorado | — | 0 | 2 | 9 | 51 | — | 0 | 1 | 1 | 24 | — | 0 | 1 | 5 | 21 |
| Idaho | — | 0 | 1 | 7 | 8 | — | 0 | 1 | 6 | 13 | — | 0 | 3 | 7 | 14 |
| Montana | — | 0 | 1 | 5 | 6 | — | 0 | 0 | — | 4 | — | 0 | 2 | 13 | 16 |
| Nevada | — | 0 | 1 | 6 | 19 | — | 0 | 3 | 19 | 29 | — | 0 | 1 | 4 | 9 |
| New Mexico | — | 0 | 2 | 9 | 20 | — | 0 | 1 | 1 | 3 | — | 0 | 1 | 13 | 12 |
| Utah | — | 0 | 1 | 4 | 12 | — | 0 | 1 | 6 | 5 | — | 1 | 2 | 33 | 11 |
| Wyoming | — | 0 | 1 | 1 | — | — | 0 | 0 | — | — | — | 0 | 0 | — | — |
| Pacific | — | 3 | 9 | 162 | 346 | — | 3 | 13 | 151 | 208 | — | 3 | 10 | 152 | 149 |
| Alaska | — | 0 | 1 | 1 | 1 | — | 0 | 1 | 3 | 1 | — | 0 | 0 | — | — |
| California | — | 2 | 7 | 124 | 255 | — | 1 | 6 | 78 | 138 | — | 1 | 4 | 70 | 72 |
| Hawaii | — | 0 | 2 | 5 | 16 | — | 0 | 1 | 4 | 4 | — | 0 | 0 | — | — |
| Oregon | — | 0 | 2 | 13 | 29 | — | 0 | 3 | 30 | 32 | — | 0 | 2 | 15 | 14 |
| Washington | — | 0 | 3 | 19 | 45 | — | 0 | 7 | 36 | 33 | — | 1 | 9 | 67 | 63 |
| Territories | | | | | | | | | | | | | | | |
| American Samoa | — | — | — | — | — | — | — | — | — | — | — | — | — | — | — |
| C.N.M.I. | — | — | — | — | — | — | — | — | — | — | — | — | — | — | — |
| Guam | — | 0 | 0 | — | 31 | — | 0 | 0 | — | 75 | — | 0 | 0 | — | 71 |
| Puerto Rico | — | 0 | 1 | 3 | 10 | — | 0 | 2 | 13 | 36 | N | 0 | 0 | N | N |
| U.S. Virgin Islands | — | 0 | 0 | — | — | — | 0 | 0 | — | — | — | 0 | 0 | — | — |

C.N.M.I.: Commonwealth of Northern Mariana Islands.

U: Unavailable. —: No reported cases. N: Not reportable. NN: Not Nationally Notifiable. Cum: Cumulative year-to-date counts. Med: Median. Max: Maximum.

* Case counts for reporting year 2014 are provisional and subject to change. For further information on interpretation of these data, see <http://www.cdc.gov/nndss/document/ProvisionalNationalNotifiableDiseasesSurveillanceData20100927.pdf>. Data for TB are displayed in Table IV, which appears quarterly.

Morbidity and Mortality Weekly Report

TABLE II. (Continued) Provisional cases of selected notifiable diseases, United States, weeks ending December 27, 2014, and December 28, 2013 (52nd week)* (Export data)

| Reporting area | Invasive Pneumococcal disease† | | | | | | | | | | Legionellosis | | | | |
|----------------------|--------------------------------|-------------------|-----|----------|----------|--------------|-------------------|----|----------|----------|---------------|-------------------|-----|----------|----------|
| | All ages | | | | | Age <5 | | | | | | | | | |
| | Current week | Previous 52 weeks | | Cum 2014 | Cum 2013 | Current week | Previous 52 weeks | | Cum 2014 | Cum 2013 | Current week | Previous 52 weeks | | Cum 2014 | Cum 2013 |
| | Med | Max | | | | Med | Max | | | | Med | Max | | | |
| United States | 109 | 230 | 752 | 12,608 | 16,666 | 7 | 19 | 56 | 913 | 1,171 | 33 | 80 | 179 | 4,486 | 4,954 |
| New England | 3 | 20 | 37 | 995 | 693 | — | 1 | 3 | 48 | 47 | — | 4 | 14 | 236 | 363 |
| Connecticut | — | 4 | 10 | 213 | 315 | — | 0 | 1 | 8 | 16 | — | 1 | 3 | 50 | 63 |
| Maine | 1 | 2 | 8 | 131 | 121 | — | 0 | 1 | 6 | 6 | — | 0 | 4 | 18 | 23 |
| Massachusetts | — | 9 | 24 | 460 | 23 | — | 0 | 2 | 25 | 20 | — | 2 | 8 | 129 | 189 |
| New Hampshire | — | 1 | 6 | 74 | 101 | — | 0 | 1 | 4 | 5 | — | 0 | 2 | 10 | 27 |
| Rhode Island | 1 | 1 | 10 | 64 | 76 | — | 0 | 2 | 4 | — | — | 0 | 10 | 23 | 46 |
| Vermont | 1 | 1 | 3 | 53 | 57 | — | 0 | 1 | 1 | — | — | 0 | 2 | 6 | 15 |
| Mid. Atlantic | 37 | 27 | 115 | 1,370 | 2,293 | 1 | 1 | 10 | 76 | 128 | 14 | 17 | 49 | 992 | 1,431 |
| New Jersey | — | 0 | 19 | 38 | 598 | — | 0 | 1 | 2 | 39 | — | 2 | 6 | 101 | 241 |
| New York (Upstate) | 20 | 14 | 76 | 766 | 1,022 | 1 | 1 | 6 | 44 | 51 | 5 | 6 | 22 | 394 | 456 |
| New York City | 17 | 11 | 25 | 566 | 673 | — | 1 | 4 | 30 | 38 | 6 | 3 | 15 | 205 | 300 |
| Pennsylvania | N | — | — | N | N | N | 0 | 0 | N | N | 3 | 5 | 14 | 292 | 434 |
| E.N. Central | 20 | 45 | 84 | 2,251 | 3,054 | — | 3 | 8 | 142 | 187 | 10 | 17 | 48 | 999 | 1,311 |
| Illinois | N | 0 | 0 | N | N | — | 0 | 3 | 30 | 41 | — | 3 | 16 | 237 | 299 |
| Indiana | — | 9 | 33 | 472 | 726 | — | 0 | 4 | 26 | 36 | 2 | 2 | 13 | 150 | 91 |
| Michigan | — | 10 | 19 | 525 | 743 | — | 0 | 2 | 28 | 43 | — | 3 | 13 | 174 | 272 |
| Ohio | 16 | 18 | 31 | 895 | 1,161 | — | 1 | 4 | 43 | 43 | 8 | 7 | 25 | 405 | 491 |
| Wisconsin | 4 | 6 | 16 | 359 | 424 | — | 0 | 3 | 15 | 24 | — | 0 | 7 | 33 | 158 |
| W.N. Central | 7 | 10 | 37 | 587 | 1,043 | 3 | 1 | 4 | 47 | 99 | — | 3 | 20 | 234 | 183 |
| Iowa | N | 0 | 0 | N | N | N | 0 | 0 | N | N | — | 0 | 3 | 32 | 11 |
| Kansas | — | 2 | 9 | 123 | 149 | N | 0 | 0 | N | N | — | 0 | 2 | 14 | 17 |
| Minnesota | — | 0 | 18 | 159 | 536 | — | 0 | 3 | 8 | 43 | — | 1 | 7 | 55 | 49 |
| Missouri | N | 0 | 0 | N | N | — | 0 | 3 | 21 | 32 | — | 1 | 12 | 96 | 77 |
| Nebraska | 5 | 3 | 8 | 148 | 156 | 3 | 0 | 2 | 14 | 14 | — | 0 | 2 | 23 | 19 |
| North Dakota | 2 | 1 | 4 | 70 | 103 | — | 0 | 1 | 4 | 10 | — | 0 | 1 | 4 | 3 |
| South Dakota | — | 2 | 5 | 87 | 99 | N | 0 | 0 | N | N | — | 0 | 2 | 10 | 7 |
| S. Atlantic | 23 | 48 | 128 | 2,629 | 3,601 | 1 | 5 | 9 | 224 | 288 | 3 | 16 | 36 | 886 | 770 |
| Delaware | — | 1 | 5 | 33 | 29 | — | 0 | 1 | 1 | 1 | — | 0 | 2 | 18 | 16 |
| District of Columbia | — | 1 | 6 | 67 | 85 | — | 0 | 1 | 2 | 2 | — | 0 | 0 | — | 14 |
| Florida | 9 | 12 | 45 | 781 | 1,089 | 1 | 1 | 6 | 87 | 95 | 1 | 5 | 11 | 276 | 250 |
| Georgia | 2 | 12 | 61 | 708 | 1,138 | — | 1 | 4 | 52 | 91 | — | 1 | 5 | 70 | 66 |
| Maryland | 4 | 7 | 21 | 398 | 492 | — | 0 | 4 | 30 | 27 | 1 | 2 | 11 | 141 | 162 |
| North Carolina | — | 0 | 0 | — | — | N | 0 | 0 | N | N | 1 | 2 | 19 | 182 | 90 |
| South Carolina | 8 | 7 | 27 | 409 | 439 | — | 0 | 2 | 25 | 19 | — | 0 | 3 | 41 | 22 |
| Virginia | — | 0 | 3 | 17 | — | — | 0 | 3 | 17 | 37 | — | 2 | 7 | 113 | 123 |
| West Virginia | — | 4 | 16 | 216 | 329 | — | 0 | 1 | 10 | 16 | — | 0 | 4 | 45 | 27 |
| E.S. Central | 7 | 24 | 51 | 1,294 | 1,459 | 1 | 1 | 6 | 95 | 95 | 1 | 5 | 19 | 315 | 193 |
| Alabama | — | 3 | 10 | 192 | 182 | — | 0 | 2 | 16 | 18 | — | 1 | 5 | 63 | 41 |
| Kentucky | — | 2 | 10 | 157 | 255 | — | 0 | 2 | 9 | 13 | — | 1 | 8 | 81 | 50 |
| Mississippi | — | 4 | 13 | 231 | 233 | — | 0 | 2 | 22 | 18 | — | 0 | 2 | 30 | 19 |
| Tennessee | 7 | 12 | 28 | 714 | 789 | 1 | 1 | 4 | 48 | 46 | 1 | 2 | 12 | 141 | 83 |
| W.S. Central | 4 | 35 | 305 | 1,785 | 2,325 | 1 | 3 | 20 | 179 | 189 | 4 | 6 | 29 | 337 | 240 |
| Arkansas | — | 4 | 30 | 222 | 252 | — | 0 | 2 | 21 | 11 | — | 0 | 5 | 35 | 24 |
| Louisiana | 4 | 5 | 23 | 307 | 358 | — | 0 | 3 | 24 | 25 | — | 1 | 4 | 51 | 29 |
| Oklahoma | — | 0 | 0 | — | — | 1 | 0 | 2 | 25 | 21 | — | 0 | 10 | 30 | 19 |
| Texas | — | 25 | 263 | 1,256 | 1,715 | — | 2 | 18 | 109 | 132 | 4 | 4 | 24 | 221 | 168 |
| Mountain | 8 | 26 | 81 | 1,539 | 2,012 | — | 2 | 7 | 84 | 116 | 1 | 2 | 12 | 149 | 190 |
| Arizona | 8 | 10 | 41 | 695 | 786 | — | 1 | 6 | 38 | 44 | — | 1 | 4 | 55 | 69 |
| Colorado | — | 7 | 24 | 361 | 504 | — | 0 | 2 | 15 | 26 | 1 | 0 | 7 | 25 | 48 |
| Idaho | N | 0 | 0 | N | N | — | 0 | 1 | 6 | 4 | — | 0 | 2 | 12 | 12 |
| Montana | — | 1 | 4 | 37 | 31 | — | 0 | 1 | 1 | 1 | — | 0 | 1 | 4 | 9 |
| Nevada | — | 3 | 7 | 123 | 139 | — | 0 | 2 | 6 | 5 | — | 0 | 3 | 22 | 19 |
| New Mexico | — | 4 | 16 | 275 | 328 | — | 0 | 3 | 13 | 12 | — | 0 | 1 | 6 | 11 |
| Utah | — | 0 | 11 | 33 | 202 | — | 0 | 1 | 3 | 23 | — | 0 | 2 | 24 | 22 |
| Wyoming | — | 0 | 3 | 15 | 22 | — | 0 | 1 | 2 | 1 | — | 0 | 1 | 1 | — |
| Pacific | — | 3 | 8 | 158 | 186 | — | 0 | 3 | 18 | 22 | — | 6 | 16 | 338 | 273 |
| Alaska | — | 1 | 5 | 80 | 105 | — | 0 | 2 | 8 | 15 | — | 0 | 1 | 2 | 1 |
| California | N | 0 | 0 | N | N | N | 0 | 0 | N | N | — | 5 | 10 | 255 | 203 |
| Hawaii | — | 1 | 6 | 78 | 81 | — | 0 | 2 | 10 | 7 | — | 0 | 1 | 7 | 7 |
| Oregon | N | 0 | 0 | N | N | N | 0 | 0 | N | N | — | 0 | 3 | 30 | 20 |
| Washington | N | 0 | 0 | N | N | N | 0 | 0 | N | N | — | 0 | 9 | 44 | 42 |
| Territories | | | | | | | | | | | | | | | |
| American Samoa | N | — | — | N | N | — | — | — | — | — | N | — | — | N | N |
| C.N.M.I. | — | — | — | — | — | — | — | — | — | — | — | — | — | — | — |
| Guam | — | 0 | 0 | — | 18 | — | 0 | 0 | — | — | — | 0 | 0 | — | — |
| Puerto Rico | — | 0 | 0 | — | — | — | 0 | 0 | — | — | — | 0 | 1 | 4 | 13 |
| U.S. Virgin Islands | — | 0 | 0 | — | — | — | 0 | 0 | — | — | — | 0 | 0 | — | — |

C.N.M.I.: Commonwealth of Northern Mariana Islands.

U: Unavailable. —: No reported cases. N: Not reportable. NN: Not Nationally Notifiable. Cum: Cumulative year-to-date counts. Med: Median. Max: Maximum.

* Case counts for reporting year 2014 are provisional and subject to change. For further information on interpretation of these data, see <http://www.cdc.gov/nndss/document/ProvisionalNationalNotifiableDiseasesSurveillanceData20100927.pdf>. Data for TB are displayed in Table IV, which appears quarterly.

† Includes drug resistant and susceptible cases of Invasive Pneumococcal Disease. This condition was previously named Streptococcus pneumoniae invasive disease and cases were reported to CDC using different event codes to specify whether the cases were drug resistant or in a defined age group, such as <5 years. Since 2010, case notifications for this condition were consolidated under one event code for Invasive pneumococcal disease.

Morbidity and Mortality Weekly Report

TABLE II. (Continued) Provisional cases of selected notifiable diseases, United States, weeks ending December 27, 2014, and December 28, 2013 (52nd week)* (Export data)

| Reporting area | Lyme disease | | | | | Malaria | | | | | Meningococcal disease, invasive† All serogroups | | | | |
|----------------------|--------------|-------------------|-------|----------|----------|--------------|-------------------|-----|----------|----------|--|-------------------|-----|----------|----------|
| | Current week | Previous 52 weeks | | Cum 2014 | Cum 2013 | Current week | Previous 52 weeks | | Cum 2014 | Cum 2013 | Current week | Previous 52 weeks | | Cum 2014 | Cum 2013 |
| | | Med | Max | | | | Med | Max | | | | Med | Max | | |
| United States | 51 | 385 | 1,791 | 29,081 | 36,307 | 2 | 25 | 51 | 1,398 | 1,594 | 3 | 7 | 24 | 386 | 556 |
| New England | — | 103 | 691 | 9,642 | 12,892 | — | 2 | 7 | 94 | 130 | 1 | 0 | 3 | 14 | 25 |
| Connecticut | — | 19 | 170 | 2,030 | 2,925 | — | 0 | 2 | 8 | 20 | — | 0 | 1 | 1 | 3 |
| Maine | — | 14 | 90 | 1,322 | 1,373 | — | 0 | 1 | 6 | 10 | 1 | 0 | 1 | 2 | 4 |
| Massachusetts | — | 41 | 388 | 4,332 | 5,290 | — | 1 | 5 | 50 | 71 | — | 0 | 1 | 10 | 11 |
| New Hampshire | — | 5 | 62 | 619 | 1,687 | — | 0 | 2 | 7 | 10 | — | 0 | 0 | — | 2 |
| Rhode Island | — | 8 | 83 | 762 | 724 | — | 0 | 3 | 19 | 14 | — | 0 | 1 | 1 | 1 |
| Vermont | — | 8 | 48 | 577 | 893 | — | 0 | 2 | 4 | 5 | — | 0 | 1 | — | 4 |
| Mid. Atlantic | 44 | 195 | 921 | 14,162 | 14,139 | — | 7 | 23 | 394 | 418 | — | 1 | 3 | 40 | 82 |
| New Jersey | — | 39 | 191 | 2,821 | 3,766 | — | 1 | 5 | 71 | 93 | — | 0 | 1 | 8 | 20 |
| New York (Upstate) | 16 | 47 | 226 | 2,891 | 3,872 | — | 1 | 4 | 58 | 58 | — | 0 | 3 | 8 | 24 |
| New York City | 1 | 3 | 441 | 747 | 743 | — | 3 | 16 | 188 | 196 | — | 0 | 2 | 11 | 16 |
| Pennsylvania | 27 | 78 | 602 | 7,703 | 5,758 | — | 1 | 5 | 77 | 71 | — | 0 | 2 | 13 | 22 |
| E.N. Central | — | 13 | 128 | 1,633 | 2,580 | — | 2 | 8 | 115 | 149 | — | 1 | 4 | 46 | 52 |
| Illinois | — | 1 | 20 | 197 | 337 | — | 1 | 4 | 43 | 64 | — | 0 | 2 | 11 | 10 |
| Indiana | — | 0 | 11 | 76 | 110 | — | 0 | 3 | 17 | 20 | — | 0 | 1 | 4 | 15 |
| Michigan | — | 2 | 13 | 142 | 168 | — | 0 | 2 | 12 | 21 | — | 0 | 2 | 11 | 4 |
| Ohio | — | 1 | 10 | 113 | 93 | — | 1 | 3 | 37 | 33 | — | 0 | 2 | 12 | 10 |
| Wisconsin | — | 10 | 97 | 1,105 | 1,872 | — | 0 | 2 | 6 | 11 | — | 0 | 1 | 8 | 13 |
| W.N. Central | — | 3 | 22 | 257 | 2,667 | 1 | 1 | 4 | 64 | 109 | — | 0 | 3 | 20 | 38 |
| Iowa | — | 1 | 20 | 190 | 247 | — | 0 | 2 | 15 | 12 | — | 0 | 1 | 2 | 1 |
| Kansas | — | 0 | 2 | 16 | 34 | — | 0 | 2 | 9 | 8 | — | 0 | 1 | 1 | 3 |
| Minnesota | — | 0 | 14 | 3 | 2,340 | — | 0 | 1 | 2 | 67 | — | 0 | 1 | 5 | 12 |
| Missouri | — | 0 | 2 | 14 | 3 | 1 | 0 | 1 | 15 | 6 | — | 0 | 1 | 8 | 10 |
| Nebraska | — | 0 | 4 | 16 | 10 | — | 0 | 2 | 9 | 6 | — | 0 | 0 | — | 5 |
| North Dakota | — | 0 | 2 | 16 | 29 | — | 0 | 1 | 9 | 3 | — | 0 | 1 | 2 | 3 |
| South Dakota | — | 0 | 1 | 2 | 4 | — | 0 | 1 | 5 | 7 | — | 0 | 1 | 2 | 4 |
| S. Atlantic | 7 | 42 | 309 | 3,090 | 3,559 | — | 7 | 18 | 387 | 403 | 2 | 2 | 6 | 98 | 98 |
| Delaware | — | 6 | 24 | 390 | 509 | — | 0 | 1 | 2 | 9 | — | 0 | 1 | 1 | 2 |
| District of Columbia | — | 0 | 4 | 29 | 35 | — | 0 | 2 | 13 | 13 | — | 0 | 1 | 1 | — |
| Florida | 2 | 2 | 12 | 138 | 138 | — | 1 | 4 | 51 | 54 | 1 | 1 | 4 | 50 | 58 |
| Georgia | — | 0 | 1 | 1 | 8 | — | 1 | 5 | 72 | 67 | 1 | 0 | 2 | 13 | 12 |
| Maryland | 1 | 14 | 62 | 1,087 | 1,197 | — | 2 | 9 | 137 | 147 | — | 0 | 1 | 7 | 3 |
| North Carolina | — | 0 | 78 | 149 | 180 | — | 0 | 8 | 35 | 27 | — | 0 | 3 | 13 | 10 |
| South Carolina | — | 1 | 3 | 35 | 42 | — | 0 | 1 | 5 | 9 | — | 0 | 2 | 4 | 4 |
| Virginia | 4 | 16 | 267 | 1,135 | 1,307 | — | 1 | 5 | 70 | 75 | — | 0 | 2 | 8 | 7 |
| West Virginia | — | 1 | 14 | 126 | 143 | — | 0 | 1 | 2 | 2 | — | 0 | 1 | 1 | 2 |
| E.S. Central | — | 1 | 10 | 119 | 89 | — | 1 | 5 | 41 | 33 | — | 0 | 2 | 19 | 16 |
| Alabama | — | 0 | 7 | 57 | 24 | — | 0 | 3 | 13 | 2 | — | 0 | 1 | 7 | 5 |
| Kentucky | — | 0 | 5 | 43 | 40 | — | 0 | 2 | 10 | 9 | — | 0 | 1 | 3 | 1 |
| Mississippi | — | 0 | 1 | 2 | — | — | 0 | 1 | 1 | 3 | — | 0 | 1 | 1 | 4 |
| Tennessee | — | 0 | 3 | 17 | 25 | — | 0 | 2 | 17 | 19 | — | 0 | 2 | 8 | 6 |
| W.S. Central | — | 0 | 13 | 33 | 85 | — | 2 | 21 | 125 | 115 | — | 1 | 6 | 36 | 59 |
| Arkansas | — | 0 | 0 | — | — | — | 0 | 1 | 4 | 2 | — | 0 | 1 | 1 | 7 |
| Louisiana | — | 0 | 1 | 2 | — | — | 0 | 1 | 12 | 9 | — | 0 | 1 | 6 | 16 |
| Oklahoma | — | 0 | 2 | — | 3 | — | 0 | 3 | 9 | 14 | — | 0 | 2 | 9 | 6 |
| Texas | — | 0 | 11 | 31 | 82 | — | 1 | 19 | 100 | 90 | — | 0 | 5 | 20 | 30 |
| Mountain | — | 1 | 7 | 52 | 109 | — | 1 | 6 | 47 | 86 | — | 0 | 3 | 27 | 40 |
| Arizona | — | 0 | 5 | 20 | 32 | — | 0 | 3 | 19 | 33 | — | 0 | 2 | 9 | 12 |
| Colorado | — | 0 | 0 | — | — | — | 0 | 3 | 7 | 32 | — | 0 | 1 | 3 | 9 |
| Idaho | — | 0 | 1 | 8 | 19 | — | 0 | 1 | 3 | 5 | — | 0 | 1 | 5 | 4 |
| Montana | — | 0 | 2 | 7 | 18 | — | 0 | 1 | 2 | — | — | 0 | 1 | 4 | 1 |
| Nevada | — | 0 | 2 | 6 | 16 | — | 0 | 2 | 10 | 8 | — | 0 | 1 | 3 | 1 |
| New Mexico | — | 0 | 0 | — | 6 | — | 0 | 1 | 2 | 1 | — | 0 | 1 | 2 | 2 |
| Utah | — | 0 | 2 | 9 | 15 | — | 0 | 1 | 4 | 7 | — | 0 | 1 | 1 | 9 |
| Wyoming | — | 0 | 1 | 2 | 3 | — | 0 | 0 | — | — | — | 0 | 0 | — | 2 |
| Pacific | — | 2 | 5 | 93 | 187 | 1 | 3 | 6 | 131 | 151 | — | 1 | 7 | 86 | 146 |
| Alaska | — | 0 | 1 | 7 | 14 | — | 0 | 1 | 2 | 4 | — | 0 | 0 | — | — |
| California | — | 0 | 3 | 31 | 112 | — | 1 | 4 | 68 | 103 | — | 1 | 5 | 55 | 113 |
| Hawaii | N | 0 | 0 | N | N | — | 0 | 1 | 5 | 1 | — | 0 | 1 | 2 | 1 |
| Oregon | — | 1 | 3 | 43 | 43 | 1 | 0 | 2 | 17 | 13 | — | 0 | 3 | 18 | 12 |
| Washington | — | 0 | 4 | 12 | 18 | — | 0 | 3 | 39 | 30 | — | 0 | 4 | 11 | 20 |
| Territories | | | | | | | | | | | | | | | |
| American Samoa | N | — | — | N | N | — | — | — | — | — | — | — | — | — | — |
| C.N.M.I. | — | — | — | — | — | — | — | — | — | — | — | — | — | — | — |
| Guam | — | 0 | 0 | — | — | — | 0 | 0 | — | — | — | 0 | 0 | — | 1 |
| Puerto Rico | N | 0 | 0 | N | N | — | 0 | 1 | 1 | — | — | 0 | 1 | 1 | 1 |
| U.S. Virgin Islands | N | 0 | 0 | N | N | — | 0 | 0 | — | — | — | 0 | 0 | — | — |

C.N.M.I.: Commonwealth of Northern Mariana Islands.

U: Unavailable. —: No reported cases. N: Not reportable. NN: Not Nationally Notifiable. Cum: Cumulative year-to-date counts. Med: Median. Max: Maximum.

* Case counts for reporting year 2014 are provisional and subject to change. For further information on interpretation of these data, see <http://www.cdc.gov/nndss/document/ProvisionalNationalNotifiableDiseasesSurveillanceData201100927.pdf>. Data for TB are displayed in Table IV, which appears quarterly.

† Data for meningococcal disease, invasive caused by serogroups A, C, Y, and W-135; serogroup B; other serogroup; and unknown serogroup are available in Table I.

Morbidity and Mortality Weekly Report

TABLE II. (Continued) Provisional cases of selected notifiable diseases, United States, weeks ending December 27, 2014, and December 28, 2013 (52nd week)* (Export data)

| Reporting area | Mumps | | | | | Pertussis | | | | | Rabies, animal | | | | |
|----------------------|--------------|-------------------|-----|----------|----------|--------------|-------------------|-------|----------|----------|----------------|-------------------|-----|----------|----------|
| | Current week | Previous 52 weeks | | Cum 2014 | Cum 2013 | Current week | Previous 52 weeks | | Cum 2014 | Cum 2013 | Current week | Previous 52 weeks | | Cum 2014 | Cum 2013 |
| | | Med | Max | | | | Med | Max | | | | Med | Max | | |
| United States | 3 | 10 | 117 | 1,100 | 584 | 168 | 500 | 1,036 | 27,878 | 28,639 | 11 | 57 | 137 | 2,842 | 3,833 |
| New England | — | 0 | 2 | 7 | 79 | 11 | 18 | 45 | 1,000 | 1,147 | — | 5 | 16 | 307 | 307 |
| Connecticut | — | 0 | 0 | — | 4 | — | 1 | 6 | 65 | 61 | — | 2 | 13 | 176 | 148 |
| Maine | — | 0 | 0 | — | 1 | 11 | 7 | 30 | 507 | 332 | — | 1 | 3 | 43 | 50 |
| Massachusetts | — | 0 | 2 | 5 | 69 | — | 4 | 12 | 219 | 349 | — | 0 | 0 | — | — |
| New Hampshire | — | 0 | 2 | 2 | 1 | — | 1 | 5 | 74 | 131 | — | 0 | 2 | 15 | 30 |
| Rhode Island | — | 0 | 0 | — | 3 | — | 0 | 23 | 93 | 160 | — | 0 | 4 | 20 | 28 |
| Vermont | — | 0 | 0 | — | 1 | — | 0 | 5 | 42 | 114 | — | 1 | 4 | 53 | 51 |
| Mid. Atlantic | 1 | 2 | 25 | 174 | 146 | 31 | 35 | 73 | 1,981 | 1,903 | 4 | 7 | 15 | 361 | 742 |
| New Jersey | — | 0 | 9 | 32 | 80 | — | 6 | 15 | 280 | 406 | — | 0 | 0 | — | — |
| New York (Upstate) | 1 | 0 | 1 | 10 | 10 | 19 | 16 | 51 | 843 | 722 | 4 | 6 | 15 | 361 | 335 |
| New York City | — | 1 | 24 | 118 | 35 | — | 2 | 6 | 103 | 142 | — | 0 | 2 | — | 56 |
| Pennsylvania | — | 0 | 4 | 14 | 21 | 12 | 14 | 36 | 755 | 633 | — | 0 | 9 | — | 351 |
| E.N. Central | 1 | 5 | 107 | 774 | 50 | 34 | 89 | 164 | 4,818 | 5,111 | — | 1 | 12 | 100 | 166 |
| Illinois | — | 1 | 15 | 128 | 26 | — | 12 | 31 | 624 | 785 | — | 0 | 6 | 40 | 54 |
| Indiana | — | 0 | 3 | 23 | 4 | — | 8 | 21 | 420 | 616 | — | 0 | 4 | 4 | 10 |
| Michigan | — | 0 | 2 | 16 | 6 | 7 | 22 | 52 | 1,231 | 988 | — | 0 | 4 | 35 | 41 |
| Ohio | 1 | 2 | 97 | 545 | 12 | 26 | 25 | 82 | 1,449 | 1,464 | — | 0 | 5 | 21 | 61 |
| Wisconsin | — | 0 | 10 | 62 | 2 | 1 | 22 | 56 | 1,094 | 1,258 | N | 0 | 0 | N | N |
| W.N. Central | — | 0 | 6 | 35 | 15 | 29 | 39 | 67 | 2,029 | 2,523 | — | 2 | 8 | 122 | 223 |
| Iowa | — | 0 | 1 | 6 | 3 | — | 3 | 11 | 183 | 308 | — | 0 | 0 | — | — |
| Kansas | — | 0 | 1 | 2 | — | — | 6 | 18 | 329 | 405 | — | 1 | 5 | 56 | 60 |
| Minnesota | — | 0 | 6 | 20 | 3 | — | 11 | 27 | 507 | 865 | — | 0 | 2 | — | 62 |
| Missouri | — | 0 | 2 | 6 | 8 | 1 | 9 | 23 | 504 | 559 | — | 0 | 3 | 26 | 39 |
| Nebraska | — | 0 | 0 | — | — | 28 | 4 | 35 | 353 | 232 | — | 0 | 3 | 19 | 34 |
| North Dakota | — | 0 | 1 | 1 | 1 | — | 0 | 8 | 45 | 87 | — | 0 | 0 | — | — |
| South Dakota | — | 0 | 0 | — | — | — | 1 | 11 | 108 | 67 | — | 0 | 2 | 21 | 28 |
| S. Atlantic | 1 | 0 | 9 | 42 | 214 | 14 | 56 | 102 | 2,758 | 2,599 | — | 8 | 92 | 473 | 859 |
| Delaware | — | 0 | 0 | — | — | — | 1 | 35 | 205 | 57 | — | 0 | 0 | — | — |
| District of Columbia | — | 0 | 4 | 16 | 1 | 1 | 0 | 3 | 22 | 42 | U | 0 | 0 | U | U |
| Florida | — | 0 | 1 | 1 | 1 | 4 | 12 | 32 | 712 | 732 | — | 0 | 87 | 94 | 103 |
| Georgia | — | 0 | 0 | — | 10 | — | 6 | 17 | 321 | 317 | — | 0 | 8 | — | 302 |
| Maryland | — | 0 | 1 | 2 | 87 | 1 | 2 | 17 | 168 | 213 | — | 6 | 19 | 341 | 376 |
| North Carolina | — | 0 | 2 | 3 | 4 | 5 | 11 | 60 | 702 | 583 | — | 0 | 0 | — | — |
| South Carolina | — | 0 | 1 | 2 | 2 | — | 3 | 9 | 157 | 218 | — | 0 | 0 | — | — |
| Virginia | — | 0 | 8 | 17 | 109 | 3 | 9 | 30 | 455 | 418 | — | 0 | 0 | — | — |
| West Virginia | 1 | 0 | 0 | 1 | — | — | 0 | 3 | 16 | 19 | — | 1 | 5 | 38 | 78 |
| E.S. Central | — | 0 | 2 | 8 | 13 | 2 | 18 | 30 | 927 | 889 | — | 1 | 7 | 72 | 59 |
| Alabama | — | 0 | 1 | 2 | 4 | 1 | 5 | 13 | 277 | 200 | — | 1 | 7 | 63 | 39 |
| Kentucky | — | 0 | 1 | 2 | 2 | — | 5 | 17 | 268 | 383 | — | 0 | 2 | 8 | 15 |
| Mississippi | — | 0 | 0 | — | — | — | 1 | 5 | 68 | 59 | — | 0 | 1 | 1 | 5 |
| Tennessee | — | 0 | 1 | 4 | 7 | 1 | 5 | 16 | 314 | 247 | — | 0 | 0 | — | — |
| W.S. Central | — | 0 | 3 | 20 | 19 | 21 | 55 | 499 | 2,799 | 4,920 | 7 | 22 | 77 | 1,126 | 1,180 |
| Arkansas | — | 0 | 1 | 1 | 3 | — | 5 | 30 | 258 | 466 | — | 1 | 23 | 148 | 152 |
| Louisiana | — | 0 | 0 | — | 2 | — | 1 | 6 | 73 | 214 | — | 0 | 0 | — | 7 |
| Oklahoma | — | 0 | 2 | 4 | 1 | — | 0 | 112 | 122 | 255 | — | 1 | 17 | 96 | 84 |
| Texas | — | 0 | 3 | 15 | 13 | 21 | 47 | 353 | 2,346 | 3,985 | 7 | 18 | 72 | 882 | 937 |
| Mountain | — | 0 | 3 | 26 | 13 | 7 | 73 | 114 | 3,642 | 5,935 | — | 0 | 7 | 52 | 72 |
| Arizona | — | 0 | 2 | 9 | 1 | — | 7 | 27 | 438 | 1,440 | N | 0 | 0 | N | N |
| Colorado | — | 0 | 1 | 2 | 4 | — | 22 | 46 | 1,054 | 1,418 | — | 0 | 0 | — | — |
| Idaho | — | 0 | 3 | 11 | — | 4 | 7 | 23 | 360 | 237 | — | 0 | 2 | 10 | 27 |
| Montana | — | 0 | 0 | — | — | 3 | 8 | 25 | 475 | 663 | N | 0 | 0 | N | N |
| Nevada | — | 0 | 1 | 2 | 5 | — | 2 | 8 | 119 | 181 | — | 0 | 4 | 11 | 13 |
| New Mexico | — | 0 | 1 | 1 | 1 | — | 6 | 17 | 333 | 613 | — | 0 | 2 | 9 | 11 |
| Utah | — | 0 | 1 | 1 | 2 | — | 17 | 38 | 810 | 1,308 | — | 0 | 4 | 22 | 12 |
| Wyoming | — | 0 | 0 | — | — | — | 0 | 6 | 53 | 75 | — | 0 | 1 | — | 9 |
| Pacific | — | 0 | 5 | 14 | 35 | 19 | 117 | 331 | 7,924 | 3,612 | — | 5 | 21 | 229 | 225 |
| Alaska | — | 0 | 1 | 1 | — | 5 | 2 | 17 | 158 | 317 | — | 0 | 1 | 3 | 7 |
| California | — | 0 | 5 | 6 | 30 | — | 102 | 305 | 6,870 | 2,011 | — | 3 | 21 | 212 | 196 |
| Hawaii | — | 0 | 1 | 1 | — | — | 0 | 4 | 36 | 50 | — | 0 | 0 | — | — |
| Oregon | — | 0 | 1 | 1 | 3 | 4 | 8 | 16 | 397 | 486 | — | 0 | 3 | 14 | 10 |
| Washington | — | 0 | 1 | 5 | 2 | 10 | 7 | 50 | 463 | 748 | — | 0 | 12 | — | 12 |
| Territories | — | — | — | — | — | — | — | — | — | — | — | — | — | — | — |
| American Samoa | — | — | — | — | — | — | — | — | — | — | N | — | — | N | N |
| C.N.M.I. | — | — | — | — | — | — | — | — | — | — | — | — | — | — | — |
| Guam | — | 0 | 0 | — | 8 | — | 0 | 0 | — | — | — | 0 | 0 | — | — |
| Puerto Rico | — | 0 | 0 | — | 3 | — | 0 | 2 | 9 | 34 | — | 1 | 5 | 47 | 54 |
| U.S. Virgin Islands | — | 0 | 0 | — | — | — | 0 | 0 | — | — | — | 0 | 0 | — | — |

C.N.M.I.: Commonwealth of Northern Mariana Islands.

U: Unavailable. —: No reported cases. N: Not reportable. NN: Not Nationally Notifiable. Cum: Cumulative year-to-date counts. Med: Median. Max: Maximum.

* Case counts for reporting year 2014 are provisional and subject to change. For further information on interpretation of these data, see <http://www.cdc.gov/nndss/document/ProvisionalNationalNotifiableDiseasesSurveillanceData20100927.pdf>. Data for TB are displayed in Table IV, which appears quarterly.

Morbidity and Mortality Weekly Report

TABLE II. (Continued) Provisional cases of selected notifiable diseases, United States, weeks ending December 27, 2014, and December 28, 2013 (52nd week)* (Export data)

| Reporting area | Salmonellosis | | | | | Shiga toxin-producing <i>E. coli</i> (STEC) [†] | | | | | Shigellosis | | | | |
|----------------------|---------------|-------------------|-------|----------|----------|--|-------------------|-----|----------|----------|--------------|-------------------|-----|----------|----------|
| | Current week | Previous 52 weeks | | Cum 2014 | Cum 2013 | Current week | Previous 52 weeks | | Cum 2014 | Cum 2013 | Current week | Previous 52 weeks | | Cum 2014 | Cum 2013 |
| | | Med | Max | | | | Med | Max | | | | Med | Max | | |
| United States | 221 | 830 | 1,574 | 46,917 | 50,634 | 11 | 92 | 194 | 4,987 | 6,663 | 100 | 383 | 741 | 18,029 | 12,729 |
| New England | 1 | 38 | 86 | 2,090 | 2,116 | — | 3 | 16 | 209 | 256 | — | 6 | 14 | 301 | 515 |
| Connecticut | — | 8 | 23 | 426 | 426 | — | 1 | 4 | 55 | 71 | — | 1 | 5 | 59 | 57 |
| Maine | — | 2 | 6 | 126 | 131 | — | 0 | 4 | 32 | 27 | — | 0 | 3 | 29 | 5 |
| Massachusetts | — | 21 | 52 | 1,146 | 1,143 | — | 1 | 6 | 89 | 108 | — | 3 | 9 | 170 | 174 |
| New Hampshire | — | 3 | 8 | 170 | 213 | — | 0 | 2 | 14 | 27 | — | 0 | 2 | 13 | 8 |
| Rhode Island | 1 | 2 | 12 | 131 | 128 | — | 0 | 2 | 4 | 3 | — | 0 | 7 | 26 | 268 |
| Vermont | — | 1 | 7 | 91 | 75 | — | 0 | 2 | 15 | 20 | — | 0 | 2 | 4 | 3 |
| Mid. Atlantic | 34 | 78 | 185 | 4,548 | 5,112 | 5 | 9 | 26 | 503 | 725 | 26 | 18 | 43 | 999 | 871 |
| New Jersey | — | 16 | 50 | 974 | 1,062 | — | 2 | 8 | 93 | 137 | — | 3 | 13 | 210 | 137 |
| New York (Upstate) | 14 | 23 | 76 | 1,275 | 1,298 | 3 | 3 | 15 | 190 | 221 | 6 | 4 | 29 | 246 | 273 |
| New York City | 12 | 18 | 35 | 929 | 1,131 | 1 | 1 | 5 | 68 | 88 | 19 | 7 | 22 | 372 | 315 |
| Pennsylvania | 8 | 21 | 68 | 1,370 | 1,621 | 1 | 3 | 9 | 152 | 279 | 1 | 3 | 14 | 171 | 146 |
| E.N. Central | 12 | 91 | 198 | 4,874 | 5,561 | 2 | 11 | 35 | 698 | 1,031 | 13 | 55 | 120 | 3,039 | 1,348 |
| Illinois | — | 29 | 65 | 1,610 | 1,783 | — | 3 | 11 | 172 | 279 | — | 11 | 34 | 659 | 312 |
| Indiana | — | 11 | 36 | 586 | 705 | — | 1 | 9 | 91 | 121 | — | 23 | 72 | 1,174 | 117 |
| Michigan | — | 17 | 56 | 997 | 997 | — | 2 | 8 | 132 | 184 | 1 | 4 | 19 | 288 | 169 |
| Ohio | 12 | 23 | 46 | 1,190 | 1,181 | 2 | 3 | 12 | 202 | 222 | 8 | 11 | 22 | 600 | 714 |
| Wisconsin | — | 10 | 25 | 491 | 895 | — | 1 | 12 | 101 | 225 | 4 | 5 | 20 | 318 | 36 |
| W.N. Central | 12 | 38 | 79 | 2,235 | 3,235 | — | 10 | 35 | 659 | 1,009 | 15 | 47 | 93 | 2,422 | 870 |
| Iowa | 1 | 10 | 24 | 514 | 575 | — | 2 | 14 | 215 | 171 | — | 3 | 14 | 206 | 342 |
| Kansas | — | 8 | 21 | 418 | 423 | — | 1 | 7 | 84 | 89 | — | 1 | 4 | 51 | 40 |
| Minnesota | — | 0 | 7 | — | 799 | — | 0 | 0 | — | 305 | — | 0 | 6 | — | 132 |
| Missouri | 11 | 16 | 36 | 815 | 847 | — | 4 | 14 | 193 | 276 | 14 | 24 | 63 | 1,330 | 89 |
| Nebraska | — | 4 | 13 | 249 | 307 | — | 2 | 9 | 105 | 82 | 1 | 3 | 18 | 206 | 63 |
| North Dakota | — | 2 | 8 | 85 | 102 | — | 0 | 3 | 23 | 43 | — | 0 | 2 | 20 | 18 |
| South Dakota | — | 2 | 12 | 154 | 182 | — | 0 | 4 | 39 | 43 | — | 11 | 32 | 609 | 186 |
| S. Atlantic | 73 | 234 | 551 | 13,605 | 13,710 | — | 10 | 24 | 526 | 549 | 22 | 85 | 160 | 4,436 | 2,483 |
| Delaware | — | 2 | 14 | 153 | 121 | — | 0 | 2 | 14 | 15 | — | 1 | 4 | 70 | 14 |
| District of Columbia | — | 0 | 5 | 38 | 52 | — | 0 | 1 | 5 | 5 | — | 1 | 4 | 47 | 15 |
| Florida | 57 | 104 | 226 | 5,916 | 6,133 | — | 3 | 9 | 170 | 121 | 14 | 45 | 95 | 2,373 | 1,018 |
| Georgia | 6 | 31 | 91 | 2,074 | 2,281 | — | 1 | 7 | 82 | 121 | 5 | 16 | 27 | 838 | 886 |
| Maryland | 4 | 14 | 50 | 869 | 862 | — | 1 | 5 | 76 | 64 | 1 | 5 | 12 | 250 | 107 |
| North Carolina | 4 | 30 | 190 | 1,975 | 1,877 | — | 1 | 4 | 45 | 71 | 1 | 4 | 119 | 498 | 201 |
| South Carolina | — | 18 | 79 | 1,373 | 1,139 | — | 0 | 2 | 15 | 8 | — | 2 | 13 | 148 | 120 |
| Virginia | 2 | 18 | 58 | 1,053 | 1,051 | — | 2 | 6 | 103 | 109 | 1 | 4 | 15 | 201 | 115 |
| West Virginia | — | 3 | 11 | 154 | 194 | — | 0 | 2 | 16 | 35 | — | 0 | 2 | 11 | 7 |
| E.S. Central | 2 | 57 | 152 | 3,566 | 3,397 | 1 | 4 | 15 | 298 | 327 | 2 | 31 | 59 | 1,652 | 1,264 |
| Alabama | — | 18 | 54 | 1,096 | 1,086 | — | 0 | 3 | 40 | 53 | — | 6 | 27 | 396 | 313 |
| Kentucky | — | 10 | 27 | 548 | 526 | — | 1 | 7 | 86 | 110 | — | 4 | 15 | 246 | 63 |
| Mississippi | — | 13 | 56 | 966 | 917 | — | 0 | 3 | 31 | 30 | — | 4 | 11 | 200 | 222 |
| Tennessee | 2 | 15 | 40 | 956 | 868 | 1 | 2 | 9 | 141 | 134 | 2 | 16 | 31 | 810 | 666 |
| W.S. Central | 37 | 141 | 724 | 6,859 | 7,845 | 2 | 13 | 50 | 710 | 813 | 11 | 62 | 463 | 3,135 | 3,320 |
| Arkansas | 1 | 12 | 29 | 654 | 706 | — | 2 | 5 | 80 | 76 | 3 | 7 | 197 | 769 | 273 |
| Louisiana | 3 | 15 | 50 | 1,069 | 1,282 | — | 0 | 2 | 15 | 24 | 1 | 2 | 10 | 136 | 451 |
| Oklahoma | 5 | 14 | 151 | 768 | 911 | 2 | 2 | 12 | 118 | 107 | 7 | 1 | 41 | 98 | 210 |
| Texas | 28 | 89 | 543 | 4,368 | 4,946 | — | 9 | 40 | 497 | 606 | — | 43 | 393 | 2,132 | 2,386 |
| Mountain | 2 | 51 | 92 | 2,665 | 3,133 | 1 | 8 | 23 | 447 | 791 | 2 | 13 | 23 | 649 | 770 |
| Arizona | 1 | 17 | 40 | 987 | 1,010 | — | 1 | 5 | 66 | 246 | 2 | 6 | 18 | 333 | 428 |
| Colorado | — | 10 | 27 | 501 | 631 | — | 1 | 9 | 50 | 186 | — | 1 | 6 | 73 | 113 |
| Idaho | 1 | 3 | 9 | 171 | 134 | — | 2 | 9 | 112 | 106 | — | 0 | 3 | 12 | 11 |
| Montana | — | 2 | 8 | 137 | 93 | 1 | 0 | 4 | 39 | 49 | — | 0 | 7 | 35 | 69 |
| Nevada | — | 3 | 8 | 162 | 522 | — | 0 | 5 | 32 | 59 | — | 0 | 6 | 35 | 54 |
| New Mexico | — | 6 | 16 | 303 | 350 | — | 1 | 6 | 45 | 30 | — | 1 | 6 | 55 | 60 |
| Utah | — | 6 | 17 | 358 | 322 | — | 1 | 6 | 86 | 84 | — | 1 | 4 | 34 | 25 |
| Wyoming | — | 0 | 4 | 46 | 71 | — | 0 | 3 | 17 | 31 | — | 0 | 6 | 72 | 10 |
| Pacific | 48 | 124 | 243 | 6,475 | 6,525 | — | 17 | 59 | 937 | 1,162 | 9 | 26 | 59 | 1,396 | 1,288 |
| Alaska | 3 | 1 | 6 | 72 | 87 | — | 0 | 0 | — | — | — | 0 | 1 | 5 | 1 |
| California | 41 | 97 | 209 | 5,045 | 5,043 | — | 10 | 26 | 522 | 623 | 9 | 21 | 50 | 1,189 | 1,068 |
| Hawaii | — | 6 | 15 | 301 | 349 | — | 0 | 4 | 20 | 28 | — | 0 | 2 | 19 | 42 |
| Oregon | 3 | 7 | 17 | 385 | 375 | — | 2 | 9 | 168 | 189 | — | 1 | 6 | 48 | 55 |
| Washington | 1 | 14 | 47 | 672 | 671 | — | 1 | 33 | 227 | 322 | — | 2 | 12 | 135 | 122 |
| Territories | | | | | | | | | | | | | | | |
| American Samoa | — | — | — | — | — | — | — | — | — | — | — | — | — | — | — |
| C.N.M.I. | — | — | — | — | — | — | — | — | — | — | — | — | — | — | — |
| Guam | — | 0 | 0 | — | 18 | — | 0 | 0 | — | 82 | — | 0 | 0 | — | 7 |
| Puerto Rico | — | 8 | 28 | 469 | 586 | — | 0 | 2 | 4 | 7 | — | 0 | 2 | 14 | 4 |
| U.S. Virgin Islands | — | 0 | 0 | — | — | — | 0 | 0 | — | — | — | 0 | 0 | — | — |

C.N.M.I.: Commonwealth of Northern Mariana Islands.

U: Unavailable. —: No reported cases. N: Not reportable. NN: Not Nationally Notifiable. Cum: Cumulative year-to-date counts. Med: Median. Max: Maximum.

* Case counts for reporting year 2014 are provisional and subject to change. For further information on interpretation of these data, see <http://www.cdc.gov/nndss/document/ProvisionalNationalNotifiableDiseasesSurveillanceData20100927.pdf>. Data for TB are displayed in Table IV, which appears quarterly.

† Includes *E. coli* O157:H7; Shiga toxin-positive, serogroup non-O157; and Shiga toxin-positive, not serogrouped.

Morbidity and Mortality Weekly Report

TABLE II. (Continued) Provisional cases of selected notifiable diseases, United States, weeks ending December 27, 2014, and December 28, 2013 (52nd week)* (Export data)

| Reporting area | Spotted Fever Rickettsiosis (including RMSF)† | | | | | | | | | | Syphilis, primary and secondary | | | | |
|----------------------|---|-------------------|----|----------|----------|--------------|-------------------|-----|----------|----------|---------------------------------|-------------------|-----|----------|----------|
| | Confirmed | | | | | Probable | | | | | | | | | |
| | Current week | Previous 52 weeks | | Cum 2014 | Cum 2013 | Current week | Previous 52 weeks | | Cum 2014 | Cum 2013 | Current week | Previous 52 weeks | | Cum 2014 | Cum 2013 |
| | Med | Max | | | | Med | Max | | | | Med | Max | | | |
| United States | — | 1 | 10 | 101 | 172 | 4 | 56 | 238 | 3,266 | 3,181 | 54 | 357 | 433 | 17,628 | 17,207 |
| New England | — | 0 | 1 | 1 | 1 | — | 0 | 1 | 11 | 8 | — | 8 | 17 | 447 | 502 |
| Connecticut | — | 0 | 0 | — | — | — | 0 | 1 | 1 | — | — | 1 | 5 | 76 | 56 |
| Maine | — | 0 | 0 | — | — | — | 0 | 1 | 3 | 2 | — | 0 | 4 | 12 | 10 |
| Massachusetts | — | 0 | 0 | — | — | — | 0 | 1 | 6 | 1 | — | 5 | 13 | 260 | 360 |
| New Hampshire | — | 0 | 1 | 1 | 1 | — | 0 | 1 | 1 | 3 | — | 0 | 3 | 29 | 28 |
| Rhode Island | — | 0 | 0 | — | — | — | 0 | 0 | — | 2 | — | 1 | 5 | 68 | 45 |
| Vermont | — | 0 | 0 | — | — | — | 0 | 0 | — | — | — | 0 | 1 | 2 | 3 |
| Mid. Atlantic | — | 0 | 2 | 4 | 4 | — | 2 | 8 | 93 | 82 | 10 | 47 | 73 | 2,333 | 2,163 |
| New Jersey | — | 0 | 0 | — | 2 | — | 1 | 7 | 57 | 40 | — | 5 | 13 | 241 | 233 |
| New York (Upstate) | — | 0 | 2 | 3 | 1 | — | 0 | 6 | 18 | 24 | 6 | 7 | 48 | 380 | 298 |
| New York City | — | 0 | 0 | — | 1 | — | 0 | 2 | 10 | 2 | 1 | 24 | 38 | 1,222 | 1,161 |
| Pennsylvania | — | 0 | 1 | 1 | — | — | 0 | 2 | 8 | 16 | 3 | 9 | 19 | 490 | 471 |
| E.N. Central | — | 0 | 2 | 5 | 7 | 1 | 2 | 12 | 144 | 164 | — | 32 | 59 | 1,565 | 2,031 |
| Illinois | — | 0 | 1 | 3 | 3 | — | 1 | 10 | 92 | 99 | — | 10 | 20 | 542 | 798 |
| Indiana | — | 0 | 2 | 2 | 2 | — | 0 | 4 | 31 | 30 | — | 3 | 8 | 167 | 215 |
| Michigan | — | 0 | 0 | — | — | — | 0 | 1 | 2 | 3 | — | 6 | 17 | 302 | 487 |
| Ohio | — | 0 | 0 | — | 1 | 1 | 0 | 2 | 12 | 22 | — | 9 | 17 | 481 | 436 |
| Wisconsin | — | 0 | 0 | — | 1 | — | 0 | 2 | 7 | 10 | — | 1 | 5 | 73 | 95 |
| W.N. Central | — | 0 | 2 | 12 | 9 | — | 2 | 21 | 288 | 281 | 2 | 16 | 29 | 771 | 698 |
| Iowa | — | 0 | 0 | — | — | — | 0 | 2 | 10 | 8 | — | 1 | 5 | 63 | 106 |
| Kansas | — | 0 | 0 | — | — | — | 0 | 0 | — | — | — | 1 | 4 | 61 | 51 |
| Minnesota | — | 0 | 0 | — | 1 | — | 0 | 0 | — | 14 | — | 4 | 10 | 229 | 193 |
| Missouri | — | 0 | 1 | 5 | 2 | — | 2 | 19 | 265 | 241 | 2 | 6 | 13 | 321 | 251 |
| Nebraska | — | 0 | 1 | 4 | 5 | — | 0 | 2 | 10 | 10 | — | 1 | 3 | 36 | 41 |
| North Dakota | — | 0 | 1 | 2 | — | — | 0 | 1 | 1 | 2 | — | 0 | 2 | 13 | 12 |
| South Dakota | — | 0 | 1 | 1 | 1 | — | 0 | 1 | 2 | 6 | — | 1 | 6 | 48 | 44 |
| S. Atlantic | — | 0 | 4 | 37 | 107 | 1 | 10 | 92 | 908 | 865 | 13 | 90 | 215 | 4,384 | 4,043 |
| Delaware | — | 0 | 0 | — | — | — | 0 | 3 | 24 | 11 | 1 | 0 | 9 | 46 | 52 |
| District of Columbia | — | 0 | 0 | — | 5 | — | 0 | 0 | — | 1 | U | 0 | 0 | U | U |
| Florida | — | 0 | 1 | 1 | 4 | — | 0 | 3 | 36 | 20 | — | 31 | 49 | 1,592 | 1,513 |
| Georgia | — | 0 | 3 | 18 | 81 | — | 0 | 0 | — | — | 7 | 22 | 151 | 1,137 | 1,017 |
| Maryland | — | 0 | 1 | 3 | — | 1 | 0 | 3 | 18 | 8 | — | 8 | 14 | 406 | 456 |
| North Carolina | — | 0 | 2 | 10 | 11 | — | 3 | 66 | 453 | 415 | 1 | 13 | 28 | 651 | 404 |
| South Carolina | — | 0 | 1 | 1 | 1 | — | 0 | 4 | 30 | 59 | 3 | 4 | 10 | 240 | 271 |
| Virginia | — | 0 | 1 | 4 | 4 | — | 4 | 23 | 342 | 346 | 1 | 5 | 18 | 287 | 315 |
| West Virginia | — | 0 | 0 | — | 1 | — | 0 | 3 | 5 | 5 | — | 0 | 2 | 25 | 15 |
| E.S. Central | — | 0 | 4 | 27 | 16 | 1 | 11 | 52 | 822 | 897 | 1 | 13 | 30 | 673 | 597 |
| Alabama | — | 0 | 2 | 8 | 1 | — | 3 | 12 | 207 | 254 | — | 3 | 8 | 143 | 183 |
| Kentucky | — | 0 | 0 | — | 2 | — | 1 | 5 | 51 | 68 | — | 3 | 8 | 145 | 122 |
| Mississippi | — | 0 | 1 | 5 | 1 | — | 0 | 5 | 34 | 38 | — | 3 | 27 | 194 | 78 |
| Tennessee | — | 0 | 2 | 14 | 12 | 1 | 5 | 42 | 530 | 537 | 1 | 3 | 10 | 191 | 214 |
| W.S. Central | — | 0 | 1 | 5 | 15 | 1 | 16 | 99 | 973 | 794 | 18 | 45 | 64 | 2,331 | 2,193 |
| Arkansas | — | 0 | 1 | 1 | 4 | 1 | 13 | 57 | 734 | 476 | 18 | 1 | 9 | 121 | 177 |
| Louisiana | — | 0 | 0 | — | — | — | 0 | 2 | 17 | 5 | — | 9 | 22 | 488 | 423 |
| Oklahoma | — | 0 | 1 | 4 | 10 | — | 0 | 55 | 133 | 231 | — | 2 | 9 | 130 | 118 |
| Texas | — | 0 | 0 | — | 1 | — | 1 | 16 | 89 | 82 | — | 30 | 50 | 1,592 | 1,475 |
| Mountain | — | 0 | 1 | 3 | 11 | — | 0 | 2 | 15 | 73 | — | 24 | 33 | 1,188 | 828 |
| Arizona | — | 0 | 0 | — | 9 | — | 0 | 2 | 7 | 54 | — | 10 | 22 | 515 | 287 |
| Colorado | — | 0 | 0 | — | — | — | 0 | 0 | — | 6 | — | 3 | 9 | 173 | 163 |
| Idaho | — | 0 | 0 | — | 1 | — | 0 | 0 | — | — | — | 0 | 2 | 10 | 15 |
| Montana | — | 0 | 1 | 1 | — | — | 0 | 1 | 3 | 2 | — | 0 | 2 | 11 | 5 |
| Nevada | — | 0 | 0 | — | — | — | 0 | 1 | 1 | 1 | — | 6 | 20 | 339 | 205 |
| New Mexico | — | 0 | 1 | 1 | 1 | — | 0 | 1 | 1 | 3 | — | 2 | 6 | 111 | 78 |
| Utah | — | 0 | 1 | 1 | — | — | 0 | 1 | 3 | 5 | — | 0 | 3 | 28 | 74 |
| Wyoming | — | 0 | 0 | — | — | — | 0 | 0 | — | 2 | — | 0 | 1 | 1 | 1 |
| Pacific | — | 0 | 1 | 7 | 2 | — | 0 | 2 | 12 | 17 | 10 | 80 | 106 | 3,936 | 4,152 |
| Alaska | N | 0 | 0 | N | N | N | 0 | 0 | N | N | — | 0 | 2 | 16 | 23 |
| California | — | 0 | 1 | 6 | 1 | — | 0 | 1 | 9 | 14 | 7 | 71 | 96 | 3,465 | 3,532 |
| Hawaii | N | 0 | 0 | N | N | N | 0 | 0 | N | N | — | 1 | 5 | 61 | 46 |
| Oregon | — | 0 | 1 | 1 | 1 | — | 0 | 1 | 3 | 1 | 1 | 5 | 12 | 251 | 267 |
| Washington | — | 0 | 0 | — | — | — | 0 | 2 | — | 2 | 2 | 3 | 10 | 143 | 284 |
| Territories | | | | | | | | | | | | | | | |
| American Samoa | N | — | — | N | N | N | — | — | N | N | — | — | — | — | — |
| C.N.M.I. | — | — | — | — | — | — | — | — | — | — | — | — | — | — | — |
| Guam | N | 0 | 0 | N | N | N | 0 | 0 | N | N | — | 0 | 0 | — | — |
| Puerto Rico | N | 0 | 0 | N | N | N | 0 | 0 | N | N | — | 8 | 31 | 464 | 385 |
| U.S. Virgin Islands | N | 0 | 0 | N | N | N | 0 | 0 | N | N | — | 0 | 1 | 1 | 1 |

C.N.M.I.: Commonwealth of Northern Mariana Islands.

U: Unavailable. —: No reported cases. N: Not reportable. NN: Not Nationally Notifiable. Cum: Cumulative year-to-date counts. Med: Median. Max: Maximum.

* Case counts for reporting year 2014 are provisional and subject to change. For further information on interpretation of these data, see <http://www.cdc.gov/nndss/document/ProvisionalNationalNotifiableDiseasesSurveillanceData20100927.pdf>. Data for TB are displayed in Table IV, which appears quarterly.

† Illnesses with similar clinical presentation that result from Spotted fever group rickettsia infections are reported as Spotted fever rickettsioses. Rocky Mountain spotted fever (RMSF) caused by *Rickettsia rickettsii*, is the most common and well-known spotted fever.

TABLE II. (Continued) Provisional cases of selected notifiable diseases, United States, weeks ending December 27, 2014, and December 28, 2013 (52nd week)* (Export data)

| Reporting area | West Nile virus disease [†] | | | | | | | | | | | | | | |
|----------------------|--------------------------------------|-------------------|-----|----------|----------|---------------|-------------------|-----|----------|----------|-------------------------------|-------------------|----|----------|----------|
| | Varicella (chickenpox) | | | | | Neuroinvasive | | | | | Nonneuroinvasive [‡] | | | | |
| | Current week | Previous 52 weeks | | Cum 2014 | Cum 2013 | Current week | Previous 52 weeks | | Cum 2014 | Cum 2013 | Current week | Previous 52 weeks | | Cum 2014 | Cum 2013 |
| | Med | Max | | | | Med | Max | | | | Med | Max | | | |
| United States | 47 | 179 | 274 | 9,041 | 11,359 | — | 1 | 127 | 1,227 | 1,267 | — | 1 | 98 | 836 | 1,202 |
| New England | 2 | 19 | 39 | 999 | 1,116 | — | 0 | 2 | 8 | 11 | — | 0 | 2 | 4 | 5 |
| Connecticut | — | 4 | 8 | 182 | 223 | — | 0 | 2 | 3 | 1 | — | 0 | 2 | 3 | 3 |
| Maine | 2 | 3 | 11 | 202 | 140 | — | 0 | 0 | — | — | — | 0 | 0 | — | — |
| Massachusetts | — | 8 | 18 | 412 | 510 | — | 0 | 1 | 5 | 7 | — | 0 | 1 | 1 | 1 |
| New Hampshire | — | 1 | 5 | 57 | 104 | — | 0 | 0 | — | 1 | — | 0 | 0 | — | — |
| Rhode Island | — | 0 | 3 | 29 | 39 | — | 0 | 0 | — | 1 | — | 0 | 0 | — | — |
| Vermont | — | 1 | 11 | 117 | 100 | — | 0 | 0 | — | 1 | — | 0 | 0 | — | 1 |
| Mid. Atlantic | 7 | 20 | 37 | 1,010 | 1,204 | — | 0 | 7 | 22 | 34 | — | 0 | 3 | 14 | 21 |
| New Jersey | — | 4 | 14 | 227 | 419 | — | 0 | 1 | 2 | 10 | — | 0 | 1 | 2 | 2 |
| New York (Upstate) | N | 0 | 0 | N | N | — | 0 | 0 | — | 10 | — | 0 | 2 | 8 | 12 |
| New York City | — | 0 | 0 | — | — | — | 0 | 3 | 9 | 8 | — | 0 | 2 | 3 | 2 |
| Pennsylvania | 7 | 16 | 29 | 783 | 785 | — | 0 | 4 | 11 | 6 | — | 0 | 1 | 1 | 5 |
| E.N. Central | 8 | 46 | 75 | 2,435 | 2,834 | — | 0 | 10 | 50 | 167 | — | 0 | 4 | 18 | 54 |
| Illinois | — | 11 | 23 | 579 | 731 | — | 0 | 9 | 27 | 86 | — | 0 | 4 | 13 | 31 |
| Indiana | 1 | 5 | 22 | 312 | 321 | — | 0 | 3 | 8 | 19 | — | 0 | 1 | 1 | 4 |
| Michigan | 2 | 10 | 33 | 602 | 722 | — | 0 | 1 | 1 | 24 | — | 0 | 0 | — | 12 |
| Ohio | 5 | 10 | 22 | 539 | 661 | — | 0 | 4 | 10 | 21 | — | 0 | 1 | 1 | 3 |
| Wisconsin | — | 7 | 15 | 403 | 399 | — | 0 | 2 | 4 | 17 | — | 0 | 2 | 3 | 4 |
| W.N. Central | 2 | 9 | 23 | 469 | 1,237 | — | 0 | 14 | 102 | 288 | — | 0 | 32 | 213 | 455 |
| Iowa | N | 0 | 0 | N | N | — | 0 | 3 | 5 | 24 | — | 0 | 2 | 10 | 20 |
| Kansas | — | 0 | 4 | — | 434 | — | 0 | 3 | 15 | 34 | — | 0 | 8 | 33 | 57 |
| Minnesota | — | 4 | 11 | 219 | 478 | — | 0 | 2 | 5 | 31 | — | 0 | 3 | 15 | 48 |
| Missouri | 2 | 3 | 16 | 196 | 230 | — | 0 | 2 | 12 | 24 | — | 0 | 1 | 1 | 5 |
| Nebraska | — | 0 | 3 | 12 | 16 | — | 0 | 9 | 41 | 54 | — | 0 | 19 | 99 | 172 |
| North Dakota | — | 0 | 3 | 19 | 36 | — | 0 | 3 | 12 | 64 | — | 0 | 3 | 10 | 61 |
| South Dakota | — | 0 | 3 | 23 | 43 | — | 0 | 3 | 12 | 57 | — | 0 | 11 | 45 | 92 |
| S. Atlantic | 12 | 22 | 46 | 1,172 | 1,404 | — | 0 | 6 | 31 | 36 | — | 0 | 3 | 10 | 18 |
| Delaware | — | 0 | 2 | 15 | 23 | — | 0 | 0 | — | 3 | — | 0 | 0 | — | — |
| District of Columbia | — | 0 | 0 | — | 10 | — | 0 | 1 | 1 | — | — | 0 | 1 | 2 | 1 |
| Florida | 12 | 10 | 28 | 563 | 659 | — | 0 | 2 | 10 | 5 | — | 0 | 1 | 4 | 2 |
| Georgia | — | 1 | 6 | 59 | 54 | — | 0 | 2 | 9 | 4 | — | 0 | 1 | 2 | 6 |
| Maryland | N | 0 | 0 | N | N | — | 0 | 2 | 5 | 11 | — | 0 | 0 | — | 5 |
| North Carolina | — | 0 | 0 | — | — | — | 0 | 0 | — | 3 | — | 0 | 0 | — | — |
| South Carolina | — | 2 | 11 | 142 | 168 | — | 0 | 1 | 2 | 3 | — | 0 | 0 | — | 4 |
| Virginia | — | 5 | 17 | 240 | 374 | — | 0 | 1 | 4 | 6 | — | 0 | 1 | 2 | — |
| West Virginia | — | 2 | 9 | 153 | 116 | — | 0 | 0 | — | 1 | — | 0 | 0 | — | — |
| E.S. Central | — | 2 | 8 | 105 | 165 | — | 0 | 5 | 37 | 48 | — | 0 | 3 | 24 | 33 |
| Alabama | — | 1 | 8 | 101 | 160 | — | 0 | 0 | — | 3 | — | 0 | 1 | 2 | 6 |
| Kentucky | N | 0 | 0 | N | N | — | 0 | 0 | — | 1 | — | 0 | 1 | 1 | 2 |
| Mississippi | — | 0 | 1 | 4 | 5 | — | 0 | 5 | 26 | 27 | — | 0 | 2 | 17 | 18 |
| Tennessee | N | 0 | 0 | N | N | — | 0 | 2 | 11 | 17 | — | 0 | 1 | 4 | 7 |
| W.S. Central | 11 | 35 | 107 | 1,781 | 2,185 | — | 0 | 33 | 292 | 223 | — | 0 | 29 | 182 | 121 |
| Arkansas | — | 3 | 24 | 219 | 249 | — | 0 | 1 | 5 | 16 | — | 0 | 1 | 2 | 2 |
| Louisiana | — | 0 | 4 | 32 | 62 | — | 0 | 7 | 47 | 34 | — | 0 | 11 | 54 | 20 |
| Oklahoma | N | 0 | 0 | N | N | — | 0 | 2 | 8 | 60 | — | 0 | 3 | 9 | 29 |
| Texas | 11 | 31 | 98 | 1,530 | 1,874 | — | 0 | 26 | 232 | 113 | — | 0 | 18 | 117 | 70 |
| Mountain | 5 | 16 | 53 | 925 | 1,093 | — | 0 | 21 | 147 | 216 | — | 0 | 23 | 114 | 343 |
| Arizona | — | 4 | 22 | 297 | 354 | — | 0 | 8 | 72 | 50 | — | 0 | 4 | 19 | 12 |
| Colorado | 5 | 3 | 27 | 307 | 353 | — | 0 | 11 | 45 | 90 | — | 0 | 17 | 69 | 232 |
| Idaho | N | 0 | 0 | N | N | — | 0 | 1 | 5 | 14 | — | 0 | 4 | 13 | 26 |
| Montana | — | 1 | 5 | 70 | 84 | — | 0 | 2 | 3 | 10 | — | 0 | 1 | 2 | 28 |
| Nevada | N | 0 | 0 | N | N | — | 0 | 1 | 3 | 8 | — | 0 | 0 | — | 3 |
| New Mexico | — | 1 | 5 | 51 | 66 | — | 0 | 5 | 19 | 24 | — | 0 | 4 | 5 | 14 |
| Utah | — | 4 | 9 | 195 | 227 | — | 0 | 0 | — | 4 | — | 0 | 1 | 1 | 3 |
| Wyoming | — | 0 | 1 | 5 | 9 | — | 0 | 0 | — | 16 | — | 0 | 2 | 5 | 25 |
| Pacific | — | 3 | 9 | 145 | 121 | — | 0 | 57 | 538 | 244 | — | 0 | 28 | 257 | 152 |
| Alaska | — | 0 | 8 | 70 | 61 | — | 0 | 0 | — | — | — | 0 | 0 | — | — |
| California | — | 0 | 3 | 29 | 30 | — | 0 | 57 | 531 | 237 | — | 0 | 27 | 251 | 142 |
| Hawaii | — | 1 | 4 | 46 | 30 | — | 0 | 0 | — | — | — | 0 | 0 | — | — |
| Oregon | N | 0 | 0 | N | N | — | 0 | 0 | — | 7 | — | 0 | 1 | 1 | 9 |
| Washington | N | 0 | 0 | N | N | — | 0 | 1 | 7 | — | — | 0 | 2 | 5 | 1 |
| Territories | | | | | | | | | | | | | | | |
| American Samoa | N | — | — | N | N | — | — | — | — | — | — | — | — | — | — |
| C.N.M.I. | — | — | — | — | — | — | — | — | — | — | — | — | — | — | — |
| Guam | — | 0 | 0 | — | 57 | — | 0 | 0 | — | — | — | 0 | 0 | — | — |
| Puerto Rico | — | 3 | 12 | 191 | 305 | — | 0 | 0 | — | — | — | 0 | 0 | — | — |
| U.S. Virgin Islands | — | 0 | 0 | — | — | — | 0 | 0 | — | — | — | 0 | 0 | — | — |

C.N.M.I.: Commonwealth of Northern Mariana Islands.

U: Unavailable. —: No reported cases. N: Not reportable. NN: Not Nationally Notifiable. Cum: Cumulative year-to-date counts. Med: Median. Max: Maximum.

* Case counts for reporting year 2014 are provisional and subject to change. For further information on interpretation of these data, see <http://www.cdc.gov/nndss/document/ProvisionalNationalNotifiableDiseasesSurveillanceData20100927.pdf>. Data for TB are displayed in Table IV, which appears quarterly.

† Updated weekly from reports to the Division of Vector-Borne Infectious Diseases, National Center for Zoonotic, Vector-Borne, and Enteric Diseases (ArboNET Surveillance). Data for California serogroup, eastern equine, Powassan, St. Louis, and western equine diseases are available in Table I.

‡ Not reportable in all states. Data from states where the condition is not reportable are excluded from this table, except starting in 2007 for the domestic arboviral diseases and influenza-associated pediatric mortality, and in 2003 for SARS-CoV. Reporting exceptions are available at http://www.cdc.gov/nndss/document/SRCA_FINAL_REPORT_2006-2012_final.xlsx.

Morbidity and Mortality Weekly Report

TABLE III. Deaths in 122 U.S. cities,* week ending December 27, 2014 (52nd week) (Export data)

| Reporting area | All causes, by age (years) | | | | | | P&I† | Reporting area (Continued) | All causes, by age (years) | | | | | | P&I† |
|-----------------------------|----------------------------|-------|-------|-------|------|----|------|-------------------------------|----------------------------|--------------|--------------|------------|------------|------------|------------|
| | All Ages | ≥65 | 45-64 | 25-44 | 1-24 | <1 | | | All Ages | ≥65 | 45-64 | 25-44 | 1-24 | <1 | |
| New England | 395 | 264 | 91 | 27 | 10 | 3 | 26 | S. Atlantic | 918 | 595 | 224 | 54 | 20 | 24 | 52 |
| Boston, MA | 107 | 67 | 24 | 9 | 6 | 1 | 7 | Atlanta, GA | 110 | 63 | 35 | 6 | 3 | 3 | 5 |
| Bridgeport, CT | 25 | 17 | 5 | 2 | — | 1 | 1 | Baltimore, MD | 172 | 107 | 41 | 12 | 3 | 9 | 5 |
| Cambridge, MA | 8 | 7 | — | 1 | — | — | 1 | Charlotte, NC | 91 | 69 | 15 | 5 | 1 | 1 | 10 |
| Fall River, MA | 17 | 10 | 6 | 1 | — | — | — | Jacksonville, FL | 119 | 75 | 28 | 12 | 2 | 2 | 6 |
| Hartford, CT | 27 | 17 | 9 | — | 1 | — | 2 | Miami, FL | 53 | 39 | 10 | 3 | 1 | — | 4 |
| Lowell, MA | 19 | 13 | 5 | 1 | — | — | 2 | Norfolk, VA | 32 | 17 | 12 | 1 | 1 | 1 | 2 |
| Lynn, MA | 7 | 3 | 3 | — | 1 | — | — | Richmond, VA | 36 | 22 | 9 | 1 | 1 | 2 | 1 |
| New Bedford, MA | 9 | 5 | 4 | — | — | — | 1 | Savannah, GA | 38 | 25 | 11 | 1 | 1 | — | 2 |
| New Haven, CT | U | U | U | U | U | U | U | St. Petersburg, FL | 46 | 33 | 8 | 2 | 1 | 2 | 4 |
| Providence, RI | 62 | 43 | 11 | 6 | 1 | 1 | — | Tampa, FL | 80 | 53 | 20 | 2 | 2 | 3 | 3 |
| Somerville, MA | 2 | 2 | — | — | — | — | — | Washington, D.C. | 134 | 88 | 33 | 9 | 3 | 1 | 9 |
| Springfield, MA | 40 | 30 | 8 | 2 | — | — | — | Wilmington, DE | 7 | 4 | 2 | — | 1 | — | 1 |
| Waterbury, CT | 28 | 22 | 4 | 1 | 1 | — | 1 | E.S. Central | 716 | 484 | 177 | 27 | 18 | 10 | 60 |
| Worcester, MA | 44 | 28 | 12 | 4 | — | — | 11 | Birmingham, AL | 153 | 96 | 39 | 9 | 5 | 4 | 8 |
| Mid. Atlantic | 1,783 | 1,309 | 345 | 90 | 28 | 11 | 93 | Chattanooga, TN | 58 | 49 | 8 | 1 | — | — | 5 |
| Albany, NY | 50 | 35 | 10 | 3 | 1 | 1 | 3 | Knoxville, TN | 94 | 67 | 24 | 2 | 1 | — | 9 |
| Allentown, PA | 47 | 35 | 9 | 3 | — | — | 5 | Lexington, KY | 52 | 38 | 11 | 3 | — | — | 1 |
| Buffalo, NY | 94 | 70 | 18 | 2 | 4 | — | 5 | Memphis, TN | 140 | 82 | 46 | 6 | 4 | 2 | 19 |
| Camden, NJ | 13 | 7 | 5 | 1 | — | — | 1 | Mobile, AL | 48 | 34 | 9 | 1 | 3 | 1 | 5 |
| Elizabeth, NJ | 11 | 8 | 3 | — | — | — | 1 | Montgomery, AL | 52 | 33 | 13 | 3 | 3 | — | 5 |
| Erie, PA | 47 | 40 | 4 | 2 | 1 | — | 1 | Nashville, TN | 119 | 85 | 27 | 2 | 2 | 3 | 8 |
| Jersey City, NJ | U | U | U | U | U | U | U | W.S. Central | 849 | 547 | 204 | 51 | 17 | 30 | 53 |
| New York City, NY | 1,075 | 779 | 215 | 57 | 18 | 6 | 45 | Austin, TX | 73 | 48 | 17 | 4 | 2 | 2 | 7 |
| Newark, NJ | 39 | 23 | 9 | 6 | 1 | — | 1 | Baton Rouge, LA | 42 | 31 | 9 | 1 | — | 1 | 4 |
| Paterson, NJ | 11 | 8 | 2 | — | 1 | — | — | Corpus Christi, TX | 56 | 37 | 14 | 3 | 1 | 1 | 4 |
| Philadelphia, PA | U | U | U | U | U | U | U | Dallas, TX | 164 | 103 | 37 | 13 | 4 | 7 | 13 |
| Pittsburgh, PA [§] | 14 | 12 | 2 | — | — | — | 1 | El Paso, TX | 60 | 48 | 9 | 2 | — | 1 | 3 |
| Reading, PA | 37 | 30 | 6 | — | — | 1 | 5 | Fort Worth, TX | U | U | U | U | U | U | U |
| Rochester, NY | 168 | 126 | 31 | 7 | 2 | 2 | 19 | Houston, TX | 228 | 142 | 62 | 13 | 6 | 5 | 7 |
| Schenectady, NY | 26 | 22 | 3 | 1 | — | — | 1 | Little Rock, AR | 60 | 25 | 18 | 6 | 1 | 10 | 5 |
| Scranton, PA | 20 | 15 | 2 | 2 | — | 1 | 3 | New Orleans, LA | 36 | 23 | 8 | 3 | 2 | — | — |
| Syracuse, NY | 84 | 65 | 15 | 4 | — | — | 1 | San Antonio, TX | U | U | U | U | U | U | U |
| Trenton, NJ | 13 | 8 | 4 | 1 | — | — | — | Shreveport, LA | 48 | 36 | 11 | — | 1 | — | 3 |
| Utica, NY | 15 | 10 | 4 | 1 | — | — | — | Tulsa, OK | 82 | 54 | 19 | 6 | — | 3 | 7 |
| Yonkers, NY | 19 | 16 | 3 | — | — | — | 1 | Mountain | 1,061 | 731 | 218 | 63 | 18 | 9 | 63 |
| E.N. Central | 1,307 | 941 | 257 | 64 | 20 | 25 | 105 | Albuquerque, NM | 98 | 70 | 20 | 3 | 4 | 1 | 7 |
| Akron, OH | 42 | 26 | 10 | 3 | 3 | — | 5 | Boise, ID | 43 | 22 | 1 | — | — | — | 4 |
| Canton, OH | 23 | 16 | 6 | — | — | 1 | 2 | Colorado Springs, CO | 68 | 51 | 13 | 4 | — | — | 3 |
| Chicago, IL | U | U | U | U | U | U | U | Denver, CO | 94 | 69 | 18 | 5 | — | 2 | 4 |
| Cincinnati, OH | 68 | 48 | 16 | 1 | — | 3 | 3 | Las Vegas, NV | 287 | 200 | 68 | 13 | 5 | 1 | 19 |
| Cleveland, OH | 223 | 167 | 41 | 8 | 2 | 5 | 24 | Ogden, UT | 28 | 24 | 4 | — | — | — | 4 |
| Columbus, OH | 170 | 126 | 34 | 5 | 3 | 2 | 18 | Phoenix, AZ | 142 | 80 | 41 | 13 | 4 | 2 | 5 |
| Dayton, OH | 112 | 79 | 23 | 8 | 2 | — | 3 | Pueblo, CO | 29 | 17 | 9 | 3 | — | — | 3 |
| Detroit, MI | U | U | U | U | U | U | U | Salt Lake City, UT | 123 | 80 | 22 | 15 | 4 | 2 | 6 |
| Evansville, IN | 42 | 33 | 8 | 1 | — | — | 7 | Tucson, AZ | 149 | 118 | 22 | 7 | 1 | 1 | 8 |
| Fort Wayne, IN | 60 | 44 | 9 | 4 | 2 | 1 | 2 | Pacific | 1,388 | 966 | 292 | 81 | 24 | 24 | 114 |
| Gary, IN | 9 | 5 | 3 | — | — | 1 | — | Berkeley, CA | 3 | 2 | — | 1 | — | — | — |
| Grand Rapids, MI | 49 | 34 | 9 | 4 | — | 2 | 3 | Fresno, CA | 91 | 67 | 16 | 5 | 1 | 2 | 11 |
| Indianapolis, IN | 160 | 116 | 25 | 11 | 3 | 5 | 10 | Glendale, CA | 20 | 17 | 2 | 1 | — | — | 4 |
| Lansing, MI | 23 | 16 | 6 | 1 | — | — | 1 | Honolulu, HI | 58 | 44 | 10 | 3 | — | 1 | 9 |
| Milwaukee, WI | 69 | 42 | 19 | 6 | 1 | 1 | 7 | Long Beach, CA | 39 | 29 | 5 | 4 | — | 1 | 4 |
| Peoria, IL | 64 | 45 | 15 | 3 | — | 1 | 5 | Los Angeles, CA | 225 | 141 | 52 | 17 | 8 | 7 | 24 |
| Rockford, IL | 51 | 40 | 6 | 3 | 2 | — | 4 | Pasadena, CA | 17 | 14 | 2 | — | — | 1 | 2 |
| South Bend, IN | 44 | 34 | 6 | — | 1 | 3 | 5 | Portland, OR | 135 | 96 | 25 | 9 | 2 | 3 | 5 |
| Toledo, OH | 49 | 34 | 11 | 4 | — | — | 3 | Sacramento, CA | 140 | 105 | 21 | 11 | 2 | 1 | 13 |
| Youngstown, OH | 49 | 36 | 10 | 2 | 1 | — | 3 | San Diego, CA | 131 | 98 | 23 | 7 | 1 | 2 | 7 |
| W.N. Central | 476 | 321 | 112 | 24 | 11 | 7 | 35 | San Francisco, CA | 70 | 49 | 17 | 3 | — | 1 | 4 |
| Des Moines, IA | — | — | — | — | — | — | — | San Jose, CA | 147 | 96 | 39 | 8 | 4 | — | 8 |
| Duluth, MN | 21 | 16 | 4 | 1 | — | — | 2 | Santa Cruz, CA | 23 | 15 | 7 | 1 | — | — | 1 |
| Kansas City, KS | 17 | 14 | 1 | 1 | 1 | — | 3 | Seattle, WA | 133 | 94 | 28 | 6 | 2 | 2 | 8 |
| Kansas City, MO | 64 | 38 | 18 | 4 | 2 | 2 | 1 | Spokane, WA | 26 | 18 | 5 | — | 1 | 2 | 3 |
| Lincoln, NE | 48 | 39 | 6 | 3 | — | — | 3 | Tacoma, WA | 130 | 81 | 40 | 5 | 3 | 1 | 11 |
| Minneapolis, MN | 53 | 35 | 13 | 2 | 1 | 2 | 8 | Total¶ | 8,893 | 6,158 | 1,920 | 481 | 166 | 143 | 601 |
| Omaha, NE | 82 | 59 | 17 | 4 | 2 | — | 8 | | | | | | | | |
| St. Louis, MO | 87 | 46 | 30 | 5 | 4 | 1 | 5 | | | | | | | | |
| St. Paul, MN | 33 | 22 | 10 | — | 1 | — | 2 | | | | | | | | |
| Wichita, KS | 71 | 52 | 13 | 4 | — | 2 | 3 | | | | | | | | |

U: Unavailable. —: No reported cases.

* Mortality data in this table are voluntarily reported from 122 cities in the United States, most of which have populations of >100,000. A death is reported by the place of its occurrence and by the week that the death certificate was filed. Fetal deaths are not included.

† Pneumonia and influenza.

§ Because of changes in reporting methods in this Pennsylvania city, these numbers are partial counts for the current week. Complete counts will be available in 4 to 6 weeks.

¶ Total includes unknown ages.