

# BIOTHREAT RULE-OUT OR REFER: VIRTUAL KNOWLEDGE EXERCISE FIVE

AN ONLINE LEARNING ACTIVITY  
AVAILABLE ON [WWW.CDC.TRAIN.ORG](http://WWW.CDC.TRAIN.ORG)

Sponsored by the  
Division of Laboratory Systems,  
Center for Surveillance, Epidemiology and Laboratory Services,  
Centers for Disease Control and Prevention



## DESCRIPTION

This virtual exercise provides an opportunity for microbiologists to participate in a series of three virtual case studies using the American Society for Microbiology (ASM) sentinel laboratory protocols to detect potential biothreat agents, while in a safe environment.

Each exercise begins with a virtual case description and specimen. Participants select the media and tests to use. Each selection will provide images and data to interpret. Participants will be required to log their interpretations as they work through the ASM protocols. Each exercise is complete once a decision is made to either rule-out the possibility of a biothreat agent within their laboratory, or to refer the specimen to a Laboratory Response Network (LRN) reference laboratory.

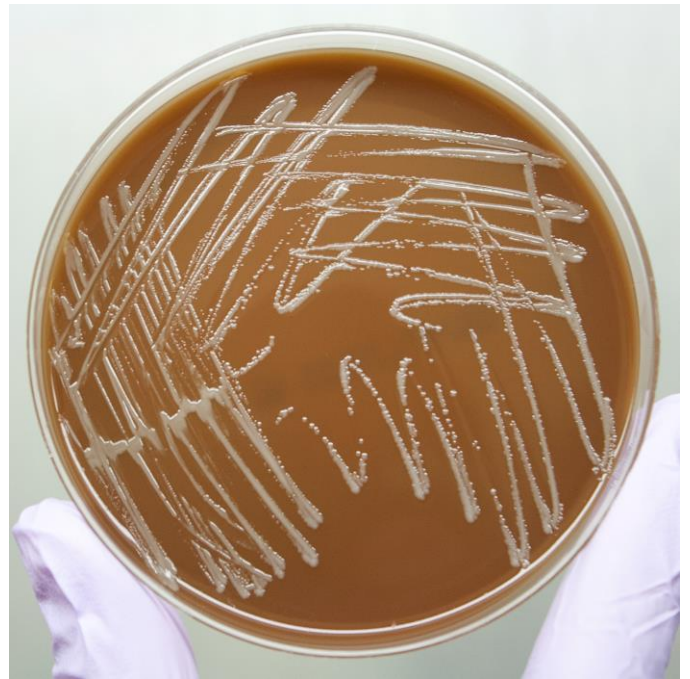
Supervisors may wish to ask their staff to participate in the virtual exercise and review the resulting worksheets, in order to document laboratory personnel competency within the area of emergency response.

## AUDIENCE

This online training activity is designed for laboratory professionals working in LRN Sentinel Laboratories.

## FREE REGISTRATION

- Locate the course online at [www.cdc.gov/labtraining](http://www.cdc.gov/labtraining)
- Follow the link to register for the course in TRAIN
- If you have difficulty with the online registration process, please email [labtraining@cdc.gov](mailto:labtraining@cdc.gov)



## CONTINUING EDUCATION

Continuing education credits are not available for this training activity. You may download a certificate from the CDC upon completion.

## SPECIAL NEEDS

Course content is closed captioned, where applicable, and optimized for a screen reader.

## ACKNOWLEDGMENTS

This course was developed in collaboration with the Association of Public Health Laboratories (APHL) and the State Hygienic Laboratory at the University of Iowa.

**For a complete list of courses, visit [www.cdc.gov/labtraining](http://www.cdc.gov/labtraining).**